



Manuals.plus /

- › **Allesin** /
- › Allesin Motorized Blinds User Manual (Model 45"W x 72"H)

Allesin 45"W x 72"H

Allesin Motorized Blinds User Manual

Model: 45"W x 72"H Milky White

1. INTRODUCTION

This manual provides detailed instructions for the installation, operation, and maintenance of your Allesin Motorized Blinds. These blinds are designed for convenience and efficiency, featuring remote control, smart home integration, and a rechargeable cordless design. They are suitable for various room types, offering blackout capabilities and enhanced safety.



Image 1.1: Allesin Motorized Blinds, Milky White, installed in a window.

2. SAFETY INFORMATION

Your Allesin Motorized Blinds are designed with safety in mind, particularly for households with children and pets. The cordless design eliminates the risks associated with traditional blind cords.

- Keep remote controls out of reach of children to prevent unintended operation.
- Ensure the blinds operate freely without obstruction from furniture or other objects.
- Do not attempt to manually force the blinds up or down when the motor is engaged.
- Only use the provided charging cable and power accessories.

3. PACKAGE CONTENTS

Verify that all components are present in your package before beginning installation:

- Motorized Shade (x1)
- Brackets (x2)
- Screws (x6)
- Internal Hexagonal Wrench (x1)
- Rubber Plug (x1)
- Block Extension (1/8" & 1/4") (x1)
- Magnetic Lithium Battery (x1)
- One-channel Remote Control (x1)
- USB Charging Extension Cable (x1)



Image 3.1: Visual representation of all included parts.

4. INSTALLATION AND SETUP

4.1 Measuring for a Perfect Fit

Accurate measurements are crucial for proper installation. Determine whether you will use an Inside Mount or Outside Mount installation method.



Image 4.1: Guide for measuring window dimensions for inside and outside mounts.

Inside Mount:

- **Window Depth:** Minimum depth required is 2 5/8 inches.
- **Window Width:** Measure the width at the top, middle, and bottom of the window frame. Use the smallest measurement as your window width. Your order width will be Window width - 1/4 inch.
- **Window Height:** Measure the height from top to bottom. Your order height will be the Window height.

Outside Mount:

- **Measuring Tip:** Outside mount covers your entire window opening and frame. Add 4 to 6 inches to your window width and height measurements for optimal coverage.

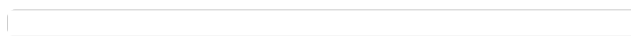


Image 4.2: Detailed guide for selecting the correct order size based on window dimensions.



Image 4.3: Partial table of recommended order widths.

4.2 Mounting Options

Your Allesin Motorized Blinds offer two installation methods: Drill Mounting for a secure, permanent fit, and No-Drill Mounting for quick, damage-free installation.



Image 4.4: Illustration of drill and no-drill mounting methods.

Drill Mounting (Secure & Permanent):

- Requires brackets and screws.
- Ideal for solid walls or window frame installations.

No-Drill Mounting (No Damage & Easy Off):

- Utilizes a pressure-fit tension bar.
- Best suited for smooth surfaces like tile or metal.
- Can be installed in approximately 27 seconds.

5. OPERATION

Your Allesin Motorized Blinds can be controlled through multiple convenient methods:



Image 5.1: Overview of control options including remote, app, and voice commands.

5.1 Remote Control

Use the included one-channel remote control to operate your blinds. A 15-channel remote control is available for controlling up to 32 blinds simultaneously (sold separately).



Image 5.2: The 15-channel remote control for managing multiple blinds.

5.2 App Control

Pair your blinds with a smart hub (sold separately) and use the Tuya app or Smart Life app for advanced control features.

- **Group Control:** Operate multiple blinds simultaneously.
- **Opening Adjustment:** Precisely set the open/close position.
- **Angle Variation:** Adjust the slat angle for light control.
- **Scheduling:** Set automated open and close times for daily convenience.



Image 5.3: Controlling blinds via a smartphone application.

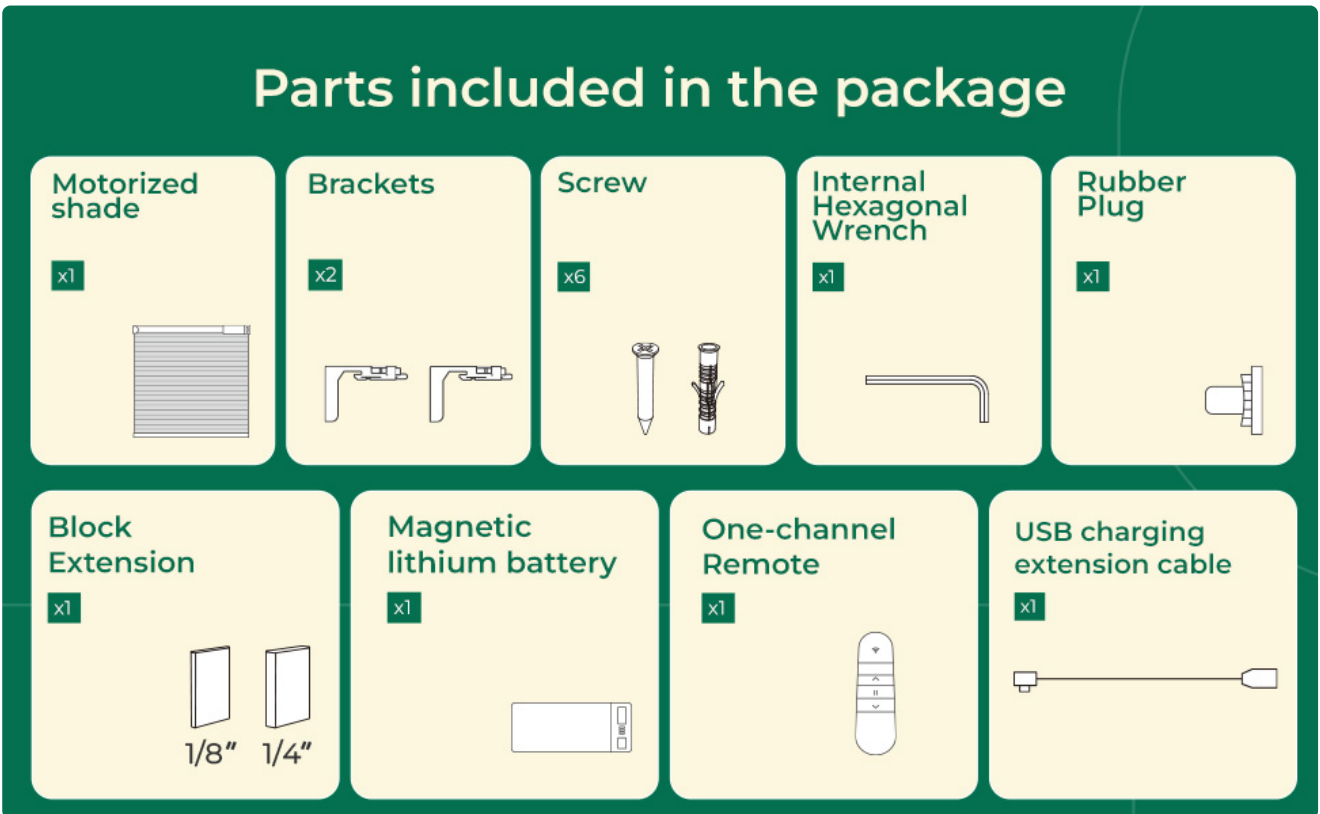


Image 5.4: Setting schedules for automatic blind operation.

5.3 Voice Control

Integrate your blinds with smart home assistants like Amazon Alexa or Google Assistant via a smart hub for hands-free voice control.



Image 5.5: Voice control integration with smart home devices.

6. CHARGING

The motorized blinds are equipped with a high-quality rechargeable motor and an external power box. The blinds can operate for 4 to 6 months on a full charge.



Image 6.1: Power supply options including solar charging and USB charging.

- **USB Charging:** Use the provided USB charging extension cable to recharge the detachable battery pack.
- **Solar Charging:** A solar charging panel is supported for continuous power (sold separately).

7. MAINTENANCE

Regular maintenance ensures the longevity and optimal performance of your Allesin Motorized Blinds.

- **Cleaning:** Gently wipe the slats with a soft, damp cloth to remove dust and grease. Avoid harsh chemicals or abrasive cleaners.
- **Battery Care:** Recharge the battery when the motor performance decreases. Avoid completely draining the battery frequently.
- **Inspection:** Periodically check mounting brackets and hardware for tightness.

8. TROUBLESHOOTING

If you encounter issues with your Allesin Motorized Blinds, refer to the following common problems and solutions:

Problem	Possible Cause	Solution
Blinds do not respond to remote.	Low battery in remote or blinds; remote not paired; obstruction.	Check/replace remote battery. Recharge blind battery. Re-pair remote. Clear obstructions.
Blinds move slowly or stop mid-operation.	Low battery in blinds.	Recharge the blind battery.
Blinds make unusual noise.	Obstruction; motor issue.	Check for obstructions. If noise persists, contact customer support.
App control not working.	Smart hub not connected; app not configured correctly.	Ensure smart hub is powered and connected to Wi-Fi. Reconfigure app settings.

9. SPECIFICATIONS

Feature	Detail
Product Dimensions	45"L x 72"W
Brand	Allesin
Color	Milky White
Room Type Compatibility	Bathroom, Bedroom, Kitchen, Living Room, Office
Special Features	Blackout, Cordless, Window Treatments
Size	45"W x 72"H
Manufacturer	Allesin
ASIN	B0FJDCGCSS

10. SUPPORT

For any questions, custom service requests, or assistance with your Allesin Motorized Blinds, please contact our professional support team. We are committed to providing a better shopping experience.

You can typically find contact information on the product packaging or the Allesin official website.