

QUW ABC023

QUW 71-inch Tall Arched Kitchen Pantry Cabinet

Model: ABC023

INTRODUCTION

Thank you for choosing the QUW 71-inch Tall Arched Kitchen Pantry Cabinet. This manual provides essential information for the safe assembly, operation, and maintenance of your new furniture. Please read these instructions carefully before beginning assembly and retain them for future reference.

This cabinet is designed to provide versatile storage solutions for various rooms, including kitchens, dining rooms, living rooms, entryways, and hallways. Its features include an arched design, tempered glass doors, adjustable shelves, and an anti-tipping mechanism for enhanced safety.

SAFETY INFORMATION

Please observe the following safety precautions during assembly and use:

- **Adult Assembly Required:** This product requires assembly by adults. Keep children and pets away from the assembly area.
- **Use Proper Tools:** Ensure you have the correct tools for assembly as specified in the instructions.
- **Anti-Tipping Device:** It is crucial to install the included anti-tipping device to prevent the cabinet from falling over. This is especially important in households with children or pets. Failure to install this device can result in serious injury.
- **Weight Limits:** Do not exceed the weight limits for shelves. Overloading can cause structural damage or collapse.
- **Stable Surface:** Place the cabinet on a flat, stable, and level surface to prevent wobbling or tipping.
- **Handle with Care:** Glass components are fragile. Handle them with care to avoid breakage and injury.



Image Description: This image illustrates the critical importance of the anti-tipping design. On the left, a cabinet is shown leaning precariously forward, marked with a red 'X', indicating an unsafe condition. On the right, the same cabinet is shown securely anchored to the wall with an anti-tipping strap, marked with a green checkmark, demonstrating a safe setup. A small child is depicted reaching towards the securely installed cabinet, emphasizing the safety benefit for families.

PACKAGE CONTENTS

Before assembly, verify that all components and hardware are present. If any parts are missing or damaged, please contact customer support.

- Cabinet Panels (various sizes)
- Glass Doors (2)
- Adjustable Shelves (multiple)
- Metal Handles (4)
- Hinges and Fasteners
- Anti-Tipping Kit
- Assembly Hardware (screws, dowels, cam locks, etc.)
- Instruction Manual

ASSEMBLY INSTRUCTIONS (SETUP)

Follow these steps carefully for proper assembly. It is recommended to assemble the cabinet on a soft, clean surface to prevent scratches.

1. **Unpack and Identify Parts:** Lay out all panels and hardware. Refer to the parts list in your manual to identify each component.
2. **Assemble Base and Side Panels:** Attach the base and side panels according to the diagrams in your specific manual. Ensure all connections are secure.
3. **Install Back Panel:** Secure the back panel to the main structure. This adds stability to the cabinet.
4. **Attach Hinges to Doors:** Fasten the hinges to the glass doors. Be careful when handling glass.
5. **Mount Doors:** Attach the doors to the cabinet frame using the pre-drilled holes. Adjust hinges as needed for proper alignment (refer to Troubleshooting section for detailed hinge adjustment).
6. **Install Handles:** Secure the metal handles to the doors.

7. **Insert Adjustable Shelves:** Place the shelf pins into the desired holes and then rest the shelves on top.
8. **Install Anti-Tipping Device:** Securely attach the anti-tipping device to the top rear of the cabinet and then to a wall stud. This step is mandatory for safety.



Image Description: This diagram provides detailed measurements of the QUW Arched Kitchen Pantry Cabinet. It shows the overall height of 72 inches, width of 31 inches, and depth of 16 inches. Internal shelf dimensions are also indicated, including the height of various compartments (e.g., 13.7 inches, 8.8 inches, 8.7 inches) and the internal width of 29.8 inches. A weight capacity of 45 lbs per shelf is also noted.



Image Description: An interior view of the QUW Arched Kitchen Pantry Cabinet with its doors open, showcasing its ample storage capacity and adjustable shelves. The shelves are filled with various kitchen and pantry items, including plates, bowls, jars, and utensils, demonstrating how different items can be organized. Arrows and measurements indicate the 2.5-inch increments for shelf adjustment.

OPERATING INSTRUCTIONS

Using your QUW Pantry Cabinet is straightforward:

- **Opening/Closing Doors:** Use the metal handles to gently open and close the cabinet doors. Avoid slamming the doors to prevent damage to hinges and glass.
- **Adjusting Shelves:** To adjust a shelf, remove all items from it. Carefully lift the shelf and remove the four shelf pins. Reinsert the pins into the desired holes at the new height, ensuring they are level, then place the shelf back on the pins.
- **Loading Contents:** Distribute weight evenly across shelves. Place heavier items on lower shelves to maintain stability. Do not exceed the maximum weight capacity of 45 lbs per shelf.

MAINTENANCE

Proper care will extend the life and appearance of your cabinet:

- **Cleaning:** Wipe surfaces with a soft, damp cloth. Avoid abrasive cleaners or harsh chemicals, which can damage the finish. For glass, use a standard glass cleaner.
- **Dusting:** Regularly dust the cabinet with a dry, soft cloth.
- **Hardware Check:** Periodically check all screws and fasteners to ensure they are tight. Tighten if necessary.
- **Avoid Direct Sunlight:** Prolonged exposure to direct sunlight can cause fading or discoloration of the finish.
- **Moisture Protection:** Protect the cabinet from excessive moisture and humidity. Wipe up spills immediately.

TROUBLESHOOTING

Here are solutions to common issues you might encounter:

Door Alignment Issues

If the cabinet doors do not align flat or have gaps, hinge adjustments are required. Refer to the diagrams below for guidance:

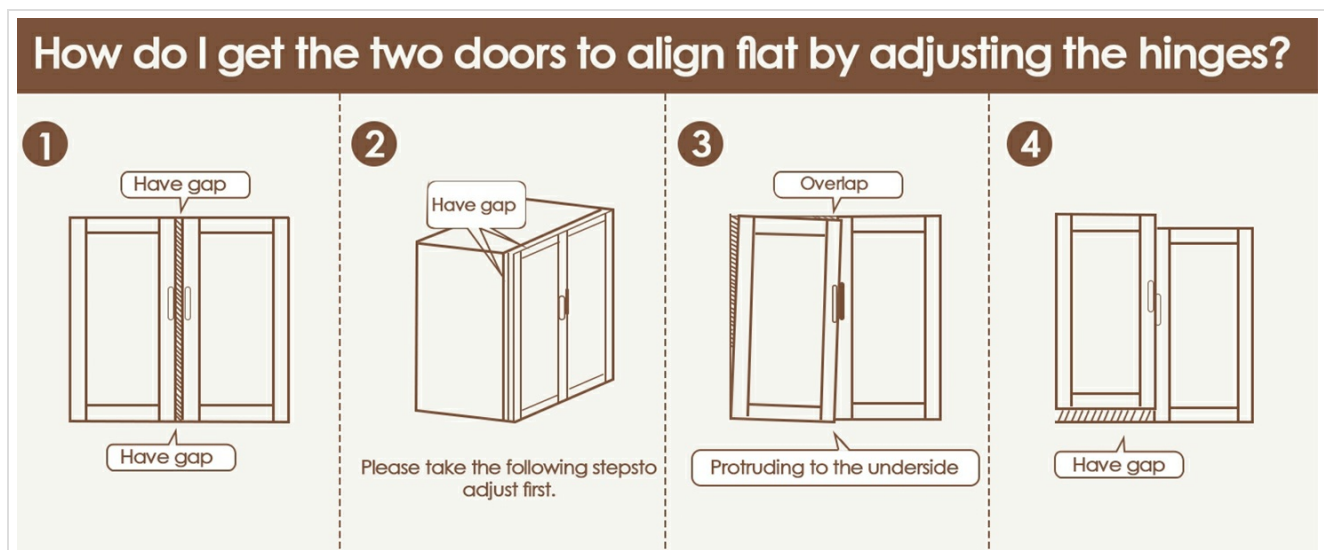


Image Description: This diagram shows four common door alignment problems: 1) a gap between the doors, 2) a gap at the top corner of the doors, 3) doors overlapping, and 4) a door protruding at the bottom. These visuals help identify the specific alignment issue before proceeding with adjustments.

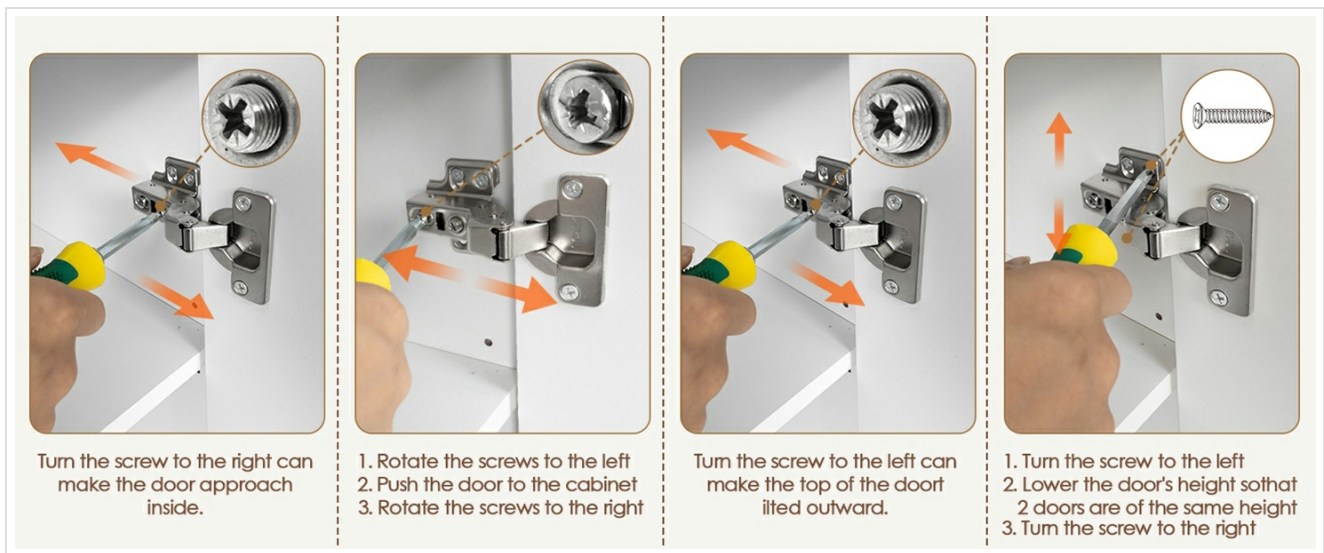


Image Description: This image provides a step-by-step visual guide on how to adjust cabinet door hinges using a screwdriver. It shows four distinct adjustments: 1) turning a screw to the right to move the door inward, 2) rotating screws to push the door into the cabinet and then rotating them to the right, 3) turning a screw to the left to tilt the top of the door outward, and 4) turning a screw to the left to lower the door's height, followed by turning it to the right to secure the adjustment. Each step is accompanied by an arrow indicating the direction of adjustment.

- **Horizontal Adjustment (Side-to-Side):** Locate the screw on the hinge that controls the door's horizontal position. Turning it right typically moves the door inward, while turning it left moves it outward. Adjust until the gap between doors is even.
- **Depth Adjustment (In-and-Out):** Some hinges have a screw that allows the door to be moved closer to or further from the cabinet frame. Adjust this if the door is not flush with the cabinet.
- **Vertical Adjustment (Up-and-Down):** There is usually a screw that allows the entire door to be raised or lowered. Adjust this to ensure the top and bottom edges of the doors align.

Wobbling Cabinet

If the cabinet wobbles, ensure it is placed on a level surface. Check and tighten all assembly screws. If the floor is uneven, use shims under the legs to stabilize it.

SPECIFICATIONS

Brand	QUW
Model Name	ABC023
Color	Grey
Product Dimensions	16.2"D x 31.1"W x 72"H
Item Weight	116.8 Pounds
Material	Wood Composite (Cabinet), Metal (Handles)
Special Features	Adjustable Shelf, Anti-Tipping
Mounting Type	Floor Mount (with wall anchor)
Door Style	Glass Front
Assembly Required	Yes

WARRANTY INFORMATION

Specific warranty details for the QUW 71-inch Tall Arched Kitchen Pantry Cabinet are not provided within this instruction manual. Please refer to the product packaging, the manufacturer's official website, or your purchase receipt for comprehensive warranty terms and conditions.

CUSTOMER SUPPORT

If you have any questions, require assistance with assembly, or need to report missing or damaged parts, please contact QUW customer support through the retailer where the product was purchased or visit the official QUW website for contact information.

© 2025 QUW. All rights reserved.