

Manuals.plus /

- › AXNEN /
- › AXNEN GT8 Mini Drone with HD Camera User Manual

AXNEN GT8

AXNEN GT8 Mini Drone with HD Camera User Manual

Model: GT8

[Introduction](#) [Safety Information](#) [Package Contents](#) [Setup](#) [Operating](#)
[Instructions](#) [Maintenance](#) [Troubleshooting](#) [Specifications](#) [Warranty & Support](#)

1. INTRODUCTION

This manual provides detailed instructions for the safe operation and maintenance of your AXNEN GT8 Mini Drone. The GT8 is a foldable quadcopter equipped with a 4K HD camera, brushless motors, and a remote control with a built-in 4.3-inch LCD screen for real-time image transmission. It features various flight modes and intelligent functions designed for both beginners and experienced users.



Image: The AXNEN GT8 Mini Drone with its remote control, featuring an integrated LCD screen for direct viewing of flight footage.

Please read this manual thoroughly before operating the drone to ensure proper usage and to prevent damage or injury.

2. SAFETY INFORMATION

- **Flight Environment:** Operate the drone in open, clear areas, away from people, buildings, trees, and power lines. Avoid flying in strong winds or adverse weather conditions.

- **Battery Safety:** Use only the provided batteries and charger. Do not overcharge or puncture batteries. Discontinue use if batteries show signs of damage or swelling.
- **Propeller Safety:** Keep hands, face, and loose clothing away from rotating propellers. Ensure propellers are correctly installed and undamaged before each flight.
- **Operator Responsibility:** The operator is responsible for safe operation and compliance with local regulations. This drone weighs less than 249 grams and typically does not require FAA registration in the United States, but always check current local regulations.
- **Visual Line of Sight:** Always maintain visual line of sight with the drone during flight.
- **Water and Moisture:** Do not expose the drone or remote control to water or moisture.

3. PACKAGE CONTENTS

Verify that all items listed below are present in your package:



Image: All components included in the AXNEN GT8 Mini Drone package, laid out for inspection.

- AXNEN GT8 Mini Drone x 1
- Remote Control with 4.3" HD LCD Screen x 1

- Rechargeable Drone Batteries (1300mAh) x 2
- Spare Propellers x 8
- USB Charging Cable x 1
- Screwdriver x 1
- Memory Card (8GB) x 1
- Memory Card Reader x 1
- Carrying Case x 1
- User Manual x 1

4. SETUP

4.1. Charging Batteries

Ensure both the drone batteries and the remote control are fully charged before first use. Use the provided USB charging cable.

- Connect the drone battery to the USB charging cable.
- Connect the USB cable to a suitable USB power adapter (not included).
- Charging indicators will show the charging status. A full charge typically takes approximately 2 hours for the remote control and 1.5-2 hours per drone battery.

**Large battery capacity
Long-lasting battery life**

2 Batteries

≈ 30 Mins



**Brushless and
powerful power**



Noise reduction -99%

Wind resistant stability enhancement+99%

Image: Illustration of the drone's high-capacity batteries and brushless motors, highlighting power and efficiency.

4.2. Propeller Installation

If propellers are not pre-installed or need replacement:

1. Identify the correct propeller for each motor (marked A or B).
2. Attach the propeller to the corresponding motor shaft and secure it with the provided screws using the screwdriver.
3. Ensure all propellers are firmly attached and rotate freely without obstruction.

4.3. SD Card Installation

Insert the provided 8GB Micro SD card into the drone's camera slot to store photos and videos.

SD Card

Dual camera switching, multi perspective,
creating more freely



Image: A Micro SD card shown alongside the drone and its remote, indicating its use for media storage.

4.4. Powering On and Pairing

1. Place the drone on a flat, level surface.
2. Press and hold the power button on the drone until the indicator lights turn on.
3. Turn on the remote control. The remote and drone should automatically pair. The LCD screen on the remote will display the camera feed once connected.
4. If the remote defaults to a non-English language, navigate through the settings menu on the remote's LCD screen to select English.

Built-in Screen

Screen Size
4.3 inches

Transmission distance
50m



Image: The drone's remote control featuring a 4.3-inch HD LCD screen, showing the live video feed from the drone's camera.

5. OPERATING INSTRUCTIONS

5.1. Basic Flight Controls

- **One-Key Takeoff/Landing:** Press the designated button on the remote control for automatic takeoff or landing.
- **Headless Mode:** Activates a mode where the drone's orientation is irrelevant to control inputs, simplifying flight for beginners.
- **Optical Flow Positioning:** Helps the drone maintain a stable hover, especially useful for indoor flight or in areas with minimal wind.

Beginner Friendly



Optical Flow Hover



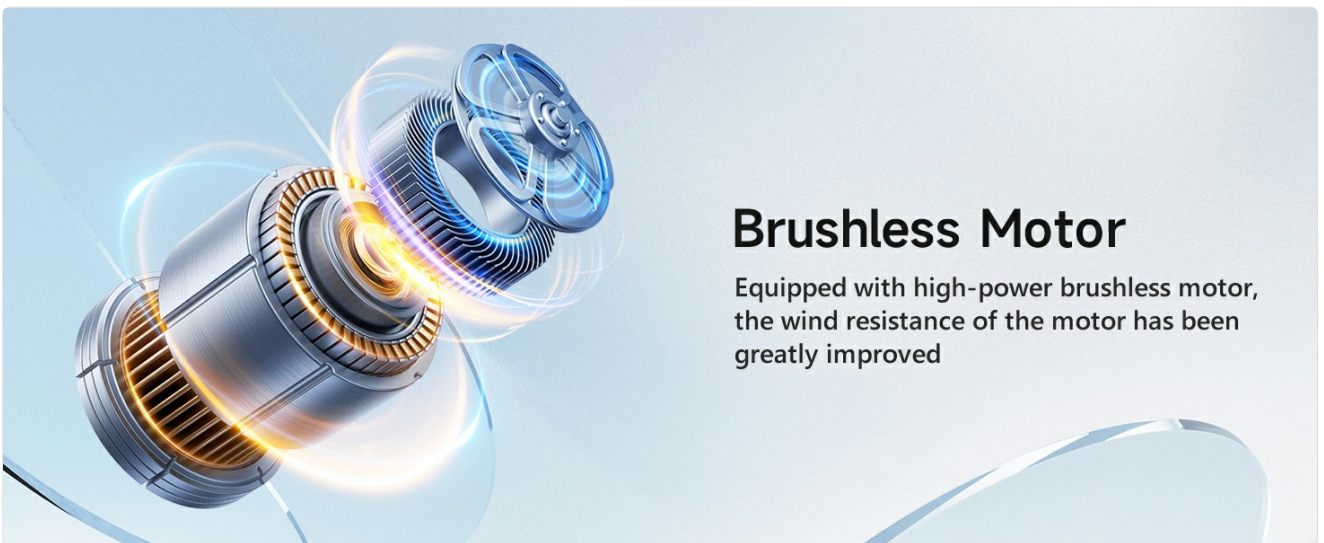
One key start/landing



Headless Mode



Image: Visual guide demonstrating beginner-friendly features like Optical Flow Hover, One-Key Start/Landing, and Headless Mode.



Brushless Motor

Equipped with high-power brushless motor, the wind resistance of the motor has been greatly improved

Image: The drone utilizing Floating Optical Flow technology to maintain a stable position above a grassy field.

One-Click Control

One-click takeoff and landing:
beginners can get started in seconds



Image: The drone performing a one-click takeoff from a designated landing pad, illustrating ease of use.

5.2. Advanced Flight Features

- **Obstacle Avoidance:** The drone is equipped with an obstacle avoidance system that automatically detects and helps prevent collisions.
- **360° Flips:** Execute aerial stunts with a single button press on the remote control.
- **Waypoint Fly:** Plan a custom flight path within the companion application, and the drone will follow the pre-set route.
- **Gesture Control:** Use specific hand gestures to trigger photo or video recording.

Intelligent obstacle avoidance

The obstacle avoidance head is set to automatically detect obstacles



Image: The drone navigating through a forest, illustrating its intelligent obstacle avoidance capabilities.

Obstacle Avoidance

The obstacle avoidance head is configured to automatically detect obstacles

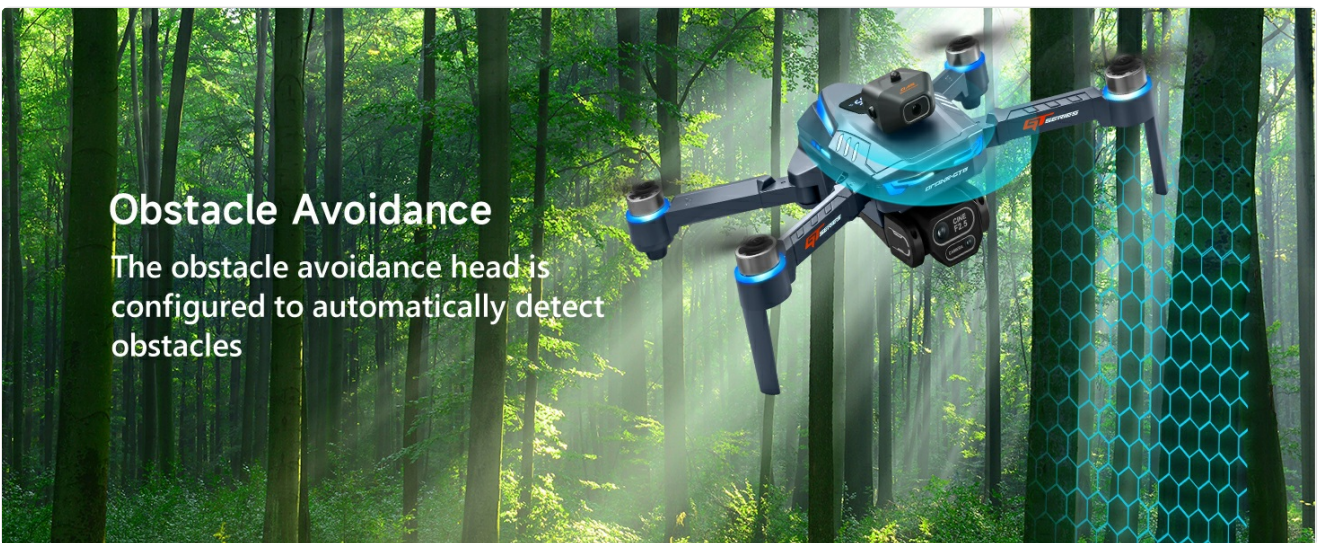


Image: The drone demonstrating its obstacle avoidance feature while flying within a wooded area.



Image: The drone executing a pre-programmed flight path over a scenic river, showcasing the Waypoint Fly feature.



Image: A sequence of images depicting the drone performing a 360-degree flip, highlighting its stunt capabilities.

5.3. Camera Operation

The GT8 drone features a 4K HD camera with a 90° wide-angle lens. The lens can be manually tilted 90 degrees for varied perspectives.

- **Photo/Video Capture:** Use the dedicated buttons on the remote control to take photos or start/stop video recording.
- **EIS Electronic Image Stabilization:** This feature enhances image clarity and reduces shake in photos and videos.
- **Zoom Function:** Utilize the digital zoom feature for closer shots.
- **Beauty Filters:** Apply filters to enhance captured images.

High definition
main camera Remote
control adjustment



HD

High definition aerial
photography pixels

5 times

Multi focal segment
lossless amplification

90°

Remote control
adjustment

Image: A detailed view of the drone's 4K HD camera, highlighting its 90-degree manual tilt capability and high-definition pixels.

EIS Smart Anti-Vibration

Upgraded main camera algorithm,
intelligent anti shake and stable shooting



Image: A side-by-side comparison demonstrating the effectiveness of EIS Smart Anti-Vibration in producing stable and clear footage.

Foldable & portable

Convenient for work and travel
with storage bag



Image: The drone's 4K HD camera system, indicating its capability for dual camera switching and multiple perspectives.

Rich In Features

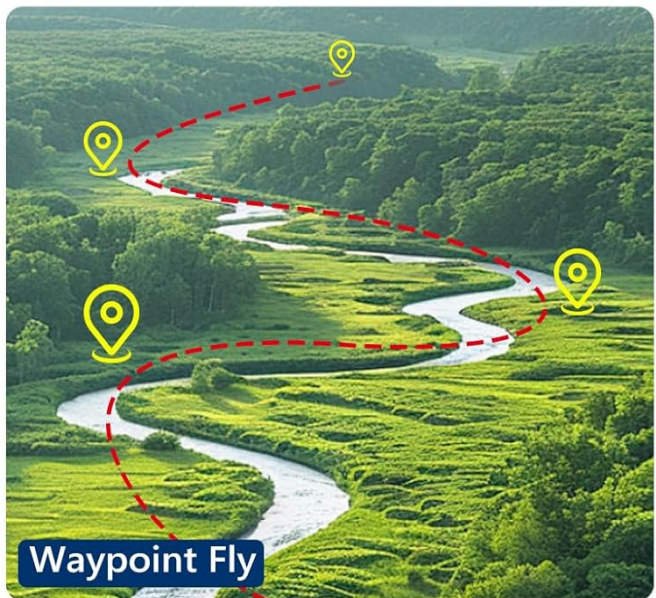
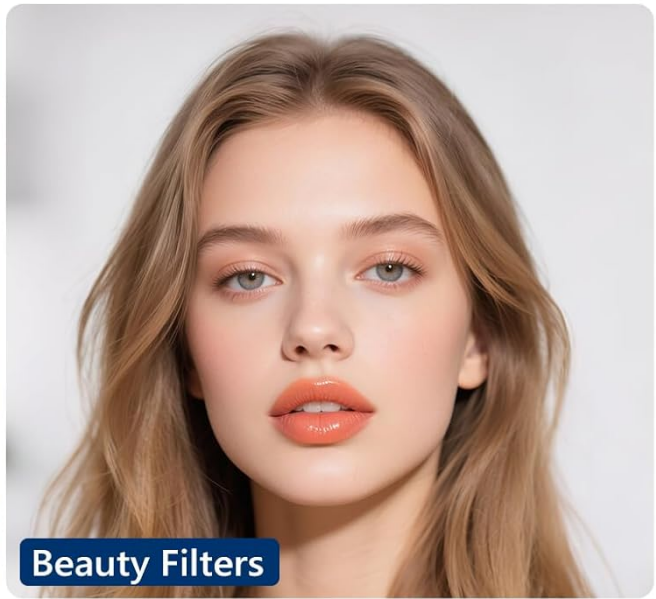


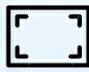
Image: A collage showcasing various drone features including zoom, beauty filters, gesture photo capture, and waypoint flight.

6. MAINTENANCE

- **Cleaning:** Use a soft, dry cloth to clean the drone and remote control. Avoid using liquids or solvents.
- **Propeller Inspection:** Regularly check propellers for cracks, bends, or damage. Replace any damaged propellers immediately.
- **Battery Storage:** Store batteries in a cool, dry place, partially charged (around 50%) if not used for extended periods.
- **Motor Care:** The brushless motors are designed for durability. Keep them free from dust and debris.

RC With Built-in Screen

No need for mobile connection

 Screen Size
4.3inches


 Transmission distance
50m



Image: An illustration of the drone's brushless motor, highlighting its internal components and design for improved wind resistance.

7. TROUBLESHOOTING

Problem	Possible Cause	Solution
Drone does not take off or flies erratically.	<ul style="list-style-type: none">Low battery.Improper calibration.Damaged propeller or motor.Strong wind conditions.	<ul style="list-style-type: none">Ensure batteries are fully charged.Recalibrate the drone on a flat surface.Inspect propellers and motors for damage; replace if necessary.Fly in calm conditions.
Remote control LCD screen is blank or not displaying video.	<ul style="list-style-type: none">Remote control battery low.Not paired correctly.Out of transmission range.	<ul style="list-style-type: none">Charge the remote control.Re-pair the drone and remote control.Ensure drone is within the 50m transmission range.
Remote control language resets to Chinese.	<ul style="list-style-type: none">Software setting default.	<ul style="list-style-type: none">Re-select English from the settings menu each time the remote is powered on.
Poor image/video quality.	<ul style="list-style-type: none">Insufficient lighting.EIS not active or ineffective in extreme conditions.Lens obstruction.	<ul style="list-style-type: none">Ensure adequate lighting.Verify EIS is enabled.Clean the camera lens.

8. SPECIFICATIONS

Feature	Detail
Brand	AXNEN
Model Name	GT8
Special Feature	Foldable
Color	Dark Blue
Video Capture Resolution	4K
Connectivity Technology	USB (for charging)
Item Weight	177 Grams (6.2 ounces)
Video Capture Format	MP4
Control Type	Remote Control
Material	Plastic
Wireless Communication Technology	2.4GHz RF
Battery Cell Composition	Lithium Ion
Batteries Included	Yes (2 drone batteries, 2 AA for remote)
Remote Control Included	Yes
Optical Sensor Technology	Optical Flow
Product Dimensions	11.22"L x 10.24"W x 2.84"H
Flight Duration	Up to 30 minutes (with two batteries)
Remote Screen Size	4.3 inches
Transmission Distance	50m (approx.)

9. WARRANTY & SUPPORT

For warranty information, technical support, or service inquiries, please refer to the contact details provided on the product packaging or the official AXNEN website. Keep your purchase receipt as proof of purchase for warranty claims.