

Manuals.plus /

› fishkeeper /

› fishkeeper FK130-8W Electric Aquarium Gravel Cleaner and Water Changer User Manual

fishkeeper FK130-8W

fishkeeper FK130-8W Electric Aquarium Gravel Cleaner and Water Changer User Manual

Model: FK130-8W | Brand: fishkeeper

1. INTRODUCTION

The fishkeeper FK130-8W Electric Aquarium Gravel Cleaner and Water Changer is a versatile tool designed for efficient aquarium maintenance. It integrates automatic water changing, sand washing, debris removal, and water filtration into a single device. The unit features a scraper-edged, grid-guarded duckbill intake to effectively dislodge and suction biofilm and sludge. A debris cup with a filter sponge captures fine waste, protecting the pump and ensuring clean substrate. This device is suitable for both freshwater and saltwater tanks.

Important Safety Note: The handle controller is not waterproof. Ensure it remains dry and away from water sources during operation and cleaning.

2. PRODUCT COMPONENTS

Carefully unpack the box and verify that all components are present and undamaged. The package should include:

- Handle controller with integrated buttons and battery indicator
- Filter chamber with filter sponge
- Water pump
- Water inlet pipes (x2, 34.5cm/13.58in each)
- Connector for 2 water inlet tubes
- Sand-washing cup (x1)
- Plastic blade (x1)
- Water tube (x1, 1.3cm/0.51in, 6.56ft/2m)

- Power Adapter (x1, 5ft/1.55m)



Figure 2.1: Exploded view of the fishkeeper FK130-8W Electric Aquarium Gravel Cleaner components.

3. SETUP INSTRUCTIONS

Follow these steps to assemble your fishkeeper aquarium cleaner:

1. **Attach Extension Tubes:** Connect the extension tubes to the dual water intake connector. The length can be adjusted based on your tank's depth.
2. **Secure Handle and Pump Unit:** Attach the handle and pump unit to the opposite end of the assembled extension tube.
3. **Connect DC Power:** Align the DC connector with its port on the handle. Ensure the O-ring seal is properly seated to prevent water ingress. Firmly tighten the connection.
4. **Install Accessory:** Attach the desired accessory (e.g., gravel vacuum head or plastic blade) to the pump's intake port.
5. **Install Drainage Hose:** Securely install the drainage hose onto the L-shaped outlet tube of the filter

chamber.

6. **Submerge Pump:** Before connecting to power, ensure the pump unit is fully submerged in the aquarium water. Operating the pump without water can cause immediate overheating and permanent damage.

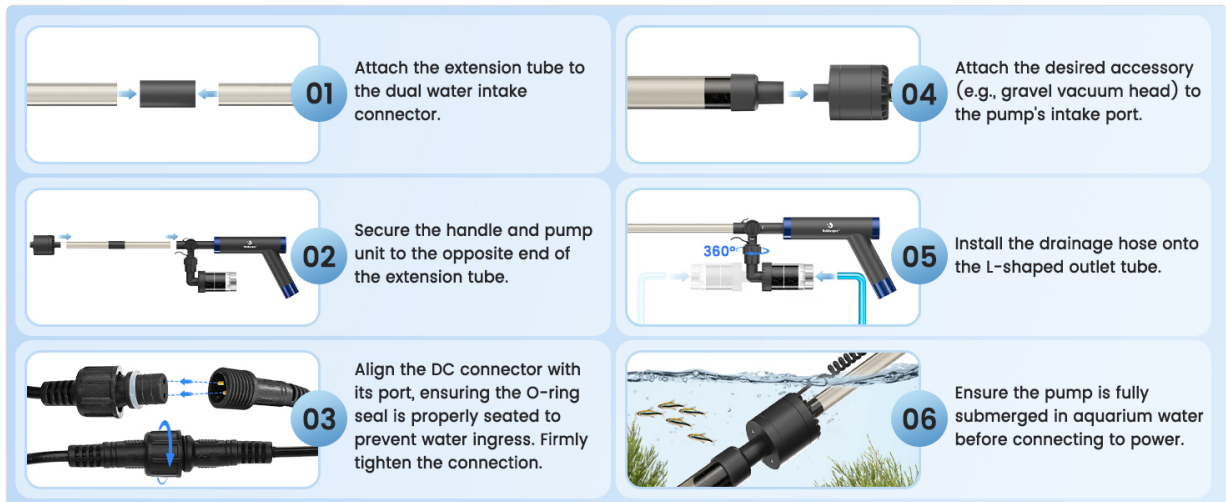


Figure 3.1: Visual guide for assembling the fishkeeper FK130-8W cleaner.

Your browser does not support the video tag.

Video 3.1: Official product video demonstrating the assembly and initial operation of the fishkeeper aquarium gravel cleaner.

4. OPERATING INSTRUCTIONS

The fishkeeper FK130-8W offers two primary operating modes: Clean Mode and Wash Mode.

4.1 Powering On and Mode Selection

The device can be operated in two power modes: **Plug-in Mode** for continuous power or **Cordless Mode** using the rechargeable battery for portability.

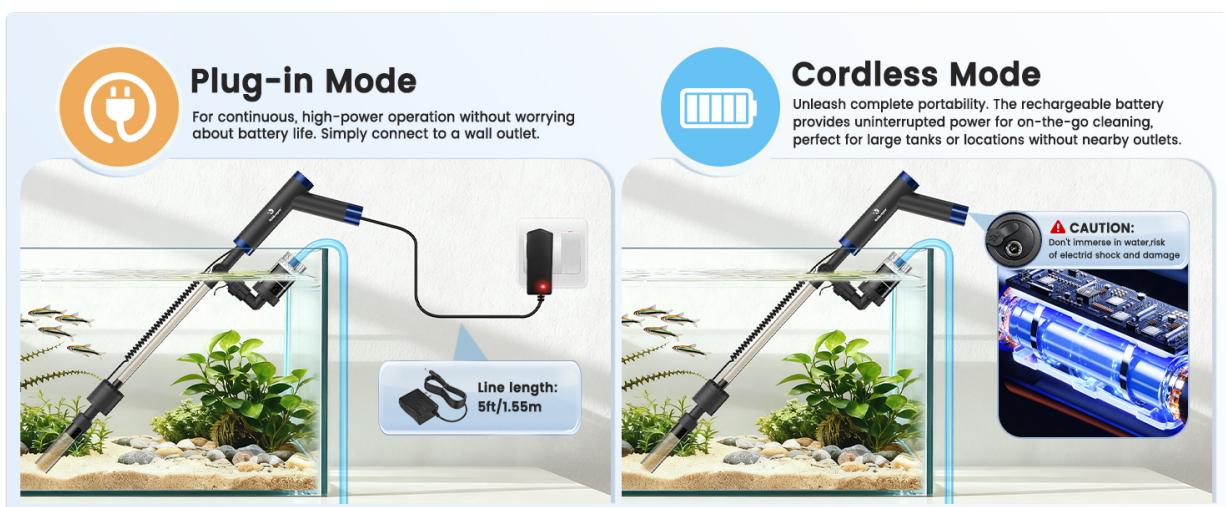


Figure 4.1: Plug-in vs. Cordless operation modes.

The handle controller features indicator lights for battery level and selected mode:

- **Battery Level Indicator Light:**
 - Green (Constantly on): Approximately 2 hours of power supply.

- Yellow (Constantly on): Approximately 1.2 hours of power supply.
 - Red (Constantly on): Approximately 0.6 hours of power supply.
 - Red (Flashing): Approximately 10 minutes of power supply remaining.
- **Switch/Clean Mode Indicator Light:** Illuminates when Clean Mode is active.
 - **Wash Mode Indicator Light:** Flashes when Wash Mode is active.

Figure 4.2: Handle controller button and indicator light descriptions.

4.2 Clean Mode (Gravel & Waste)

In Clean Mode, the motor runs continuously for sand washing, cleaning, and adding water (from low to higher water level). This mode is ideal for removing debris from the substrate.

- Submerge the pump completely in water before activating.
- Gently lift and lower the vacuum head into the gravel. The pulsating action agitates the sand, releasing trapped waste such as fish waste, uneaten food, and other debris.
- The released debris is drawn up by the suction, while the cleaned sand settles back down.
- The scraper-edged duckbill intake helps dislodge biofilm and sludge from surfaces.



Figure 4.3: Cleaning Mode in action, demonstrating gravel cleaning.



Figure 4.4: Detail of the scraper edge and pre-filter mechanism.

4.3 Wash Mode (Water Exchange)

In Wash Mode, the motor operates for approximately 2 minutes to initiate water flow. After this initial period, the siphon principle takes over to complete the water change without consuming additional electricity.

- Ensure the drainage hose is directed into a suitable waste container.
- Activate Wash Mode. The pump will run briefly to start the siphon.
- Monitor the water level and turn off the device or remove the hose when the desired amount of water has been drained.
- When draining water from the bottom of the tank, switch to Cleaning Mode for more thorough drainage.

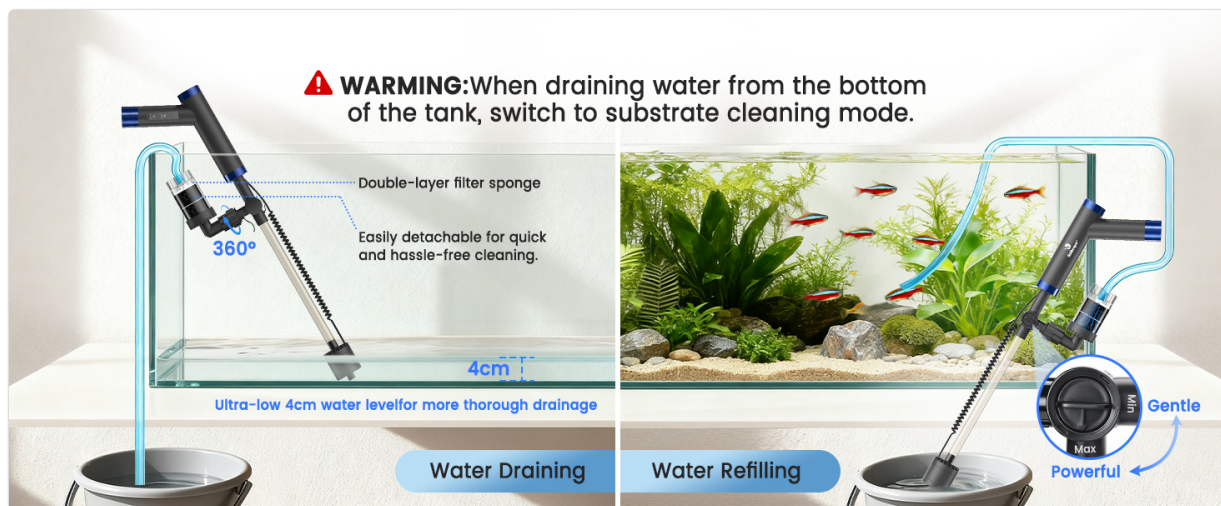


Figure 4.5: Water Draining and Refilling capabilities.

5. MAINTENANCE

Regular maintenance ensures optimal performance and extends the lifespan of your fishkeeper cleaner.

- **Pump Cleaning:** Regularly disassemble the pump housing and impeller to remove any accumulated debris. This prevents clogging and maintains efficient operation.
- **Filter Sponge:** The debris cup contains a washable filter sponge. Remove and rinse the sponge thoroughly after each use to ensure effective filtration.
- **General Cleaning:** Rinse all components with clean water after use. Ensure no debris remains in the tubes or attachments.



Figure 5.1: Pump cleaning and maintenance guide.

6. TROUBLESHOOTING

If you encounter issues with your fishkeeper cleaner, refer to the following common troubleshooting tips:

- **No Power/Device Not Turning On:**

- Ensure the battery is fully charged or the power adapter is securely connected and receiving power.
- Check the DC connector for proper alignment and a secure O-ring seal.
- Verify that the pump unit is fully submerged in water before attempting to power on.

- **Weak Suction or No Water Flow:**

- Confirm the pump is completely submerged and the water level is above the minimum line.
- Check for blockages in the intake nozzle, extension tubes, or filter chamber. Clean any debris.
- Ensure the filter sponge in the debris cup is clean and not clogged.
- If air is trapped inside the pump, remove the pump from the water, lift it above the tank surface, gently shake or tilt it to expel air bubbles, then fully submerge and restart.
- Verify that the flow regulator switch (if applicable) is set to the desired flow rate.

- **Water Leaks:**

- Inspect all connections, especially the DC connector and tube joints, for proper seating and tightness.
- Check O-rings for damage or misalignment.

- **Difficulty with Assembly:**

- Refer to the detailed assembly steps in Section 3 and Figure 3.1.
- Ensure all parts are correctly oriented and securely fastened. Some tubing may require firm pressure to connect.

7. SPECIFICATIONS

Feature	Detail
Model Name	FK130-8W
Brand	fishkeeper
Power	8W
Flow Rate	213 GPH (800 L/H)
Functions	Automatic Water Changing, Sand Washing, Debris Removal, Water Filtration
Power Source	Rechargeable Battery / Plug-in (AC/DC power supply)
Battery Life (Green)	Approx. 2 hours
Water Tube Length	6.56 ft (2m)
Power Adapter Cable Length	5 ft (1.55m)
Item Weight	2.4 pounds
Item Package Dimensions	15.2 x 7.87 x 3.7 inches
Compatibility	Freshwater and Saltwater Tanks



Figure 7.1: The cleaner's adjustable length for various tank sizes.

8. WARRANTY AND SUPPORT

The fishkeeper FK130-8W Electric Aquarium Gravel Cleaner and Water Changer comes with a **2-year warranty** from the date of purchase, covering manufacturing defects and malfunctions under normal use.

For technical support, warranty claims, or any questions regarding your product, please contact fishkeeper customer service through the retailer where you purchased the product or visit the official fishkeeper website for contact information.

