

## ETIKEZ PM290C

# ETIKEZ PM290C Mini Portable Thermal Sticker Printer User Manual

Model: PM290C | Brand: ETIKEZ

## INTRODUCTION

---

The ETIKEZ PM290C is a compact and portable thermal sticker printer designed for various uses, including printing photos, notes, labels, and creative designs. This inkless printer connects wirelessly via Bluetooth to your iOS or Android device, utilizing the 'Labelnize' smart application for enhanced functionality. It prints exclusively in black and white.

## WHAT'S INCLUDED

---

Upon unboxing your ETIKEZ PM290C printer, please verify that all the following items are present:

- 1x ETIKEZ PM290C Sticker Printer
- 3x Rolls of 54mm × 3.5m White Adhesive Thermal Paper
- 1x User Manual
- 1x Guide Card
- 1x USB Type-C Cable

# Multipurpose Pocket Printer

Widely Applied in Daily Life



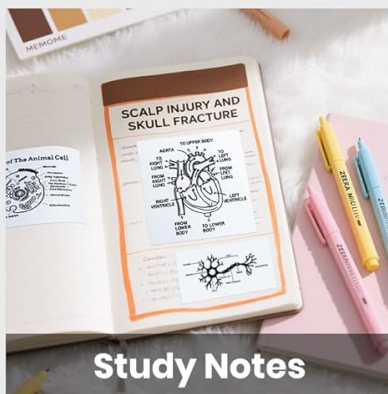
Gift Card



Photo



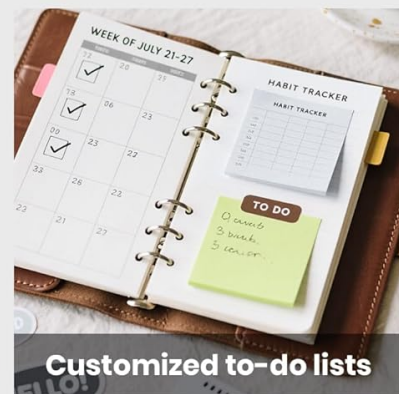
Note



Study Notes



Journals



Customized to-do lists

Image: Packaging contents of the ETIKEZ PM290C Mini Portable Thermal Sticker Printer.

## SETUP

### 1. App Download and Installation

The ETIKEZ PM290C printer operates via the 'Labelnize' application. Download the app from your device's app store:

For iOS devices: Search for "Labelnize" in the Apple App Store.

For Android devices: Search for "Labelnize" in the Google Play Store.

# Bluetooth Connection

**Tips:** The Bluetooth should be connected within the Labelnize APP

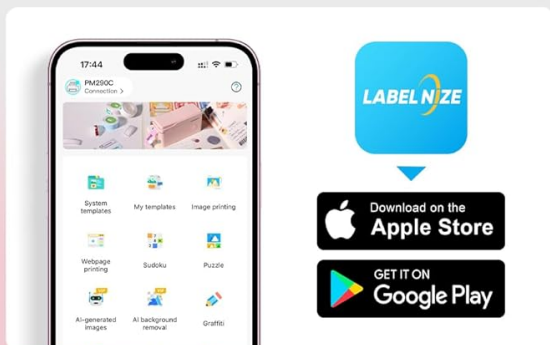


Image: Instructions for downloading the 'Labelnize' app.

## 2. Loading Thermal Paper

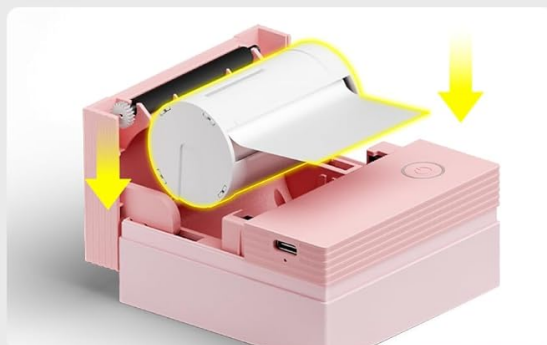
1. Open the paper bin cover of the printer.
2. Load a roll of thermal sticker paper into the paper bin. Ensure the paper feeds smoothly and the printing side is facing up.
3. Close the paper bin cover securely.

# How to Use Sticker Printer



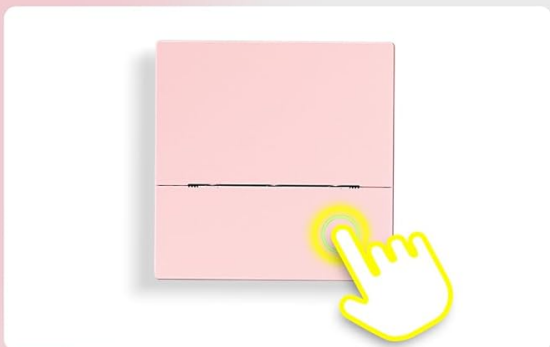
## Step 1

Download the "Labelnize" APP, turn on the sticker printer



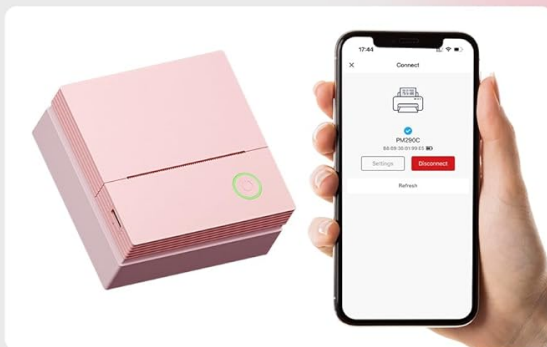
## Step 2

Load the thermal paper into the printer



## Step 3

Press the button and turn on the printer



## Step 4

Turn on Bluetooth of your phone, then connect to the printer

Image: Steps for loading thermal paper into the printer.

## 3. Bluetooth Connection

1. Press and hold the power button on the printer until the white light flashes.
2. Enable Bluetooth on your smartphone or tablet.
3. Open the 'Labelnize' app. Within the app, select "PM290C" from the list of available devices to establish a connection. **Note:** Connect via Bluetooth within the Labelnize app, not directly through your phone's Bluetooth settings.

Your browser does not support the video tag.

Video: Demonstrates the printer's setup, including paper loading and app connection (0:00-0:11).

## OPERATING INSTRUCTIONS

The ETIKEZ PM290C printer offers versatile printing options through the 'Labelnize' app.

### Text and Template Printing

The app provides a variety of templates and fonts for printing notes, lists, and other text-based content. You

can select pre-designed layouts or create your own.



Image: Multiple free templates and fonts available in the Labelnize app.

## OCR Text Recognition

Utilize the Optical Character Recognition (OCR) feature within the app to scan text from documents and print it directly. This is useful for digitizing notes or extracting information.

Your browser does not support the video tag.

Video: Demonstrates OCR printing functionality (0:11-0:18).

## Photo Editing and Printing

The app allows you to select photos from your device, apply layouts, and print them in monochrome. This is ideal for creating personalized stickers for journals or decorations.



# Bullet Journal

Only Prints in Black Fonts  
(No Color Printing)

Image: Printer in use for bullet journaling with printed photos.

Your browser does not support the video tag.

Video: Shows photo editing and printing process (0:21-0:30).

## AI Image Generation

The 'Labelnize' app integrates AI core functions, including AI Text-to-Image, One-Click Background Removal, and OCR Text Recognition. These features optimize printing workflows for enhanced efficiency and creativity.

Your browser does not support the video tag.

Video: Demonstrates AI image generation and printing (0:48-0:54).

## Multipurpose Use

The PM290C can be used for various applications:

- **Study Notes:** Print diagrams, definitions, or key information.
- **Journals:** Add personalized photos and stickers.
- **Labels:** Create labels for home organization, gift tags, or file categorization.

# Excellent Printer for Parents & Kids

Only for 54mm continuous labels



Image: Multipurpose applications of the ETIKEZ PM290C printer.

Your browser does not support the video tag.

Video: Shows the printer being used for home organization labels (0:54-1:00).

## MAINTENANCE

---

### General Care

- Keep the printer clean and free from dust. Use a soft, dry cloth for cleaning the exterior.
- Avoid exposing the printer to extreme temperatures or direct sunlight.
- Store the printer in a dry place when not in use.

### Paper Handling

- Always use thermal paper specifically designed for this printer.
- Ensure the paper roll is inserted correctly to prevent jams.
- If the red light remains on after inserting paper, gently pull out 1–2 cm of paper to ensure proper feeding.

## TROUBLESHOOTING

---

### Common Issues and Solutions

- **Printer not connecting via Bluetooth:** Ensure Bluetooth is enabled on your device and connect through the 'Labelnize' app, not directly through your phone's settings.
- **Red light stays on after inserting paper:** Gently pull out 1–2 cm of paper from the printer. This often resolves minor paper feeding issues.
- **No print output or faint prints:** Check if the thermal paper is loaded correctly with the printing side facing up. Ensure the printer is charged. Adjust printing density in the app (maximum 3F) for improved quality.
- **Printer not charging:** Use the provided USB Type-C cable. Avoid fast-charging adapters, as they may not be compatible or could damage the device.
- **Printer only prints in black and white:** The ETIKEZ PM290C is a thermal printer and is designed to print only in black and white. It does not support color printing.
- **Cannot connect to a computer:** This printer is designed for mobile use and does not support direct connection to computers.

### SPECIFICATIONS

---

Feature	Detail
Model Number	PM290C
Brand	ETIKEZ
Connectivity Technology	Bluetooth
Printing Technology	Thermal
Special Features	Wireless Bluetooth Connectivity, AI Tools, OCR Functionality, Versatile Media Support
Colour	Pink
Controller Type	Android, iOS
Maximum Media Size	54mm x 3.5m
Print Media	Thermal Paper
Compatible Devices	Smartphones, Tablets, iPad, iPhone
Ink Color	Black (monochrome printing only)
Control Method	App
Resolution	600 x 600 dpi
Product Dimensions	10 x 9 x 9 cm
Item Weight	299 g

## WARRANTY AND SUPPORT

---

Your ETIKEZ PM290C Mini Portable Thermal Sticker Printer comes with a standard manufacturer's warranty. For detailed warranty information, product support, or technical assistance, please refer to the contact information provided on the product packaging or visit the official ETIKEZ website. Please retain your proof of purchase for warranty claims.