

WOHPNLE WOHPNLEht6a92krw3-11

WOHPNLE Electric Screwdriver Set 32 in 1 Instruction Manual

1. INTRODUCTION

Thank you for choosing the WOHPNLE Electric Screwdriver Set. This 32-in-1 cordless screwdriver kit is designed for precision tasks, offering advanced torsion control for delicate electronics, RC models, laptops, and phone repairs. This manual provides essential information for safe operation, setup, maintenance, and troubleshooting to ensure optimal performance and longevity of your tool.



Image 1.1: The WOHPNLE Electric Screwdriver Set, including the main screwdriver unit, 32 screw bits, and a charging cable.

2. SAFETY INFORMATION

Please read all safety warnings and instructions carefully before using this product. Failure to follow these instructions may result in electric shock, fire, or serious injury.

- **Keep Work Area Clean:** Cluttered areas invite accidents.
- **Avoid Dangerous Environments:** Do not use power tools in damp or wet locations, or expose them to rain.
- **Keep Children Away:** Do not let children handle the tool. Store idle tools out of reach of children.
- **Dress Properly:** Do not wear loose clothing or jewelry. Contain long hair.
- **Use Eye Protection:** Always wear safety glasses.
- **Do Not Overreach:** Keep proper footing and balance at all times.
- **Disconnect Tools:** Disconnect the tool from the power source before making any adjustments, changing accessories, or storing.
- **Avoid Accidental Starting:** Ensure the switch is in the off position before connecting to a battery pack, picking up or carrying the tool.

- **Check for Damaged Parts:** Before further use of the tool, carefully check for any damaged parts.
- **Use Correct Tool:** Do not force the tool or attachment to do a job for which it was not designed.
- **Battery Safety:** Do not incinerate the battery even if it is severely damaged. The battery can explode in a fire.

3. PACKAGE CONTENTS

Verify that all items listed below are present and in good condition upon opening the package:

- 1 x Electric Screwdriver
- 32 x Screw Bits
- 1 x Charging Cable (Type-C)



Image 3.1: The comprehensive set of 32 screw bits and the Type-C charging cable.

4. PRODUCT FEATURES

The WOHPNLE Electric Screwdriver is engineered with several key features to enhance your repair

experience:

- **Precision Torsion Control:** Prevents over-tightening or stripping screws, ensuring consistent torque for delicate components.
- **Versatile Bit Selection:** Includes 32 different bits suitable for a wide range of screws and devices, simplifying various repair and maintenance tasks.
- **Long Battery Life:** Equipped with a built-in 280mAh lithium battery for extended operating time.
- **Durable Construction:** Crafted from aluminum alloy and steel for robust and reliable performance.
- **Compact and Portable:** Lightweight design for easy carrying and on-the-go repairs.
- **Ultra Clear Display:** Provides clear information during operation.
- **Type-C Charging:** Modern and convenient charging interface.
- **Manual and Auto Operating Modes:** Offers flexibility for different tasks.



Image 4.1: Visual representation of the screwdriver's main features.



Image 4.2: The ultra-clear display indicating battery status and voltage.

5. SETUP

5.1 Initial Charging

Before first use, fully charge the electric screwdriver. Connect the provided Type-C charging cable to the charging port on the screwdriver and plug the other end into a compatible USB power adapter (not included). The display will indicate charging status. A full charge typically takes approximately 60 minutes.

5.2 Inserting Screw Bits

1. Select the appropriate screw bit from the 32-piece set for your task.
2. Gently insert the chosen bit into the magnetic chuck at the tip of the screwdriver. Ensure it is seated firmly.
3. To remove, simply pull the bit out of the chuck.



Image 5.1: The screwdriver ready for use with a bit inserted.

6. OPERATING INSTRUCTIONS

6.1 Power On/Off

The screwdriver powers on automatically when a button is pressed and powers off after a period of inactivity to conserve battery.

6.2 Driving and Removing Screws

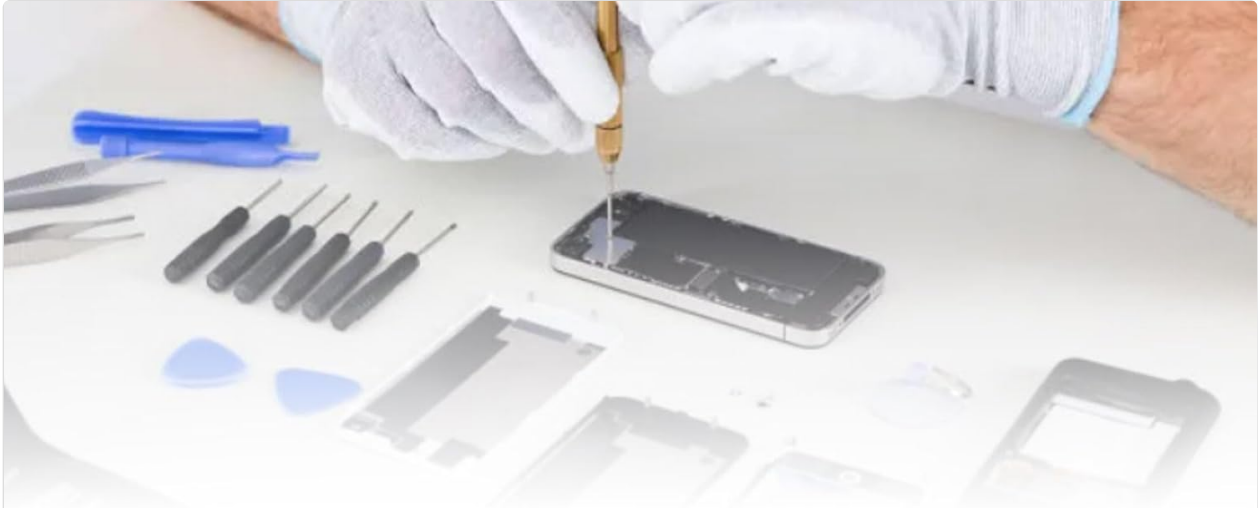
1. Select the correct bit and insert it into the chuck.
2. Position the screwdriver bit onto the screw head.
3. To drive a screw in, press and hold the 'R' (Right/Forward) button.
4. To remove a screw, press and hold the 'L' (Left/Reverse) button.
5. Release the button to stop the motor.

6.3 Torsion Control

The screwdriver features precision torsion control to prevent damage to delicate components. The device automatically adjusts torque to prevent over-tightening. For very sensitive applications, use the manual mode by rotating the screwdriver by hand without engaging the motor.

6.4 Manual Operation

For tasks requiring very fine control or when the battery is depleted, the screwdriver can be operated manually. Simply hold the body of the screwdriver and rotate it as you would a standard manual screwdriver.



ELECTRIC SCREWDRIVER

Featuring an advanced torsion function, this mini electric screwdriver offers precise control, allowing users to avoid over tightening or under tightening screws, thus ensuring optimal performance and protecting.



Image 6.1: The electric screwdriver being used for precision repair work.

7. CHARGING

The WOHPNLE Electric Screwdriver is powered by a built-in 280mAh Li-Battery. To charge the device:

- Locate the Type-C charging port on the screwdriver.
- Connect the provided Type-C USB cable to the screwdriver.
- Plug the other end of the cable into a standard USB power source (e.g., computer USB port, wall adapter, power bank).

- The display will show the charging progress. Once fully charged, the indicator will change or turn off.
- Avoid overcharging the battery. Disconnect the charger once charging is complete.



Image 7.1: Illustration of the internal 280mAh lithium battery, highlighting its long-lasting performance.

8. MAINTENANCE

Proper maintenance ensures the longevity and optimal performance of your electric screwdriver.

- **Cleaning:** Wipe the screwdriver body with a soft, dry cloth. Do not use harsh chemicals or abrasive cleaners. Ensure no liquids enter the charging port or button areas.
- **Bit Care:** Keep screw bits clean and free of debris. Store them in their designated holder to prevent loss and damage.
- **Storage:** Store the screwdriver and bits in a cool, dry place, away from direct sunlight and extreme temperatures. Keep out of reach of children.
- **Battery Care:** For long-term storage, charge the battery to approximately 50% every 3-6 months to maintain battery health.

9. TROUBLESHOOTING

If you encounter issues with your WOHPNLE Electric Screwdriver, refer to the following common problems and solutions:

Problem	Possible Cause	Solution
Screwdriver does not turn on.	Battery is depleted.	Charge the screwdriver fully using the provided Type-C cable.
Motor runs but screw does not turn.	Screw bit is not properly inserted or is stripped.	Ensure the bit is fully seated in the magnetic chuck. Replace the bit if it is worn or damaged.
Screwdriver stops unexpectedly during use.	Battery is low or tool is overloaded.	Recharge the battery. Avoid applying excessive force that could stall the motor.
Screw bit falls out of the chuck.	Bit not fully inserted or magnetic chuck is dirty.	Push the bit firmly into the chuck until it clicks or feels secure. Clean the chuck area if necessary.

10. SPECIFICATIONS

- **Item Type:** Electric Screwdriver Set

- **Material:** Aluminum Alloy, Steel
- **Battery Type:** Li Battery (Built-in)
- **Battery Capacity:** 280mAh
- **Model Number:** WOHPNLEht6a92krw3-11
- **Package Dimensions:** 6.69 x 3.94 x 0.79 inches
- **Item Weight:** 5.82 ounces
- **Manufacturer:** WOHPNLE

11. WARRANTY AND SUPPORT

WOHPNLE products are manufactured to high-quality standards. For warranty information, technical support, or service inquiries, please refer to the contact information provided at the point of purchase or visit the official WOHPNLE website. Please retain your proof of purchase for any warranty claims.