

## Qlaway K078L

# Qlaway Adult Electric Scooter K078L User Manual

Model: K078L

## 1. IMPORTANT SAFETY INFORMATION

Before operating your Qlaway Electric Scooter K078L, please read this manual thoroughly and retain it for future reference. Failure to follow the instructions and safety warnings could result in serious injury or damage to the scooter.

- Always wear a helmet and appropriate safety gear (knee pads, elbow pads) when riding.
- Observe all local traffic laws and regulations.
- Do not ride in wet conditions, heavy rain, or through puddles deeper than 0.8 inches (2 cm). The scooter has an IP65 waterproof rating, but it is not fully submersible.
- Avoid riding on uneven surfaces, potholes, or obstacles.
- The maximum load capacity is 265 lbs (120 kg). Do not exceed this limit.
- This scooter is designed for adults. The recommended age range is adult.
- Maintain a safe speed and distance from other vehicles and pedestrians.
- Regularly check the brakes, tires, and all components for proper function before each ride.
- Do not perform stunts or sudden maneuvers.
- Ensure the scooter is fully charged before long rides.

## 2. PRODUCT OVERVIEW

The Qlaway Adult Electric Scooter K078L is designed for efficient and enjoyable urban commuting. It features a 350W motor, 8.5-inch solid tires, dual braking system, and smart APP control.

# Qlaway 8.5

## Electric Scooter



**19 MPH**  
Max Speed



**350W**  
Powerful Motor



**22 Miles**  
Max Range



Image: The Qlaway Electric Scooter K078L in white, showcasing its sleek design and key features like max speed, motor power, and range.

### Key Features:

- **Powerful Motor:** 350W motor for speeds up to 19 mph.
- **Long Range Battery:** 37V 7.8Ah Lithium Battery providing up to 22 miles range.
- **Solid Tires:** 8.5-inch honeycomb solid tires, puncture-proof and maintenance-free.

- **Dual Braking System:** Electronic brake and drum brake for reliable stopping power.
- **Smart APP Control:** Connects to a mobile application for advanced features and settings.
- **Folding Design:** Lightweight aluminum alloy frame folds in 3 seconds for easy portability.
- **Safety Lighting:** Bright headlight and warning taillight for visibility.

### 3. SETUP AND ASSEMBLY

#### 3.1 Unboxing

Carefully remove all components from the packaging. Ensure all parts listed in the packing list are present. The package should include the scooter, charger, and this manual.

#### 3.2 Unfolding the Scooter

1. Place the scooter on a flat surface.
2. Release the folding latch mechanism located near the base of the handlebar stem.
3. Carefully lift the handlebar stem until it locks into the upright position. Ensure the locking mechanism is securely engaged.
4. Adjust the handlebars if necessary.

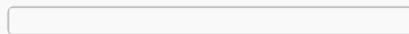


Image: A person demonstrating the three-step folding process of the Qlaway Electric Scooter, highlighting its portability.

#### 3.3 Initial Charging

Before first use, fully charge the scooter's battery. The charging port is typically located on the side of the deck. Connect the charger to the scooter and then to a power outlet. The charging indicator light on the charger will change (e.g., from red to green) when charging is complete. A full charge takes approximately 5 hours.

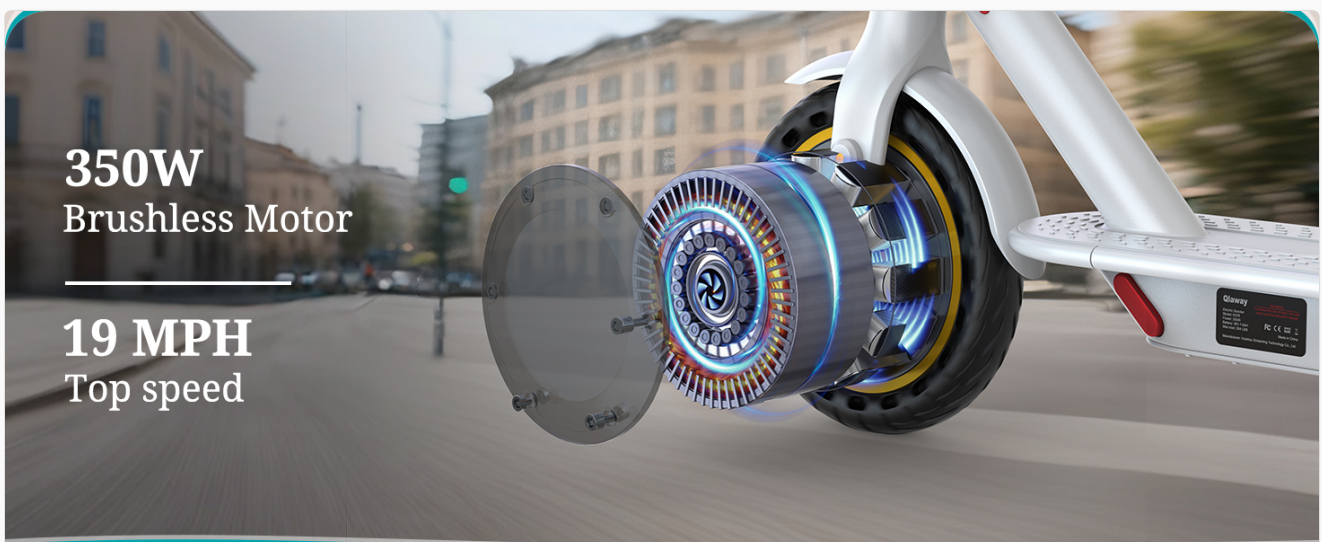


Image: An illustration showing the internal battery structure and details about the 37V/288.6Wh battery, 5-hour fast charging, and 22-mile range.

#### 3.4 APP Connection

Download the Qlaway companion app from your smartphone's app store. Follow the in-app instructions to pair your scooter via Bluetooth. The app allows you to monitor speed, range, battery, operate speed modes, cruise control, and lock/unlock the scooter.

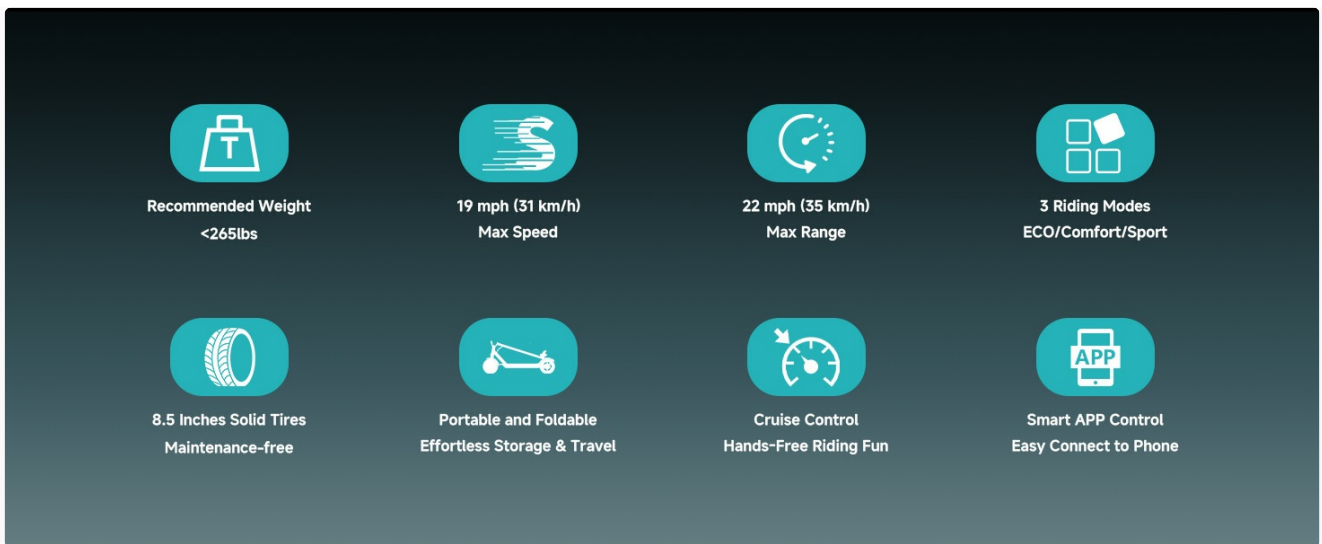


Image: A visual representation of the Qlaway scooter's smart APP management features, including Bluetooth connection, start modes, cruise control, light control, scooter settings, and digital lock.

## 4. OPERATING INSTRUCTIONS

### 4.1 Powering On/Off

Press and hold the power button on the LCD display to turn the scooter on or off. The LCD display will show current speed, battery level, and selected mode.

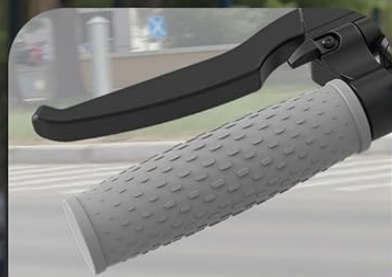


Image: A close-up of the scooter's handlebars and LCD display, illustrating controls for turning lights on/off, switching modes, changing mileage units, switching start modes, activating cruise control, and unlocking the scooter.

### 4.2 Riding the Scooter

1. **Kick Start:** Place one foot on the deck and push off with the other foot to gain initial momentum.
2. **Accelerate:** Gently press the throttle lever to engage the motor and accelerate.
3. **Brake:** Use the electronic brake lever on the handlebar or the drum brake to slow down or stop.
4. **Speed Modes:** Cycle through available speed modes (ECO, D, S) by pressing the mode button on the display or via the app.
5. **Cruise Control:** Activate cruise control by maintaining a consistent speed for a few seconds. Deactivate by pressing the brake or throttle.

# Ride Safely



Electronic Brake



Warning Taillight



Drum Brake



Image: A rider on the Qlaway Electric Scooter, with insets highlighting the electronic brake, warning taillight, and drum brake for safe riding.

## 4.3 Lighting

The scooter is equipped with an LED headlight and a brake taillight for enhanced visibility, especially during low-light conditions. Turn the headlight on/off using the dedicated button on the handlebar or through the app.



Image: A person riding the Qlaway Electric Scooter at dusk, demonstrating the effectiveness of the LED headlight and brake taillight.

## 5. MAINTENANCE

Regular maintenance ensures the longevity and safe operation of your scooter.

### 5.1 Cleaning

Wipe the scooter with a soft, damp cloth. Do not use high-pressure water jets or corrosive cleaning agents. Ensure the charging port cover is securely closed before cleaning.

### 5.2 Battery Care

- Charge the battery regularly, even if the scooter is not in use for extended periods (at least once every 30 days).
- Do not overcharge or completely drain the battery.
- Store the scooter in a cool, dry place, away from direct sunlight and extreme temperatures.

### 5.3 Tire Maintenance

The 8.5-inch honeycomb solid tires are designed to be puncture-proof and require no inflation. Regularly inspect them for wear and tear or damage. While maintenance-free, severe damage may require professional replacement.

### 5.4 Brake System

The brake system requires regular maintenance to ensure optimal braking performance. Check the brake levers and cables for proper tension and responsiveness. If you notice any issues, consult a qualified technician.

### 5.5 General Inspection

Periodically check all screws, bolts, and connections to ensure they are tight and secure. Inspect the folding mechanism for smooth operation and secure locking.

## 6. TROUBLESHOOTING

- **Scooter does not power on:** Ensure the battery is charged. Check the power button for proper function.
- **Motor not engaging:** Ensure the scooter is powered on and the throttle is pressed after a kick-start. Check battery level.
- **Brakes not responsive:** Inspect brake levers and cables. Do not ride if brakes are not functioning correctly.

Seek professional assistance.

- **APP connectivity issues:** Ensure Bluetooth is enabled on your smartphone and the scooter is powered on. Try restarting both the app and the scooter.
- **Reduced range or speed:** This can be affected by rider weight, terrain, temperature, battery age, and riding style. Ensure the battery is fully charged.

## 7. SPECIFICATIONS

Feature	Specification
Brand	Qlaway
Model Name	K078L
Motor Power	350W
Max Speed	19 MPH (31 km/h)
Max Range	22 Miles (35 km)
Battery	37V 7.8Ah (288.6Wh) Lithium Battery
Charging Time	Approx. 5 Hours
Tire Type	8.5 Inch Solid Honeycomb Tires
Brake Style	Electronic Brake + Drum Brake (Rear Braking)
Frame Material	Aluminum Alloy
Weight Limit	265 Pounds (120 kg)
Item Weight	28 Pounds (12.7 kg)
Product Dimensions (Unfolded)	42"L x 17"W x 44"H (106.7cm L x 43.2cm W x 111.8cm H)
Waterproof Rating	IP65
Special Features	Cruise Control, Digital Display, Dual Braking System, APP Control



## LED Headlight

## Brake Tail Light



LED Headlight



Brake Tail Light

Image: Visual representation of the Qlaway Electric Scooter's dimensions, both folded and unfolded.

## 8. WARRANTY AND SUPPORT

### 8.1 Warranty Information

The Qlaway Electric Scooter K078L comes with a **6-month limited warranty** from the date of purchase. This warranty covers manufacturing defects under normal use. It does not cover damage caused by misuse, accidents, unauthorized modifications, or normal wear and tear. Please retain your proof of purchase for warranty claims.

### 8.2 Customer Support

For technical assistance, warranty claims, or any questions regarding your Qlaway Electric Scooter K078L, please contact the seller or manufacturer directly. Refer to your purchase documentation for specific contact details.