

Manuals+

[Q & A](#) | [Deep Search](#) | [Upload](#)

Manuals.plus /

› [Norelco](#) /

› Philips Norelco Body Groomer 7000 Series (BG7480/50) Instruction Manual

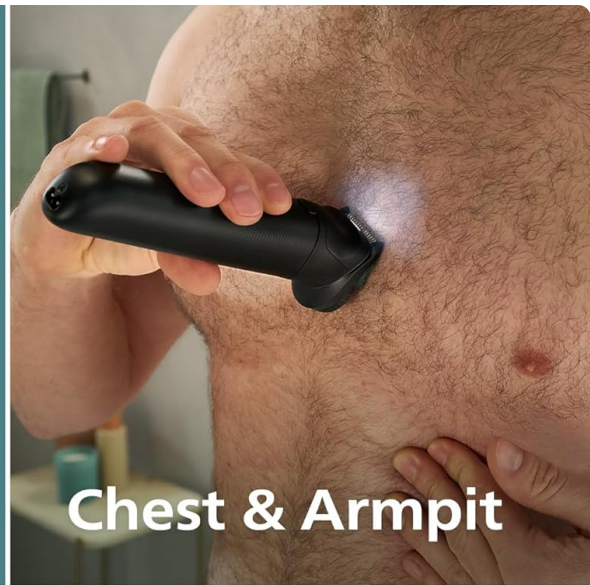
Norelco BG7480/50

Philips Norelco Body Groomer 7000 Series (BG7480/50) Instruction Manual

1. INTRODUCTION AND OVERVIEW

The Philips Norelco Body Groomer 7000 Series, model BG7480/50, is engineered for comprehensive full-body grooming, ensuring comfort and precision. This device is designed to adapt to your body's contours, providing an effective and skin-friendly experience across various body zones, including intimate and hard-to-reach areas. Its 100% showerproof design allows for convenient wet and dry use, simplifying your grooming routine and cleaning process.

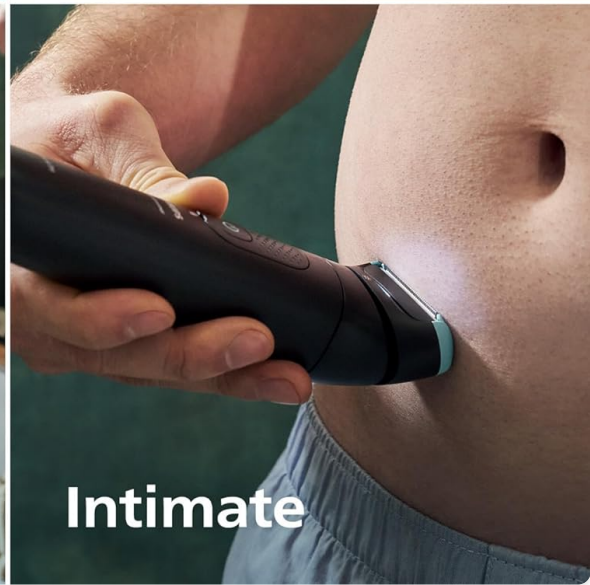
Full-body & intimate grooming



Chest & Armpit



Back



Intimate

Image: The Philips Norelco Body Groomer 7000 Series in use for full-body and intimate grooming, highlighting its versatility for chest, armpit, back, and intimate areas.

2. WHAT'S IN THE BOX

Your Philips Norelco Body Groomer 7000 Series package includes the following components:

- 2D Flexing Shaver Head
- Trimmer Head
- Adjustable Precision Comb (1-3 mm)
- Adjustable Comb (3-7 mm)
- Intimate Comb
- Foldable Back Attachment
- Charging Stand
- USB-A Cable (Power adapter not included)
- Soft Pouch

What's in the box



2D Flexing
shaver head



Trimmer
head



Adjustable
precision comb
1-3 mm



Adjustable
comb
3-7 mm



Intimate
comb



Foldable back
attachment



Charging
stand



Soft pouch



USB-A cable

Image: All components included in the Philips Norelco Body Groomer 7000 Series package, laid out for clear identification.

3. KEY FEATURES

- **Interchangeable Dual Trimmer & 2D Flexing Shaver Heads:** Effortlessly switch between a trimmer and a shaver. The 2D flexing foil shaver head adapts to body contours and illuminates the target area with Optilight for a close, effective, and skin-friendly shave.



Dual head trim & shave system

Interchangeable shaver
and trimmer blades
for optimal skin comfort



Image: The main body groomer unit alongside its interchangeable trimmer and shaver heads.

- **Triple Skin Protect Shave System:** Features patented pearl tips for enhanced skin comfort, a hypoallergenic shaver foil, and a skin guard to minimize irritation during shaving.



Image: Detailed view of the Triple Protect shave system, illustrating its components for skin safety.

- **Skin-Friendly Trimmer Blades:** Uniquely designed with rounded tips for improved skin comfort, capable of handling even dense hair.
- **Versatile Trimming Lengths:** Choose from 11 trimming lengths ranging from 0.2 mm to 7 mm using the included adjustable combs (1-3 mm, 3-7 mm) and an intimate comb. The Optilight provides clear visibility across all body zones.

2D flexing head with optilight

Contour-following technology adapts to the body curves and illuminates the target area



Image: The 2D flexing head with Optilight in action, showing how it illuminates the grooming area.

- **Foldable Back Attachment:** Extends your reach for comfortable and easy back hair removal.

Foldable back attachment

Designed for
improved
reachability in
hard-to-reach
areas



Image: A man demonstrating the use of the foldable back attachment for extended reach during grooming.

- **100% Showerproof:** Designed for convenient wet & dry use and easy cleaning under running water.



100% showerproof

Comfortable and convenient
grooming, wet or dry



Image: The body groomer shown with water droplets, emphasizing its 100% showerproof capability.

- **Long-Lasting Li-Ion Battery:** Provides up to 120 minutes of cordless use after a 1-hour charge. Includes a charging stand and travel lock.



Image: The USB-A charging cable and visual indicators for the device's 120-minute runtime and 1-hour charging time.

4. SETUP

4.1 Charging the Device

1. Ensure the device is turned off.
2. Connect the USB-A cable to the charging stand.
3. Plug the USB-A cable into a compatible USB power adapter (not included).
4. Place the Body Groomer onto the charging stand. The charging indicator will illuminate.
5. A full charge takes approximately 1 hour, providing up to 120 minutes of cordless use.

4.2 Attaching and Detaching Heads & Combs

1. **To attach a head:** Align the desired head (shaver or trimmer) with the body of the groomer and press firmly until it clicks into place.
2. **To detach a head:** Gently pull the head away from the body of the groomer.
3. **To attach a comb:** Slide the desired comb (adjustable or intimate) over the trimmer head until it locks securely.

4. **To adjust comb length:** For adjustable combs, use the integrated slider to select your preferred length setting (0.2-7 mm).
5. **To detach a comb:** Gently slide the comb off the trimmer head.
6. **To attach the foldable back attachment:** Connect the groomer to the back attachment until it clicks. Adjust the angle for optimal reach.

5. OPERATING INSTRUCTIONS

5.1 General Grooming Tips

- For best results, ensure your skin is clean. The device can be used wet or dry.
- Stretch the skin taut with your free hand to ensure an even and comfortable glide.
- Move the groomer slowly and steadily against the direction of hair growth.
- Utilize the Optilight feature for enhanced visibility in dimly lit areas or for precise detailing.

5.2 Using the Trimmer Head with Combs

1. Attach the desired comb (adjustable or intimate) to the trimmer head.
2. Select your preferred trimming length using the comb's adjustment mechanism.
3. Turn on the device and place the comb flat against your skin.
4. Move the trimmer in smooth, controlled strokes against the hair growth.

5.3 Using the Shaver Head for a Skin-Close Shave

1. Ensure the 2D flexing shaver head is attached.
2. For longer hair, it is recommended to pre-trim with the trimmer head first.
3. Turn on the device and place the shaver head flat against your skin.
4. Move the shaver in gentle, circular or linear motions, stretching the skin as needed.
5. The Triple Skin Protect system is designed to minimize irritation, even in sensitive areas.

5.4 Using the Foldable Back Attachment

1. Attach the groomer to the foldable back attachment.
2. Adjust the angle of the attachment to comfortably reach all areas of your back.
3. Turn on the groomer and use smooth, even strokes to remove hair.

5.5 Activating Travel Lock

- To activate the travel lock, press and hold the power button for 3 seconds. The device will indicate that it is locked.
- To deactivate the travel lock, press and hold the power button again for 3 seconds. The device will unlock and be ready for use.

6. MAINTENANCE

6.1 Cleaning the Device

- After each use, turn off the groomer.
- Detach the shaver or trimmer head and any attached combs.
- Rinse the heads and combs thoroughly under running water to remove hair and debris.
- You can also rinse the main body of the groomer as it is 100% showerproof.
- Allow all parts to air dry completely before reattaching or storing.

6.2 Blade Replacement

The Philips Norelco Body Groomer 7000 Series is designed for durability, with blades that do not require oiling. Replace the shaver foil and trimmer blades as needed to maintain optimal performance. Replacement parts can be purchased from authorized Philips Norelco retailers.

7. TROUBLESHOOTING

- **Device not turning on:** Ensure the device is fully charged. Check if the travel lock is activated and deactivate it if necessary.
- **Poor trimming/shaving performance:** Ensure the blades are clean and free of hair. The battery might be low; recharge the device. Consider replacing the shaver foil or trimmer blades if they are dull or damaged.
- **Skin irritation:** Ensure the blades are clean. Always stretch the skin taut during grooming. Use the appropriate comb for sensitive areas.

8. SPECIFICATIONS

- **Model Name:** BG7480/50
- **Power Source:** Battery Powered (Li-Ion)
- **Runtime:** Up to 120 minutes cordless
- **Charging Time:** 1 hour for full charge
- **Special Features:** Cordless, Ergonomic Design, Rechargeable, Skin Protection System, Washable, Optilight, Travel Lock
- **Recommended Uses:** Armpit, Back Hair, Chest, Leg, Pubic
- **Waterproof:** 100% Showerproof
- **Item Model Number:** BG7480/50
- **UPC:** 075020109576

9. WARRANTY AND SUPPORT

The Philips Norelco Body Groomer 7000 Series comes with a standard 2-year warranty. An extended warranty of up to 5 years is available upon product registration within 90 days on Philips.com. For

further support, troubleshooting, or warranty claims, please visit the official Philips Norelco website or contact their customer service.