

Yaheetech 5016397

Yaheetech 80 cm Folding Computer Desk with Monitor Shelf - Instruction Manual

1. SAFETY INFORMATION

Please read all safety instructions carefully before using the Yaheetech Folding Computer Desk.

- **Do not sit on the computer desk.** This desk is designed for holding computer equipment and work materials, not for seating.
- Ensure the total weight placed on the desk does not exceed the specified maximum load capacities to prevent damage or injury.
- Keep fingers away from moving parts, especially the metal tubes underneath, when folding or unfolding the table to avoid pinching.
- Place the desk on a stable, level surface to prevent tipping.



CAUTION:

Ensure fingers are kept away from the metal tubes underneath while folding the table to avoid pinching.

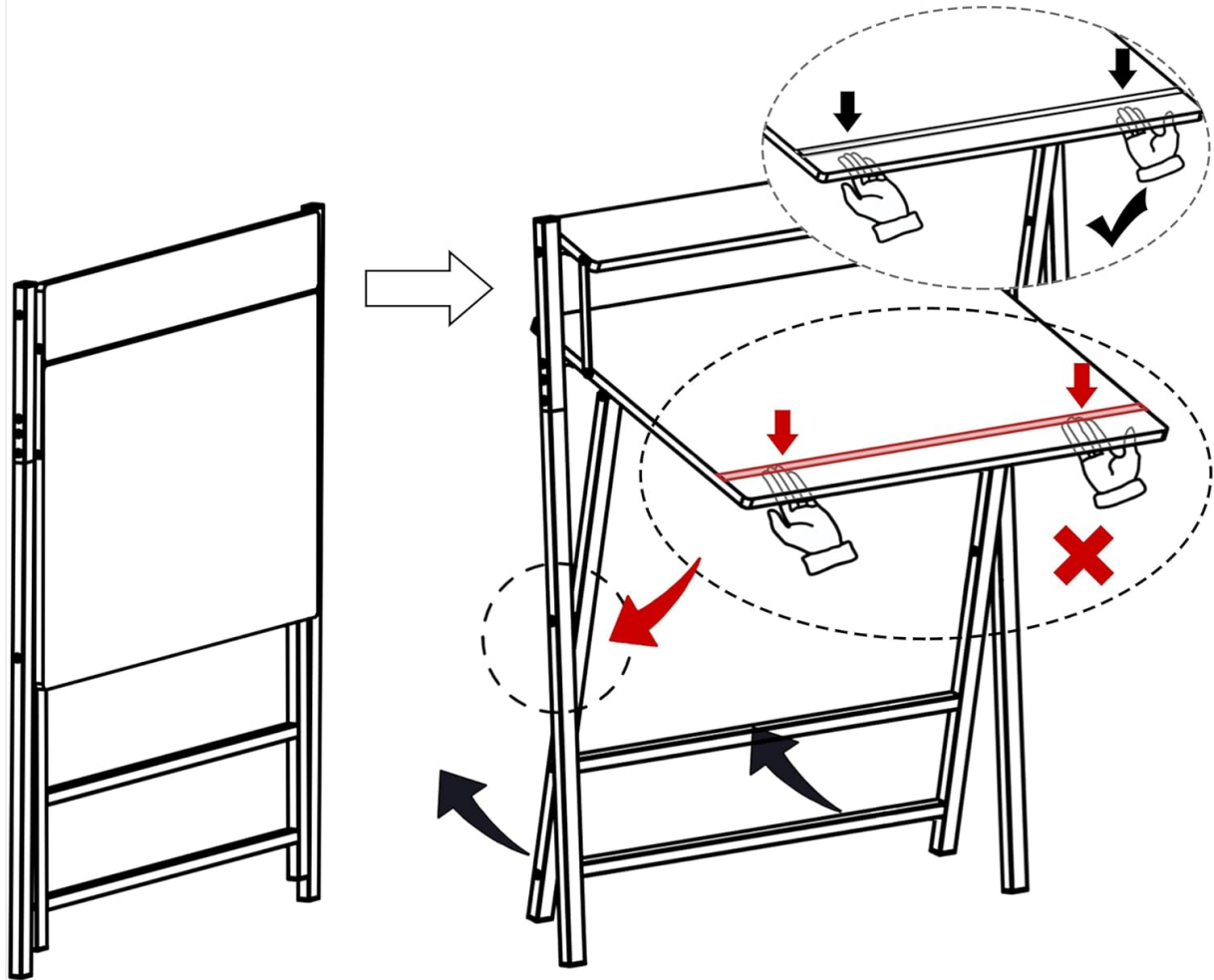


Figure 1.1: Folding Caution. This diagram illustrates the correct and incorrect hand placement when folding the desk to prevent finger pinching. Always ensure fingers are clear of the folding mechanism.

2. PRODUCT OVERVIEW

The Yaheetech 80 cm Folding Computer Desk is a versatile and space-saving solution for your home office, study room, or small living areas. It combines functionality with a modern design, featuring a sturdy construction and an ergonomic monitor shelf.

Key Features:

- **Ergonomic Monitor Shelf:** The elevated shelf positions your screen at an ergonomic height, reducing strain on your neck and back during extended use.
- **Stable X-Shaped Metal Frame:** Constructed with a reinforced X-shaped metal frame and additional crossbars, ensuring stability and supporting up to 60 kg.
- **Space-Saving Foldable Design:** Easily folds for compact storage, allowing it to be stored under a bed, behind a door, or in other small spaces when not in use.
- **Durable Materials:** Made from robust coated particleboard and powder-coated metal, offering a water-repellent surface that is easy to clean.
- **Rounded Corners:** Slightly rounded corners enhance safety and comfort during daily use.



Figure 2.1: Product in Use. The Yaheetech folding computer desk set up in a home office, showcasing its monitor shelf and compact design.



Monitor Stand

Provides more space and elevates the monitor to eye level

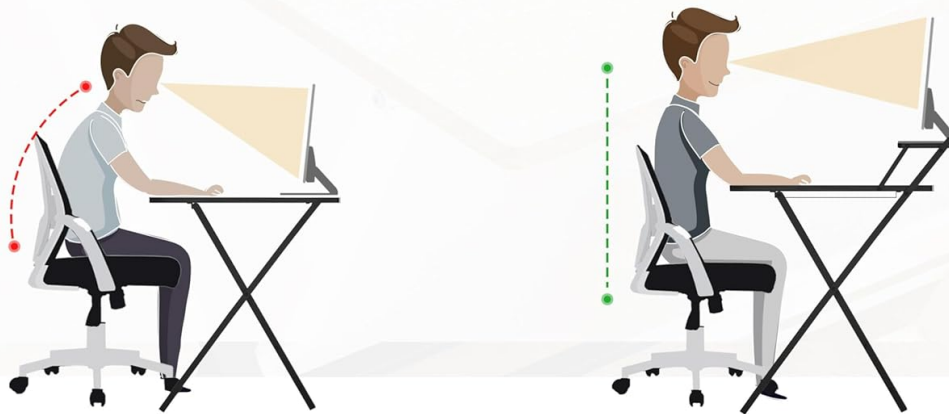


Figure 2.2: Monitor Stand Ergonomics. This image highlights how the integrated monitor stand helps maintain an ergonomic posture, reducing neck and back strain.



Figure 2.3: Stable X-Shaped Metal Frame. A detailed view of the desk's robust X-shaped metal frame, designed for strong and reliable support.

3. SPECIFICATIONS

Attribute	Value
Model Number	5016397
Color	Light Wood
Material	Particleboard, Powder-coated Metal
Unfolded Dimensions (L x W x H)	86.5 x 60.5 x 90.5 cm
Folded Dimensions (L x W x H)	107 x 86.5 x 4 cm
Tabletop Dimensions (L x W)	80 x 50 cm
Monitor Shelf Dimensions (L x W)	80 x 12 cm
Tabletop Height	74.5 cm

Attribute	Value
Maximum Load Capacity (Total)	60 kg
Maximum Load Capacity (Tabletop)	50 kg
Maximum Load Capacity (Shelf)	10 kg
Item Weight	9.7 kg



Figure 3.1: Desk Dimensions and Capacities. This image provides detailed measurements for both the unfolded and folded states of the desk, along with maximum weight capacities for the tabletop and monitor shelf.

4. SETUP AND ASSEMBLY

The Yaheetech Folding Computer Desk is designed for quick and easy setup. Minimal assembly is required, primarily involving unfolding the desk.

Unfolding the Desk:

1. Carefully remove the desk from its packaging.
2. Place the folded desk on a flat, clear surface.
3. Gently pull the main tabletop upwards while extending the X-shaped metal legs outwards.

4. Ensure all locking mechanisms (if present) are securely engaged to keep the desk stable.
5. Verify that the monitor shelf is properly aligned and stable.

Lightweight Table

Simply fold and store away when not in use



Figure 4.1: Unfolding the Desk. This image demonstrates the simple process of unfolding the desk from its compact storage position to its ready-to-use state.

5. OPERATION

Using the Desk:

- Place your computer, monitor, and other work essentials on the tabletop and monitor shelf.
- Utilize the monitor shelf to elevate your screen for improved ergonomics.
- The open design provides ample legroom for comfortable use.

Folding for Storage:

1. Clear all items from the desk surface and monitor shelf.
2. Carefully disengage any locking mechanisms that secure the desk in its open position.
3. Gently push the tabletop downwards while bringing the X-shaped legs together. Refer to Figure 1.1 for safe hand placement.
4. Once folded, the desk can be stored in a compact space.

Space-Saving Foldable Design

Folds easily to fit behind doors, under beds or sofas, or any other compact space



Figure 5.1: Space-Saving Storage. This image illustrates how the folded desk can be conveniently stored in various compact locations, such as behind a door, under a bed, or beside a sofa.

6. MAINTENANCE

To ensure the longevity and appearance of your Yaheetech Folding Computer Desk, follow these simple maintenance guidelines:

- **Cleaning:** The water-repellent surface can be easily cleaned with a damp cloth. Avoid using harsh chemicals or abrasive cleaners, which may damage the finish.
- **Inspection:** Periodically check all screws and connections to ensure they are tight. Retighten if necessary.
- **Storage:** When storing the desk in its folded position, ensure it is placed in a dry environment away from extreme temperatures or direct sunlight.

7. TROUBLESHOOTING

If you encounter any issues with your Yaheetech Folding Computer Desk, please refer to the following common solutions:

- **Desk feels unstable:** Ensure the desk is placed on a flat, level surface. Check that all legs are fully

extended and any locking mechanisms are engaged. Verify that all screws are tightened.

- **Difficulty folding/unfolding:** Ensure no obstructions are present in the folding mechanism. Apply gentle, even pressure. Refer to the safety information regarding hand placement.
- **Surface damage:** For minor scratches, touch-up pens or furniture markers matching the wood color may be used. For significant damage, contact customer support.

If the problem persists, please contact Yaheetech customer support for further assistance.

8. WARRANTY AND SUPPORT

Yaheetech products are manufactured to high-quality standards. For specific warranty details, please refer to the warranty card included with your purchase or visit the official Yaheetech website.

For customer support, technical assistance, or to inquire about replacement parts, please contact Yaheetech directly through their official website or the contact information provided in your purchase documentation.