

Manuals+

[Q & A](#) | [Deep Search](#) | [Upload](#)

[manuals.plus](#) /

› [EDISHINE](#) /

› [EDISHINE 100FT Smart RGB+IC+Warm White Permanent Outdoor Eave Lights PRO Instruction Manual](#)

EDISHINE C5110-A

EDISHINE 100FT Smart RGB+IC+Warm White Permanent Outdoor Eave Lights PRO Instruction Manual

Model: C5110-A

1. INTRODUCTION

This manual provides detailed instructions for the installation, operation, and maintenance of your EDISHINE 100FT Smart RGB+IC+Warm White Permanent Outdoor Eave Lights PRO. These lights feature advanced RGB+IC technology, allowing individual control of each LED for dynamic lighting effects, alongside a warm white option for ambient illumination. Designed for year-round outdoor use, they are durable and weather-resistant.

Decorate Your Christmas with EDISHINE Outdoor Lights

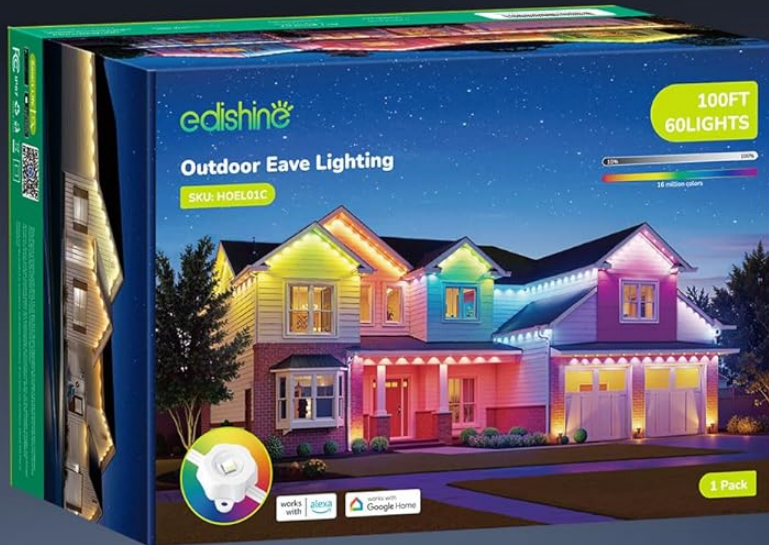


Image: A house decorated with EDISHINE permanent outdoor lights, displaying a festive Christmas scene with colorful lighting on the eaves and warm white lights on the porch. Snow covers the ground and trees.

2. WHAT'S IN THE BOX

Carefully unpack the contents and ensure all items are present. If any items are missing or damaged, please contact customer support.

What's in the Box



- 1 24.6 ft String Lights * 4
- 2 3m Extension Cable * 1
- 3 Y-Connector * 1
- 4 M20 Waterproof Connector (Male & Female)* 1
- 5 Control Box * 1
- 6 Power Adapter * 1
- 7 Remote Control * 1
- 8 Quick Start Guide * 1
- 9 Screw Pack * 2
- 10 10-3 * Tail Plug
- 11 Spare VHB Adhesive * 8



Image: A detailed view of all components included in the EDISHINE outdoor eave lighting kit. Items are neatly arranged on a wooden surface, showing the string lights, extension cables, Y-connector, waterproof connectors, control box, power adapter, remote control, quick start guide, screw packs, and spare VHB adhesive tapes.

- 24.6 ft String Lights x 4
- 3m Extension Cable x 1
- Y-Connector x 1
- M20 Waterproof Connector (Male & Female) x 1 pair
- Control Box x 1
- Power Adapter x 1

- Remote Control x 1
- Quick Start Guide x 1
- Screw Pack x 2 (40pcs each)
- 10-3 Tail Plug x 3
- Spare VHB Adhesive x 8

3. SPECIFICATIONS

Feature	Detail
Color	White (Housing), RGB+IC+Warm White (Light)
Material	Acrylonitrile Butadiene Styrene (ABS), Plastic
Light Source Type	LED
Power Source	Corded Electric
Voltage	120 Volts
Brightness	40 Lumens per lamp
Mounting Type	Eave Mount
Bulb Features	RGBW lighting, 111+ preset scene modes, remote control, App control, Alexa & Google Assistant voice control, music modes
Color Temperature	2700 Kelvin (Warm White)
Number of Light Sources	60
Product Dimensions	1.22"L x 1.22"W x 1.22"H (per light)
Item Weight	5.57 pounds
Model Number	C5110-A
Waterproof Rating	IP67 (for LED Christmas outdoor lights, control box and adapter)
Operating Temperature	-4°F to 113°F (-20°C to 45°C)

4. SETUP AND INSTALLATION

Follow these steps for proper installation of your EDISHINE outdoor eave lights. Ensure the surface is clean and dry before applying adhesive.

4.1 Surface Preparation

Before installation, clean the surface where the lights will be mounted with a cloth or tissue to ensure optimal

adhesion.

Your browser does not support the video tag.

Video: This video demonstrates the installation process for Edishine Eave Lights, including surface preparation and mounting. It shows a hand cleaning a surface with a blue cloth before attaching the lights.

4.2 Connecting Light Strings

Connect each light string segment. Secure the waterproof caps for each connection and at the end of the last light string to maintain IP67 rating.

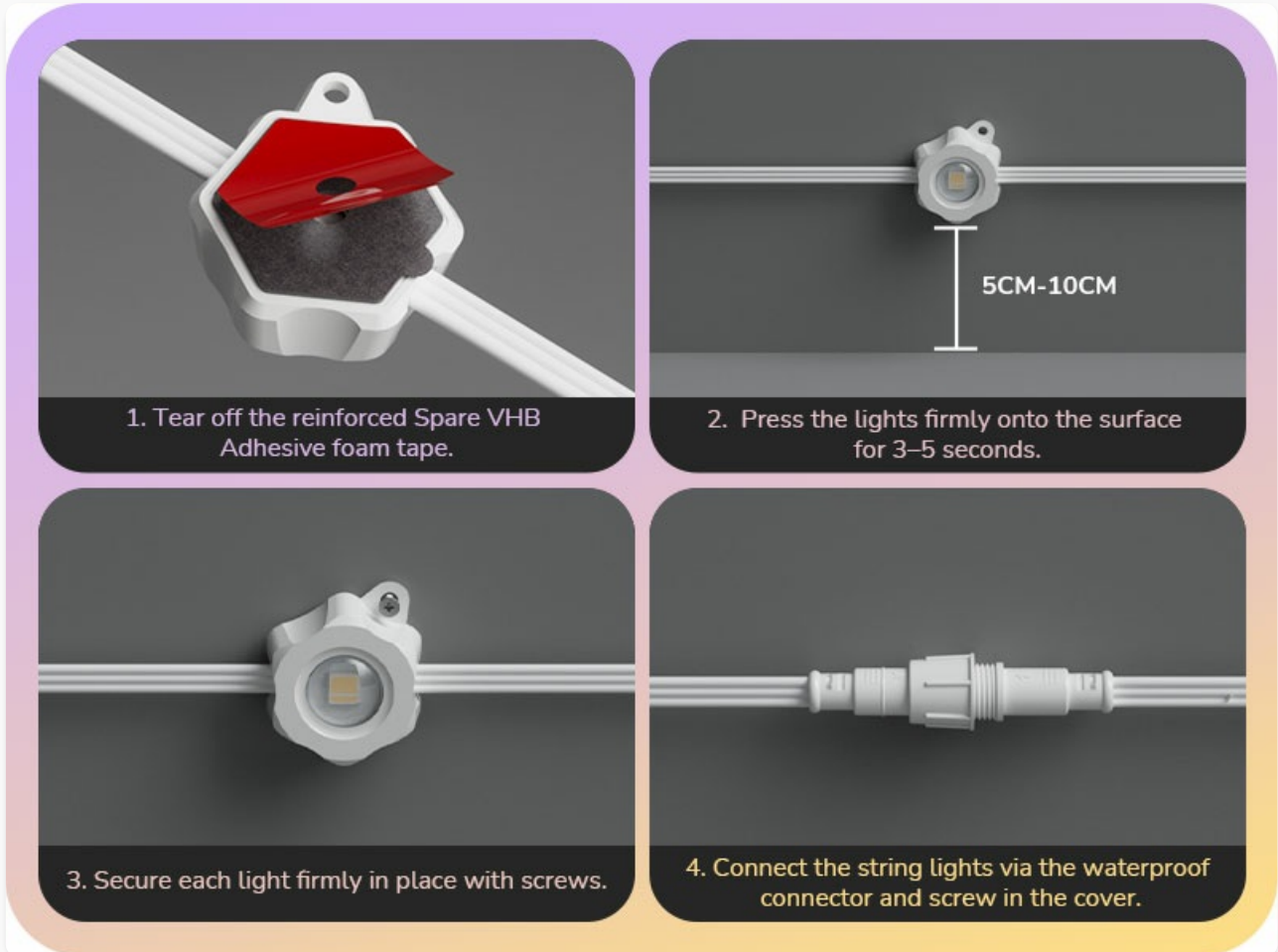


Image: A four-panel diagram illustrating the installation steps: 1. Tearing off the reinforced VHB adhesive foam tape. 2. Pressing the lights firmly onto the surface for 3-5 seconds. 3. Securing each light firmly in place with screws. 4. Connecting the string lights via the waterproof connector and screwing in the cover.

4.3 Mounting the Lights

The lights can be mounted using the pre-applied adhesive tape and further secured with screws for long-term durability. Attach the screw in the pre-drilled holes to each strand.

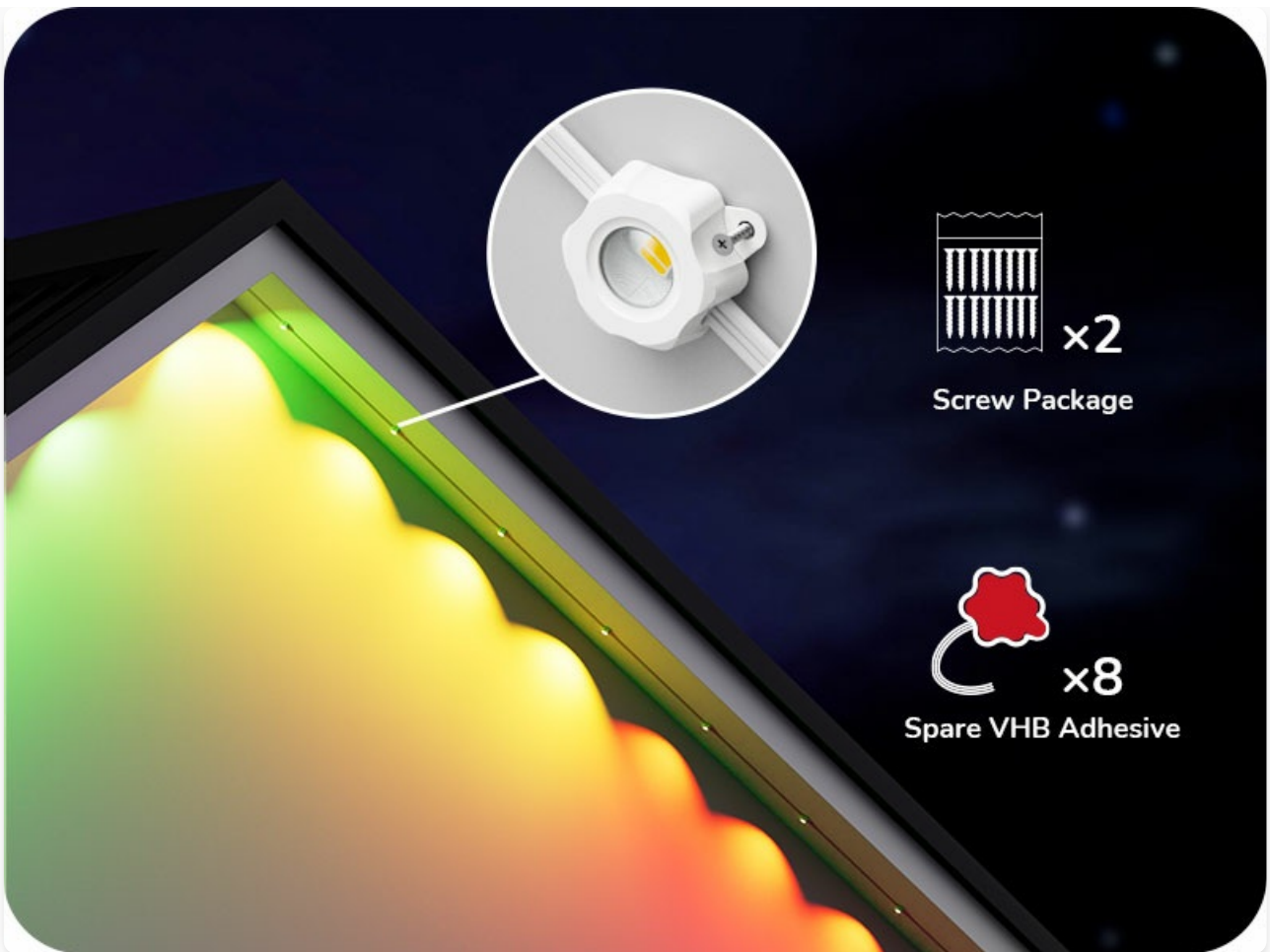


Image: A close-up view of an individual light unit from the EDISHINE string lights, showing the red double-sided adhesive tape on its back and a screw being used to secure it to a surface. The image also highlights the inclusion of screw packages and spare VHB adhesive.

4.4 Using Extension Cables and Y-Connectors

Utilize the provided extension cables and Y-connectors to customize the length and branching of your light setup, especially for complex rooflines. Ensure all connections are waterproofed.

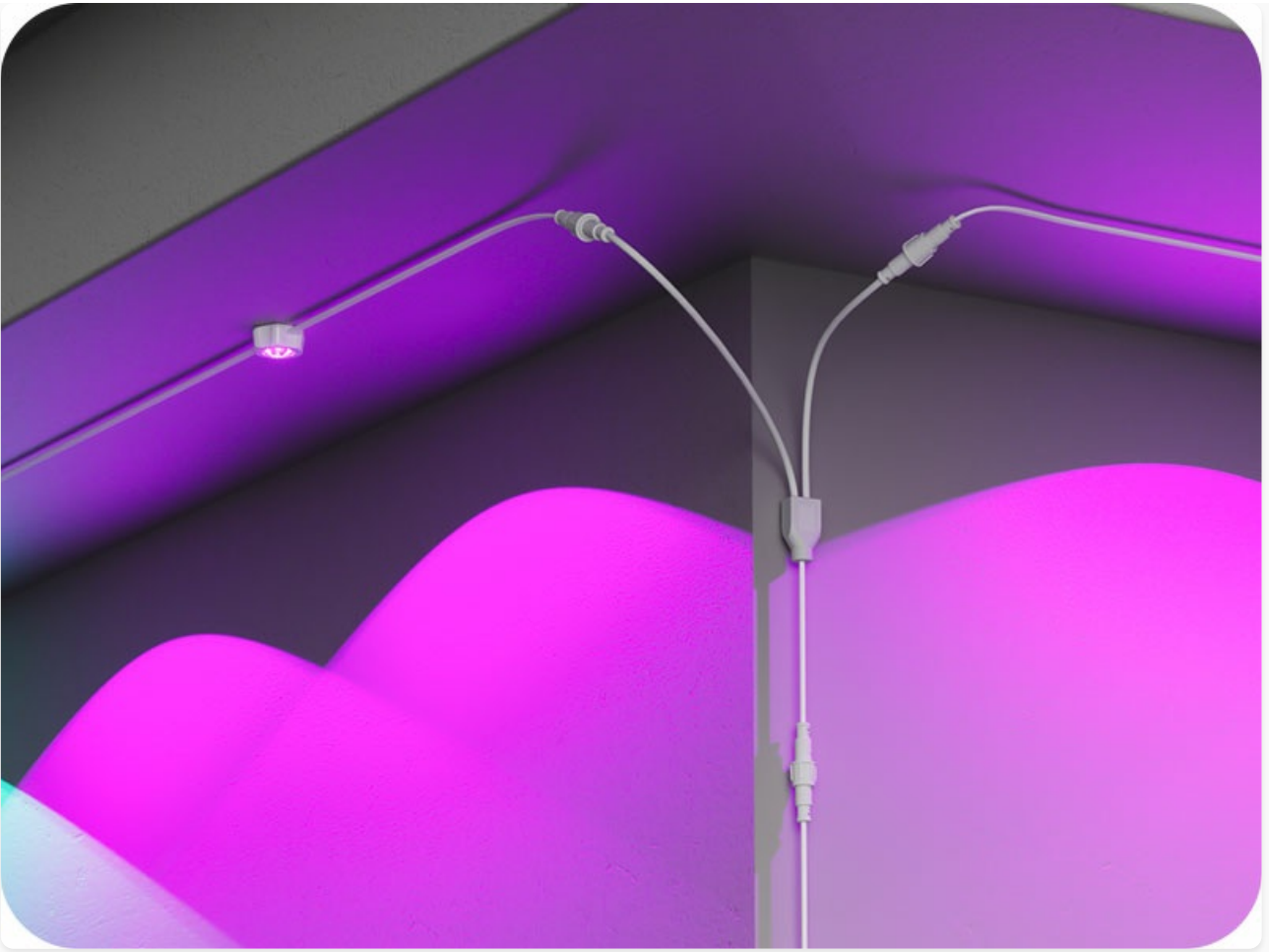


Image: An illustration demonstrating the use of a Y-shaped cable to branch the light string, allowing for flexible installation around corners or different sections of a house eave. The lights are shown casting purple illumination.

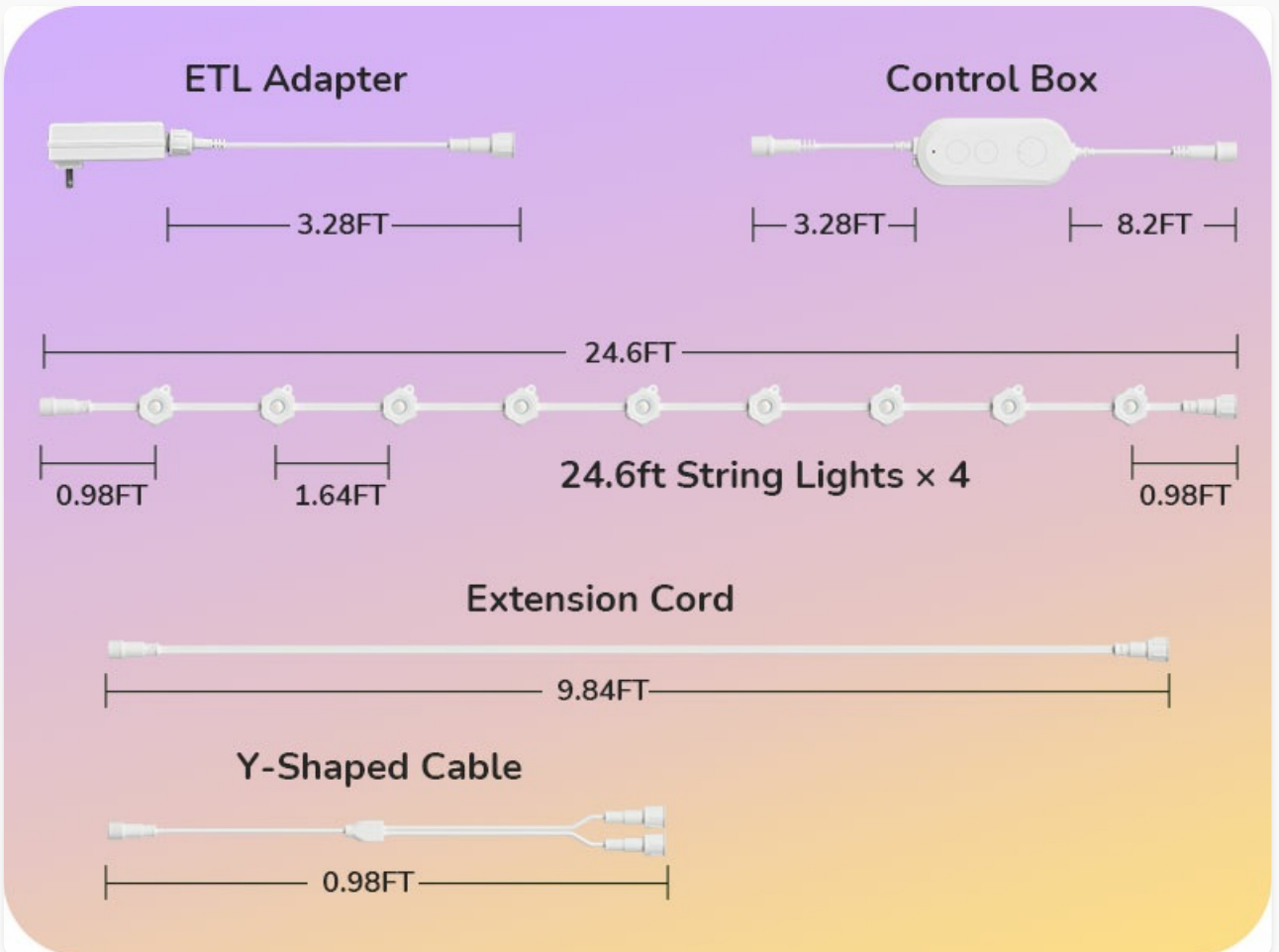


Image: A diagram detailing the lengths of various components: four 24.6 ft string lights, a 9.84 ft extension cord, a 0.98 ft Y-shaped cable, a 3.28 ft ETL adapter, and a control box with an 8.2 ft cable. This helps in planning the layout.

4.5 Cutting and Splicing Wires (Advanced)

For custom lengths, the permanent eave lights can be trimmed and reconnected. Follow the instructions carefully to ensure waterproof integrity and proper electrical connection.

Your browser does not support the video tag.

Video: This video provides a step-by-step guide on how to cut and splice the wires of the Edishine lights. It demonstrates stripping the outer cover, exposing the copper wires, and correctly inserting them into the waterproof connector for a secure and functional connection.

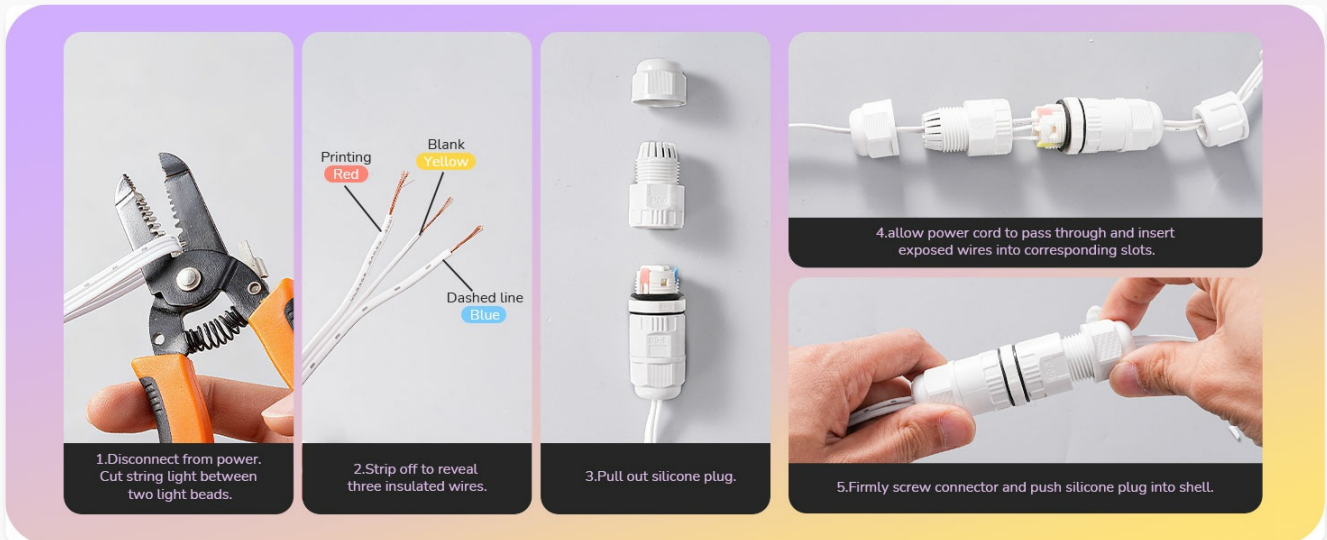


Image: A diagram illustrating the process of cutting and splicing the light string. It shows how to cut the full light string into two sections and then use M20 female or male connectors depending on whether the cut end is kept as a male or female connector, ensuring proper re-connection and waterproofing.

5. OPERATING INSTRUCTIONS

Your EDISHINE lights offer multiple control methods for convenience and versatility.

5.1 Smart Life App Control

Download the Smart Life App to unlock the full potential of your lights, including individual bulb control, custom colors, brightness adjustment, 111+ preset scenes, music sync modes, and scheduling.

Your browser does not support the video tag.

Video: This video demonstrates how to pair the string lights with the Smart Life app. It shows the process of downloading the app, adding a device, and connecting to the lights via Wi-Fi and Bluetooth. It also highlights features like individual light control, dimming, and various pre-set scene modes and music rhythm modes.

1. Ensure your phone, speaker, and devices are on the same 2.4GHz Wi-Fi network (5GHz is not supported).
2. Download the Smart Life App by scanning the QR code in the Quick Start Guide or searching in your app store.
3. Press and hold the controller on the light string for more than 5 seconds until the red light flashes to enter pairing mode.
4. Open the Smart Life App, tap "Add Device" (+ icon), and allow necessary permissions (Local Network, Bluetooth, Home Data).
5. The app will search for nearby devices. Select your device (e.g., C5110) and enter your Wi-Fi password.

- Once connected, you can control individual lights, adjust brightness (1%-100% dimmable), select from 111+ pre-scene modes (Mood, Festival, Life, Scenery), and activate Music Rhythm Mode.
- Set countdowns and timers for automated operation.

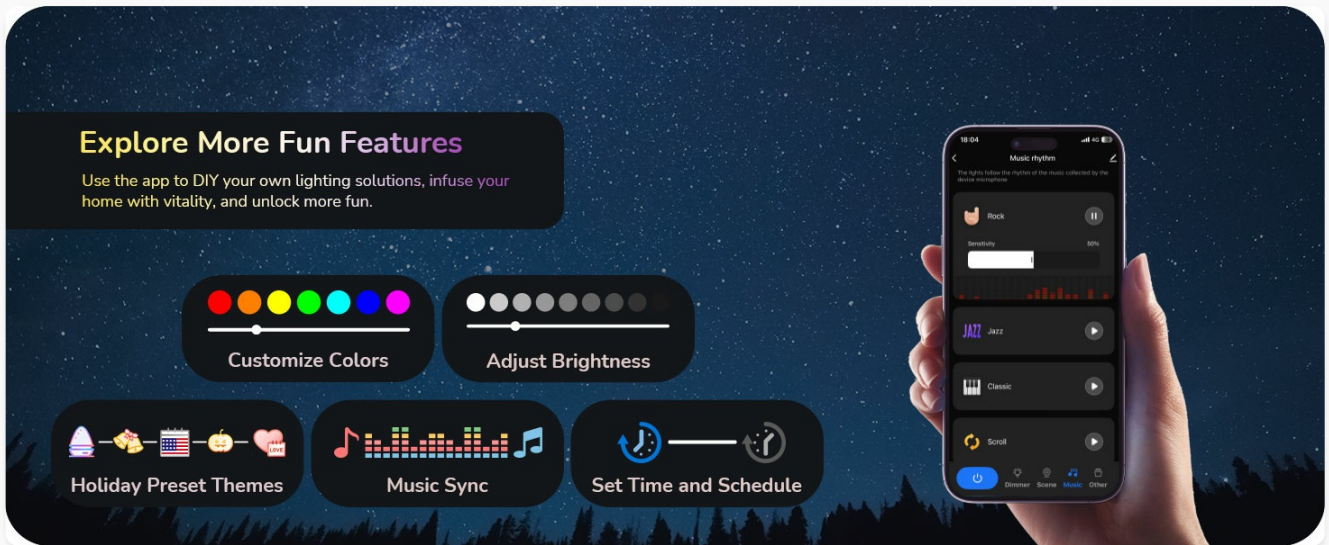


Image: A smartphone displaying the Smart Life app interface, highlighting various control features such as customizing colors, adjusting brightness, selecting holiday-themed presets, music synchronization, and setting timers and schedules for the lights.

5.2 Remote Control

The included remote control provides basic lighting functions and fixed modes for quick adjustments without the app.

5.3 Voice Control

Integrate your lights with Alexa and Google Assistant for convenient voice control. Follow the instructions in the Smart Life App to connect with your preferred voice assistant.

More Control Options

Freely choose and customize the operation method that suits you best.



works with
Smart Life APP

works with



works with
Hey Google



App



Voice Control



Remote



Control Box

Image: A visual representation of the various control methods available for the EDISHINE outdoor lights. It shows icons for the Smart Life App, Alexa, Google Assistant, a physical remote control, and the inline control box, indicating flexible operation options.

6. MAINTENANCE

These lights are designed for year-round durability with an IP67 waterproof rating for the LEDs, control box, and adapter. The anti-UV material withstands wind, rain, and snow, operating in temperatures from -4°F to 113°F (-20°C to 45°C).

All-Weather Design



Dustproof



UV-resistant



-4°F-140°F



50,000 Hours

IP67



Image: A house with colorful EDISHINE lights installed on its eaves, shown during a rainstorm. Icons indicate dustproof, UV-resistant, wide temperature range (-4°F to 140°F), 50,000 hours lifespan, and IP67 waterproof rating for the lights and control box. To clean the lights, gently wipe them with a soft, damp cloth. Avoid using harsh chemicals or abrasive materials that could damage the lights or their waterproof seals.

7. TROUBLESHOOTING

- **Lights not turning on:** Ensure all connections are secure and the power adapter is properly plugged into a working outlet. Check if the control box indicator light is on.

- **Lights not responding to app/remote:** Verify that the lights are in pairing mode (red light flashing on controller) and that your device is connected to a 2.4GHz Wi-Fi network. For remote control, ensure there are no obstructions and the remote's battery is functional.
- **Inconsistent color or flickering:** Check all physical connections for looseness. If using spliced wires, ensure they are correctly inserted into the waterproof connectors according to the wiring sequence (Red, Yellow, Blue).
- **App cannot find device:** Make sure Bluetooth is enabled on your phone during the initial connection process. Ensure the lights are in pairing mode.

8. WARRANTY AND SUPPORT

For warranty information or technical support, please refer to the Quick Start Guide included in your package or visit the official EDISHINE website. You can also contact EDISHINE customer service directly for assistance with any product-related inquiries.
