



Manuals.plus /

- › TERRAMASTER /
- › TERRAMASTER F2-425 2-Bay NAS Instruction Manual

TERRAMASTER F2-425

TERRAMASTER F2-425 2-Bay NAS Instruction Manual

Model: F2-425 | Brand: TERRAMASTER

1. PRODUCT OVERVIEW

The TERRAMASTER F2-425 is a 2-bay Network Attached Storage (NAS) device designed for home users. It features an Intel x86 quad-core CPU and 4GB of RAM, providing robust performance for various tasks including 4K transcoding and multi-user access. Equipped with 2.5GbE LAN, it ensures high-speed data transfers. This NAS functions as a multimedia server, supporting popular applications like Plex, Emby, and Jellyfin, and offers advanced data management and security features.

x86 Power, ARM Budget

F2-425 The Ultimate Home NAS

CPU

Intel

Quad-Core

GPU

UHD

Graphics

RAM

4GB

Sodimm

RJ45

2.5GbE

Port



Figure 1: TERRAMASTER F2-425 NAS highlighting its Intel Quad-Core CPU, UHD Graphics, 4GB RAM, and 2.5GbE LAN port.

2. KEY FEATURES

- **Powerful Performance:** Intel x86 quad-core CPU and 4GB RAM for 4K transcoding and multitasking.
- **Ultra-Fast Connectivity:** 2.5GbE LAN port for rapid file transfers and multi-user concurrent access.
- **Home Multimedia Hub:** Hardware-level 4K H.265 decoding, compatible with Plex, Emby, and Jellyfin for smooth HD video playback, and DLNA for multi-device streaming.

- **AI-Powered Photo Management:** Photos app with AI smart album features for efficient organization of millions of photos.
- **TNAS Mobile Control:** Initialize setup and manage your NAS via the TNAS Mobile app, supporting automatic photo/video backups and real-time synchronization.
- **Quiet Operation:** Operates at just 19dB(A), suitable for noise-sensitive environments.
- **Tool-Free Installation:** Push-Lock design HDD trays allow for hard drive installation in approximately 10 seconds.
- **Massive Storage & Security:** Supports up to 60TB storage (2 x 30TB bays), 50+ independent user accounts, flexible RAID arrays for data redundancy, SPC security module, and CloudSync for data protection.

3. SETUP GUIDE

3.1 Hardware Installation

The F2-425 features a tool-free Push-Lock design for easy hard drive installation.

1. Gently press the release button on the HDD tray to unlock it.
2. Pull the tray out from the NAS enclosure.
3. Mount your 3.5-inch hard drive into the tray. The Push-Lock design secures the drive without the need for screws.
4. Slide the loaded tray back into the NAS until it clicks securely into place.

Push-Lock HDD Tray

Insertion Activates Lock,
Streamlining Hard Drive Installation.



Figure 2: Tool-free hard drive installation using the Push-Lock tray.

100% Tool-Free to Install HDDs

Install or Remove a Hard Drive in Just 10 Seconds
without the Need for Any Tools.

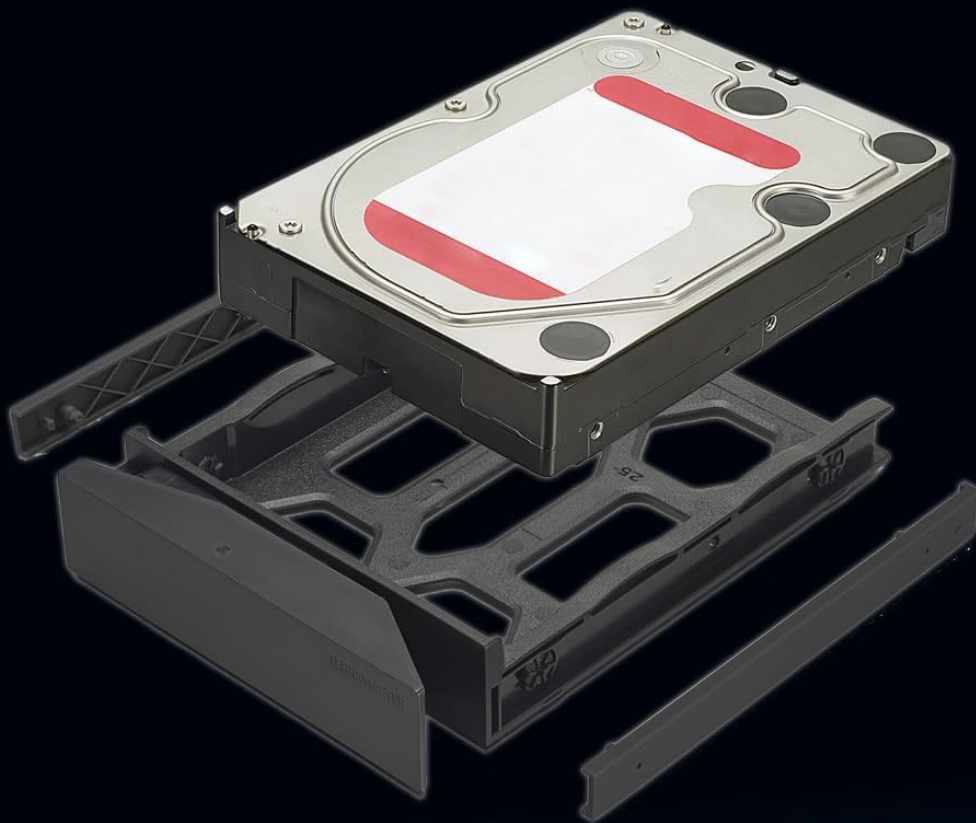


Figure 3: Step-by-step guide for 100% tool-free HDD installation.

3.2 Initial Software Setup

The TERRAMASTER F2-425 utilizes the TOS 6 operating system, which can be set up and managed via the TNAS Mobile app.

1. Connect the NAS to your network via the 2.5GbE LAN port and power it on.
2. Download and install the TNAS Mobile app on your smartphone or tablet.
3. Follow the in-app instructions to discover your F2-425 NAS and complete the initial setup, including creating

user accounts and configuring storage arrays (e.g., TRAIID).

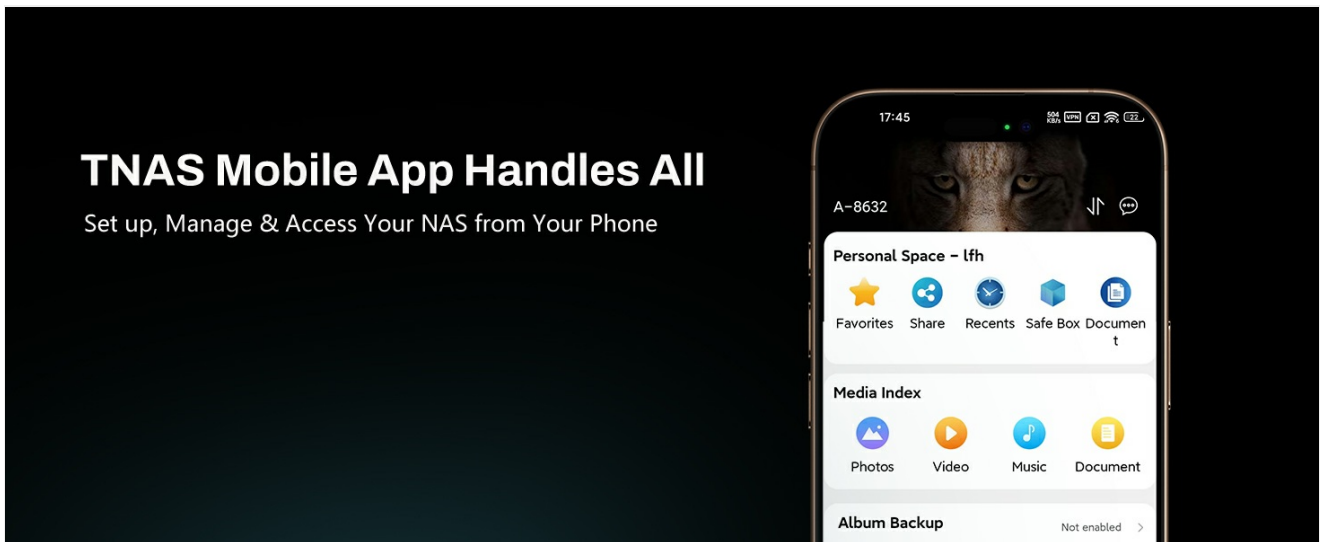


Figure 4: TNAS Mobile App interface for managing your NAS from a smartphone.

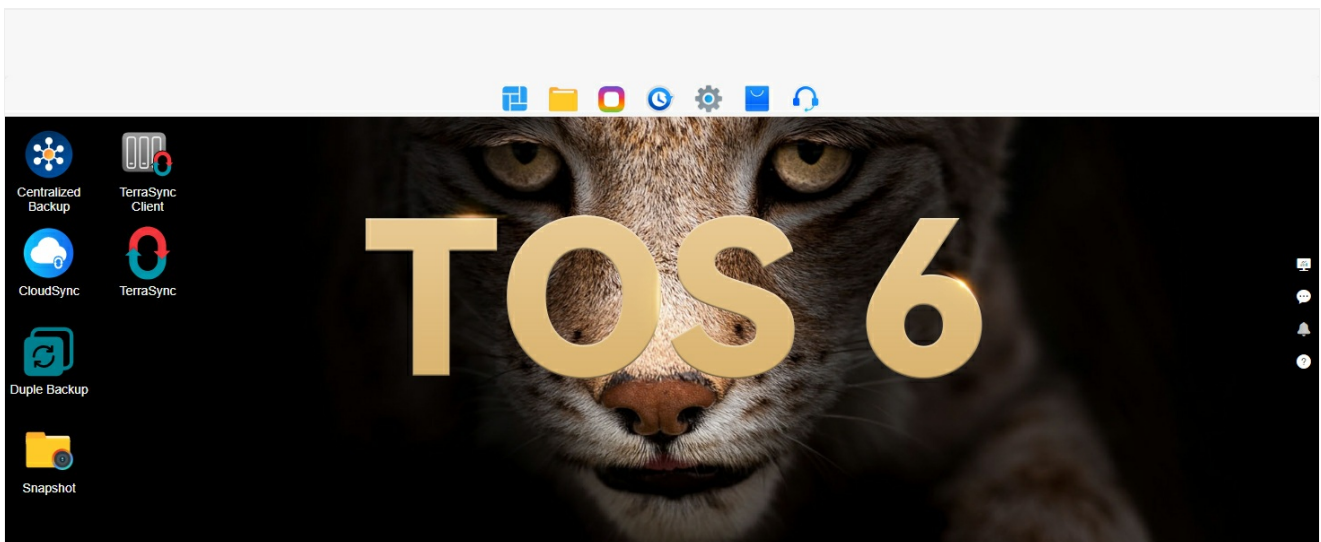


Figure 5: Overview of the TOS 6 operating system desktop interface.

4. OPERATING INSTRUCTIONS

4.1 Multimedia Server

The F2-425 excels as a multimedia server, supporting 4K video decoding and integration with popular media platforms.

- Install Plex, Emby, or Jellyfin from the TOS App Center to stream your media library.
- Utilize DLNA for seamless streaming to compatible devices on your network.
- The Photos app features AI capabilities to automatically organize your images into smart albums.

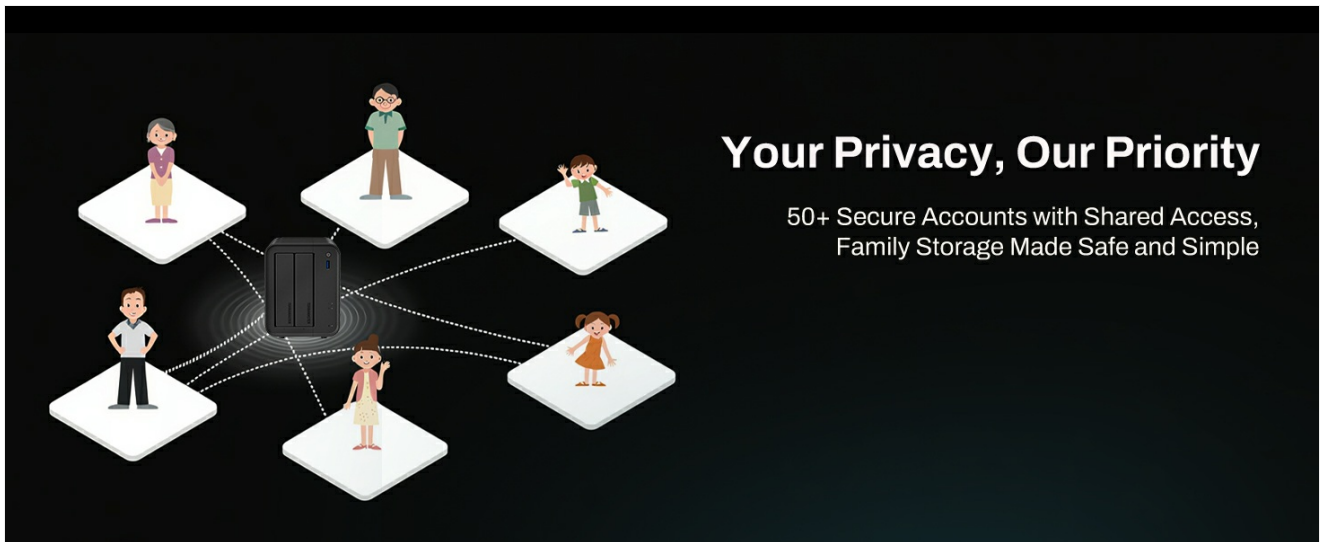


Figure 6: The F2-425 supports hardware-accelerated 4K video decoding for lag-free streaming.

Figure 7: The F2-425 functions as a multimedia server, supporting Plex, Emby, and Jellyfin.

4.2 Data Management and Synchronization

Manage your data efficiently with built-in backup and synchronization tools.

- **TerraSync:** Establish two-way synchronization between your F2-425 and PCs/Macs for real-time updates and version history.
- **CloudSync:** Integrate with cloud storage services like Google Drive, OneDrive, and Dropbox for off-site backups and data redundancy.
- **TRAIID Arrays:** Utilize flexible TRAIID arrays to optimize storage space and ensure data redundancy, protecting against drive failure.

Improved Structure

Great Heat Dissipation, Super Quiet



Figure 8: TerraSync enables two-way data synchronization between your NAS and other devices.

4.3 User Accounts and Security

The F2-425 supports multiple user accounts and robust security features.

- Create over 50 independent user accounts with shared access controls for family members or small teams.
- The SPC security module and TOS Multi-Shield Defense System actively protect against ransomware, hackers, and unauthorized access.

Tool-Free to install 3.5" HDDs



Figure 9: Secure user accounts and shared access ensure data privacy.

Effortless Tray Sliding

Adopting TerraMaster's Unique Push-Lock Design,
Enjoy the Smoothness of Sliding Trays into the Shell.



Figure 10: The TOS Multi-Shield Defense System provides robust security for your data.

5. MAINTENANCE

5.1 Quiet Operation

The F2-425 is engineered for quiet operation, producing only 19dB(A) of noise, making it suitable for home environments.

Whisper-Quiet 2Bay NAS

Engineered for 50% Less Noise

19dB(A)



Figure 11: The F2-425 NAS operates at a whisper-quiet 19dB(A).

5.2 Cooling System

The device incorporates smart fan and vent designs to enhance airflow, ensuring optimal operating temperatures and extending the lifespan of your hard drives.

Cooling Innovation

Smart Fan and Vents Enhance Airflow,
Extending Lifespan.



Figure 12: Smart fan and vents provide efficient cooling for extended device lifespan.

6. TROUBLESHOOTING

If you encounter issues with your TERRAMASTER F2-425, consider the following general troubleshooting steps:

- **Connectivity Issues:** Ensure all network cables are securely connected and your router is functioning correctly. Verify the NAS has a valid IP address.
- **Drive Recognition:** If a hard drive is not recognized, ensure it is properly seated in its tray and the tray is fully

inserted into the bay. Check the drive's health status via the TOS interface.

- **Performance Problems:** High CPU or RAM usage can affect performance. Check the resource monitor in TOS. Ensure your network infrastructure (router, cables) supports 2.5GbE speeds.
- **Software Access:** If you cannot access the TOS interface or TNAS Mobile app, try restarting the NAS and your network devices. Ensure the app is updated to the latest version.
- **Data Loss Concerns:** Always maintain regular backups using TRAIID, CloudSync, or external drives to prevent data loss.

7. SPECIFICATIONS

Feature	Detail
Model	F2-425
Processor	Intel x86 Quad-Core CPU
RAM	4GB
LAN Ports	2.5GbE
Drive Bays	2
Max Storage Capacity	60TB (2 x 30TB)
Product Dimensions	8.74 x 4.69 x 6.06 inches
Item Weight	2.86 pounds
Color	Black
Material	Plastic

8. WARRANTY AND SUPPORT

The TERRAMASTER F2-425 typically comes with a 2-year limited warranty. For detailed warranty information, technical support, or service requests, please visit the official TERRAMASTER website or contact their customer support directly. Ensure you have your product model number and purchase date available when seeking support.

9. PRODUCT VIDEOS

TERRAMASTER F2-425 2-Bay NAS Server Overview

Your browser does not support the video tag.

This video provides a comprehensive overview of the TERRAMASTER F2-425 2-Bay NAS Server, highlighting its features and capabilities for home users.

TERRAMASTER F2-425 Plus 2-Bay NAS Overview

Your browser does not support the video tag.

This video showcases the features of the TERRAMASTER F2-425 Plus, a similar 2-bay NAS model, demonstrating its performance

and functionalities.