

Tenda BE5010

Tenda BE5010 i36 WiFi 7 Wireless Access Point User Manual

1. INTRODUCTION

This manual provides comprehensive instructions for the installation, operation, and maintenance of your Tenda BE5010 i36 WiFi 7 Wireless Access Point. The BE5010 i36 is designed to deliver high-speed, stable wireless connectivity for business environments, featuring next-generation Wi-Fi 7 performance, 2.5G PoE+ uplink, seamless roaming, and flexible management options.

Advanced Functions



Figure 1: Tenda BE5010 i36 Wi-Fi 7 Wireless Access Point

2. PACKAGE CONTENTS

Verify that all items listed below are included in your package. If any item is missing or damaged, please contact your vendor or Tenda support.

- Tenda BE5010 i36 Access Point
- Power Adapter
- Mounting Bracket
- Mounting Screw Kit
- PoE Injector (if included with your model)
- User Guide

Seamless Fast Roaming with Zero Connection Drops

i36 supports 802.11k/v/r roaming protocols, enabling your devices to automatically connect to the access point with the strongest signal as you move across rooms or floors.

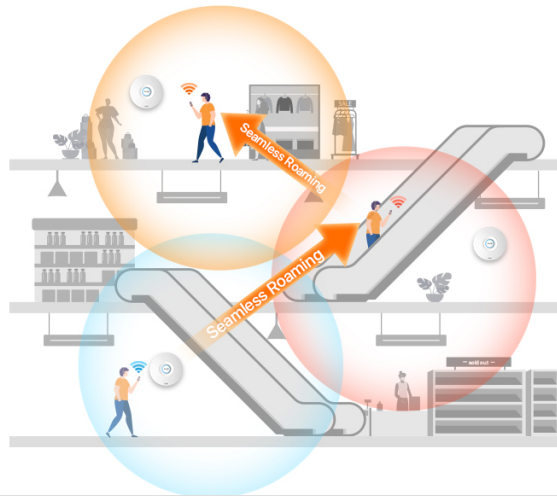


Figure 2: Package Contents of the Tenda BE5010 i36

3. PRODUCT OVERVIEW

3.1 Key Features

- **Next-Gen Wi-Fi 7 Performance:** Dual-band speeds up to 5010 Mbps with 4096-QAM, 160 MHz bandwidth, and MU-MIMO technology for ultra-fast, stable wireless connectivity.
- **High-Speed 2.5G PoE+ Uplink:** Features one 2.5G PoE+ port and one Gigabit port, delivering both power and data through a single cable for flexible and efficient deployment.
- **Seamless Roaming:** Supports 802.11k/v/r fast roaming, allowing devices to automatically switch to the strongest signal without interruption.
- **Cloud & Local Management:** Easy configuration via CloudFi app, web dashboard, or local web interface for monitoring and management.
- **Enterprise-Grade Security:** Safeguard your network with WPA3 encryption and VLAN tagging for network segmentation.



Figure 3: Advanced Functions of the Tenda BE5010 i36

3.2 Physical Description

The Tenda BE5010 i36 features a minimalist circular design suitable for ceiling or wall mounting. It includes essential ports for network connectivity and power.

- **Dimensions:** Approximately 250.6 mm diameter, 55 mm height.

- **Ports:** One Reset button, one LAN1 Gigabit port, and one LAN0/PoE+ 2.5G port.



Manage APs Anytime, Anywhere with CloudFi App

Stay in control wherever you go. The CloudFi App offers real-time network monitoring, device health checks, and wireless optimization — all from your smartphone.



Figure 4: Bottom View with Ports and Dimensions

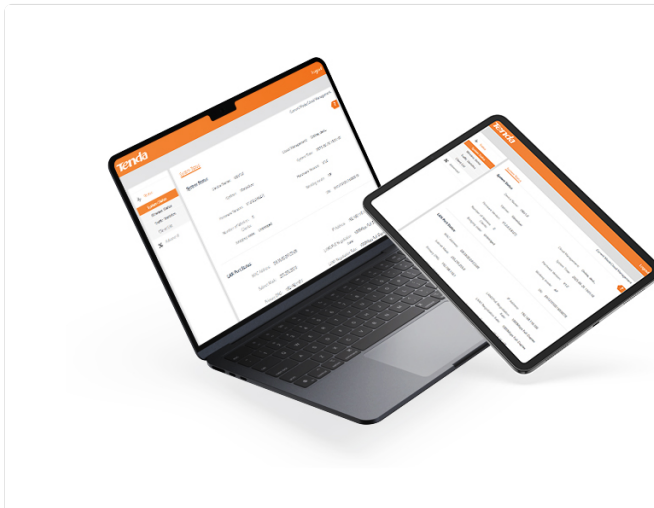
4. SETUP

4.1 Mounting Options

The BE5010 i36 supports both ceiling and wall mounting. Choose the option that best suits your environment for optimal Wi-Fi coverage.

- **Ceiling Mounting:** Ideal for central placement to maximize signal distribution in open areas.
- **Wall Mounting:** Suitable for corridors or specific areas requiring focused coverage.

The tool-free bracket structure allows for easy mounting; simply snap and twist to lock the device into place.



Professional Cloud Control via Web Dashboard

Tenda's CloudFi cloud platform allows you to visualize your entire AP network through a dynamic topology view. Easily deploy, configure, reboot, or diagnose multiple devices from a single dashboard.

Figure 5: Flexible Installation Options

4.2 Power and Data Connection (PoE+)

The BE5010 i36 supports 802.3at PoE+, allowing it to receive both power and data through a single Ethernet cable connected to the LAN0/PoE+ port. This simplifies deployment, especially for ceiling-mounted installations.

1. Connect an Ethernet cable from a PoE+ switch or PoE injector to the LAN0/PoE+ port on the access point.

2. If not using PoE+, connect the included power adapter to the DC power input and an Ethernet cable from your network to the LAN1 port.

5. OPERATING INSTRUCTIONS

5.1 Initial Configuration

The Tenda BE5010 i36 can be configured via a local web interface or the CloudFi app.

- **Local Web Interface:** Connect a Wi-Fi enabled device to one of the access point's default SSIDs. Open a web browser and navigate to <http://tendawifi.com> to access the local management interface.
- **CloudFi App:** Download the CloudFi app from your smartphone's app store. Follow the in-app instructions to add and configure your access point for cloud management.

Local Management

Connect your Wi-Fi-enabled device to one of your wireless AP's SSIDs and then enter <http://tendawifi.com> in the address bar of a web browser to access the local web interface. Ideal for customers who don't need cloud management.

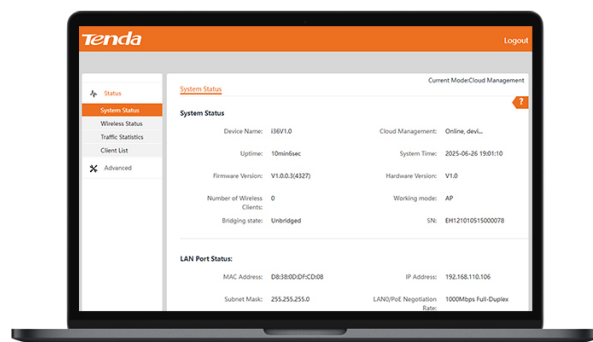


Figure 6: Management Interfaces (Web UI and CloudFi App)

5.2 Seamless Roaming

The BE5010 i36 supports 802.11k/v/r fast roaming protocols. This feature allows your wireless devices to automatically connect to the access point with the strongest signal as you move across rooms or floors, ensuring a continuous and stable connection without noticeable interruptions.

Standard PoE+ for Easy and Flexible Deployment

i36 supports 802.3at PoE+ and can be powered by a PoE+ switch or a PoE+ injector. A single Ethernet cable provides both power and data, enabling flexible ceiling-mounted deployments.



Figure 7: Seamless Roaming in Action

6. MAINTENANCE

Regular maintenance helps ensure the optimal performance and longevity of your access point.

- **Firmware Updates:** Periodically check the Tenda website or CloudFi app for firmware updates. Keeping your device's firmware up-to-date ensures access to the latest features, security patches, and performance improvements.
- **Cleaning:** Gently clean the exterior of the access point with a soft, dry cloth. Avoid using liquid cleaners or aerosols.
- **Environmental Conditions:** Ensure the access point is operated within its specified temperature and humidity ranges to prevent damage.

7. TROUBLESHOOTING

If you encounter issues with your Tenda BE5010 i36, refer to the following common troubleshooting steps:

- **No Power:** Verify that the power adapter is securely connected to the access point and a working power outlet, or that the PoE+ connection is active and providing power.
- **No Internet Access:** Check the connection between the access point and your router/modem. Ensure your router has an active internet connection.
- **Weak Wi-Fi Signal:** Reposition the access point to a more central location, away from obstructions and interference sources. Ensure the mounting is secure.
- **Cannot Access Web Interface:** Ensure your device is connected to the access point's Wi-Fi network or directly via Ethernet. Try clearing your browser's cache or using a different browser.
- **Device Reset:** If issues persist, locate the reset button (refer to Figure 4) and press and hold it for approximately 10 seconds to restore factory default settings.

8. SPECIFICATIONS

Feature	Description
Brand	Tenda
Model	I36 BE5010
Wireless Standard	802.11be (Wi-Fi 7), 802.11ax (Wi-Fi 6)
Data Transfer Rate	Up to 5010 Mbps (2.4 GHz + 5 GHz)
Frequency Band Class	Dual-Band (2.4 GHz, 5 GHz)
Ethernet Ports	1x 2.5G PoE+ Port, 1x Gigabit Port
PoE Support	802.3at PoE+
Security	WPA3, VLAN Tagging
Management	CloudFi App, Web Dashboard, Local Web Interface
Mounting	Ceiling Mount, Wall Mount
Dimensions	32 x 29.51 x 11.43 cm (Parcel Dimensions)

9. WARRANTY AND SUPPORT

For warranty information, please refer to the warranty card included with your product or visit the official Tenda website. Tenda offers a return policy of 30 days from the date of purchase for eligible products. For technical support, product inquiries, or to report issues, please contact Tenda customer service through their official website or the contact information provided in your product packaging.