

BoxWave ClearTouch Crystal ToughShield 9H

BoxWave ClearTouch Crystal ToughShield 9H Screen Protector User Manual

For Blaupunkt New Jersey NJ8820

1. INTRODUCTION

This manual provides detailed instructions for the installation, use, and maintenance of your BoxWave ClearTouch Crystal ToughShield 9H Screen Protector. Designed specifically for the Blaupunkt New Jersey NJ8820, this protector offers advanced defense for your device's screen.

2. PRODUCT FEATURES

The BoxWave ClearTouch Crystal ToughShield 9H Screen Protector is engineered with several key features to enhance your device's durability and display quality:

- **9H Hardness Rating:** Provides robust protection against scratches, impacts, and daily wear, comparable to tempered glass without the risk of chipping.
- **Crystal Clear Visibility:** Offers 99% transparency, ensuring your screen's original colors and brightness are maintained without distortion.
- **Glass-Like Surface:** Delivers a smooth touch experience, preserving the original feel and responsiveness of your device's screen.
- **Precision Cut:** Custom-designed to perfectly fit the dimensions, contours, and cut-outs of the Blaupunkt New Jersey NJ8820, ensuring full functionality.
- **Flexible Material:** Unlike rigid glass protectors, its flexible composition prevents cracking and shattering upon impact.
- **Two-Pack:** Each package includes two screen protectors and necessary installation accessories.



ClearTouch® CRYSTAL ToughShield 9H



COLOR BRILLIANCE

High-quality optical film that optimizes color rendition.



CLARITY

Your vibrant screens don't deserve blur or bland. 99% transparency means perfect clarity. No loss of color. No loss of resolution.



PRECISION

Precision cut. Precision Accuracy. Cut exactly for your device for increased touchpad accuracy and recognition.



REUSABILITY

ClearTouch® comes equipped with installation forgiveness. Reuse and reinstall as needed.



Image: BoxWave ClearTouch Crystal ToughShield 9H packaging highlighting key features.



9H Hardness Rating

Strong as glass without chipping or cracking



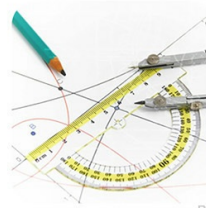
99% Transparency

True to life clarity and transparency



Two ClearTouches

Included in each package



Precisely Manufactured

Fits your device perfectly

BoxWave ClearTouch Crystal ToughShield 9H Screen Protector

Image: Infographic illustrating the protector's hardness, transparency, quantity, and precision manufacturing.

3. PACKAGE CONTENTS

Your BoxWave ClearTouch Crystal ToughShield 9H package includes:

- Two (2) BoxWave ClearTouch Crystal ToughShield 9H Screen Protectors
- Installation Accessories (e.g., cleaning cloth, dust removal sticker, squeegee)

4. SETUP AND INSTALLATION

Follow these steps carefully for optimal installation of your screen protector:

1. **Prepare Your Workspace:** Choose a clean, dust-free environment. Wash your hands thoroughly to avoid transferring oils or dirt to the screen.
2. **Clean the Device Screen:** Use the provided cleaning cloth to wipe the Blaupunkt New Jersey NJ8820 screen. Ensure all smudges, fingerprints, and dust particles are removed. For stubborn spots, a screen cleaner (not included) can be used sparingly.
3. **Remove Dust:** Use the dust removal sticker to dab the screen, lifting any remaining dust particles. Inspect the screen closely under good lighting to ensure it is perfectly clean.
4. **Align the Protector:** Carefully peel back a small portion of the protective film (usually labeled 'Step 1' or similar) from one end of the screen protector. Align the exposed edge of the protector with the corresponding edge of your device screen, paying close attention to cut-outs for speakers or buttons.
5. **Apply the Protector:** Once aligned, slowly and steadily lower the protector onto the screen, gradually peeling off the remaining protective film. Use the provided squeegee or a credit card wrapped in a soft cloth to gently push out any air bubbles from the center outwards as you apply.
6. **Remove Top Film:** After the protector is fully applied and all bubbles are smoothed out, carefully peel off the top protective film (usually labeled 'Step 2' or similar).
7. **Final Inspection:** Perform a final check for any remaining bubbles or dust. Small bubbles often disappear within 24-48 hours.



Image: The BoxWave ClearTouch Crystal ToughShield 9H Screen Protector, ready for installation.



Image: Precision manufacturing ensures a perfect fit for your device.

5. OPERATING AND USAGE

Once installed, the BoxWave ClearTouch Crystal ToughShield 9H Screen Protector operates passively, providing continuous protection without interfering with your device's functionality. You should experience:

- **Unimpeded Touch Sensitivity:** The protector is designed to maintain the original touch responsiveness of your Blaupunkt New Jersey NJ8820 screen.
- **Clear Display:** Enjoy your device's display with full clarity and vibrant colors, as the protector is highly transparent.
- **Enhanced Durability:** The screen protector acts as a sacrificial layer, absorbing impacts and scratches to keep your device's original screen pristine.



Crystal Clarity

Keep your screen unobscured as ClearTouch maintains the vibrancy and clarity of your device's display.



Image: The screen protector maintains crystal clarity for your device's display.



High Definition Clarity

99.9% Color and Transparency

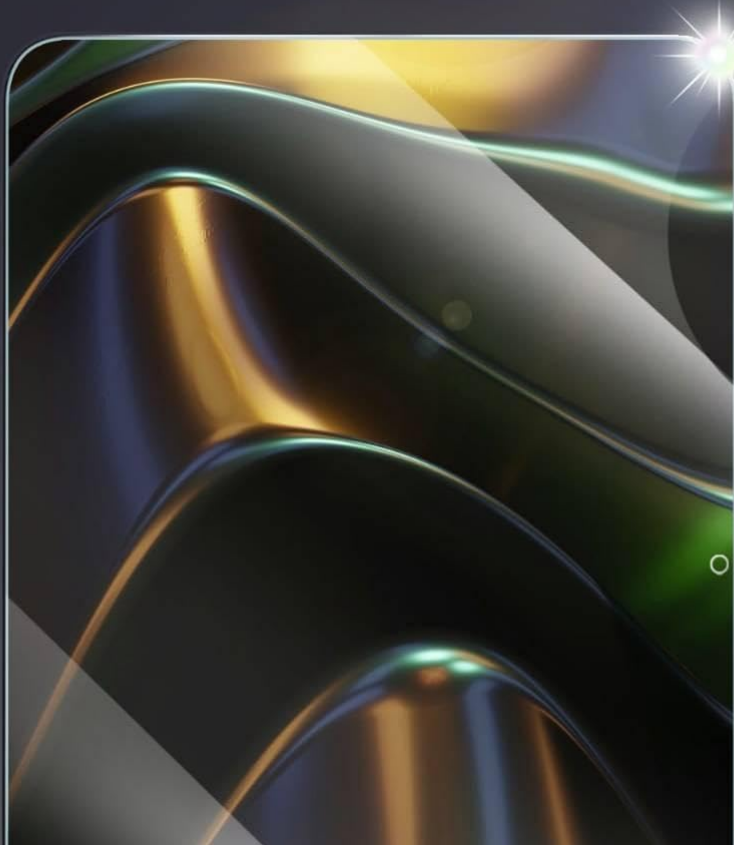


Image: High definition clarity ensures an optimal viewing experience.

6. MAINTENANCE

To keep your screen protector in optimal condition and ensure maximum clarity:

- **Cleaning:** Gently wipe the screen protector with a soft, lint-free cloth. For smudges or fingerprints, slightly dampen the cloth with water or a screen-safe cleaning solution. Avoid harsh chemicals or abrasive materials.
- **Avoid Sharp Objects:** While the protector is highly durable, extreme pressure or direct contact with very sharp objects can still cause damage.
- **Replacement:** If the screen protector becomes heavily scratched or damaged, it has served its purpose by protecting your device's original screen. Replace it with the second protector provided in your package.

7. TROUBLESHOOTING

Here are solutions to common issues you might encounter during or after installation:

- **Bubbles After Installation:** Small bubbles are common and often disappear within 24-48 hours as

the adhesive settles. For larger bubbles, gently lift the nearest edge of the protector and reapply, using the squeegee to push the air out.

- **Dust Under the Protector:** If dust particles are trapped, carefully lift the nearest edge of the protector and use a dust removal sticker or a piece of tape to gently lift the dust off the screen or the adhesive side of the protector. Reapply carefully.
- **Misalignment:** If the protector is significantly misaligned, carefully peel it off entirely, clean the screen again, and attempt reinstallation. The flexible material allows for some reusability.
- **Edges Not Sticking:** Ensure the screen is perfectly clean and dry. Press firmly along the edges with the squeegee. If the issue persists, the protector might be damaged or the screen might have a slight curve not fully accommodated.

8. SPECIFICATIONS

Attribute	Detail
Product Name	ClearTouch Crystal ToughShield 9H Screen Protector
Brand	BoxWave
Compatibility	Blaupunkt New Jersey NJ8820
Hardness Rating	9H
Transparency	99%
Material	Flexible Film (PET)
Package Quantity	2 Screen Protectors
Item Weight	0.7 ounces
Manufacturer	BoxWave


9. WARRANTY AND SUPPORT

For warranty information, product support, or to inquire about replacement parts, please contact BoxWave customer service directly. Refer to the packaging or the official BoxWave website for contact details.

Website: www.boxwave.com

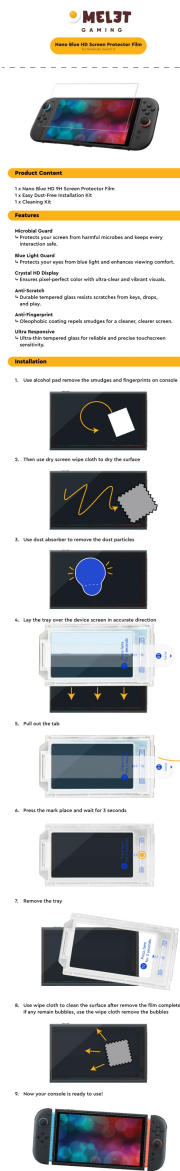
© 2025 BoxWave Corporation. All rights reserved. BoxWave and ClearTouch are registered trademarks.

Related Documents - ClearTouch Crystal ToughShield 9H



[Quikcell Screen Care Guide: Crystal-Clear Film Screen Protector Installation](#)

Follow the Quikcell Screen Care Guide for easy installation of your Crystal-Clear Film screen protector. Learn how to clean, align, and attach the protector to your device for optimal protection.



[MEL3T GAMING Nano Blue HD Screen Protector Film for Nintendo Switch 2 - Installation Guide](#)
Protect your Nintendo Switch 2 screen with the MEL3T GAMING Nano Blue HD Screen Protector Film. Features microbial guard, blue light filtering, anti-scratch, and anti-fingerprint properties. Includes easy installation instructions.

Project Overview			
Specification			
Name:			
Website:			
Client:			
Date:			
Specification			
Product Name: CRSP Electric Projection Screen			
Product Number:			
File Number:			
Edition: A01			
Customer Confirmation			
Please review and sign after verification			
Customize	Proofread	Review	Approve

Page 1

[Yovanxer CBSP Electric Projection Screen: Technical Specifications & Features \(72-130 Inch\)](#)
Comprehensive technical specifications and features for the Yovanxer CBSP Electric Projection Screen, including dimensions, installation, operation, and suitability for ultra-short throw projectors. Available in sizes from 72 to 130 inches.