

pitaka ZF7CM0US-ABHDACAA

## User Manual

Product: pitaka Slim & Light Galaxy Z Fold 7 Case

Model: ZF7CM0US-ABHDACAA

### INTRODUCTION

This manual provides essential information for the proper use, installation, and maintenance of your pitaka Slim & Light Galaxy Z Fold 7 Case. Designed with 1500D Aramid Fiber, this case offers a blend of durability, slimness, and MagSafe compatibility, enhancing your device's protection without adding significant bulk.

### PRODUCT OVERVIEW

The pitaka Galaxy Z Fold 7 Case is crafted from selected 1500D Aramid Fiber, a material known for its exceptional strength and lightweight properties, commonly used in aerospace and bulletproof vests. This ensures extreme durability and resistance to scratches, corrosion, and discoloration.



The pitaka Galaxy Z Fold 7 Case in Sunset color, showcasing its unique woven texture and slim profile on a folded device.

### Key Features:

- **Premium Aramid Fiber:** Woven, not printed, from 1500D aramid fiber for superior strength and a unique tactile feel.
- **Ultra-Slim Design:** Measures only 0.05 inches thin, providing a 'caseless' touch feeling.
- **Lightweight:** Weighs approximately 0.84oz, adding minimal bulk to your device.

- **MagSafe Compatibility:** Built-in strong magnets ensure secure attachment to MagSafe accessories and stable wireless charging.
- **Precise Cutouts:** Ensures easy access to all buttons, ports, and the camera lens, with a raised camera guard for protection.

## Premium Material & Addictive Touch

Woven from light yet strong aramid fiber and special 3D coating, the case remains sleek and robust while delivering an exceptionally smooth touch you'll love to feel.



A detailed view of the aramid fiber weave, demonstrating the premium material and its unique texture.

## Caseless Thin

At just 0.05in thin, you'll barely notice it's there. Maintain the slim silhouette of your phone while adding no extra bulk.



The case's ultra-slim profile, measuring just 0.05 inches, designed to maintain the phone's original sleekness.



A person wearing a light-colored sweater and trousers is holding a smartphone in their right hand. The phone is covered in a vibrant, multi-colored woven fabric case. The background is a soft, neutral tone.

## Airy Light

Crafted from premium aramid fiber, which is 5 times stronger than steel but is about 5 times lighter, this case is light and graceful.

**Min. 0.84oz**

The case is remarkably light, weighing only 0.84oz, providing a barely-there feel.

### INSTALLATION GUIDE

The pitaka Galaxy Z Fold 7 Case is designed as a back cover only, providing protection and MagSafe compatibility to the rear of your device. The front cover is not included.

1. Ensure your Galaxy Z Fold 7 is clean and free of dust or debris on its back surface.
2. Align the camera cutout of the pitaka case with your phone's camera module.
3. Gently press the phone into the case, starting from the camera side, ensuring all edges snap securely into place.
4. Verify that all ports and buttons are accessible through the precise cutouts.



## Add MagSafe to Your Z Fold7

Built-in strong MagSafe magnets ensure a secure hold and stable wireless charging.

Illustration of the installation process, showing the case being fitted onto the back of the Galaxy Z Fold 7.

### FEATURES AND USAGE

Your pitaka case is engineered to enhance your Galaxy Z Fold 7 experience with several integrated functionalities:

#### MagSafe Compatibility

The case features strong built-in magnets that allow for seamless compatibility with MagSafe accessories. This enables secure attachment to MagSafe car mounts, wallets, and other magnetic accessories, as well as stable wireless charging and PowerShare functionality.

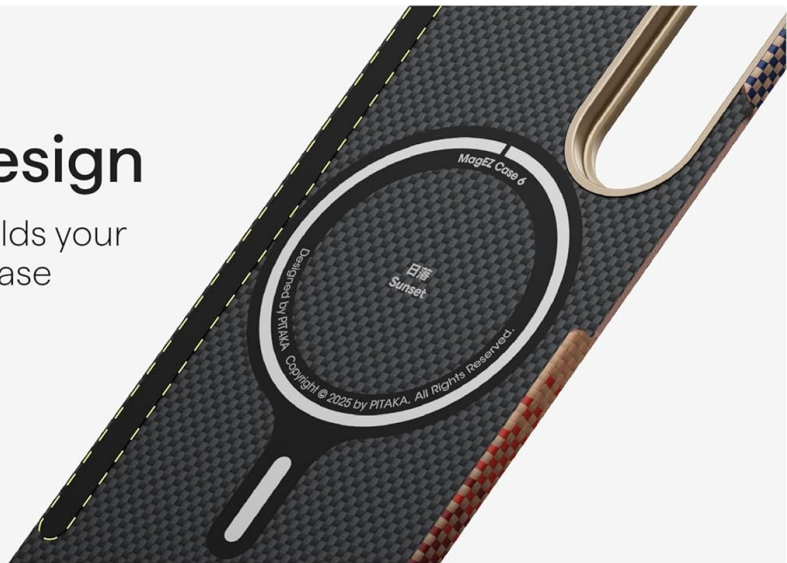
# Precise Cutouts

Easy access to buttons and ports, perfectly fits your screen.



## Non-slip Design

The non-slip tape holds your phone firmly in the case

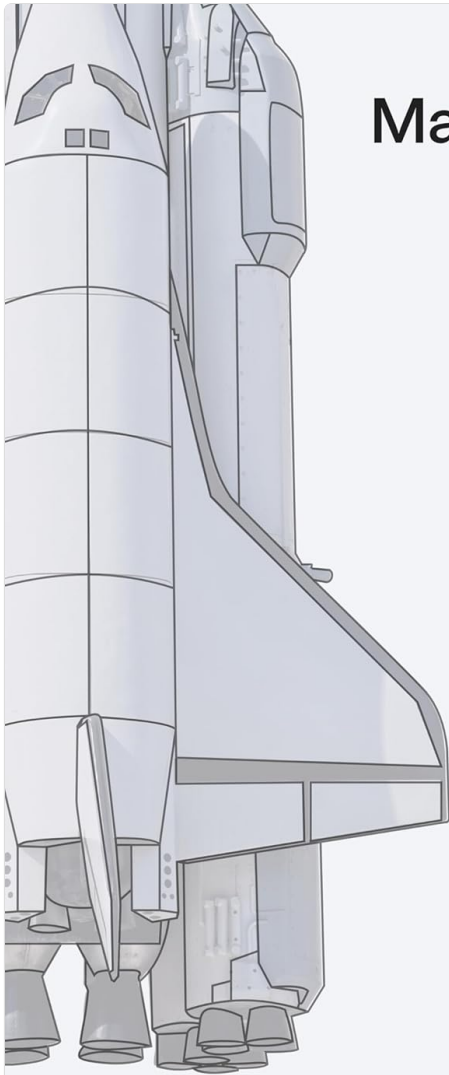


The integrated MagSafe ring ensures strong magnetic attachment and efficient wireless charging.

## Precise Cutouts and Protection

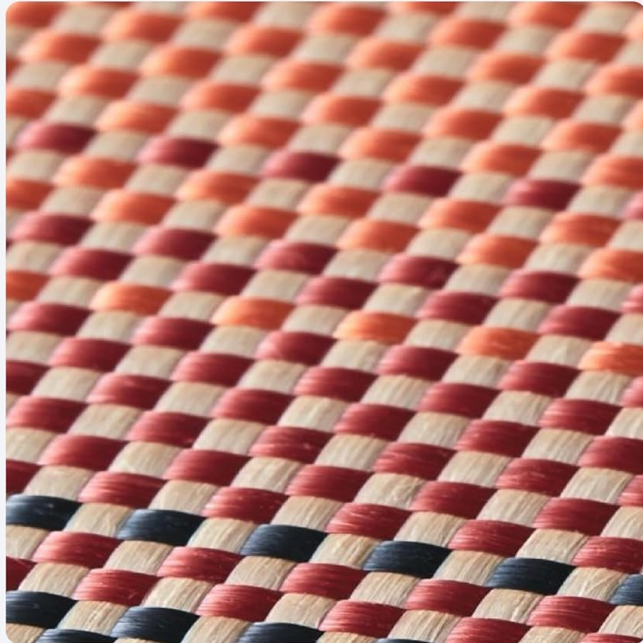
The case is designed with precise cutouts to ensure full access to all buttons, charging ports, and speakers. A raised lip around the camera module provides additional protection against scratches when the phone is placed on flat surfaces.





## Material Makes A Difference

Widely used in the aerospace industry and bulletproof vests, the **aramid fiber** is known for its exceptional strength, lightness, and resistance to scratch, corrosion, and discoloration.



Detailed view of the precise cutouts for ports and the camera, along with the non-slip design for secure handling.

### Non-slip Design

The unique texture of the aramid fiber, combined with a special 3D coating, provides an enhanced grip, reducing the likelihood of accidental drops.

## CARE AND MAINTENANCE

To ensure the longevity and appearance of your pitaka Galaxy Z Fold 7 Case, follow these simple care instructions:

- **Cleaning:** Wipe the case regularly with a soft, damp cloth. Avoid using harsh chemicals, abrasive cleaners, or solvents, as these can damage the aramid fiber and its coating.
- **Storage:** When not in use, store the case in a cool, dry place away from direct sunlight and extreme temperatures.
- **Avoid Sharp Objects:** While highly durable, avoid contact with sharp objects that could potentially scratch or cut the aramid fiber.



## TROUBLESHOOTING

If you encounter any issues with your pitaka Galaxy Z Fold 7 Case, consider the following common solutions:

- **Case Not Fitting Properly:** Ensure the phone is correctly aligned with the case's cutouts and that all edges are fully snapped into place. Remove any screen protectors or skins that might interfere with the fit.
- **MagSafe Accessories Not Attaching Securely:** Verify that the MagSafe accessory is compatible and that there is no debris between the case and the accessory. Ensure the accessory itself is functioning correctly.
- **Wireless Charging Issues:** Confirm that your wireless charger is MagSafe compatible and properly aligned with the case's magnetic ring. Remove any foreign objects between the phone and the charger.

If problems persist, please refer to the Support section for further assistance.

## PRODUCT SPECIFICATIONS

Feature	Specification
Brand	pitaka
Model Number	ZF7CM0US-ABHDACAA
Compatible Phone Models	Galaxy Z Fold7
Material	1500D Aramid Fiber
Color	Sunset
Form Factor	Basic Case (Back Cover Only)
Item Weight	4.8 ounces
Special Features	Aramid Fiber Woven, Lightweight, Magnetic, Slim Fit, Wireless Charging Compatible

## WARRANTY AND SUPPORT

### Warranty Information

Your pitaka Galaxy Z Fold 7 Case is manufactured with high-quality materials and undergoes strict quality control. For specific warranty terms and conditions, please refer to the official pitaka website or contact their customer service directly. Typically, product warranties cover manufacturing defects.

### Customer Support

For any questions, technical assistance, or support inquiries regarding your pitaka product, please visit the official pitaka website or contact their customer support team. You can usually find contact information, FAQs, and additional resources on their support page.

**Online Resources:** [pitaka Official Store on Amazon](#)