

[Manuals.plus](#) /

› [Hajomel](#) /

› Hajomel Portable Tire Inflator User Manual

## Hajomel EB03B

# Hajomel Portable Tire Inflator

## USER MANUAL

### Introduction

---

Thank you for choosing the Hajomel Portable Tire Inflator. This device is designed for quick and accurate inflation of tires for various vehicles, including cars, trucks, SUVs, motorcycles, and bicycles. Its compact and portable design ensures convenience and ease of use, making it an essential tool for both travel and home use.

This manual provides detailed instructions on how to properly set up, operate, and maintain your tire inflator to ensure optimal performance and longevity.

### Package Contents

---

Please verify that all items listed below are included in your package:

- 1 x Hajomel Portable Tire Inflator (Model EB03B)
- 1 x Air Hose with Schrader Valve
- 1 x Long Inflation Cable (primarily for cars)
- 1 x DC Power Cord
- 1 x Type-C Charging Cable
- 1 x General Nozzle Cone / Long Nozzle
- 1 x Needle Adapter / Ball Needle
- 1 x Presta Valve Adapter
- 1 x Storage Pouch / Storage Bag
- 1 x Spare 12V Outlet Fuse
- 1 x User Manual

# PACKAGE INCLUDES

Essential Automotive Products



Image: The tire inflator shown with all its essential accessories, including different nozzles and cables.

## Product Features

- **Quick & Accurate Inflation:** Inflates tires in minutes with precision accuracy up to 120 PSI.
- **Dual Power Source:** Features a powerful 5400mAh rechargeable battery and 12V DC input for versatile use.
- **Digital Display & Gauge:** Large, easy-to-read LCD screen displays real-time and preset pressure values.
- **Multiple Pressure Units:** Easily switch between PSI, kPa, BAR, and KG/CM<sup>2</sup>.
- **Auto Shut-off:** Automatically stops inflation once the preset pressure is reached, ensuring safety and preventing over-inflation.
- **Built-in LED Flashlight:** Provides illumination for low-light conditions or emergencies.
- **Deflate Button:** Allows for decreasing pressure if over-inflated.
- **Compact & Portable:** Designed to fit conveniently in a glove box, trunk, or backpack.

# INTELLIGENT REAL-TIME DISPLAY



Image: Close-up of the inflator's digital display, highlighting real-time and preset pressure readings, and unit indicators.

# LONG-LASTING BATTERY

The image features a central black digital tire inflator with a large battery pack on the left side. The device has a digital display showing '0.00' and 'mAh'. The background is a futuristic, dark environment with blue lightning bolts and machinery. Below the device are four callouts, each with a corresponding image of the vehicle or equipment:

- X8 Refilling Car Tires (195/65R15)**: A white SUV.
- X18 Motorcycle**: A red and black motorcycle.
- X30 Bicycle**: A green and black bicycle.
- X88 Balls**: An orange basketball.

Image: The tire inflator demonstrating its long-lasting battery capacity for various vehicle types and sports equipment.

# AUTO SHUTOFF FOR EFFICIENCY & SAFETY

Hands-Free Inflation,



Image: The inflator in use on a car tire, emphasizing its automatic shut-off function for safe and efficient inflation.

## Setup

Before initial use, it is recommended to fully charge the tire inflator to ensure optimal battery performance.

1. **Charge the Device:** Connect the provided Type-C charging cable to the inflator and a suitable USB power source. The battery indicator on the display will show charging status.
2. **Prepare the Air Hose:** Ensure the air hose is securely connected to the inflator's output port.
3. **Select Appropriate Nozzle:** Choose the correct nozzle adapter for the item you intend to inflate (e.g., Schrader for car tires, Presta for some bicycles, needle for balls).

# Easy To Carry



01 Connect the tube to the tire



02 Set the inflation mode and pressure



03 Click the power button to start or stop inflation

13.5CM

7.6CM

4.6CM

Image: Visual guide illustrating the compact dimensions of the inflator and the simple three-step setup process.

## Operating Instructions

Follow these steps to inflate your tires or other items:

1. **Connect to Tire Valve:** Screw the air hose securely onto the tire's valve stem. Ensure a tight connection to prevent air leakage.
2. **Power On:** Press and hold the power button ( ) to turn on the inflator. The display will light up.
3. **Select Unit:** Press and hold the 'Switch mode/switch unit' button ( ) to cycle through pressure units (PSI, BAR, KPA, Kg/cm<sup>2</sup>) until your desired unit is displayed.
4. **Select Inflation Mode:** Press the 'Switch mode/switch unit' button ( ) briefly to switch between preset modes (Car, Motorcycle, Bicycle, Ball). Each mode has a default pressure value.
5. **Set Target Pressure:** Use the '+' and '-' buttons to adjust the preset pressure value to your desired level. The numbers will flash while adjusting. Wait a few seconds for the numbers to stop flashing to confirm the setting.
6. **Start Inflation:** Press the power button ( ) again to begin inflation. The inflator will automatically stop when the preset pressure is reached.
7. **Stop Inflation (Manual):** To stop inflation manually at any time, press the power button ( ) once more.
8. **Disconnect:** Once inflation is complete, quickly unscrew the air hose from the tire valve. A small

amount of air may escape, which is normal.

9. **LED Light:** Press the 'LED Light' button ( ) to turn the flashlight on or off.

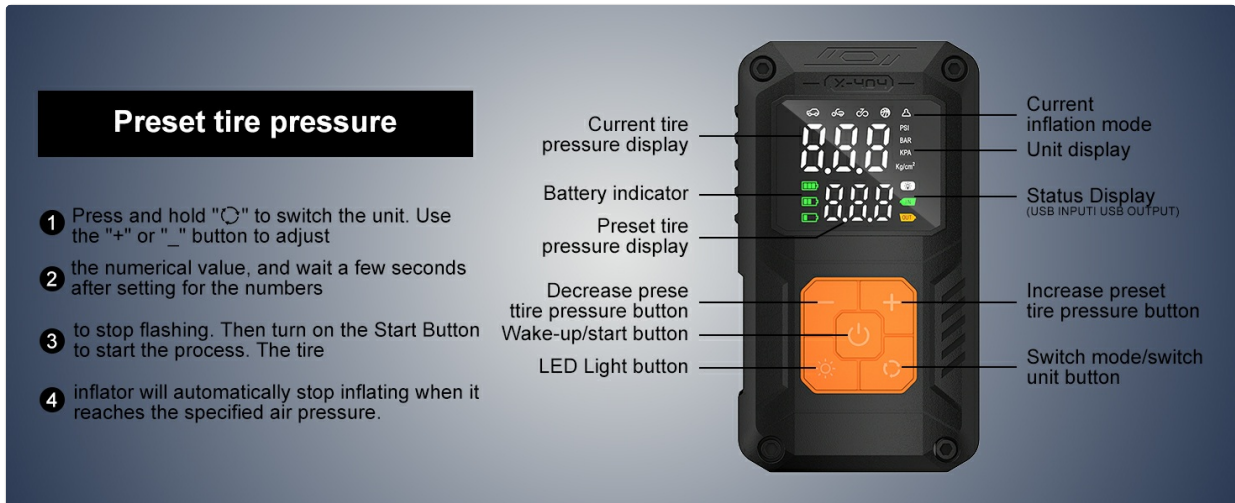


Image: An annotated diagram showing the various components of the inflator's display and control panel.

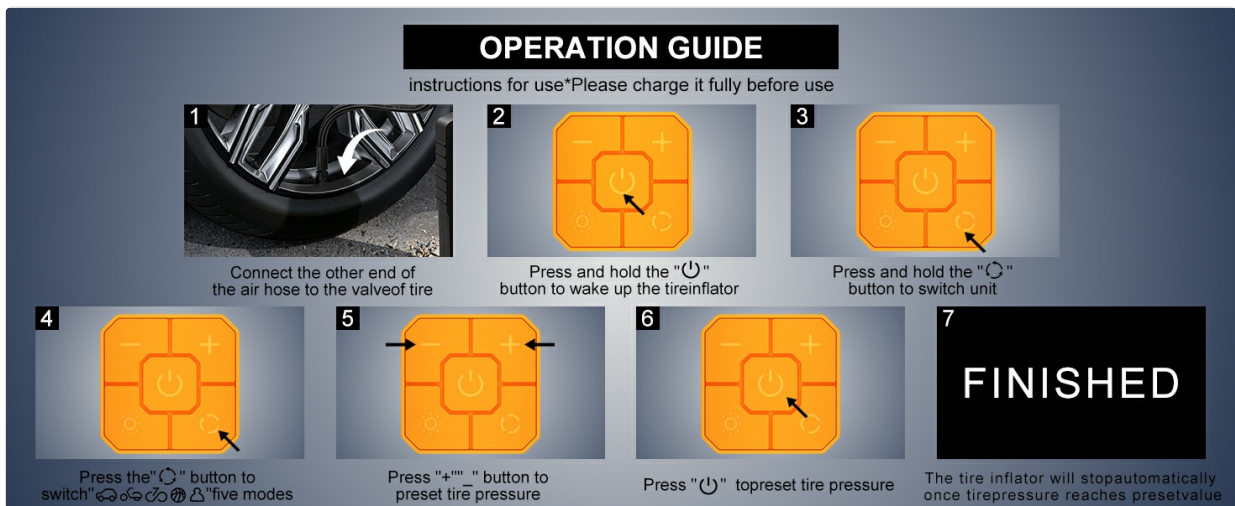


Image: A visual step-by-step guide demonstrating the inflation process from start to finish.



Image: Example of the inflator set to 'Car Mode' with a recommended pressure of 32 PSI.



Image: Example of the inflator set to 'Motorcycle Mode' with a recommended pressure of 32 PSI.



Image: Example of the inflator set to 'Bike Mode' with a recommended pressure of 30 PSI.



Image: Example of the inflator set to 'Ball Mode' with a recommended pressure of 8 PSI.

## Maintenance

---

Proper maintenance ensures the longevity and reliable performance of your tire inflator.

- **Charging:** For optimal battery performance, fully charge the pump before every use, especially after prolonged storage.
- **Cleaning:** Wipe the exterior of the inflator with a soft, dry cloth. Do not use harsh chemicals or

abrasive cleaners.

- **Storage:** Store the inflator in its provided storage pouch in a cool, dry place, away from direct sunlight and extreme temperatures. Ensure the air hose is stored inside the unit or neatly coiled to prevent damage.
- **Nozzle Care:** Keep all nozzle adapters clean and free from debris to ensure proper sealing during inflation.

## Troubleshooting

---

If you encounter issues with your Hajomel Portable Tire Inflator, refer to the following common problems and solutions:

Problem	Possible Cause	Solution
Inflator does not turn on.	Low battery; Device not charged.	Charge the inflator fully using the provided Type-C cable.
Inflation is slow or stops prematurely.	Low battery; Air hose not securely connected; Leakage from valve.	Ensure the device is fully charged. Check that the air hose is tightly screwed onto the tire valve. Inspect the valve for damage.
Inaccurate pressure reading.	Incorrect pressure unit selected; Sensor issue.	Verify the correct pressure unit (PSI, BAR, KPA, Kg/cm <sup>2</sup> ) is selected. If issues persist, contact customer support.
Battery drains quickly.	Inflating large or high-pressure tires; Cold weather; Incomplete charging.	Note that larger tires or cold temperatures can affect battery life. Ensure the device is fully charged before each use.

## Specifications

---

Feature	Detail
Brand	Hajomel
Model Name	EB03B
Power Source	Battery Powered (5400mAh) & 12V DC
Maximum Operating Pressure	120 PSI (Rated), 150 PSI (Max)
Special Feature	Digital Display, LED Light, Auto Shut-off
Material	Plastic
Color	Orange
Item Weight	3.2 ounces
Package Dimensions	8.2 x 8 x 4.2 inches
Battery Cell Type	Lithium Ion

Feature	Detail
UPC	766757187769

## Warranty and Support

---

Hajomel is committed to providing high-quality products and customer satisfaction. While specific warranty details are not provided in this manual, we encourage you to retain your purchase receipt for any potential warranty claims.

For any questions, concerns, or technical assistance regarding your Portable Tire Inflator, please do not hesitate to contact our customer support team. Contact information can typically be found on the product packaging or the retailer's website where you purchased the item.