

Jasion Jasion Electric Mountain Bike

Jasion Electric Mountain Bike User Manual

Model: Jasion Electric Mountain Bike

1. INTRODUCTION

This manual provides essential information for the safe assembly, operation, and maintenance of your Jasion Electric Mountain Bike. Please read this manual thoroughly before your first ride and retain it for future reference. Proper understanding and adherence to these instructions will ensure optimal performance and longevity of your electric bicycle.



Image 1: The Jasion Electric Mountain Bike, showcasing its overall design and components.

2. SAFETY INFORMATION

Your safety is paramount. Always wear a helmet that meets safety standards (e.g., CPSC, CE) when riding. Familiarize yourself with local traffic laws and regulations regarding electric bicycles. Perform a pre-ride safety check before each use.

2.1 Pre-Ride Safety Check

- **Brakes:** Ensure both front and rear brakes are functioning correctly and levers are easily accessible.
- **Tires:** Check tire pressure and inspect for any damage or excessive wear.
- **Battery:** Verify the battery is securely installed and sufficiently charged.
- **Lights & Horn:** Confirm the headlight and horn are operational.
- **Quick Releases:** Ensure all quick-release levers (wheels, seat post) are properly tightened.
- **Handlebars & Seat:** Check that handlebars and seat are securely fastened and adjusted to your comfort.

2.2 General Safety Guidelines

- Do not ride under the influence of alcohol or drugs.
- Maintain a safe distance from other vehicles and pedestrians.
- Be aware of your surroundings and road conditions.
- Avoid riding in adverse weather conditions if possible.
- Do not exceed the maximum load capacity of 264 lbs (120 kg).

3. ASSEMBLY AND SETUP

Your Jasion Electric Mountain Bike may require some assembly upon arrival. Follow these general steps. For detailed visual instructions, refer to the separate assembly guide or video provided by Jasion.

3.1 Unboxing and Initial Inspection

1. Carefully remove all components from the packaging.
2. Inspect for any shipping damage. Contact customer support immediately if damage is found.
3. Verify all parts are present according to the packing list.

3.2 Assembly Steps

1. **Handlebar Installation:** Attach the handlebar to the stem and tighten the bolts securely. Ensure the handlebar is centered and aligned with the front wheel.
2. **Front Wheel Installation:** Install the front wheel into the fork dropouts. Ensure the disc brake rotor is correctly seated in the caliper. Tighten the quick-release skewer or axle nuts firmly.
3. **Pedal Installation:** Identify the left (L) and right (R) pedals. The left pedal tightens counter-clockwise, and the right pedal tightens clockwise. Apply a small amount of grease to the threads and tighten them firmly with a wrench.
4. **Seat Post and Saddle Installation:** Insert the seat post into the frame's seat tube. Adjust the saddle height for comfortable pedaling with a slight bend in your knee at the bottom of the pedal stroke. Secure the quick-release clamp.
5. **Battery Installation:** Slide the battery into its designated compartment on the frame. Ensure it clicks into place securely. Use the key to lock it if applicable.

3.3 Initial Battery Charge

Before your first ride, fully charge the battery. Connect the charger to a power outlet and then to the battery charging port. The indicator light on the charger will show the charging status. A full charge typically takes 5-6 hours.

Safety Comes First

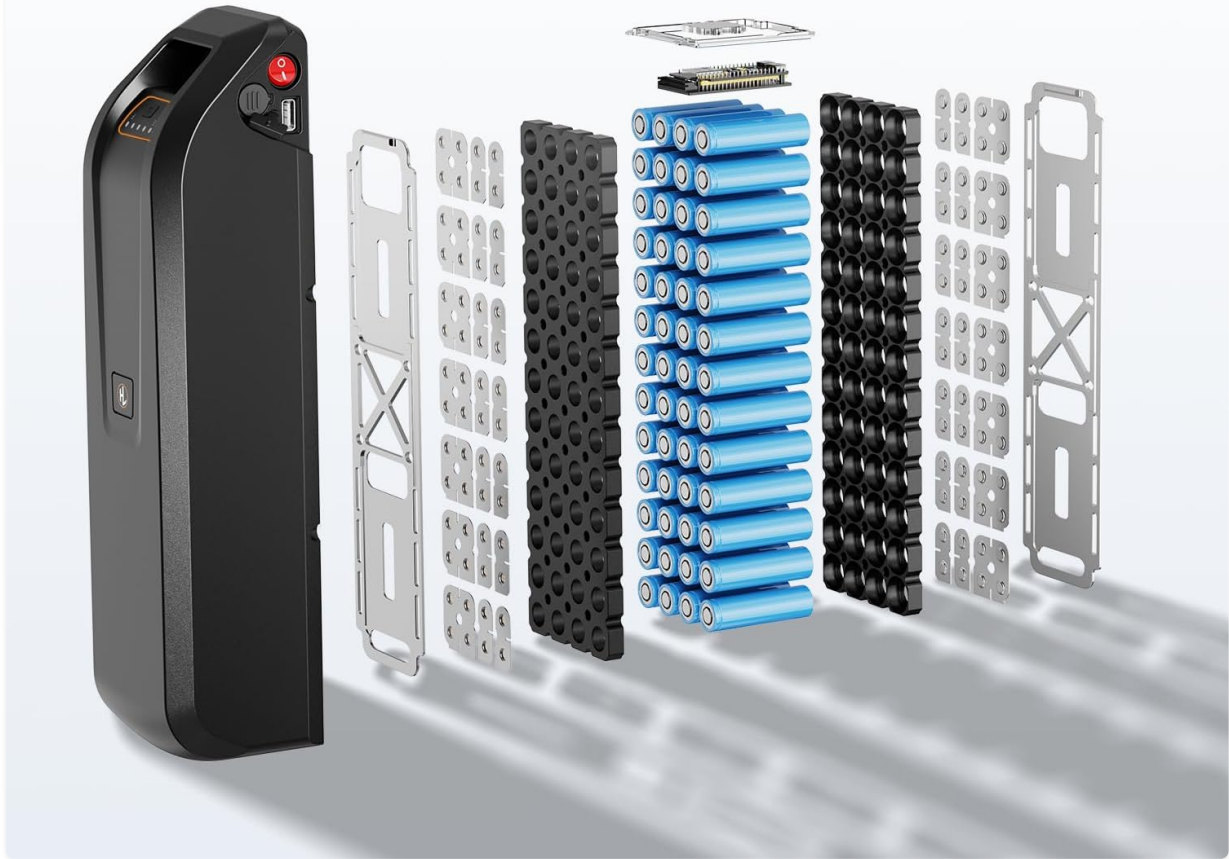


Image 2: Diagram illustrating the internal structure of the Jason Electric Mountain Bike battery, highlighting its safety features and USB charge port.

4. OPERATING INSTRUCTIONS

Understanding how to operate your electric bike's features will enhance your riding experience.

4.1 Powering On/Off

Locate the power button on the display unit. Press and hold it for a few seconds to turn the bike's electrical system on or off.

Upgraded Ergonomic Design

20 MPH



Image 3: The Jasion Electric Mountain Bike's 4-inch display, showing speed, battery level, and pedal-assist mode. It also highlights IPX4 water resistance and anti-slip features.

4.2 Pedal-Assist System (PAS)

The bike features a pedal-assist system with multiple levels. Use the '+' and '-' buttons on the control panel to adjust the assist level. Higher levels provide more motor assistance, making pedaling easier. The display will indicate the current PAS level.

4.3 Throttle Operation

If equipped, the throttle provides power on demand without pedaling. Gently twist the throttle to engage the motor. Use the throttle responsibly and be mindful of your speed.

4.4 Gear Shifting

Your bike is equipped with a 7-speed gear system. Use the shifter on the handlebar to change gears. Shift to lower gears for climbing hills and higher gears for flat terrain or descents. Shift smoothly to avoid strain on the drivetrain.



Power up your Trip



44T Chainring
Flat Road Faster



14-28T Gear
Better climbing Ability



AI Sensor
Pedaling Effortless

Image 4: Close-up view of the Jasion Electric Mountain Bike's drivetrain, showing the 44T chainring and 14-28T gear cassette, designed for efficient pedaling and climbing.

4.5 Braking

The bike uses disc brakes for effective stopping power. Apply both front and rear brakes simultaneously for balanced and controlled stopping. Avoid sudden, hard braking, especially with the front brake, to prevent skidding.

4.6 Headlight and Horn

The integrated headlight and horn are controlled via buttons on the handlebar. Use the headlight for visibility in low-light conditions and the horn to alert others to your presence.



Conquer Bumps & Dark

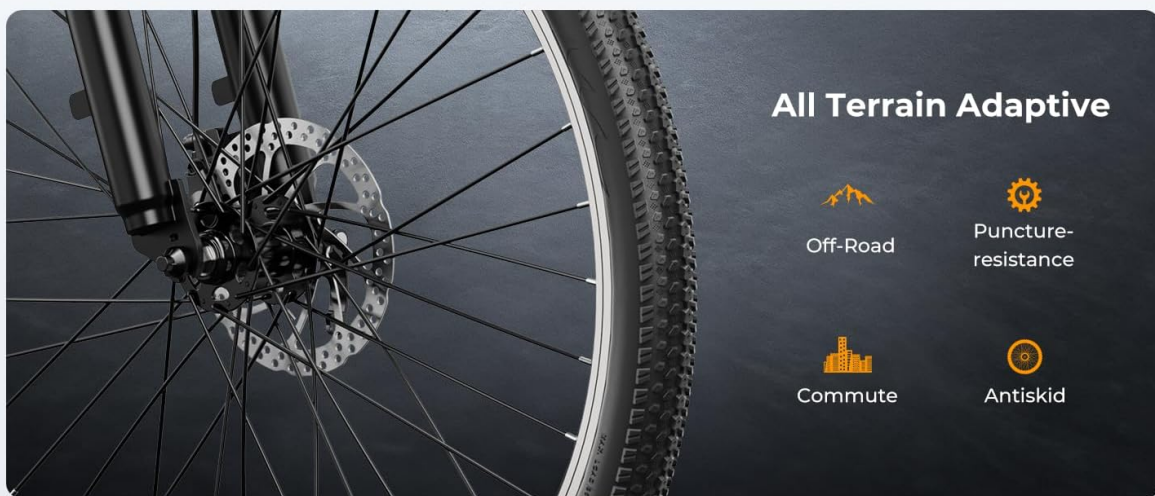


Image 5: Detail of the Jasion Electric Mountain Bike's front fork suspension with 100mm travel, adjustable settings, and the integrated 3W headlight with built-in horn.

5. MAINTENANCE

Regular maintenance is crucial for the safety, performance, and lifespan of your electric bike.

5.1 Battery Care

- Charge the battery regularly, even if not in use, to maintain its health.
- Avoid completely draining the battery before recharging.
- Store the battery in a cool, dry place, away from direct sunlight and extreme temperatures.
- If storing for an extended period, charge the battery to 50-70% capacity.

5.2 Tire Maintenance

- Check tire pressure before each ride and inflate to the recommended PSI (found on the tire sidewall).
- Inspect tires for cuts, punctures, or excessive wear.

5.3 Brake System

- Regularly check brake pads for wear and replace them when necessary.

- Ensure brake levers have proper tension and respond effectively.
- Inspect brake cables for fraying or damage.

5.4 Drivetrain

- Keep the chain clean and lubricated to ensure smooth shifting and prevent wear.
- Inspect gears and chain for damage or excessive wear.

5.5 General Cleaning

Clean your bike regularly with a damp cloth and mild soap. Avoid using high-pressure washers directly on electrical components.

6. TROUBLESHOOTING

This section addresses common issues you might encounter with your Jasion Electric Mountain Bike.

6.1 Bike Not Powering On

- **Check Battery:** Ensure the battery is fully charged and securely installed.
- **Battery Lock:** Verify the battery is locked into place.
- **Connections:** Inspect all visible electrical connections for looseness or damage.

6.2 Motor Not Assisting

- **PAS Level:** Ensure the pedal-assist system is set to a level above zero.
- **Brake Levers:** Check if a brake lever is slightly engaged, as this will cut motor power.
- **Battery Level:** Confirm the battery has sufficient charge.

6.3 Brakes Squealing or Ineffective

- **Brake Pads:** Inspect brake pads for wear or contamination. Clean or replace as needed.
- **Rotor:** Check the brake rotor for dirt or damage. Clean with disc brake cleaner.
- **Adjustment:** Brakes may need adjustment. Consult a bike mechanic if unsure.

For issues not covered here or if problems persist, please contact Jasion customer support.

7. SPECIFICATIONS

Detailed technical specifications for the Jasion Electric Mountain Bike.

Bike Type	Electric Mountain Bike
Motor	350W Brushless Motor (500W Peak)
Battery	36V 10Ah (360Wh) Removable Lithium-ion
Charging Time	5-6 hours
Max Range	Up to 40 miles (Pedal-Assist Mode)

Top Speed	20 mph
Wheel Size	26 Inches
Frame Material	High Carbon Steel
Suspension Type	Front Fork (100mm Travel)
Number of Speeds	7
Brake Style	Disc Brakes
Bike Weight	49.6 lbs (22.5 kg)
Max Load Capacity	264 lbs (120 kg)
Recommended Rider Height	5'4" - 6'4" (165cm - 195cm)



Powerful Brushless Motor

Image 6: Diagram illustrating the Jasion Electric Mountain Bike's 500W peak brushless motor, highlighting its internal components and ability to assist up to 15-degree inclines.



		5'4"-6'4" Recommended height	<table border="1"> <tr> <td>A. Total length</td> <td>68"</td> </tr> <tr> <td>B. Handlebar height</td> <td>42.5"</td> </tr> <tr> <td>C. wheelbase</td> <td>42"</td> </tr> <tr> <td>D. Minimum seat height</td> <td>30"</td> </tr> <tr> <td>E. Maximum seat height</td> <td>39"</td> </tr> <tr> <td>F. Chain stay length</td> <td>18"</td> </tr> <tr> <td>G. Stand height</td> <td>30"</td> </tr> <tr> <td>H. Top tube length</td> <td>23"</td> </tr> <tr> <td>I. Wheel diameter</td> <td>25"</td> </tr> <tr> <td>J. Head tube length</td> <td>7"</td> </tr> <tr> <td>K. Handlebar length</td> <td>25"</td> </tr> <tr> <td>L. Minimum Seat to Floor</td> <td>33.5"</td> </tr> </table>	A. Total length	68"	B. Handlebar height	42.5"	C. wheelbase	42"	D. Minimum seat height	30"	E. Maximum seat height	39"	F. Chain stay length	18"	G. Stand height	30"	H. Top tube length	23"	I. Wheel diameter	25"	J. Head tube length	7"	K. Handlebar length	25"	L. Minimum Seat to Floor	33.5"
	A. Total length	68"																									
	B. Handlebar height	42.5"																									
C. wheelbase	42"																										
D. Minimum seat height	30"																										
E. Maximum seat height	39"																										
F. Chain stay length	18"																										
G. Stand height	30"																										
H. Top tube length	23"																										
I. Wheel diameter	25"																										
J. Head tube length	7"																										
K. Handlebar length	25"																										
L. Minimum Seat to Floor	33.5"																										
	49.6LBS Bicycle weight																										
	MAX 264LBS Load capacity																										

Image 7: Visual guide to the Jasion Electric Mountain Bike's dimensions (Total length, Handlebar height, Wheelbase, etc.) and recommended rider height and weight capacity.

8. WARRANTY AND SUPPORT

Your Jasion Electric Mountain Bike comes with a **1-Year Warranty** from the date of purchase. This warranty covers manufacturing defects in materials and workmanship. Please retain your proof of purchase for warranty claims.

8.1 What the Warranty Covers

The warranty typically covers the frame, motor, battery, and controller against defects under normal use. Specific terms and conditions apply.

8.2 What the Warranty Does Not Cover

The warranty generally does not cover normal wear and tear parts (e.g., tires, brake pads, chain), damage from misuse, accidents, unauthorized modifications, or improper maintenance.

8.3 Contacting Support

For warranty service, technical assistance, or any questions regarding your Jasion Electric Mountain Bike, please contact Jasion customer support through the retailer where you purchased the bike or visit the

official Jasion website for contact information.

© 2025 Jasion. All rights reserved.