

Breco N6 Mini

Breco N6 Mini Neck Massager with Heat

Model: N6 Mini | Brand: Breco

INTRODUCTION

Thank you for choosing the Breco N6 Mini Neck Massager with Heat. This device is designed to provide targeted relief for neck, shoulder, and back tension through innovative massage techniques and soothing heat therapy. Please read this manual carefully before use to ensure safe and effective operation.

PRODUCT OVERVIEW


The Breco N6 Mini combines advanced technology with ergonomic design for a personalized massage experience.

- **Innovative Plum Blossom Rollers:** Patented 5D nodes simulate real finger-joint kneading, reaching deeper into muscle tissues.
- **Real Hand-Like Shiatsu Massage:** Ergonomically shaped to contour the cervical spine, mimicking a professional therapist's pressure.
- **Advanced Red Light & Heat Therapy:** Features deep-penetrating red light and soothing heat (108°F to 119°F) to accelerate blood circulation and muscle repair.
- **Whisper-Quiet & Long-Life Battery:** Operates at less than 55dB and offers up to 80 minutes of cordless use on a single charge.
- **Hands-Free & Portable Design:** Lightweight and designed for convenient use in various settings, including office, gym, or travel.

Perfect Gift for Family Love Friends



Image: General view of the Breo N6 Mini Neck Massager, highlighting its compact and ergonomic design.



2025 Neck and Shoulder Massager with Heat

Your est personal massager

- Deep Kneading -3 modes
- Heat Function -3 modes
- Life-like Massage
- APP controlled
- Auto-off Timer
- Adjustable Intensity

Image: Close-up of the Breo N6 Mini Neck Massager, showcasing the innovative plum blossom shaped massage rollers.

SAFETY INSTRUCTIONS

WARNING: To reduce the risk of electric shock, burns, fire, or injury, read all instructions before

using this appliance.

- Consult your doctor before using this massager if you are pregnant, have a pacemaker, suffer from diabetes, phlebitis, thrombosis, or are at increased risk of developing blood clots.
- Do not use on open wounds, swollen areas, or inflamed skin.
- Avoid using the massager near water or in excessively humid environments.
- Keep out of reach of children.
- Do not use for more than 15 minutes at a time. Allow the device to cool down before reuse.
- If you experience any discomfort or pain, discontinue use immediately.

SETUP

1. **Unboxing:** Carefully remove the Breo N6 Mini Neck Massager and all accessories from the packaging. Ensure the USB-C charging cable and user manual are present.
2. **Initial Charge:** Before first use, fully charge the device. Connect the provided USB-C cable to the charging port on the massager and plug the other end into a compatible USB power adapter (not included). The indicator light will show charging status.
3. **Strap Adjustment:** The massager features adjustable straps. For hands-free use, connect the buckle at the back and adjust the length to ensure a snug fit around your neck and shoulders.

Hands-Free & Hand-Pull Massage

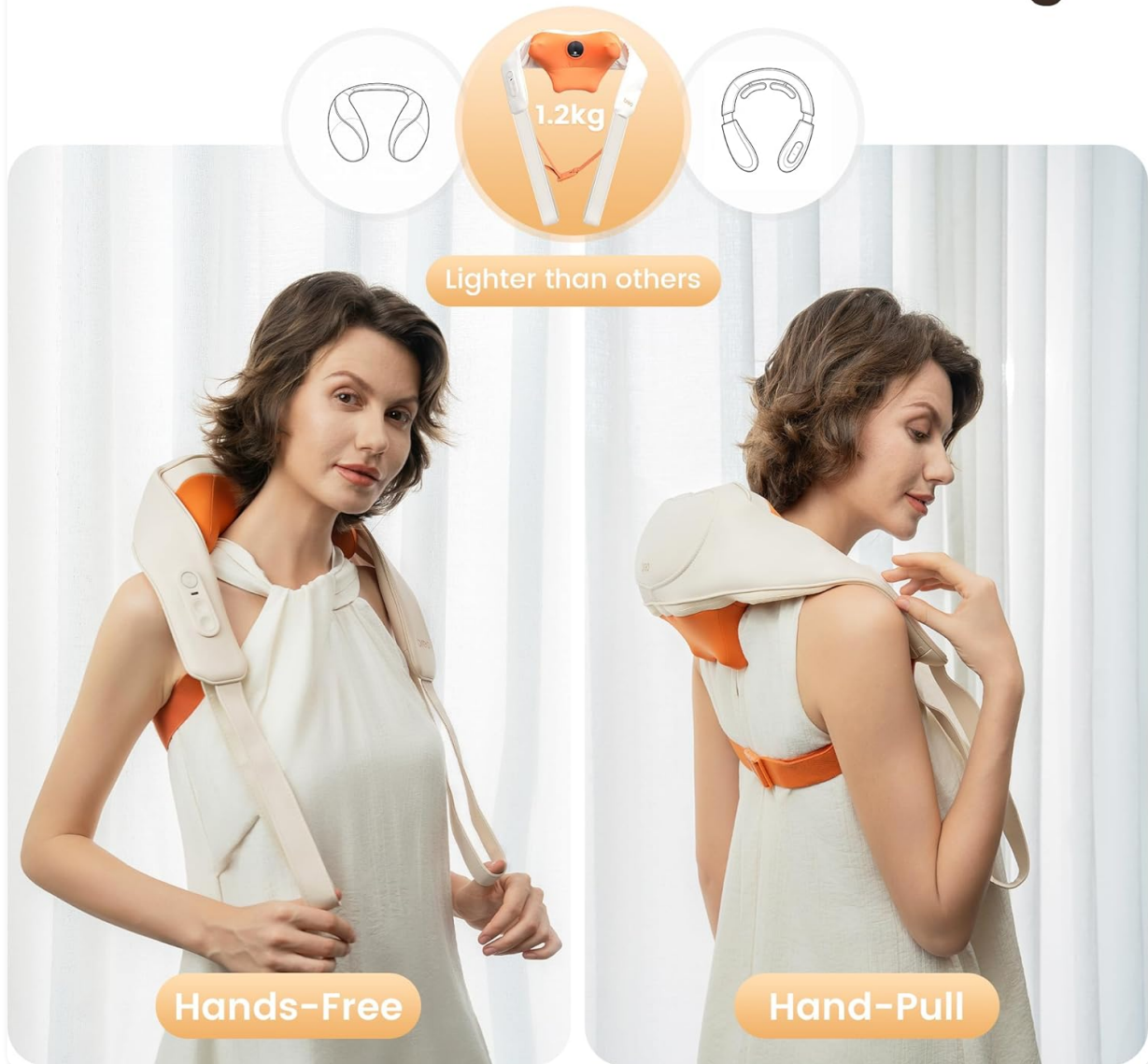


Image: The Breo N6 Mini Neck Massager showing its adjustable straps for hands-free or hand-pull usage.

OPERATING INSTRUCTIONS

The control panel is conveniently located on one of the arm straps. It features intuitive buttons for easy operation.

- **Power On/Off:** Press and hold the power button () for 2-3 seconds to turn the massager on or off.
- **Massage Mode Selection:** Press the mode button () to cycle through the available massage modes (e.g., kneading, master, scraping). The device offers 3 distinct modes.
- **Heat Function:** Press the heat button () to activate or deactivate the heat therapy. The device offers 2 heating levels (108°F and 119°F).
- **Intensity Adjustment:** Press the intensity button () to adjust the massage intensity. There are multiple intensity levels to choose from.
- **Auto-Off Timer:** For safety and energy conservation, the massager is equipped with an automatic shut-off feature after 10 minutes of continuous use.

Video: Official Breo N6 Mini Neck Massager demonstration, showing the control panel and various functions.

USAGE SCENARIOS

The Breo N6 Mini is versatile and can be used on various body parts for targeted relief.

- **Neck & Shoulders:** Position the massager around your neck and shoulders. Use the hands-free strap or hold the arm straps to adjust pressure.
- **Back:** Place the massager on your upper, middle, or lower back. Lean against a chair or sofa to apply pressure.
- **Thighs & Calves:** Position the massager on your thighs or calves. Adjust the straps or use your hands to hold it in place for optimal contact.
- **Hands-Free Use:** Secure the massager with the adjustable buckle strap around your waist or chest, allowing you to relax without holding the device.

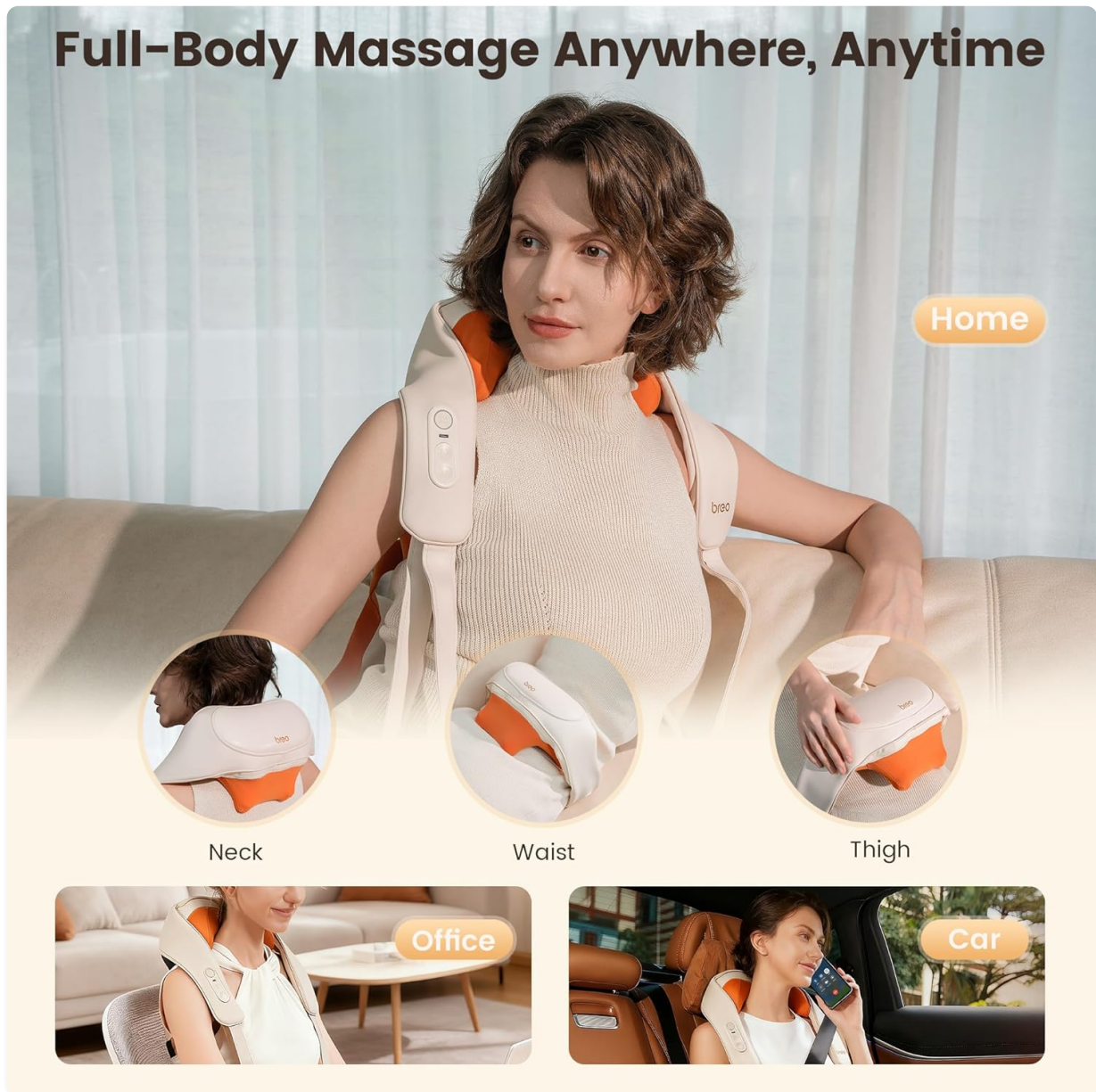


Image: The Breo N6 Mini Neck Massager demonstrating its versatility for use on the neck, waist, and thigh, suitable for various environments like home, office, or car.

MAINTENANCE

- **Cleaning:** The outer cover of the massager is removable and can be cleaned. Unzip the cover,

remove it, and hand wash with mild soap and water. Allow it to air dry completely before reattaching.

- **Storage:** Store the massager in a cool, dry place away from direct sunlight and moisture.
- **Battery Care:** To prolong battery life, avoid fully discharging the device frequently. Charge it regularly, even if not in use for extended periods.

TROUBLESHOOTING

- **Device Not Turning On:** Ensure the device is fully charged. If the battery is low, connect it to the charger.
- **Weak Massage:** Adjust the intensity level using the intensity button. For stronger pressure, use the hand-pull straps or lean against a surface.
- **No Heat:** Ensure the heat function is activated. If the device has been running for a long time, it might temporarily disable heat to prevent overheating. Allow it to cool down.
- **Unusual Noise:** If you hear unusual noises, turn off the device and inspect for any obstructions. If the issue persists, contact customer support.

SPECIFICATIONS

Feature	Detail
Brand	Breo
Model Name	Breo N6 Mini
Model Number	B0FHJ1RY86
Product Dimensions	6.69 x 5.51 x 11.22 inches; 3.4 Pounds
Power Source	Battery Powered
Battery Average Life	80 minutes
Special Features	Heat, Portable, Cordless
Massage Therapy Technique	Rolling, Shiatsu
Heat Levels	2 (108°F, 119°F)
Noise Level	<55dB
Material Type	Polyurethane

WARRANTY AND SUPPORT

For warranty information or customer support, please refer to the contact details provided with your product packaging or visit the official Breo website. Keep your purchase receipt for any warranty claims.

