

[Manuals.plus](#) /

> [LELO](#) /

> LELO Switch Double-Ended Wand Massager User Manual

LELO A0285

LELO Switch Double-Ended Wand Massager User Manual

Model: A0285

INTRODUCTION

This manual provides comprehensive instructions for the safe and effective use of your LELO Switch Double-Ended Wand Massager. Please read this manual thoroughly before first use and retain it for future reference.

for versatile **pleasure**

This dual-ended massager is designed for all-around pleasure, featuring two powerful motors: one for external stimulation and one for internal sensations. The rounded head features soft, textured ribs for enhanced external enjoyment, while the opposite end delivers deep, satisfying vibrations. Compact, elegant, and app-enabled for customizable control, it offers a modern upgrade to the classic wand.



Image: The LELO Switch massager, highlighting its dual-ended design for versatile use. The image describes it as a compact, elegant, and app-enabled device offering a modern upgrade to classic wands.

PACKAGE CONTENTS

Verify that all items are present in your LELO Switch package:

- LELO Switch Double-Ended Wand Massager
- USB Charging Cable
- Satin Storage Pouch
- Personal Moisturizer Sachet (5 ml / 0.17 fl. oz.)

- Warranty Registration Card
- User Manual (this document)

LELO SWITCH™

double-sided wand vibrator



MANUAL

how to use guide



MOISTURIZER SACHET

water-based lubricant
5 ml / 0.17 fl. oz.



CHARGING CORD

USB cable



SATIN POUCH

for storage



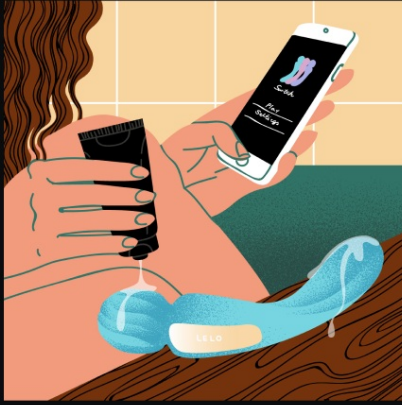
WARRANTY CARD

verifies product authenticity

Image: A visual representation of the LELO Switch package contents, including the device, USB charging cable, satin pouch, personal moisturizer, and warranty card.

SETUP AND FIRST USE

1. **Initial Charge:** Before first use, fully charge the LELO Switch for 2 hours using the provided USB charging cable. Connect the cable to the device's charging port and a USB power source. The indicator light will show charging status.
2. **App Download:** For enhanced features and control, download the LELO app from your device's app store.
3. **Preparation:** Apply a water-based lubricant, such as the included LELO Personal Moisturizer, to the device and your body for comfortable use.



how to use?

STEP 1

Prep

First, download the LELO app to activate the exclusive modes. Then, apply LELO Personal Moisturizer to both your body and the toy for enhanced pleasure.

Image: An illustration demonstrating the preparation step, including downloading the LELO app and applying lubricant before use.

OPERATING INSTRUCTIONS

The LELO Switch features intuitive controls for a personalized experience.

Basic Device Controls:

- **To Turn On:** Press the '+' button or the central power button.
- **To Switch Modes:** Press the central button briefly to cycle through the available vibration patterns.
- **To Adjust Intensity:** Press the '+' or '-' buttons to increase or decrease vibration intensity.
- **To Turn Off:** Press and hold the central button.

App Connectivity:

Connect your LELO Switch to the LELO app via Bluetooth to unlock additional modes, customize vibration patterns, and engage in partner play.



How to use

BEFORE FIRST USE

charge for 2 hours

TO TURN IT ON

press the + or central power button

TO SWITCH BETWEEN THE MODES

press the central button shortly

TO ADJUST THE INTENSITY

press the + or – button

TO TURN IT OFF

press and hold the central button

APP-CONNECTED

connect your device via Bluetooth to unlock additional modes

Image: A hand holding the LELO Switch, illustrating the basic controls for power, mode selection, and intensity adjustment, along with a note on app connectivity.

Usage Guidance:

1. **Engage:** Gently place the ribbed head on external pleasure areas for stimulation, or insert the curved end for internal pleasure.
2. **Explore:** Adjust intensity and modes using the device controls or the app. Experiment with both ends to discover preferred sensations.
3. **Indulge:** Allow sensations to build as you explore different patterns and power levels. Mix and match ends for a full-bodied experience.

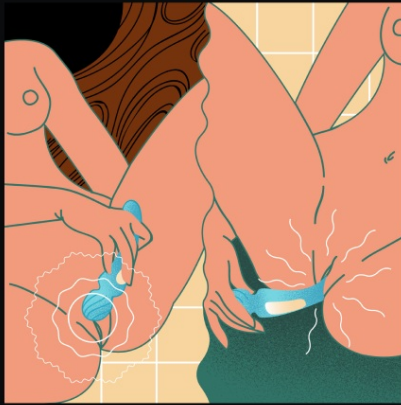


STEP 2

Engage

Gently place the ribbed head on the outer pleasure area for external stimulation, or insert the curved end for internal pleasure. Adjust intensity using the device controls or via the app.

Image: An illustration depicting the 'Engage' step, showing how to use the ribbed head for external stimulation.



STEP 3

Indulge

Let the sensations build as you explore different patterns and power levels. Mix and match ends for a full-bodied experience.

Image: An illustration for the 'Indulge' step, demonstrating the versatile use of both ends of the LELO Switch for a comprehensive experience.

CARE AND MAINTENANCE

- **Cleaning:** The LELO Switch is fully waterproof (IPX7 certified). Clean the device thoroughly after each use with warm water and a toy cleaner or mild soap. Rinse well and pat dry with a lint-free cloth.
- **Storage:** Store the device in its satin pouch in a cool, dry place, away from direct sunlight and extreme temperatures.
- **Charging:** Recharge the device when the battery is low. A full charge provides approximately 2 hours of use.
- **Travel Lock:** To activate the travel lock, press and hold the '+' and '-' buttons simultaneously for 3 seconds. Repeat to deactivate.

Useful information



CHARGING TIME / USE TIME

2 h both



TRAVEL LOCK

hold the + and the - buttons for 3 seconds



STANDBY

90 days



USB RECHARGEABLE & WATERPROOF

enjoy unlimited climaxes anytime, anywhere



Image: The LELO Switch device accompanied by key information regarding its charging time, usage duration, travel lock function, standby time, and its USB rechargeable, waterproof design.

TROUBLESHOOTING

Issue	Possible Cause	Solution
Device does not turn on.	Battery is depleted or travel lock is active.	Charge the device for 2 hours. Deactivate travel lock by holding '+' and '-' for 3 seconds.
Vibrations are weak.	Low battery or intensity setting is too low.	Recharge the device. Increase intensity using the '+' button.
Cannot connect to LELO app.	Bluetooth is off, device is off, or app needs restart.	Ensure device is on and charged. Enable Bluetooth on your phone. Restart the LELO app.

SPECIFICATIONS

Model: A0285

Material: Body-safe Silicone

Dimensions: 217 x 64 x 43 mm (8.5 x 2.5 x 1.7 inches)

Insertable Length: 83 mm (3.3 inches)

Weight: 167 g (5.9 oz)

Battery: 1 Lithium Polymer (rechargeable)

Charging Time: 2 hours

User Time: Up to 2 hours

Interface: 3-button interface, App-connected

Modes: 12 pleasure settings (10 on device, 2 additional via app)

Intensity Levels: 16

Waterproof: IPX7 certified

Manufacturer: LELO

ticking all the boxes

- CERTIFIED BODY-SAFE**
the highest standard of safety and construction
- DOUBLE STIMULATION**
two powerful motors for versatile pleasure
- 10 SETTINGS + 2 ON THE APP**
with 16 intensity levels, from a teasing murmur to a satisfying pulse
- 100% WATERPROOF**
perfect for the bath and shower
- ISO 3533 SAFETY CERTIFIED**
indulge in pleasure with toys made at the highest possible safety standard
- SIZE AND WEIGHT**
Size: 217 x 64 x 43 mm / 8.5 x 2.5 x 1.7 in
Insertable length: 83 mm / 3.3 in
Weight: 167 g / 5.9 oz
- LONG-LASTING CHARGE**
longer time for pleasure

Image: A summary graphic detailing the key features and specifications of the LELO Switch, such as its body-safe material, dual stimulation, multiple settings, waterproof rating, and dimensions.

WARRANTY AND SUPPORT

LELO products are designed for quality and durability. Please refer to the included Warranty Registration Card for specific warranty terms and conditions.

For product support, troubleshooting assistance, or warranty claims, please visit the official LELO website or contact LELO customer service. Contact information can typically be found on the LELO website or on your warranty card.

Legal Disclaimer: Statements regarding dietary supplements have not been evaluated by the FDA and are not intended to diagnose, treat, cure, or prevent any disease or health condition. This product is not a dietary supplement.