



[Manuals.plus](#) /

› [Yaheetech](#) /

› Yaheetech Folding Desk with Monitor Stand (Model MM-00149828) User Manual

Yaheetech MM-00149828

Yaheetech Folding Desk with Monitor Stand User Manual

Model: MM-00149828

Brand: Yaheetech

INTRODUCTION

This manual provides instructions for the setup, operation, and maintenance of your Yaheetech Folding Desk with Monitor Stand. Please read these instructions carefully before use and retain them for future reference.



Image: Yaheetech Folding Desk with Monitor Stand. This image shows the desk in a typical home office or bedroom setup, highlighting its design and functionality.

SAFETY INFORMATION

Always ensure the desk is placed on a stable, level surface before use. Do not exceed the maximum weight capacities specified in the 'Specifications' section.



CAUTION:

Ensure fingers are kept away from the metal tubes underneath while folding the table to avoid pinching.

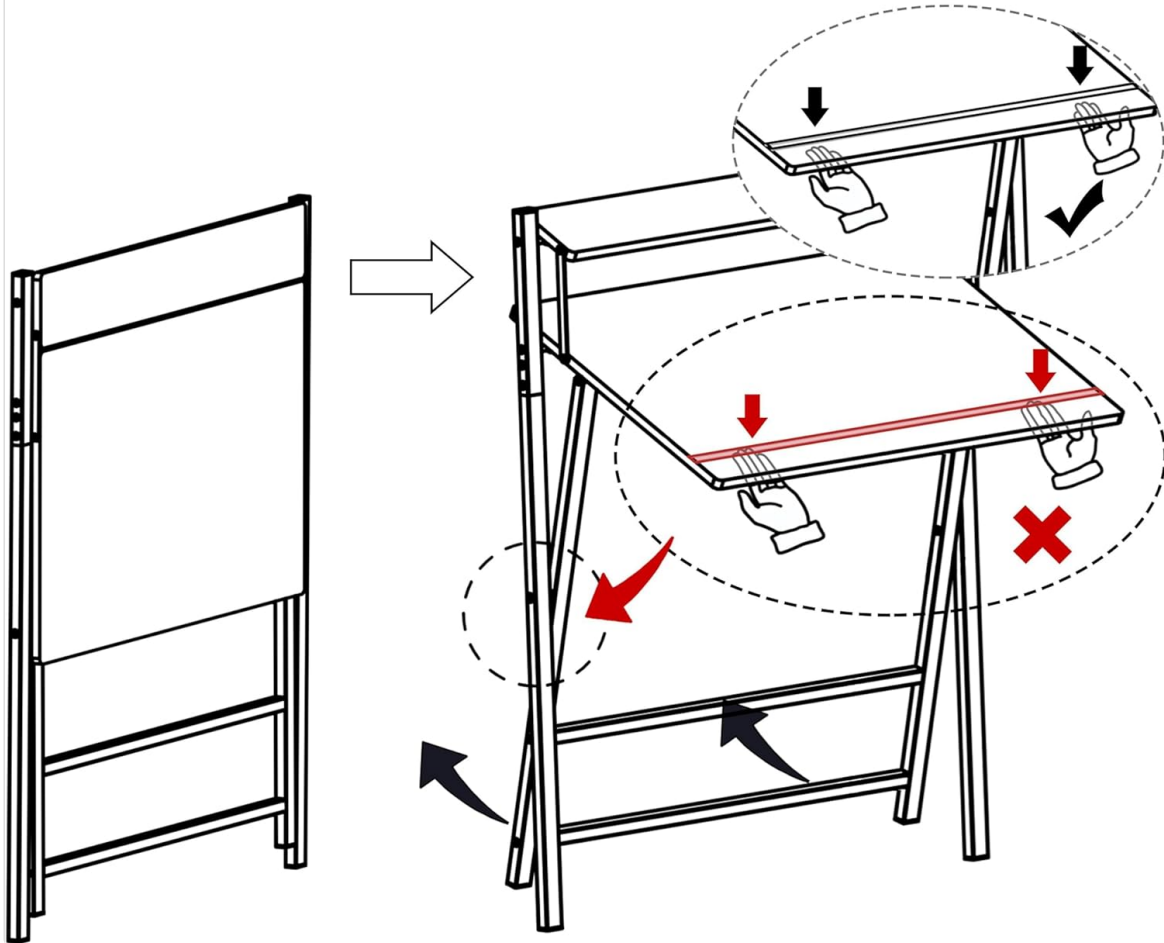


Image: Caution diagram for safe folding. Ensure fingers are kept away from metal tubes underneath while folding the table to avoid pinching.

CAUTION: Ensure fingers are kept away from the metal tubes underneath while folding the table to avoid pinching.

SETUP INSTRUCTIONS

Your Yaheetech Folding Desk is designed for easy setup with minimal assembly required. It arrives largely pre-assembled and only needs to be unfolded and secured. The package includes 1 Foldable Computer Desk, 1 Assembly Instructions, and 1 Accessory Kit.

Unfolding the Desk

1. Carefully remove the desk from its packaging.
2. Place the folded desk on a flat surface.
3. Gently unfold the main tabletop and the support legs. Ensure the X-shaped metal frame is fully extended and locked into position for stability.
4. Raise the monitor stand to its upright position and ensure it is securely seated.

Maximum Weight Capacity:

🛒 Tabletop: 60 kg

🛒 Shelf: 10 kg

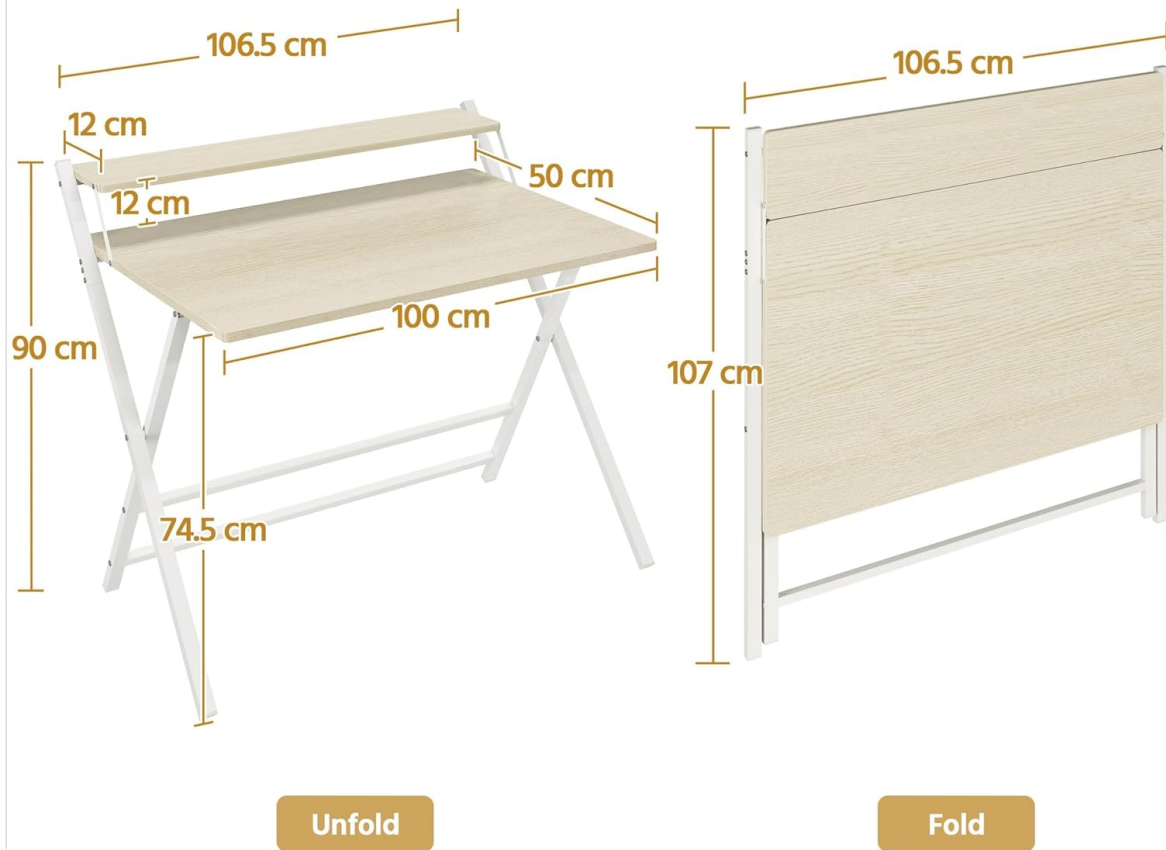


Image: Unfolded and folded desk with key dimensions. This image illustrates the desk's configuration when ready for use and when stored.

Stable X-Shaped Metal Legs

Made of strong steel to provide reliable support.



Image: Stable X-shaped metal legs. These legs are made of strong steel to provide reliable support for the desk.

OPERATING INSTRUCTIONS

Using the Monitor Stand

The integrated monitor stand is designed to elevate your screen to a comfortable eye level, promoting better posture and freeing up valuable space on the main tabletop. Place your monitor or laptop on this elevated shelf.



Practical Monitor Riser

- Frees up valuable desk space
- Raises the screen to a comfortable height

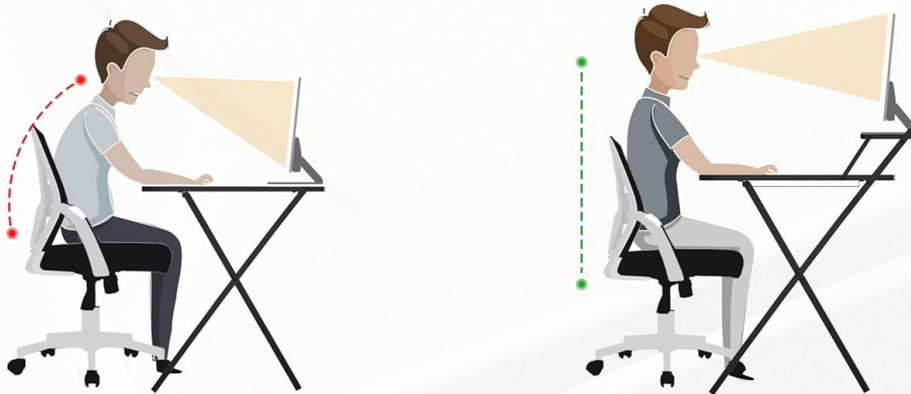


Image: Practical Monitor Riser. This image demonstrates how the elevated monitor stand helps maintain ergonomic posture by raising the screen to a comfortable height.

Folding for Storage

When not in use, the desk can be easily folded flat for compact storage. Follow the unfolding steps in reverse, ensuring to keep fingers clear of moving parts as indicated in the safety section.

Space-Saving Foldable Design

Folds flat for easy storage. Fits behind doors, under beds or sofas, or in other compact spaces



Image: Space-Saving Foldable Design. This image illustrates how the desk folds flat for easy storage, fitting in compact spaces like behind doors or under furniture.

Versatile Placement

The lightweight design allows for easy relocation, making it suitable for various environments such as living rooms, bedrooms, or study rooms. Its compact footprint is ideal for small spaces.



Image: Designed for Various Scenes. This collage shows the desk being used in a living room, bedroom, and study room, highlighting its versatility.

MAINTENANCE

The desk features a smooth, waterproof, and stain-resistant desktop surface. For cleaning, simply wipe with a damp cloth. Avoid using abrasive cleaners or harsh chemicals, which may damage the finish.

TROUBLESHOOTING

- **Desk Wobbles:** If the desk feels unstable or wobbles, ensure that all X-shaped metal frame components are fully extended and securely locked into their operating positions. Check that the desk is placed on a flat and even surface.
- **Difficulty Folding/Unfolding:** Ensure no obstructions are present. Refer to the safety caution regarding finger placement during folding. Apply gentle, even pressure.

- **Damaged Parts:** If any parts appear damaged upon arrival or during use, do not attempt to force assembly or use. Contact customer support for assistance.

SPECIFICATIONS

Brand	Yaheetech
Model Number	MM-00149828
Assembled Dimensions (L x W x H)	106.5 cm L x 60.5 cm W x 90.5 cm H (41.93" L x 23.82" W x 35.63" H)
Folded Dimensions (L x W x H)	107 cm L x 86.5 cm W x 4 cm H (42" L x 34" W x 2" H)
Tabletop Dimensions (L x W)	80 cm L x 50 cm W (31.5" L x 19.7" W)
Shelf Dimensions (L x W)	80 cm L x 12 cm W (31.5" L x 4.7" W)
Tabletop Height	74.5 cm (29.3")
Maximum Weight Capacity (Total)	60 kg / 132 lb
Maximum Weight Capacity (Tabletop)	50 kg / 110 lb
Maximum Weight Capacity (Shelf)	10 kg / 22 lb
Item Weight	10.77 kg / 23.74 lb
Materials	Particle Board, Powder-coated Steel
Color	Natural Wood
Special Feature	Foldable

WARRANTY AND SUPPORT

Information regarding product warranty and customer support was not available in the provided product data. Please refer to the product packaging or the manufacturer's official website for details on warranty coverage and how to contact customer support.

