

HOSTACK 71" Kitchen Pantry Storage Cabinet

HOSTACK 71" Tall Kitchen Pantry Storage Cabinet with Charging Station User Manual

Model: 71" Kitchen Pantry Storage Cabinet

1. INTRODUCTION

Thank you for purchasing the HOSTACK 71" Tall Kitchen Pantry Storage Cabinet with Charging Station. This manual provides essential information for the safe assembly, operation, maintenance, and troubleshooting of your new furniture. Please read these instructions carefully before beginning assembly and retain them for future reference.



Image 1.1: The HOSTACK 71" Tall Kitchen Pantry Storage Cabinet, showcasing its design and storage capabilities in a home environment.

2. SAFETY INFORMATION

To ensure safe use of this product, please observe the following guidelines:

- Always assemble the product on a soft, clean surface to prevent scratches.
- Ensure all parts are securely fastened before use. Periodically check and re-tighten fasteners as needed.

- Do not overload shelves or drawers. Refer to the specifications section for weight limits.
- **Anti-Tipping Device:** An anti-tipping device is included to prevent accidental tipping. It is crucial to install this device securely to a wall stud according to the assembly instructions. Failure to do so may result in serious injury.
- Keep children and pets away from the assembly area.
- For the integrated charging station, use only with compatible devices and ensure the power switch is off when not in use. Do not exceed the rated electrical capacity.



Image 2.1: Detail of the anti-tipping device, black metal handles, and X-shaped barn doors.

3. PACKAGE CONTENTS

Your HOSTACK Kitchen Pantry Storage Cabinet will be shipped in two separate packages, which may arrive on different days. Please ensure you have received both packages and all components are present and undamaged before beginning assembly.

The packages should contain:

- 1x Farmhouse Pantry (main furniture components)
- 1x Accessories Bag (hardware, screws, tools, anti-tipping device)
- 1x Instructions Manual (detailed assembly guide)

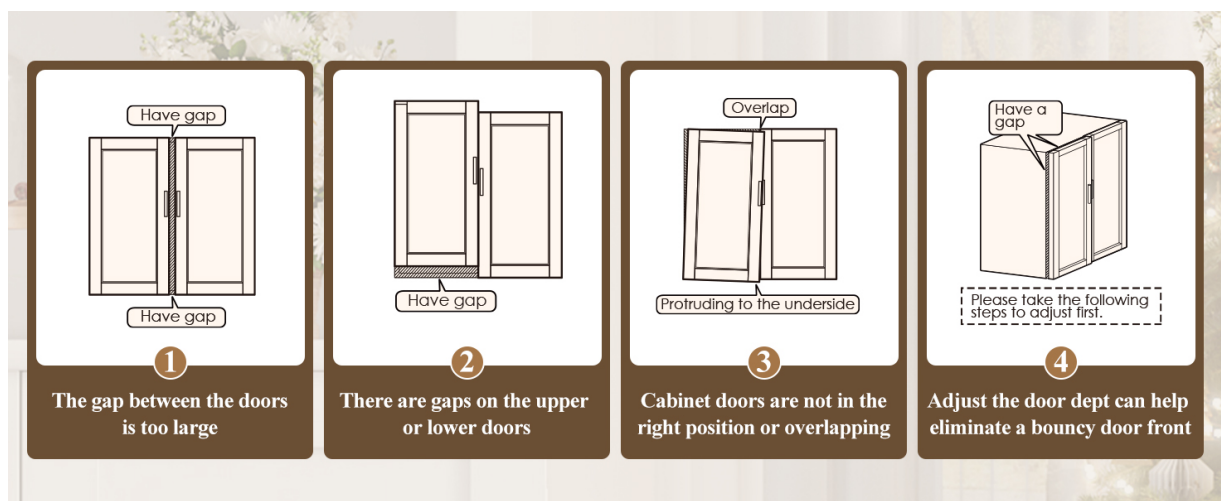


Image 3.1: Illustration indicating the product ships in two boxes and recommends two adults for assembly.

4. ASSEMBLY INSTRUCTIONS

Detailed, step-by-step assembly instructions are included in the accessories bag. Please follow them carefully. For optimal safety and ease of assembly, it is highly recommended that **two adults** perform the assembly due to the product's size and weight.

General Assembly Tips:

- Identify all parts and hardware before starting. Each piece is typically labeled.
- Use the provided tools or your own appropriate tools. Do not overtighten screws.
- Install the anti-tipping device as instructed to secure the cabinet to a wall.



Image 4.1: Detailed dimensions and internal layout of the HOSTACK Kitchen Pantry Storage Cabinet, showing cabinet and drawer sizes.

5. OPERATING INSTRUCTIONS

5.1. Charging Station

The cabinet features a built-in charging station for convenient power access. It includes:

- 2 AC Outlets (120V/12A)
- 2 USB Ports (5V/2A)
- 1 On-Off Switch

To use, plug the cabinet's power cord into a wall outlet. Use the red on-off switch to control power to the outlets and USB ports. Always turn the switch off when the charging station is not in use or when connecting/disconnecting devices.



Image 5.1: Detail of the integrated charging station, showing the AC outlets, USB ports, and power switch.

5.2. Adjustable Shelves

The cabinet includes adjustable shelves within its compartments, allowing you to customize storage space. To adjust a shelf:

1. Empty the shelf of all contents.
2. Remove the shelf support pins from their current holes.
3. Reinsert the shelf support pins into the desired new holes, ensuring they are level.
4. Place the shelf back onto the support pins.

Spacious Storage for Multi-purpose



Image 5.2: Overview of the cabinet's storage capacity, highlighting the 55" wide countertop, three drawers, and six cabinets with adjustable shelves.

5.3. Storage Drawers

The cabinet features three deep drawers for organizing smaller items. These drawers are designed for smooth operation. To open, gently pull the handle. To close, push until fully seated. Avoid forcing drawers open or closed.



Image 5.3: Detail of the three large drawers, demonstrating their depth and storage potential for kitchen utensils or other small items.

6. MAINTENANCE

To maintain the appearance and longevity of your cabinet:

- Wipe surfaces with a soft, damp cloth. Avoid harsh chemicals or abrasive cleaners.
- For spills, clean immediately to prevent staining or damage to the finish.
- Periodically check all hardware connections and tighten if necessary.
- Keep the cabinet away from direct sunlight and excessive moisture.

7. TROUBLESHOOTING

7.1. Door Alignment Issues

If cabinet doors appear misaligned, have gaps, or overlap, adjustments can be made using the hinges.

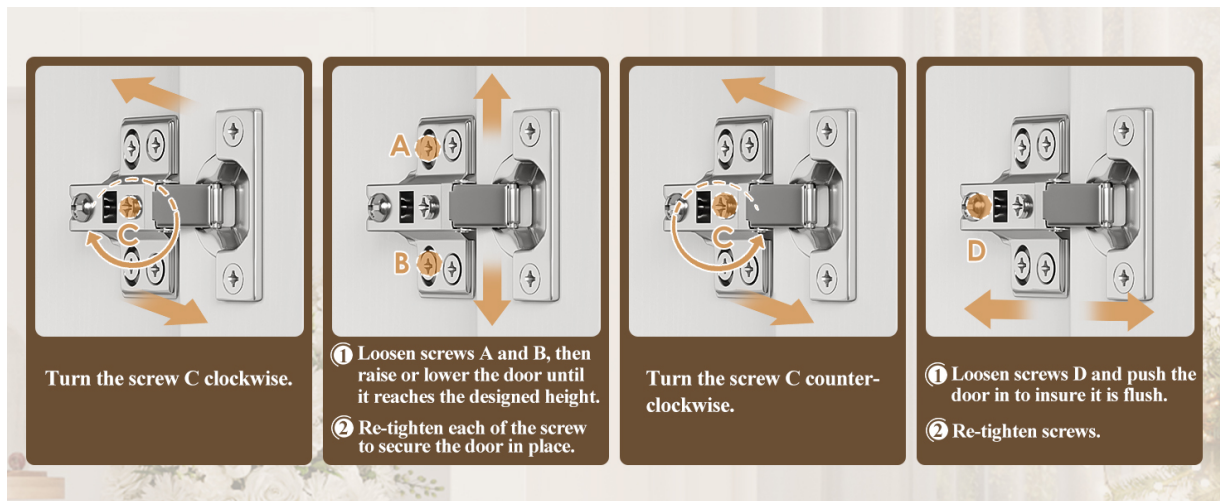


Image 7.1: Common door alignment problems that can be corrected with hinge adjustments.

Refer to the detailed hinge adjustment instructions provided in the assembly manual. Generally, hinge adjustments involve:

- **Adjusting Depth (Screw C):** Turn screw C clockwise to pull the door closer to the cabinet frame, or counter-clockwise to move it further out.
- **Adjusting Height (Screws A & B):** Loosen screws A and B, then raise or lower the door to the desired height. Re-tighten screws.
- **Adjusting Side-to-Side (Screw D):** Loosen screw D, push the door to ensure it is flush, then re-tighten screw D.



Image 7.2: Guide for adjusting cabinet hinges to correct door alignment.

8. SPECIFICATIONS

Feature	Detail
Brand	HOSTACK
Model Name	55" Wide Kitchen Hutch Cabinet
Product Dimensions	15.7"D x 55.12"W x 71"H
Item Weight	71.6 pounds
Material	Engineered Wood

Color	Black
Number of Shelves	7
Number of Drawers	3
Weight Limit	275 Pounds
Charging Station	2 AC Outlets (120V/12A), 2 USB Ports (5V/2A), On-Off Switch
Assembly Required	Yes (Two adults recommended)

9. WARRANTY AND SUPPORT

This product comes with a manufacturer's warranty. For specific warranty details, please refer to the documentation included with your purchase or contact HOSTACK customer service. If you encounter any issues during assembly or use, or if you have questions about your product, please reach out to the seller or manufacturer for assistance.

Contact Information: Please refer to your purchase receipt or the product packaging for the most current customer support contact details.