

[Manuals.plus](#) /

> [Ufesa](#) /

> Ufesa Ion Plasma Lux Hair Dryer User Manual

Ufesa Ion Plasma Lux

Ufesa Ion Plasma Lux Hair Dryer User Manual

Model: Ion Plasma Lux (60308017)

1. IMPORTANT SAFETY INSTRUCTIONS

Please read all instructions carefully before using the appliance and keep them for future reference. Failure to follow these instructions may result in electric shock, fire, or serious injury.

- **Water Hazard:** Do not immerse the appliance in water or use it near bathtubs, showers, basins, or other vessels containing water.
- **Heat Hazard:** Keep the appliance away from hot surfaces to prevent damage and potential burns.
- **Children:** This appliance is not intended for use by children. Keep it out of their reach at all times.
- **Power Supply:** Ensure the voltage indicated on the appliance corresponds to your local mains voltage before connecting.
- **Damage:** Do not use the appliance if the cord or plug is damaged, or if it is not working correctly. Contact customer support for repair.
- **Maintenance:** Do not attempt to repair the appliance yourself. Refer all servicing to qualified personnel.

2. PRODUCT OVERVIEW

The Ufesa Ion Plasma Lux is a professional-grade hair dryer designed for fast drying and hair protection. It features advanced technology for optimal performance and hair health.



Figure 1: Ufesa Ion Plasma Lux Hair Dryer with included magnetic accessories.

Key Features:

- **Digital Motor:** High-speed 110,000 rpm motor for ultra-fast drying.
- **Dual Heat Protect Technology:** Intelligent sensor regulates air temperature in real-time to prevent overheating and minimize heat damage.
- **Ion Plasma Care System:** Dual negative and positive ion generator reduces static, balances hair's natural pH, and enhances treatment absorption for shine and hydration.
- **Digital Display:** Clear screen to visualize speed, temperature, and cold air mode settings.

- **Magnetic Accessories:** Includes a magnetic concentrator and diffuser for easy attachment and styling versatility.
- **Ultra-Silent Design:** Anti-resonance technology significantly reduces motor noise.
- **Detachable Filter:** Magnetic filter for easy cleaning and maintenance.

3. SETUP

1. **Unpacking:** Carefully remove the hair dryer and all accessories from the packaging. Retain packaging for storage or future transport.

2. **Attaching Accessories:**

The Ufesa Ion Plasma Lux comes with magnetic concentrator and diffuser attachments. To attach, simply align the accessory with the front nozzle of the hair dryer; the magnets will secure it in place. To remove, gently pull the accessory away from the nozzle.

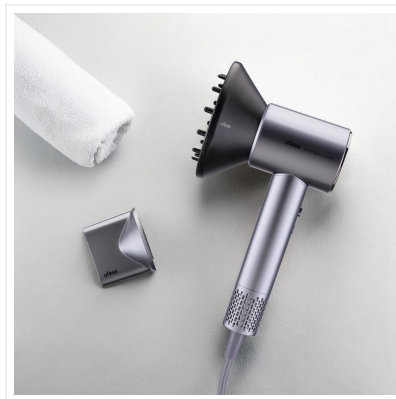


Figure 2: Hair dryer with concentrator.



Figure 3: Hair dryer with diffuser.

3. **Power Connection:** Plug the power cord into a suitable electrical outlet (220V AC).

4. OPERATING INSTRUCTIONS

The Ufesa Ion Plasma Lux offers intuitive controls for customized drying.







Figure 4: Control panel and digital display.

1. **Power On/Off:** Locate the power button (usually marked with 'I/O' or a similar symbol). Press once to turn on, press again to turn off.
2. **Adjusting Speed:** The hair dryer has 2 speed settings. Use the speed control button to cycle through the available speeds. The current speed will be displayed on the digital screen.
3. **Adjusting Temperature:** The hair dryer features multiple temperature settings. Use the temperature control button to select your desired heat level. The digital display will show the selected temperature. The Dual Heat Protect technology will automatically adjust the air temperature to prevent damage.
4. **Cold Air Mode:** Activate the cold air function for setting your hairstyle and adding shine. This mode is typically activated by a dedicated button (often marked with a snowflake symbol).
5. **Ion Plasma Care:** The integrated Ion Plasma Care system works automatically to reduce frizz and enhance hair's natural shine and hydration during use.

5. MAINTENANCE

Regular maintenance ensures optimal performance and extends the life of your hair dryer.

1. Cleaning the Air Filter:

The Ufesa Ion Plasma Lux features a magnetic detachable air filter at the rear of the appliance. It is recommended to clean this filter regularly to prevent dust and hair buildup, which can affect performance and motor life.

- Ensure the hair dryer is unplugged and completely cool before cleaning.
- Gently pull the magnetic filter cover to detach it.
- Use a soft brush or a dry cloth to remove any accumulated dust or lint from the filter mesh.
- Reattach the filter cover, ensuring it clicks securely into place.





Figure 5: Detachable magnetic air filter.

2. General Cleaning:

- Wipe the exterior of the hair dryer with a soft, damp cloth. Do not use abrasive cleaners or solvents.
- Ensure no moisture enters the air vents or electrical components.

3. **Storage:** Store the appliance in a cool, dry place, away from direct sunlight and moisture. Do not wrap the power cord tightly around the appliance, as this can damage the cord.

6. TROUBLESHOOTING

If you encounter any issues with your Ufesa Ion Plasma Lux hair dryer, please refer to the following common solutions:

Problem	Possible Cause	Solution
Appliance does not turn on.	No power supply; power cord or plug damaged; internal fault.	Check if the power cord is securely plugged into a working outlet. Inspect the cord and plug for any visible damage. If damaged, discontinue use and contact customer support.
Airflow is weak or inconsistent.	Air filter is blocked with dust or hair.	Unplug the appliance and allow it to cool. Clean the magnetic detachable air filter as described in the Maintenance section.
Hair feels dry or damaged after use.	Incorrect temperature setting; holding the dryer too close to hair; prolonged exposure to high heat.	Ensure you are using the appropriate temperature setting for your hair type. Utilize the Dual Heat Protect technology and avoid holding the dryer in one spot for too long. Consider using the cold air function to finish.
Temperature or speed settings change unintentionally.	Accidental button press during handling.	Be mindful of button placement during use. Adjust grip if necessary to avoid accidental presses.
Unusual noise or smell.	Internal component issue; foreign object in airflow.	Immediately unplug the appliance and discontinue use. Contact customer support for assistance. Do not attempt to open or repair the unit.

7. SPECIFICATIONS

Brand	Ufesa
Model Name	Ion Plasma Lux
Model Number	60308017
Power	1600 Watts
Voltage	220 Volts (AC)
Motor Speed	110,000 rpm
Special Features	Ionic Technology, Temperature Sensor, Digital Display, Ultra-Silent Design
Number of Speeds	2
Included Components	Magnetic Concentrator, Magnetic Diffuser
Dimensions (DxWxH)	9.5 cm x 22.5 cm x 7.5 cm
Hair Type Compatibility	All types
Country of Origin	China

8. WARRANTY AND SUPPORT

For warranty information, please refer to the warranty card included with your product or visit the official Ufesa website. Keep your proof of purchase for any warranty claims.

If you require further assistance, have questions about your product, or need to report a fault, please contact Ufesa customer support through their official channels. Contact details can typically be found on the Ufesa website or in the product packaging.

Ufesa Official Website: www.ufesa.es

