

[Manuals.plus](#) /

› [Keyluv](#) /

› Keyluv Full Bed Frame User Manual

## Keyluv KLVB-UF-047

# Keyluv Full Bed Frame User Manual

Model: KLVB-UF-047

## 1. PRODUCT OVERVIEW

---

This manual provides detailed instructions for the assembly, operation, and maintenance of your Keyluv Full Bed Frame. This bed frame features a velvet upholstered headboard with integrated RGB LED lights, hidden storage, and a charging station. It also includes two spacious under-bed storage drawers and a sturdy platform design that eliminates the need for a box spring.



Figure 1.1: Overview of the Keyluv Full Bed Frame, showcasing the upholstered headboard with LED lights, integrated shelves, and under-bed storage drawers.

## 2. SAFETY INSTRUCTIONS

---

- Always follow assembly instructions carefully. Do not skip steps or use unauthorized parts.
- Ensure all bolts and screws are securely tightened before use. Periodically check and re-tighten as needed.
- Do not exceed the maximum weight capacity of 1000 lbs.
- Keep small parts away from children during assembly to prevent choking hazards.
- Avoid placing liquids directly on the headboard's charging station or LED light area to prevent electrical hazards.
- Use only the provided power adapter for the LED lights and charging station.

## 3. SETUP AND ASSEMBLY

---

Assembly of the Keyluv Full Bed Frame typically takes approximately 45 minutes for one person. All necessary tools and parts are included in the single box shipment. It is recommended to assemble the bed frame in the room where it will be used.

### 3.1. Unpacking and Part Identification

Carefully unpack all components and lay them out on a clean, soft surface to prevent scratches. Verify that all parts listed in the packing list are present. Refer to the included assembly diagram for part identification.



Figure 3.1: Key dimensions of the Full bed frame (82.3"L x 57.1"W x 43.3"H) and its 1000 lbs weight capacity, along with a detailed view of the drawer assembly.

### 3.2. Assembly Steps

- 1. Assemble the Headboard:** Attach the side panels to the main headboard section. Ensure the hidden cubby mechanism is correctly aligned.
- 2. Install LED Lights and Charging Station:** Secure the LED light strip and charging station unit into the designated slots on the headboard. Connect the power cord.

3. **Construct the Side Rails and Footboard:** Connect the side rails to the assembled headboard and then attach the footboard.
4. **Insert Slats:** Place the wooden slats across the bed frame, ensuring they are evenly spaced and secured according to the instructions. The heavy-duty metal frame with wood slats provides robust support.
5. **Assemble and Insert Drawers:** Assemble the two storage drawers. The drawers are designed to glide smoothly on wheels for easy access. Insert them into the designated slots under the bed frame.
6. **Final Tightening:** Double-check all connections and tighten any loose bolts or screws.

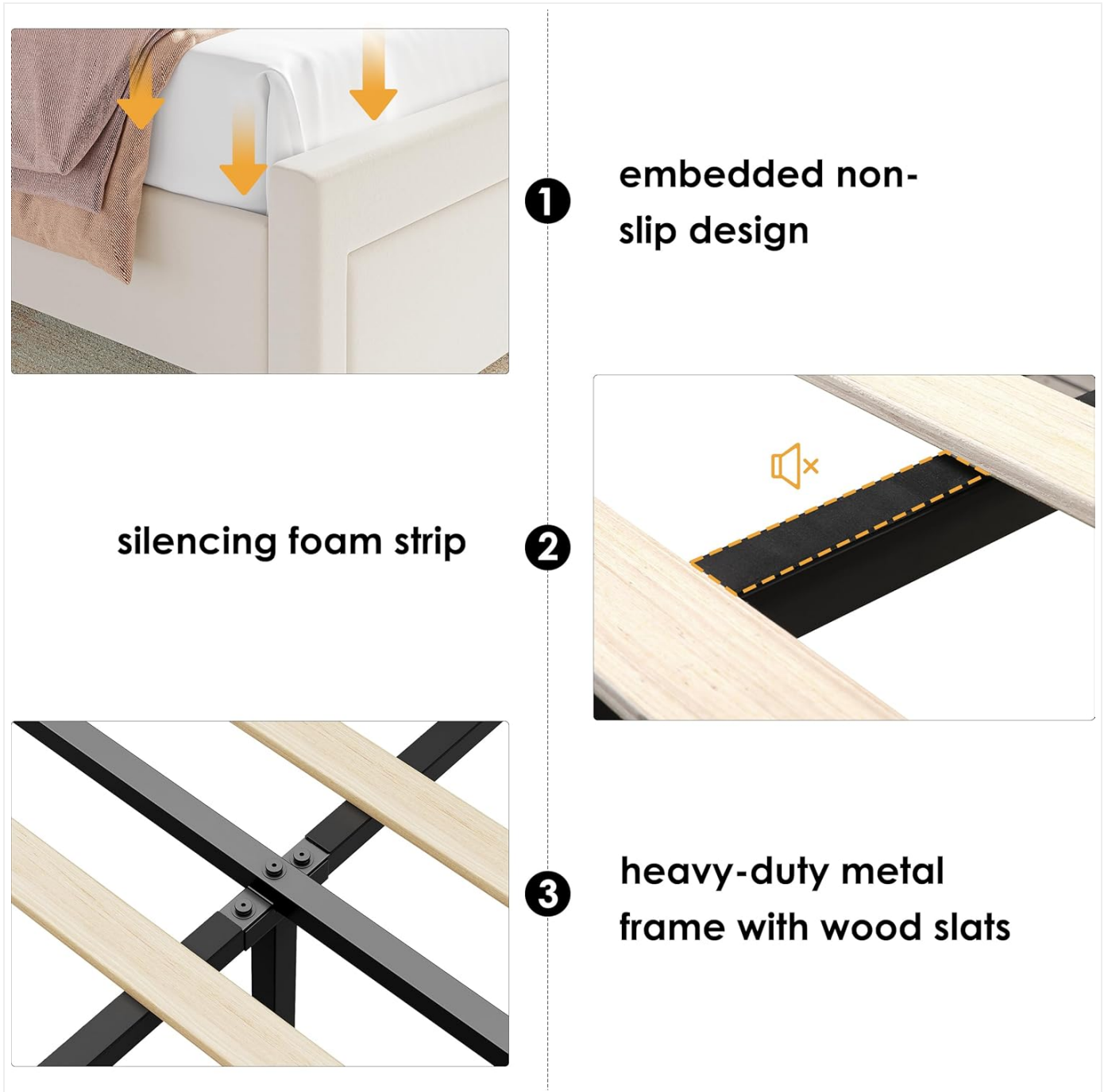


Figure 3.2: Key structural features including the embedded non-slip design for the mattress, the silencing foam strip for quiet operation, and the heavy-duty metal frame with wooden slats for robust support.

## 4. OPERATING INSTRUCTIONS

### 4.1. RGB LED Lights Operation

The integrated RGB LED lights on the headboard offer customizable ambiance. They can be controlled via an application

(APP) or a remote control (if included). The lights are dimmable and offer various colors and modes, including music sync and timer functions.

- **Power On/Off:** Use the designated button on the remote or within the app.
- **Color Selection:** Choose from a wide spectrum of colors.
- **Brightness Adjustment:** Dim or brighten the lights to your preference.
- **Mode Selection:** Cycle through various lighting modes (e.g., static, fade, flash, music sync).
- **Timer Function:** Set a timer for the lights to automatically turn off.



Figure 4.1: The headboard's RGB LED lights in operation, highlighting features such as APP or remote control, dimmable settings, music sync mode, timer function, and multi-color options.

## 4.2. Charging Station Usage

The headboard features a built-in charging station with multiple ports for convenience. This allows you to charge your electronic devices directly from your bed.

- **USB Ports:** The charging station includes 3 USB ports.
- **Type-C Port:** One Type-C port is available for compatible devices.
- **Power Cord:** The charging station is powered by a 6.2-foot power cord. Ensure it is plugged into a functional power outlet.



Figure 4.2: Close-up view of the headboard's charging station, showing 3 USB ports, 1 Type-C port, and the 6.2-foot power cord. Also visible are the storage shelves and the hidden cubby space.

### 4.3. Storage Features

The bed frame offers ample storage solutions to help keep your bedroom organized.

- **Headboard Storage Shelves:** Open shelves on either side of the headboard provide convenient space for books, decor, or personal items.
- **Hidden Cubby:** A discreet hidden storage compartment is integrated into the headboard, ideal for stowing away valuables or clutter.

- **Under-bed Storage Drawers:** Two large drawers are located under the bed frame. These drawers are on wheels, allowing for smooth and easy access to store bedding, clothing, or other belongings.



Figure 4.3: The two spacious under-bed storage drawers, demonstrating their capacity and smooth operation on wheels.

## 5. MAINTENANCE

- **Cleaning the Upholstery:** For general cleaning, gently vacuum the velvet upholstery with a soft brush attachment. For spills, blot immediately with a clean, dry cloth. Do not rub. For stubborn stains, consult a professional upholstery cleaner.
- **Frame Inspection:** Periodically inspect all bolts and screws to ensure they remain tight. Re-tighten as necessary to maintain stability and safety.
- **LED Lights:** The LED lights are designed for long-term use and typically do not require maintenance. If issues arise, check the power connection.
- **Drawer Maintenance:** Keep the drawer tracks free of dust and debris to ensure smooth operation.

## 6. TROUBLESHOOTING

Problem	Possible Cause	Solution
Bed frame feels wobbly.	Loose bolts or screws.	Check and tighten all assembly hardware.
LED lights not working.	Power cord disconnected; remote control battery low; app connection issue.	Ensure power cord is securely plugged in. Replace remote battery. Re-pair app with LED controller.
Charging station not providing power.	Power cord disconnected; device not compatible; faulty cable.	Verify power cord is plugged in. Test with a different device and charging cable.
Drawers are difficult to open/close.	Debris in tracks; misaligned.	Clean drawer tracks. Ensure drawers are properly seated on their wheels.

## 7. SPECIFICATIONS

Feature	Detail
Model Number	KLVB-UF-047
Size	Full
Product Dimensions (L x W x H)	82.3" x 57.1" x 43.3"
Color	Beige
Finish Type	Upholstered (Velvet)
Weight Capacity	1000 lbs
Item Weight	110 Pounds
Included Components	Drawer, Headboard, LED Lights, Slat, Storage Box
Assembly Required	Yes
Recommended Mattress Height	8"-12" (no box spring needed)



Figure 7.1: Illustration of recommended mattress height (8"-12") for optimal fit and comfort with the bed frame, indicating no box spring is needed.

## 8. WARRANTY AND SUPPORT

For warranty information or technical support, please contact Keyluv customer service. Details can typically be found on the product packaging or the official Keyluv website. Please have your model number (KLVB-UF-047) and purchase date ready when contacting support.

**Customer Support:** For assistance, please refer to the contact information provided with your purchase or visit the [Keyluv Store on Amazon](#).