

Manuals+

[Q & A](#) | [Deep Search](#) | [Upload](#)

manuals.plus /

- › [APUS](#) /
- › [APUS RV Tankless Water Heater \(Model AP-AWH-RV10B-NEW\) Instruction Manual](#)

APUS AP-AWH-RV10B-NEW

APUS RV Tankless Water Heater Instruction Manual

Model: AP-AWH-RV10B-NEW

Brand: APUS

1. PRODUCT OVERVIEW

The APUS RV Tankless Water Heater provides on-demand hot water for recreational vehicles. This unit features a 68,000 BTU output, delivering 3.9 gallons per minute (GPM) of hot water. Designed for efficiency and reliability, it operates on propane gas and a 12V DC power supply, making it suitable for various RV applications, including high-altitude environments.



Image 1.1: The APUS RV Tankless Water Heater, showing the main unit, wired remote controller, and included shower head.

2. SAFETY INFORMATION

Before installation or operation, read and understand all safety instructions. Failure to follow these instructions may result in property damage, serious personal injury, or death. Installation and service must be performed by a qualified technician.

- **Flame-out Protection:** Automatically shuts off gas supply if the flame extinguishes.
- **Leak Protection:** Detects and prevents gas or water leaks.
- **Freeze Protection:** Activates to prevent freezing in cold temperatures.
- **Overheat Prevention:** Monitors water temperature to prevent overheating.
- **High Water Pressure Protection:** Equipped with a 150 PSI pressure relief valve.
- Do not operate this appliance near flammable materials or spray aerosol near the appliance.
- Do not store chemicals or flammable materials near the water heater.
- Do not operate with panels, cover, or guards removed.
- The flue terminal must always vent directly to outdoors.

3. PACKAGE CONTENTS

Verify that all items are present in the package:

- Tankless water heater x 1
- Wired Controller x 1
- Instruction manual x 1
- Assembly pack x 1
- Shower head pack x 1
- Hose pack x 1

4. INSTALLATION GUIDE

This section outlines the steps for installing your APUS RV Tankless Water Heater. Ensure all safety precautions are followed.

4.1 Pre-Installation

- Turn off the propane gas supply to your RV.
- Turn off the water supply to your RV and drain any existing water heater tank.
- Carefully remove the old water heater unit from its compartment.

4.2 Physical Installation

The APUS RV Tankless Water Heater measures 15 x 15 x 14.18 inches. It is designed to fit most RV installation spaces and can replace common 6-gallon tank water heaters. Minor modifications to the opening may be required for a precise fit.



Image 4.1: Dimensions of the APUS RV Tankless Water Heater for installation reference.

1. Insert the new APUS water heater into the prepared opening on your RV's exterior.
2. Secure the unit using the provided mounting screws.
3. Apply sealant around the door frame to ensure a watertight seal.

4.3 Connecting Pipes

The unit features standard NPT fittings for water and gas connections.

- **Water Inlet:** NPT 1/2"
- **Water Outlet:** NPT 1/2"
- **Gas Inlet:** NPT 5/8" UNF

1. Remove the plugs from the water inlet and outlet connectors.
2. Wrap PTFE tape around the threads of the water inlet and outlet pipes. **Do not use PTFE tape on the gas inlet.**
3. Connect the water inlet pipe to the unit.
4. Connect the water outlet pipe to the unit.
5. Connect the gas inlet pipe to the unit.

HIGH SPEED MOTOR BRUSHLESS DC FAN

Ultra-Quiet & Stable Airflow

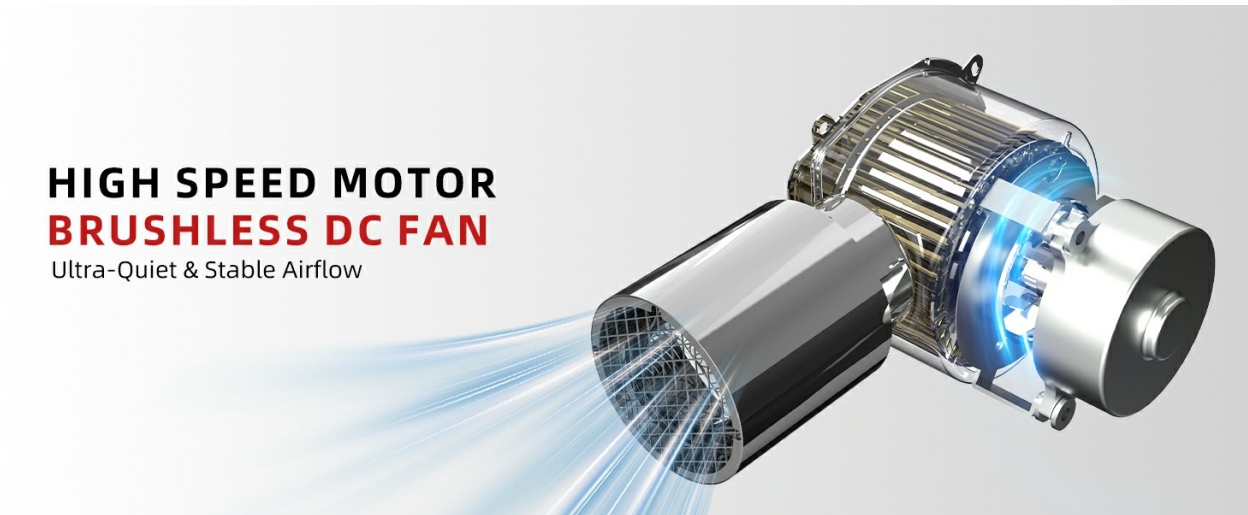


Image 4.2: Diagram illustrating the connection points for water, gas, and electrical wiring.

4.4 Connecting Wiring

The water heater requires a 12V DC power connection and wiring for the multi-function controller.

- Connect the red wire from the water heater to the +12V RV battery (positive).
- Connect the black wire from the water heater to the -12V RV battery (ground).
- Connect the blue wires from the remote controller to the corresponding blue wires on the water heater.
- Secure the line controller base in the desired interior location and attach the remote control.

OXYGEN-FREE COPPER HEAT EXCHANGER

Rapid Heat and Making
a energy-efficient option

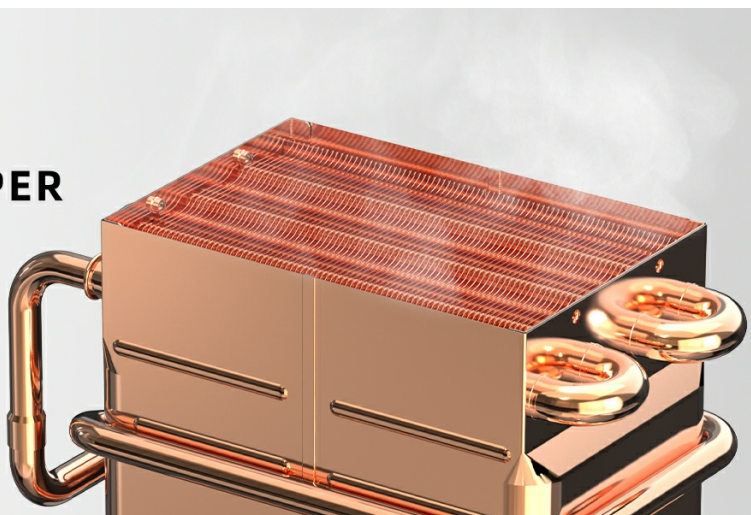


Image 4.3: The smart remote controller for adjusting temperature and monitoring the system.

4.5 Installation Video

Video 4.1: Official APUS video demonstrating the installation process for the tankless RV water heater.

5. OPERATING INSTRUCTIONS

The APUS RV Tankless Water Heater provides instant hot water with precise temperature control.

5.1 Initial Startup

1. Ensure all gas and water connections are secure and leak-free.
2. Turn on the RV's main water supply.
3. Open a hot water faucet in your RV to purge air from the water lines.
4. Turn on the propane gas supply.
5. Press the power button on the remote controller to turn on the water heater.

5.2 Temperature Control

Use the wired remote controller to set your desired water temperature.

- The temperature can be set between 95°F and 124°F.
- Use the up and down arrows on the controller to adjust the temperature.
- The controller displays the current water temperature and operating status (flame, fan, water flow).
- Switch between Celsius and Fahrenheit using the dedicated button.

5.3 High-Altitude Operation

This water heater is designed to operate efficiently at altitudes up to 9,800 feet (2,987 meters). The high-performance fan and advanced combustion technology ensure reliable hot water supply in various environments.

HIGH ALTITUDE READY

Reliable Hot Water Even at 9,800 ft Elevation



Image 5.1: The water heater is designed for efficient operation at high altitudes.

6. MAINTENANCE

Regular maintenance ensures the longevity and efficient operation of your water heater.

- **Oxygen-Free Copper Heat Exchanger:** The unit features an oxygen-free copper heat exchanger for efficient heat transfer and durability, resisting corrosion.
- **Freeze Protection:** The integrated freeze protection system helps prevent damage in cold weather. For extended storage in freezing conditions, it is recommended to winterize the RV's water system according to manufacturer guidelines.
- **Exterior Cleaning:** Keep the exterior door and vents clear of debris to ensure proper airflow.

POWERFUL CORE COMPONENTS

Built for All Roads, Built for All Road and Every Hot Shower

OXYGEN-FREE COPPER EXCHANGER

Fast Efficient Heat



PRESSURE RELIEF VALVE

For Ultimate Safety



BRUSHLESS DC FAN

Rapid Air Exchange



3-STAGE BURNER SYSTEM

Smart Flame Saves Energy

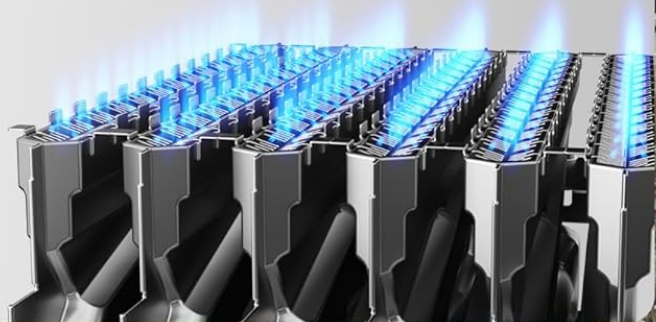


Image 6.1: Internal components, highlighting the oxygen-free copper heat exchanger for durability.

7. TROUBLESHOOTING

If you encounter issues with your water heater, refer to the following common troubleshooting steps:

- **No Hot Water:** Check propane supply, water supply, and 12V DC power connection. Ensure the controller is on and displaying a flame icon.
- **Inconsistent Temperature:** Verify water flow rate is within the recommended range. Ensure the gas pressure is adequate.
- **Error Codes:** Refer to the detailed instruction manual for specific error codes displayed on the remote

controller.

- **Gas Leak:** If you suspect a gas leak (e.g., smell of gas, bubbling with soapy water at connections), immediately turn off the gas supply and contact a qualified technician.

8. SPECIFICATIONS

Feature	Specification
Brand	APUS
Model Number	AP-AWH-RV10B-NEW
Product Dimensions	14.18"W x 15"H
Color	Black
Voltage	12 Volts (DC)
Maximum Flow Rate	3.9 Gallons Per Minute
Maximum Temperature	124 Degrees Fahrenheit
Heat Output	68,000 British Thermal Units
Efficiency	High Efficiency
Mounting Type	Door Mount
Special Features	Anti-Freezing Protection, Dry Combustion Protection, Flame Failure Protection, High Water Pressure Protection, LED Display

9. WARRANTY AND SUPPORT

For warranty information and technical support, please refer to the contact details provided in the included instruction manual or visit the official APUS website.