

[Manuals.plus](#) /

› [YESYAMO](#) /

› YESYAMO C8TW-2PCS 2K Solar Wireless Outdoor Security Camera User Manual

YESYAMO C8TW-2PCS

YESYAMO C8TW-2PCS 2K Solar Wireless Outdoor Security Camera User Manual

Model: C8TW-2PCS | Brand: YESYAMO

1. INTRODUCTION

Thank you for choosing the YESYAMO 2K Solar Wireless Outdoor Security Camera. This manual provides detailed instructions for the installation, operation, and maintenance of your security camera system. Please read this manual thoroughly before use to ensure proper functionality and to maximize the benefits of your device.



Image: Two YESYAMO C8TW-2PCS solar-powered outdoor security cameras, white in color, with integrated solar panels and dual antennas.

2. PRODUCT OVERVIEW

2.1 Package Contents

- YESYAMO GX8S Surveillance Camera (Quantity: 2 for this package)
- Solar Panel (Quantity: 2 for this package)
- USB Cable
- Flexible Mount Bracket
- User Manual
- Mounting Screws and Wall Plugs

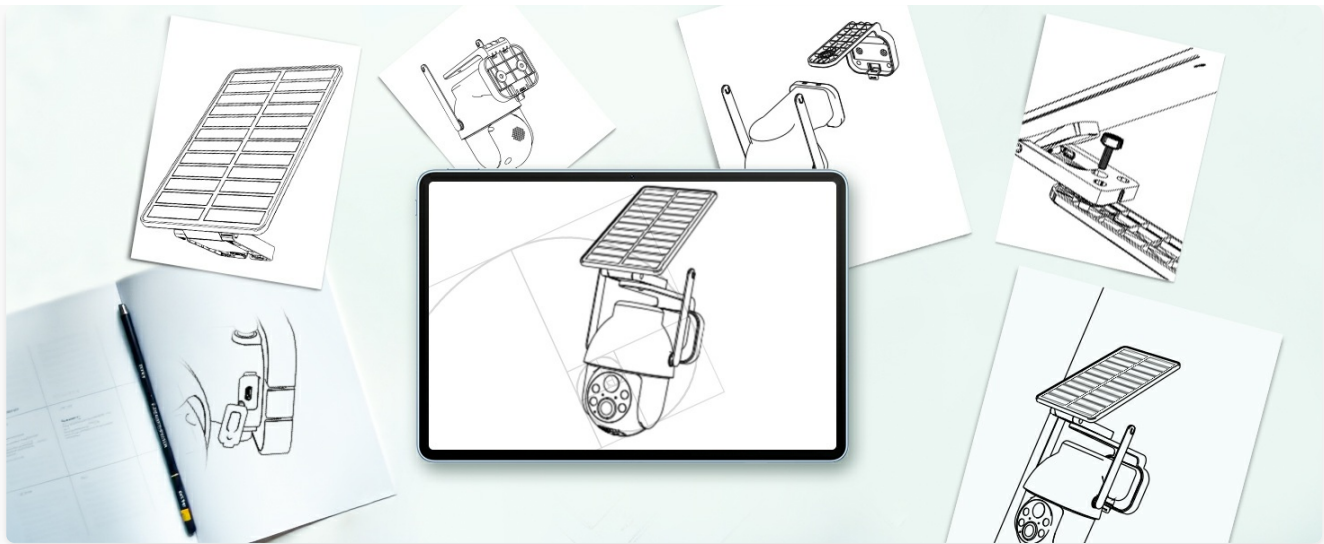


Image: The complete package contents, including the camera, solar panel, USB cable, mounting bracket, user manual, and screws.

2.2 Key Features

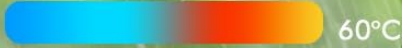
- **2.4GHz WiFi Connectivity:** Supports 2.4G WiFi networks only (5G not supported) for stable wireless connection.
- **Solar Powered & Rechargeable Battery:** Equipped with a solar panel (3M cable included) and a large-capacity rechargeable battery for continuous power.
- **360° PTZ Coverage:** Offers 355° horizontal pan and 90° vertical tilt rotation, controllable via the mobile application, ensuring comprehensive area monitoring.
- **2K QHD Resolution:** Delivers clear 2K Quad HD image quality with 5x digital zoom, providing detailed surveillance footage.
- **PIR Motion Detection & Triple Alert:** Features an upgraded smart PIR infrared sensor for accurate human motion detection, reducing false alarms. Triggers lights, an audible alarm, and sends instant notifications to your phone (within 1 second).
- **AI Intelligent Humanoid Analysis:** Advanced AI capabilities for intelligent humanoid detection.
- **Color Night Vision:** Utilizes 4 infrared night vision lights to provide ultra-clear color night vision, even in low-light conditions.
- **IP66 Weatherproof:** Certified IP66 waterproof, suitable for outdoor use in various weather conditions (-20°C to 60°C).
- **Local & Cloud Storage:** Supports Micro SD cards up to 128GB and offers a 7-day free trial for encrypted cloud storage.
- **Two-Way Audio:** Allows for real-time communication through the camera.

IP66 Étanche

Convient en extérieur dans toutes les conditions météo



-20°C



60°C

2K

2K
QHD



IP66 Étanche



PIR Détection



Rotation
à 360°



Vision Nocturne
Colorée



SD/Cloud
Stockage



Image: The camera highlighting its IP66 waterproof rating and icons representing 2K QHD, PIR detection, 360° rotation, color night vision, and SD/cloud storage.

3. SETUP INSTRUCTIONS

3.1 Physical Installation

The camera and solar panel can be installed together or separately. Ensure the solar panel receives adequate sunlight for optimal charging.

1. **Choose a Location:** Select a mounting location that provides the desired viewing angle and ensures the solar panel is exposed to direct sunlight for several hours daily.
2. **Mount the Bracket:** Use the provided screws and wall plugs to securely attach the mounting bracket to the wall or desired surface.
3. **Attach the Camera/Solar Panel:** Secure the camera and/or solar panel to the mounted bracket. Adjust the angle of the solar panel to maximize sun exposure.
4. **Connect Solar Panel:** Connect the 3-meter solar cable from the solar panel to the camera's charging port.



Image: A visual guide showing three steps for installing the camera bracket, attaching the solar panel, and connecting it to the camera.

Une Foix Installé, Pas Besoin de le Retirer
365 Jours d'Alimentation **Solaire** Continue



2M
Câble Solaire

2.4G WiFi / 5GWiFix

Image: The camera mounted outdoors with its solar panel, illustrating the 2-meter solar cable and indicating 2.4G WiFi connectivity.

3.2 App Connection

To operate your camera, you will need to download and install the companion mobile application (e.g., CloudEdge, as mentioned in customer reviews) on your smartphone.

1. **Download the App:** Search for the recommended app (e.g., "CloudEdge" or "Yes iH") in your device's app store (Google Play Store for Android or Apple App Store for iOS).
2. **Create an Account:** Open the app and follow the on-screen instructions to create a new user account.
3. **Add Device:** Select the option to add a new device. Follow the in-app prompts to connect your camera to your

2.4GHz WiFi network. This typically involves scanning a QR code displayed on your phone with the camera.

4. **Complete Setup:** Once connected, you can name your camera and configure initial settings.

Rendre la Vie Plus Pratique

Avec la dernière technologie de sécurité, YESYAMO continue de fournir des caméras de sécurité abordables et conviviales pour un usage domestique et commercial.

Nous adhérons au principe du client d'abord et de la qualité d'abord, et nous nous engageons à toujours protéger les biens familiaux et la vie privée de nos clients.



Image: A smartphone screen showing the 'Yes iH' application interface, indicating app availability for Android and iOS.

4. OPERATING INSTRUCTIONS

4.1 PTZ Control

The camera features Pan-Tilt-Zoom (PTZ) functionality, allowing you to remotely adjust its viewing angle.

- Open the live view of your camera in the app.
- Use the directional controls (usually a joystick or arrows) within the app to pan the camera horizontally (355°) and tilt it vertically (90°).
- You can also use the pinch-to-zoom gesture for 5x digital zoom.

Couverture à 360° de Tous les Coins

355° Pan & 90° Tilt, Rotation à Volonté



Image: A user's hands holding a smartphone, demonstrating the control of the camera's 355° pan and 90° tilt functions to achieve 360° coverage.

4.2 Motion Detection & Alerts

The camera is equipped with advanced motion detection capabilities to keep your property secure.

- **PIR Sensor:** The Passive Infrared (PIR) sensor detects heat signatures from moving objects, primarily humans, to minimize false alarms.
- **AI Humanoid Analysis:** The camera uses AI to specifically identify human shapes, further enhancing detection accuracy. Free human detection is included. Detection of vehicles, packages, and animals may

require a paid subscription.

- **Triple Alert System:** Upon detecting a suspicious person, the camera can activate its built-in siren, turn on its spotlight, and send an immediate notification to your smartphone.
- **Adjust Sensitivity:** You can adjust the motion detection sensitivity within the app to suit your environment and reduce unwanted alerts.



Image: An outdoor scene at night showing the camera's spotlight illuminating a person and icons for siren, light, and audio alerts, indicating a rapid response to suspicious activity.

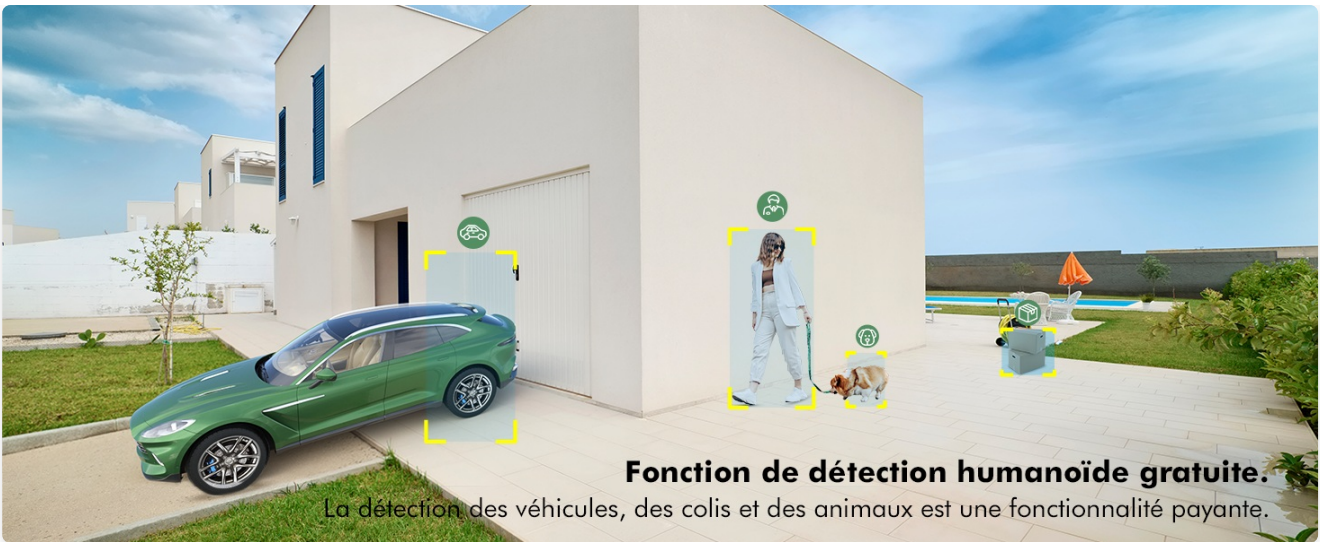


Image: An illustration showing AI detection capabilities for humans, cars, and animals, with a note that human detection is free, while vehicle, package, and animal detection are paid features.

4.3 Night Vision

The camera offers enhanced night vision capabilities for clear monitoring in low-light conditions.

- **Color Night Vision:** The 4 infrared lights can automatically activate to provide full-color video footage even in very dark environments.
- **Infrared Night Vision:** Standard black and white infrared vision is also available, offering clear images in complete darkness.



Image: A split image demonstrating the difference between 2K color night vision (left, showing a car in a lit driveway) and 2K infrared night vision (right, showing a monochrome view of a house at night).

4.4 Two-Way Audio

Communicate with visitors or deter intruders using the camera's built-in microphone and speaker.

- From the live view in the app, tap the microphone icon to speak through the camera.
- The camera's microphone will pick up audio from its surroundings, allowing you to listen in.



Image: A scene depicting a delivery person at a door, with speech bubbles indicating two-way audio communication between the user via the app and the person at the door.

4.5 Recording and Storage

Your camera supports both local and cloud storage options for recording events.

- **Micro SD Card:** Insert a Micro SD card (up to 128GB, not included) into the designated slot on the camera for local storage of recordings.
- **Cloud Storage:** The camera offers a 7-day free trial of encrypted cloud storage. After the trial, subscription plans are available for continued cloud service.
- **Event Playback:** Access recorded footage through the app's playback feature, whether stored locally or in the cloud.



Image: A close-up of the camera showing the Micro SD card slot, indicating support for cards up to 128GB (card not included).

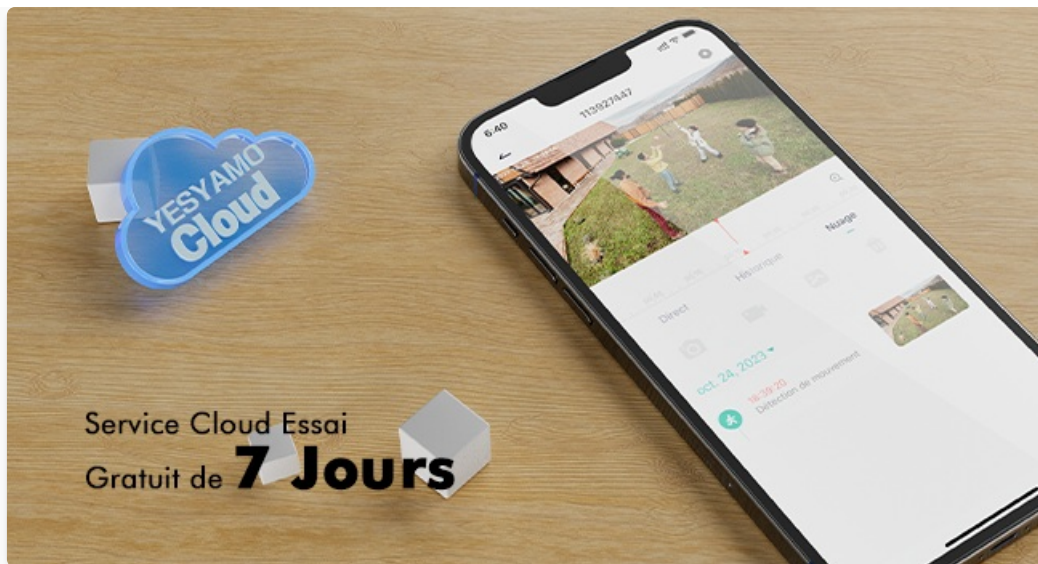


Image: A smartphone showing the cloud service interface, highlighting a 7-day free trial for cloud storage.

5. MAINTENANCE

5.1 Solar Panel Care

To ensure optimal charging efficiency, periodically clean the surface of the solar panel to remove dust, dirt, or debris that may accumulate. A soft, damp cloth is usually sufficient.

5.2 Weather Resistance

The camera is designed with an IP66 weatherproof rating, making it resistant to dust and water jets. It can operate reliably in temperatures ranging from -20°C to 60°C. While designed for outdoor use, avoid submerging the camera in water or exposing it to extreme conditions beyond its specified operating range.

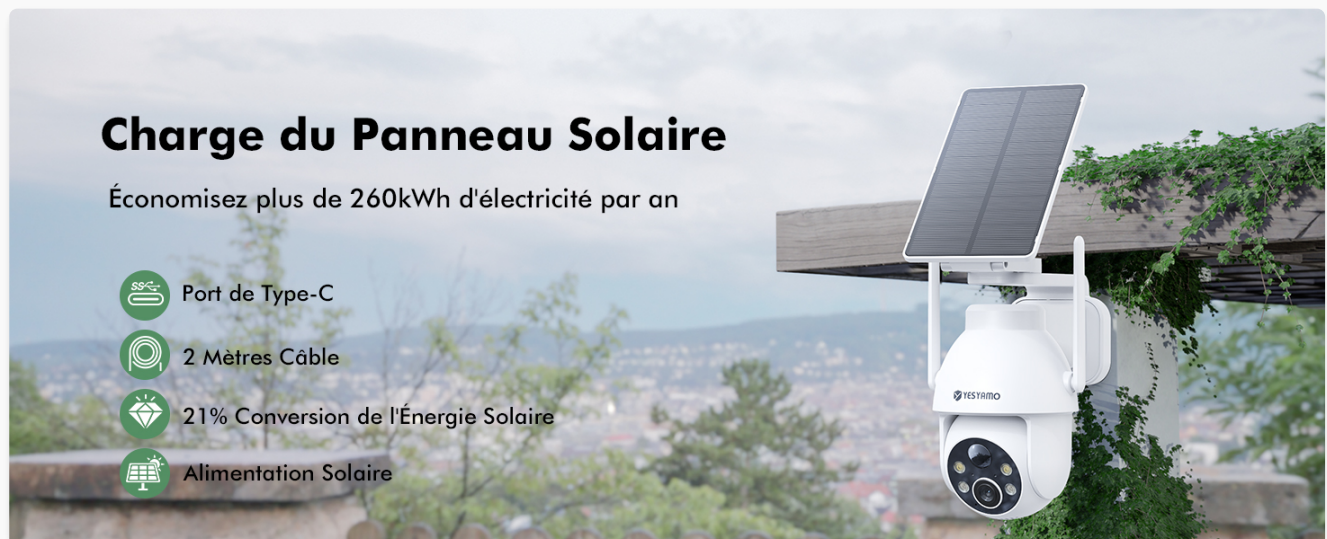


Image: The camera mounted outdoors, shown functioning under sunny, cloudy, rainy, and snowy conditions, indicating its suitability for diverse weather.

6. TROUBLESHOOTING

- **Camera Not Connecting to WiFi:** Ensure your WiFi network is 2.4GHz. Check that the camera is within range of your router. Restart both the camera and your router.
- **Poor Image Quality:** Ensure the camera lens is clean. Check your internet connection speed.

- **Solar Panel Not Charging:** Verify the solar panel is receiving direct sunlight and is free from obstructions. Clean the panel surface. Ensure the solar cable is securely connected.
- **Frequent False Alarms:** Adjust the motion detection sensitivity settings in the app. Ensure the detection zone is configured correctly to avoid triggering by irrelevant movements (e.g., passing cars on a public road if not desired).
- **No Notifications:** Check your phone's app notification settings and ensure they are enabled for the camera app. Verify the camera's motion detection is active.
- **Two-Way Audio Issues:** Ensure your phone's microphone and speaker are working. Check the app's audio settings.

7. SPECIFICATIONS

Feature	Specification
Model Name	C8TW-2PCS
Connectivity Technology	Wireless (2.4GHz Wi-Fi)
Video Recording Resolution	2K QHD (2304x1296)
Pan/Tilt Angle	355° Pan, 90° Tilt
Digital Zoom	5x
Power Source	Solar Power, Battery Power (Lithium-ion)
Water Resistance Level	IP66 (Waterproof)
Operating Temperature	-20°C to 60°C
Storage Options	Micro SD Card (up to 128GB), Cloud Storage
Special Features	Uninterrupted solar power, 2K QHD quality, Color night vision, 2.4G WiFi, PTZ control, Motion detection, Two-way audio
Compatible Devices	Smartphone (Android & iOS)
Material	ABS + PC + Metal
Voltage	5 Volts
Power	2.4 Watts

8. WARRANTY AND SUPPORT

YESYAMO is committed to providing reliable products and excellent customer service.

- **Warranty:** This product comes with a 2-year warranty.

- **Technical Support:** Lifetime technical assistance is available.
- **Online Service:** Customer support is available 24/7 online.

For any questions, technical assistance, or warranty claims, please contact YESYAMO customer support through the contact information provided in the product packaging or on the official YESYAMO website.

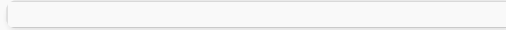


Image: Icons representing 2 years warranty, lifetime technical assistance, and 24/7 online service.

Le Service d'Abord, le Client d'Abord

2 Ans de Garantie 

 Assistance Technique à Vie

Service en Ligne 7x24 Heures 

Image: An Amazon Echo Show device displaying a live feed from the camera, with text indicating compatibility with Alexa: "Alexa, Show Me the Yard."