

AWESAFE IBEN-88BMW

AWESAFE Linux Autoradio User Manual

Model: IBEN-88BMW | Brand: AWESAFE

1. INTRODUCTION

This manual provides detailed instructions for the installation, operation, and maintenance of your AWESAFE Linux Autoradio. Please read this manual thoroughly before installation and use to ensure proper functionality and to avoid damage.

The AWESAFE Linux Autoradio features an 8.8-inch HD touch screen (1280x480 resolution) and is designed to enhance your in-car entertainment and connectivity experience while retaining original vehicle functions.

Système de commutation gratuit

La voiture d'origine peut être commutée librement avec le système Linux et les fonctions de la voiture d'origine peuvent être conservées.



Image 1.1: AWESAFE Linux Autoradio main unit installed in a vehicle dashboard.

2. COMPATIBILITY

This autoradio is specifically compatible with BMW vehicles equipped with the **CCC System** from 2003-2008. This includes:

- BMW 5 Series: E60, E61, E63, E64
- BMW 3 Series: E90, E91, E92

Important: This unit is ONLY for vehicles with the CCC system. It is NOT compatible with CIC or NBT systems.

To identify your vehicle's system, check the LVDS connector type. CCC systems typically use a 10-pin LVDS connector, while CIC systems use a 4-pin LVDS connector.

Compatible pour BMW Série 5, E60, E61, E63, E64 Série 3 E90, E91, E92 2003–2010 CCC Système



Image 2.1: Visual guide for identifying CCC vs. CIC systems based on LVDS connector and menu interface.

3. WHAT'S IN THE BOX

Upon unpacking, please verify that all the following components are included:

- AWESAFE Linux Autoradio Unit
- Connection Cables (Power harness, LVDS cable, AUX cable)
- USB Cable
- Installation Tools (Pry tool, Screwdriver)
- User Manual (This document)



Image 3.1: Overview of included components and wiring connections.

4. SETUP AND INSTALLATION

Professional installation is recommended. Ensure the vehicle's power is disconnected before beginning installation.

4.1 Pre-Installation Check

- Confirm your vehicle has the CCC system (refer to Section 2).
- Ensure your original car menu has AUX audio output settings. The product uses the AUX audio source for sound transmission. If your vehicle does not have a native AUX input, it may need to be activated or installed separately for audio functionality.

4.2 Installation Steps

Follow these general steps for installation. Specific vehicle disassembly instructions may vary and can often be found in vehicle-specific guides or online resources.

1. Carefully remove the original display unit and trim pieces using the provided pry tool.
2. Connect the new autoradio unit to the vehicle's wiring harness, including the power, LVDS, and AUX cables. Ensure all connections are secure.
3. Route the USB cable to a convenient location (e.g., glove compartment).
4. Mount the new autoradio unit into the dashboard opening.
5. Reassemble the trim pieces.

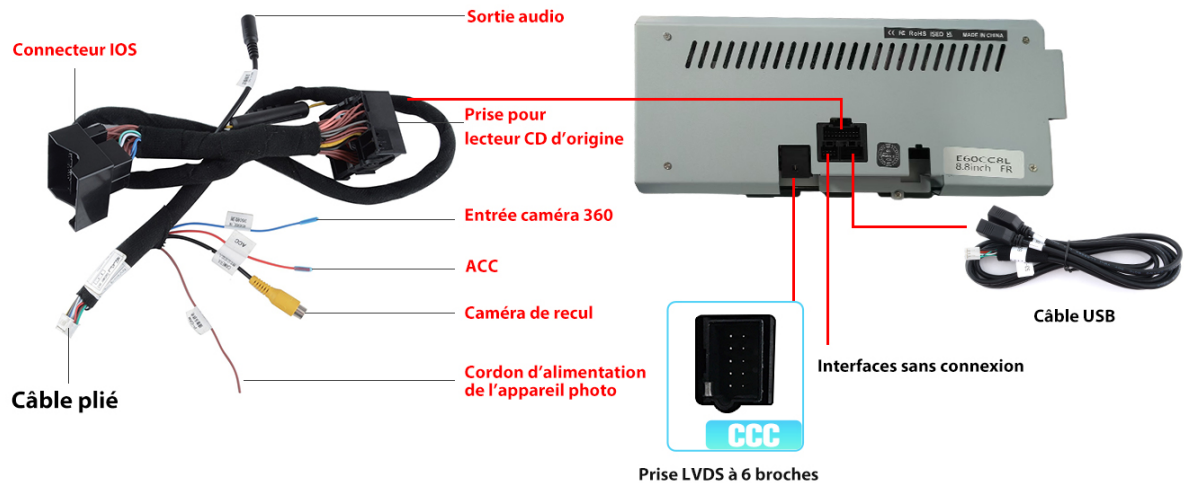


Image 4.1: Post-installation software setup steps for accessing vehicle information, adjusting resolution, and selecting AUX input.

4.3 Initial Configuration

After physical installation, perform the following software configurations:

1. **Access Vehicle Information:** Click the 'Car Info' icon to enter vehicle information settings.
2. **Factory Settings:** Navigate to 'Factory Head Unit Parameter Setting' and select 'Adaptive Resolution' to ensure optimal display. (If a camera is not installed, this step may be skipped).
3. **Select AUX Input:** In the original car menu, navigate to 'Multimedia' -> 'External devices' -> 'Tune' and select 'AUX front' or 'AUX'. This is crucial for audio output from the new unit.

5. OPERATING INSTRUCTIONS

5.1 System Switching

The autoradio allows seamless switching between the Linux system and your original vehicle's system, preserving original car functions.

Comment identifier le système de votre voiture d'origine



Image 5.1: The system supports free switching between the Linux system and the original car system, retaining original speakers, CD player, and iDrive control.

5.2 Wireless Carplay & Android Auto

Connect your smartphone wirelessly via Bluetooth for Carplay or Android Auto functionality. This allows you to access navigation, make calls, send/receive messages, and play music directly from your phone on the autoradio's screen.

- **Wireless Connection:** Pair your iPhone or Android phone via Bluetooth. The system will prompt you to enable Carplay/Android Auto.
- **Wired Connection:** Alternatively, connect your phone using the original USB cable for Carplay or Android Auto.
- **Voice Control:** Use voice commands (e.g., Siri) for hands-free operation.

CarPlay & Android Auto

Avec une connexion sans fil, vous pouvez utiliser votre smartphone avec un assistant Voix intelligente ou écran tactile où vous pouvez naviguer, passer des appels, Envoyez et recevez des messages, écoutez de la musique, etc.



Image 5.2: Carplay and Android Auto interfaces for navigation, communication, and media.

5.3 Bluetooth Connectivity

The unit supports quick Bluetooth pairing for hands-free calls and wireless music streaming.

- **Hands-Free Calls:** Make and receive calls directly from the autoradio screen. The integrated noise-canceling microphone ensures clear communication.
- **Bluetooth Music:** Stream music from your mobile phone with stable, lossless audio quality within a 10-meter range.

Appels mains libres



Musique Bluetooth



Image 5.3: Bluetooth interface for hands-free calls and music streaming.

5.4 Mirror-Link Function

The Mirror-Link function allows you to project your smartphone's screen onto the autoradio display, enabling you to view videos or images from your phone.

5.5 Navigation

Utilize the navigation features through Carplay or Android Auto. You can use online maps to search for destinations and receive turn-by-turn directions, similar to using a smartphone.

5.6 Retaining Original Vehicle Information

The system is designed to display original vehicle information such as speed, handbrake status, seatbelt warnings, fuel level, and door status on the new screen.

Conservez les informations d'origine du véhicule

Compatible avec votre système de voiture d'origine, vous pouvez afficher les informations de votre voiture d'origine sur ce nouvel écran.



Image 5.4: Display of original vehicle information on the autoradio screen.

5.7 Media Playback via WiFi

The device supports WiFi connectivity, allowing you to connect to a WiFi network or hotspot to stream online videos. You can also play videos stored on a USB device connected to the autoradio.

Note: The WiFi function is intended for streaming online videos and cannot be used to download applications or other software.

Lecture vidéo via WiFi

Cet appareil prend en charge la connexion WIFI, vous pouvez connecter le WIFI ainsi que des points d'accès, de sorte que vous pouvez regarder des milliers de vidéos en ligne et augmenter l'expérience d'utilisation de votre voiture. Vous pouvez également connecter votre appareil via USB, mettre votre vidéo téléchargée dans l'autoradio, puis la lire.

Remarque : La fonction WIFI de cet appareil est uniquement destinée à l'utilisation d'un logiciel spécifique pour lire des vidéos, et ne peut pas être utilisée pour télécharger ou utiliser d'autres logiciels.

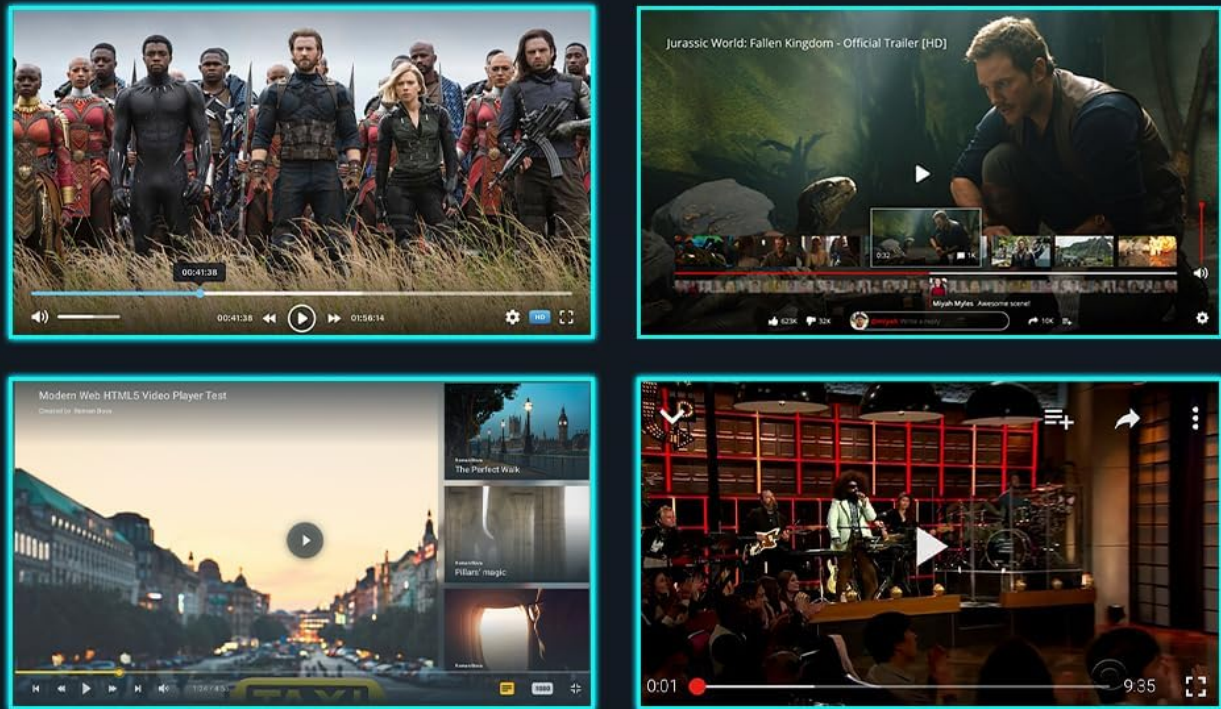


Image 5.5: Video playback via WiFi and USB.

6. MAINTENANCE

To ensure the longevity and optimal performance of your AWESAFE Linux Autoradio, follow these maintenance guidelines:

- **Cleaning:** Use a soft, dry cloth to clean the screen and exterior. Avoid abrasive cleaners or solvents that could damage the surface.
- **Temperature:** Avoid exposing the unit to extreme temperatures, both hot and cold, as this can affect performance and lifespan.
- **Software Updates:** Periodically check the manufacturer's website for any available software updates to ensure the system runs efficiently and has the latest features.
- **Cable Connections:** Ensure all cables remain securely connected to prevent intermittent issues.

7. TROUBLESHOOTING

If you encounter issues with your autoradio, refer to the following common problems and solutions:

Problem	Possible Cause	Solution
No Sound	AUX input not selected or activated in original car menu. Loose audio cable connection.	Ensure AUX is selected in your original car's audio settings (refer to Section 4.3). Check all audio cable connections. Confirm your vehicle has AUX audio output.
Screen Not Turning On	Loose power connection. Incorrect wiring.	Check all power cable connections. Verify wiring against the installation diagram.
Carplay/Android Auto Not Connecting	Bluetooth not paired. USB cable issue. Software glitch.	Ensure Bluetooth is enabled and paired. Try a different USB cable. Restart both the autoradio and your phone.
Original System Not Accessible	LVDS cable disconnected or improperly connected.	Check the 10-pin LVDS connector to ensure it is securely attached to the radio block.
WiFi Not Working	Incorrect WiFi settings. No available network.	Check WiFi settings on the unit. Ensure you are within range of a strong WiFi signal or hotspot.

If the problem persists after attempting these solutions, please contact AWESAFE customer support.

8. SPECIFICATIONS

Feature	Specification
Model Number	IBEN-88BMW
Screen Size	8.8 inches
Resolution	1280 x 480
Controller Type	Linux
Connectivity	Bluetooth, USB, Auxiliary, WiFi
Special Features	Wireless Apple CarPlay, Android Auto, Mirror-Link, Integrated Bluetooth
Compatible Devices	Smartphone, iPhone
Audio Output Mode	Stereo
Number of Channels	2
Item Weight	540 Grams

9. WARRANTY AND SUPPORT

9.1 Manufacturer's Warranty

This AWESAFE Linux Autoradio comes with a **2-year manufacturer's warranty** from the date of purchase. This warranty covers defects in materials and workmanship under normal use. It does not cover damage caused by improper installation, accident, misuse, abuse, neglect, or unauthorized modification.

9.2 Customer Support

For technical assistance, troubleshooting beyond this manual, or warranty claims, please contact AWESAFE customer support through the retailer where the product was purchased or visit the official AWESAFE website for contact information.