

## Manuals+

[Q & A](#) | [Deep Search](#) | [Upload](#)

manuals.plus /

> [Misstech](#) /

> [Misstech 4K UHD Solar Trail Camera User Manual - Model SV-TCYW](#)

## Misstech SV-TCYW

# Misstech 4K UHD Solar Trail Camera User Manual

MODEL: SV-TCYW

## 1. Introduction

This manual provides comprehensive instructions for the setup, operation, and maintenance of your Misstech 4K UHD Solar Trail Camera. Designed for game and wildlife monitoring, this camera features 4K Ultra HD video recording, 64MP photo capture, and a 0.1-second motion trigger. Its integrated solar panel ensures continuous power, making it ideal for remote outdoor use. The camera is IP66 waterproof and offers convenient control via a dedicated smartphone application.

## 2. Package Contents

Verify that all items listed below are included in your package:

- Misstech 4K UHD Solar Trail Camera Unit
- Integrated Solar Panel
- 32GB Micro SD Card
- Mounting Strap
- Screw-in Mounting Bracket
- USB Charging Cable
- Instruction Manual

## 3. Product Overview

The Misstech Solar Trail Camera is a compact and robust device designed for outdoor surveillance. It features a main camera lens, infrared sensors for night vision, and a motion detection sensor. The integrated solar panel is positioned above the camera unit to maximize sun exposure for continuous charging. The camera's housing is built to withstand various weather conditions.



Figure 3.1: Misstech 4K UHD Solar Trail Camera with integrated solar panel.

The camera unit includes an internal screen and control buttons for direct configuration and footage review. The solar panel is designed for flexible installation, allowing it to be positioned optimally for sunlight while the camera remains discreetly placed.

## 4. Setup

### 4.1 Initial Charging

Before first use, fully charge the camera's built-in rechargeable battery using the provided USB charging cable. Connect the cable to the camera's charging port (located under a waterproof seal) and to a standard USB power adapter (not included).

### 4.2 SD Card Installation

Insert the included 32GB Micro SD card into the designated slot inside the camera unit. Ensure the card is inserted correctly until it clicks into place. The camera supports up to 180 days of recording with the 32GB card.

### 4.3 Power On and Basic Settings

Open the camera's front cover to access the internal screen and control buttons. Slide the power switch to the 'ON' position. Use the navigation buttons to access the 'Settings' menu. Here you can configure:

- **Mode:** Photo, Video, or Photo+Video
- **Work Time:** Set specific operating hours
- **Photo/Video Resolution:** Adjust quality (e.g., 64MP photos, 4K UHD video)
- **Photo Burst:** Number of photos per trigger
- **Audio Recording:** Enable/disable audio for videos
- **Detection Delay:** Set interval between triggers
- **PIR Sensitivity:** Adjust motion sensor sensitivity
- **Motion Filter:** Optimize for specific movements
- **Fill Light Distance:** Adjust infrared illumination range
- **Camera Name:** Assign a unique name

#### 4.4 App Installation and Connection

Download the "Trailcam Go" app from your smartphone's app store. Enable Bluetooth on your phone and follow the in-app instructions to connect to your camera. The app allows for remote control and viewing of footage within a Bluetooth range of up to 45 feet (15 meters) for connection and up to 160 feet (50 meters) for control.

Video 4.1: Official Misstech video demonstrating the solar trail camera and phone app features. This video provides an overview of the camera's capabilities and how to use the companion app for control and footage management.

## 5. Operating Instructions

### 5.1 Motion Detection and Capture

The camera features a rapid 0.1-second trigger speed, ensuring quick capture of moving subjects. When motion is detected, the camera will record video or take photos based on your selected mode and settings.

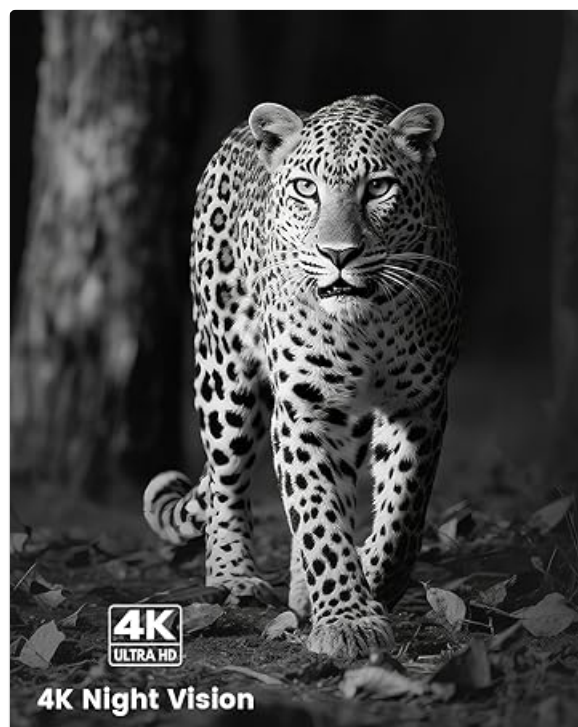


Figure 5.1: Illustration of the camera's 0.1-second fast capture speed.

## 5.2 Night Vision

Equipped with 4K ultra night vision and an f/1.6 wide aperture lens, the camera delivers clear images and videos even in low-light conditions. The infrared light source operates discreetly to avoid disturbing wildlife.



Figure 5.2: Night vision capability with f/1.6 aperture for enhanced low-light performance.

## 5.3 Footage Review and Management

Review captured photos and videos directly on the camera's built-in screen or wirelessly via the "Trailcam Go" app. The app also allows for time-lapse creation from your footage and utilizes a MapPin feature to mark and locate your camera's exact position.

## 5.4 Data Overlay

Each captured image and video is automatically stamped with the moon phase, temperature, and time, providing valuable data for tracking animal activity patterns.

---

## 6. Mounting the Camera

The camera offers versatile mounting options to suit various environments.

### 6.1 Tree Mounting (Strap)

Use the provided mounting strap to secure the camera to a tree or pole. Ensure the strap is tightened firmly to prevent movement.

### 6.2 Wall/Fence Mounting (Bracket)

For permanent installations on walls or fences, utilize the screw-in mounting bracket. This allows for precise positioning and angle adjustment.

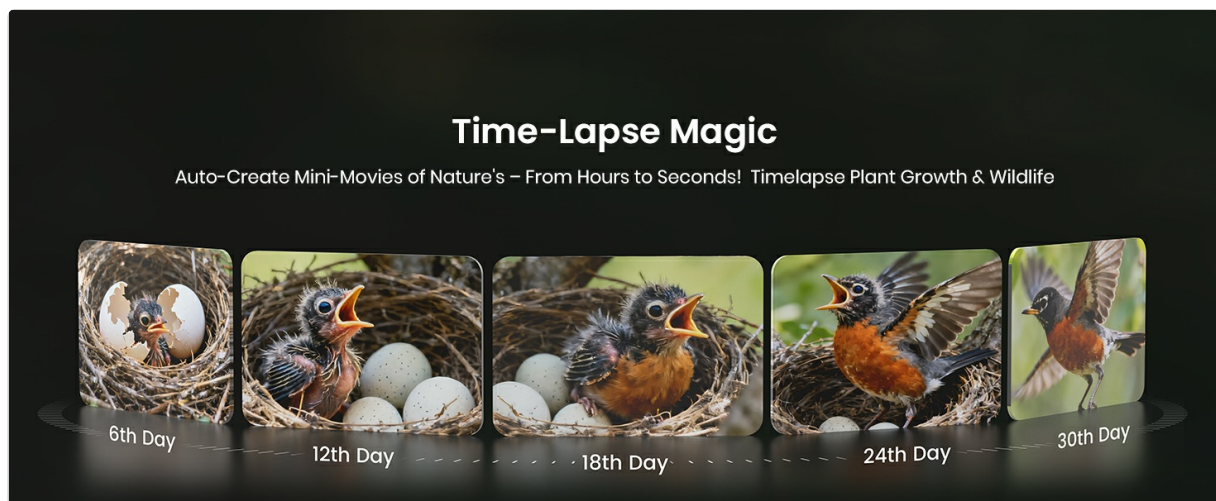


Figure 6.1: Example of split installation with the camera and solar panel mounted separately.

Video 6.1: Official Misstech video demonstrating how to install the camera with its solar panel. This video covers the physical mounting process for the camera and solar panel.

## 7. Maintenance

### 7.1 Cleaning

Regularly clean the camera lens, PIR sensor, and solar panel with a soft, damp cloth to ensure optimal performance. Avoid abrasive materials or harsh chemicals.

### 7.2 Battery Care

The integrated solar panel continuously charges the internal battery. For best results, ensure the solar panel receives direct sunlight. If the camera is stored for extended periods, ensure it is fully charged before storage and periodically recharged to maintain battery health.

### 7.3 SD Card Management

The 32GB Micro SD card can store up to 180 days of footage. Periodically review and offload important footage to prevent the card from becoming full. Formatting the SD card regularly can help maintain performance.

## 8. Troubleshooting

- **Camera not powering on:** Ensure the battery is charged. Connect the USB charging cable to verify if the charging indicator lights up.
- **Poor image/video quality:** Check if the lens is clean and free from obstructions. Ensure the camera is within optimal range for night vision if applicable. Verify resolution settings in the menu.
- **Motion detection issues:** Adjust PIR sensitivity settings. Ensure the sensor is not obstructed. Consider the placement relative to moving branches or other environmental factors that might cause false triggers or missed events.
- **App connection problems:** Ensure your smartphone's Bluetooth is enabled and within the specified range (up to 45ft/15m for connection). Restart both the camera and the app if issues persist.
- **Solar panel not charging:** Ensure the solar panel is positioned to receive direct sunlight for several hours daily. Check for any obstructions blocking sunlight.

## 9. Specifications

Feature	Detail
Model Name	SV-TCYW
Indoor/Outdoor Usage	Outdoor
Power Source	Solar Powered
Connectivity Protocol	Bluetooth
Video Capture Resolution	4K UHD
Effective Still Resolution	64 MP
Trigger Speed	0.1 seconds
Night Vision Technology	Thermal Sensing, Infrared Light Source
Aperture	f/1.6
Water Resistance Level	IP66 Waterproof
Flash Memory Installed Size	32 GB Micro SD (included)
Battery Power	5000 Milliamp Hours (rechargeable)
Control Method	App (Trailcam Go)
Product Dimensions	3.14 x 2.36 x 4.72 inches
Item Weight	1.43 pounds

## 10. Warranty and Support

Misstech is committed to customer satisfaction. If you have any questions, require assistance, or encounter any issues with your camera, please contact our support team. You can reach us through the "Trailcam Go" app, official email, or Amazon messages. We aim to provide a helpful response within 24 hours.