

Manuals+

[Q & A](#) | [Deep Search](#) | [Upload](#)

[manuals.plus](#) /

› [KOSPET](#) /

› [KOSPET Orb Smart Watch User Manual](#)

KOSPET Orb

KOSPET Orb Smart Watch User Manual

Model: Orb

1. INTRODUCTION

This manual provides essential information for setting up, operating, and maintaining your KOSPET Orb Smart Watch. Please read it thoroughly to ensure proper use and to maximize your device's features.



Image: KOSPET Orb Smart Watch with orange strap, showcasing its main display with time, steps, and calorie count.

2. WHAT'S IN THE BOX

Your KOSPET Orb Smart Watch package includes the following items:

- 1 x KOSPET Orb Smart Watch
- 1 x Charger Cable
- 1 x User Manual



Image: Contents of the KOSPET Orb Smart Watch package, including the watch, charging cable, and user manual.

3. SETUP

3.1. App Installation

To unlock the full potential of your KOSPET Orb Smart Watch, download and install the **Apexmove** app on your smartphone. The app is compatible with iOS 10.0+ and Android 5.1+ devices.

1. Scan the QR code provided in the physical user manual or search for "Apexmove" in the Apple App Store or Google Play Store.
2. Download and install the app.
3. Register and log in to your Apexmove account.



Image: Step-by-step guide for connecting the smartwatch to the Apexmove app on a smartphone.

3.2. Device Pairing

1. Ensure your smartphone's Bluetooth is enabled.
2. Open the Apexmove app and navigate to the "Device" section.
3. Select "Add a new device" and choose your KOSPET Orb from the list.
4. Confirm the pairing request on both your smartphone and the watch.

3.3. Notification Setup

To receive messages and app notifications on your watch:

- **For iOS:** Ensure the Apexmove app remains active. Go to your phone's "Settings" > "Notifications" and allow Apexmove to access notifications. Enable notifications for desired apps within the Apexmove app.
- **For Android:** Ensure the Apexmove app remains active and add it to the whitelist in your phone's settings. Go to the Apexmove app > "Device" > "SMS Reminder" and enable for desired apps.



Image: Guide for configuring app notifications on iOS.



Image: Guide for configuring app notifications on Android.

4. OPERATING THE SMARTWATCH

4.1. Basic Navigation

The KOSPET Orb features a responsive 1.43" AMOLED touchscreen and physical buttons for navigation:

- **Touchscreen:** Swipe left/right, up/down to navigate through menus and widgets. Tap to select items.
- **Rotating Crown:** Use the high-sensitivity rotating crown to scroll through options or adjust settings.
- **Buttons:** Specific functions for each button are detailed in the app's settings for customization.

4.2. Key Features

The KOSPET Orb Smart Watch offers a wide array of functionalities:

- **Health Tracking:** Continuous monitoring of heart rate, blood oxygen (SpO2), stress levels, and mood. Includes menstrual cycle tracking for women.
- **Sport Modes:** Over 175 sport modes, including automatic recognition for 6 common activities like walking, running, cycling, and elliptical.
- **Bluetooth Calling:** Make and answer calls directly from your wrist using Bluetooth 5.3.
- **Notifications:** Receive alerts for calls, messages, and app notifications.
- **Daily Assistant:** Access features like voice assistant, remote photo capture, music control, alarm,

calculator, sedentary reminder, weather forecast, and stopwatch.

- **Customizable Watch Faces:** Choose from stunning built-in designs, dynamic animated watch faces, or personalize with your own photos.

Multifunctional Smart Watch



Image: Multifunctional display of the KOSPET Orb, showing call interface, weather, and social media notifications.

Keep Track of Your Health



Blood oxygen
Monitoring

Menstrual
Cycle



One-Tap
Health check

Image: Health tracking features including blood oxygen monitoring, menstrual cycle tracking, and a one-tap health check.

175+ Sports Modes



Image: The smartwatch interface showing active sport mode tracking calories, steps, and distance.

How to receive message or APP notification? **Android**

1. Ensure the "Apexmove" app remains active (Android users need to add the app to the whitelist in Settings).
2. Disable "Do Not Disturb" & "Low Power Mode".
3. Message sync won't occur if the app logged into other devices or phones in the chat interface.

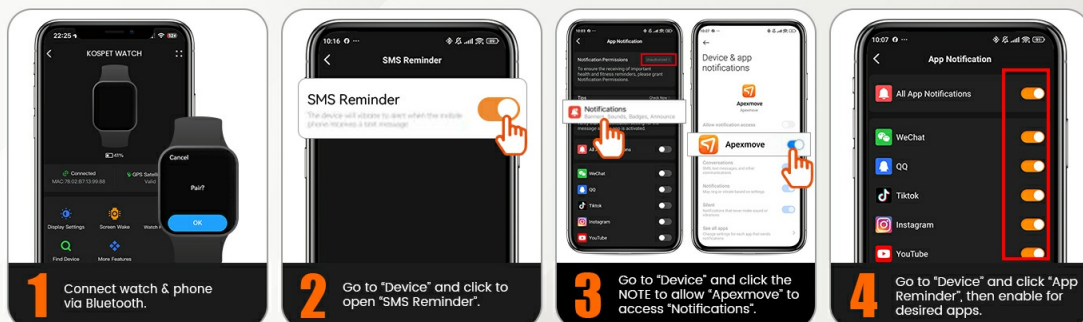


Image: A selection of dynamic and customizable watch faces available for the KOSPET Orb.

4.3. Apexmove App Integration

The exclusive Apexmove app provides tailored training plans, intelligent coaching, and real-time performance tracking, seamlessly integrated with your watch.

Apexmove-Designed Exclusively for Sports



APEXMOVE

Create your personalized training plan and track your unique data.



Image: The KOSPET Orb Smart Watch interacting with the Apexmove app on a smartphone, highlighting personalized training and data tracking.

4.4. Official Product Video

Your browser does not support the video tag.

Video: An official KOSPET video showcasing the features and design of the KOSPET Orb Smart Watch.

5. MAINTENANCE

5.1. Charging

The KOSPET Orb Smart Watch is equipped with a 350 Milliamp Hours battery, offering up to 25 days of battery life in standby mode, 11 days with heavy use, and 5 days in Always-On Display (AOD) mode. Use the provided charger cable to charge your device.

25 Days Battery Life



UP TO

3-5 Days

AOD Mode

UP TO

9-11 Days

Heavy Usage

UP TO

14-17 Days

Typical Usage

UP TO

25+ Days

Standby Mode

Image: Battery life estimates for the KOSPET Orb Smart Watch under various usage conditions.

5.2. Cleaning

Regularly clean your smartwatch to maintain its appearance and functionality. Use a soft, dry cloth. Avoid harsh chemicals or abrasive materials.

5.3. Water Resistance

The KOSPET Orb Smart Watch has an IP68 waterproof rating, making it suitable for daily wear and various water-related activities. Avoid prolonged exposure to hot water or steam.

IP68, Enjoy the Splash



Image: The KOSPET Orb Smart Watch being splashed with water, illustrating its IP68 water resistance.

6. TROUBLESHOOTING

If you encounter issues with your KOSPET Orb Smart Watch, try the following steps:

- **Connectivity Issues:** Ensure Bluetooth is enabled on your phone and the watch is within range. Restart both devices and try pairing again.
- **Battery Drain:** Adjust screen brightness, reduce notification frequency, or disable Always-On Display to extend battery life.
- **Display Not Responding:** Restart the watch by holding down the power button. If unresponsive, ensure it is charged.
- **App Sync Problems:** Ensure the Apexmove app is updated to the latest version. Check your phone's app permissions for Apexmove.

7. SPECIFICATIONS

Feature	Detail
Brand	KOSPET

Model Number	Orb
Screen Size	1.43 Inches AMOLED
Display Type	AMOLED with Corning Gorilla Glass
Item Weight	5.9 ounces (44.5g)
Battery Capacity	350 Milliamp Hours
Battery Life	Up to 25 days (standby), 11 days (heavy use), 5 days (AOD)
Waterproof Rating	IP68
Connectivity	Bluetooth 5.3
Operating System	Compatible with Android and iOS
Memory Storage	256 MB
GPS	No GPS

8. WARRANTY AND SUPPORT

For warranty information and customer support, please refer to the documentation included with your product or visit the official KOSPET website. KOSPET is committed to providing products that fulfill customer needs and support a healthy lifestyle.