



Manuals.plus /

› Atopskins /

› Atopskins 8-in-1 Hair Dryer Brush & Hot Air Styler Instruction Manual

## Atopskins B0FH4SNRC8

# Atopskins 8-in-1 Hair Dryer Brush & Hot Air Styler Instruction Manual

Model: B0FH4SNRC8

## 1. INTRODUCTION

---

Thank you for choosing the Atopskins 8-in-1 Hair Dryer Brush & Hot Air Styler. This versatile device combines multiple hair styling functions into one compact tool, designed for efficient and effective hair care. Please read this manual thoroughly before use to ensure safe operation and optimal performance.

## 2. IMPORTANT SAFETY INFORMATION

---

To reduce the risk of electric shock, burns, fire, or injury, always follow these basic safety precautions:

- **Burn Hazard:** Surfaces become extremely hot during use. Avoid direct contact with skin.
- **Electric Shock Risk:** Keep away from water. Do not use near bathtubs, sinks, or other water sources.
- **Fire Risk:** Unplug the device when not in use. Do not leave it unattended when plugged in.
- **Children:** Keep out of reach of children.
- **Overheating Protection:** The device features UL 962-certified auto-shutoff to prevent overheating.
- **Power Supply:** Automatically cuts off power in case of leakage.

## 3. PACKAGE CONTENTS

---

Your Atopskins 8-in-1 Hair Dryer Brush & Hot Air Styler package includes:

- Main Styler Handle (Foldable)
- L/R Auto Curler Attachments (2 pieces)
- Air Concentrator Nozzle
- Hot Air Brush (Round Barrel Heated Comb)
- Air Smoothing Comb
- Straightening Brush

- Volume Diffuser
- Heat-Resistant Gloves

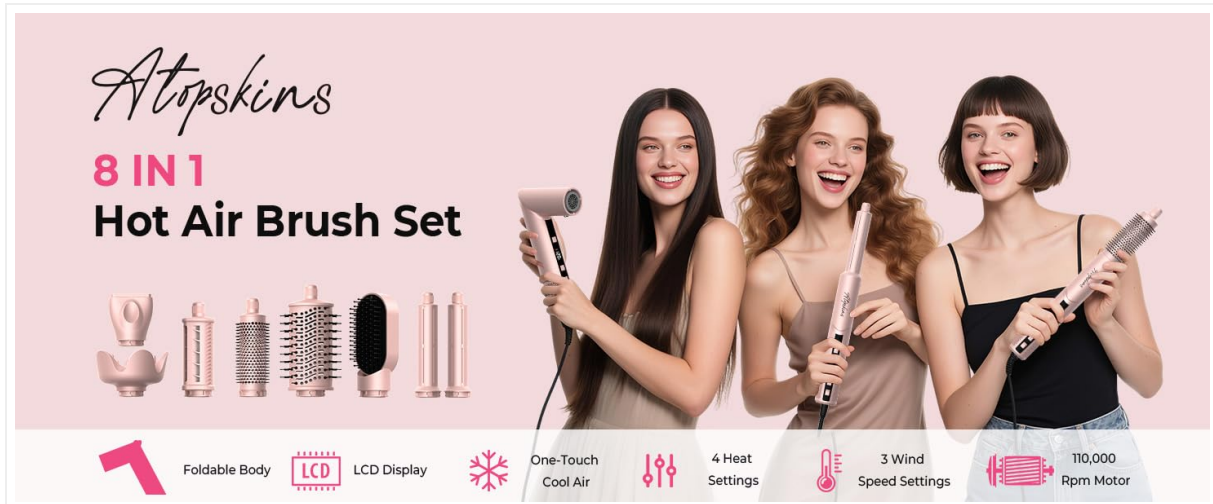


Image: Overview of the Atopskins 8-in-1 Hair Dryer Brush and its various attachments, including the main unit, auto curlers, concentrator, hot air brush, smoothing comb, straightening brush, and diffuser.

## 4. PRODUCT FEATURES

- **8-in-1 Multi-Styler System:** Combines hair dryer, curling iron, straightener, volumizer, diffuser, detangler, scalp massager, and ionic care functions.
- **High-Speed Motor:** 110,000 RPM motor for fast drying and efficient styling.
- **Coanda Effect Auto-Wrap Curling:** 1.25-inch auto-wrap curlers use airflow to create symmetrical curls, reducing frizz by 78%.
- **Smart Dual-Temp Control:** 4 heat settings (30°C-120°C) and 3 airflow speeds for various hair types.
- **One-Click Cold Air:** Instantly locks styles and seals hair cuticles.
- **Foldable Design:** 8.5-inch body reduces size by 50% for travel and storage.
- **360° Swivel Cord:** Prevents tangling during use.
- **LCD Display:** Clear display for heat and speed settings.
- **Ionic Technology:** High concentration of negative ions (200,000,000) for smoother, shinier hair.

## 5. SETUP

### 5.1 Attaching Accessories

1. Ensure the main styler handle is unplugged and cool.
2. Align the desired attachment with the top of the main handle.
3. Push the attachment firmly onto the handle until it clicks into place.
4. To remove, press the release button (if present) or twist gently and pull the attachment off.

## One Touch Instant Cooling

Activate instant cooling with one touch. This cool blast sets your style while reducing heat damage to hair strands.



Image: Detailed view of the main styler handle, highlighting the LCD display, 3 speed settings, 4 temperature settings, power switch, and how attachments connect.


### 5.2 Folding/Unfolding the Main Unit

The main unit features a one-click folding mechanism for compact storage and travel.

- To fold: Locate the folding button/mechanism on the handle and activate it to fold the dryer section.
- To unfold: Reverse the process until the dryer section locks into its operational position.


### Oval-Shaped curling Brush

Direct airflow to the roots for quick drying. Effortlessly create voluminous styles, leaving hair dry, smooth, and sleek.



- Short Tufted Bristles**  
Boost root volume  
Tangle-free
- Nylon Pin Bristles**  
Massage the scalp  
Scald-proof

**Before**



**After**




Image: Illustration of the vertical airflow direction, demonstrating how the smoothing comb attachment works to create smoother hair.

## 6. OPERATING INSTRUCTIONS

### 6.1 Power On/Off and Settings

- **Power Switch:** Short press the power on/off button to turn the device on or off.
- **Temperature Settings:** Use the temperature control buttons to select one of 4 settings (30°C, 60°C, 90°C, 120°C). The LCD display will show the selected temperature.
- **Airflow Speed Settings:** Use the speed control buttons to select one of 3 airflow speeds (Low, Medium, High).
- **One-Click Cold Air:** Hold the designated button for an instant blast of cold air to set your style.

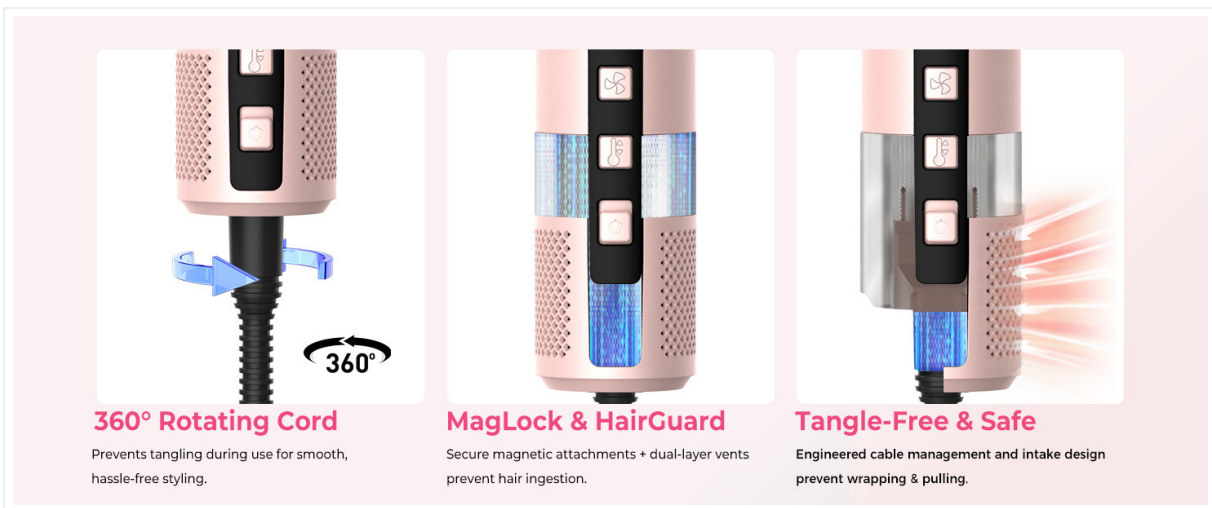


Image: Detailed view of the control panel, illustrating the buttons for one-click cold air, three wind speed settings, and four temperature settings with their corresponding values.

## 6.2 Using the Attachments

### 6.2.1 L/R Auto Curler

The auto curlers utilize the Coanda effect to wrap hair automatically, creating curls without extreme heat.

1. Ensure hair is damp or dry, not soaking wet.
2. Take a 5-8 cm wide section of hair.
3. Place the end of the hair section near the air curler. The hair will automatically be adsorbed and wrapped around the barrel.
4. Hold the air curler handle parallel to the hair roots for approximately 8 seconds.
5. Release the hair. Do not brush curls out too soon after styling; use mousse or styling spray to prolong the hairstyle.

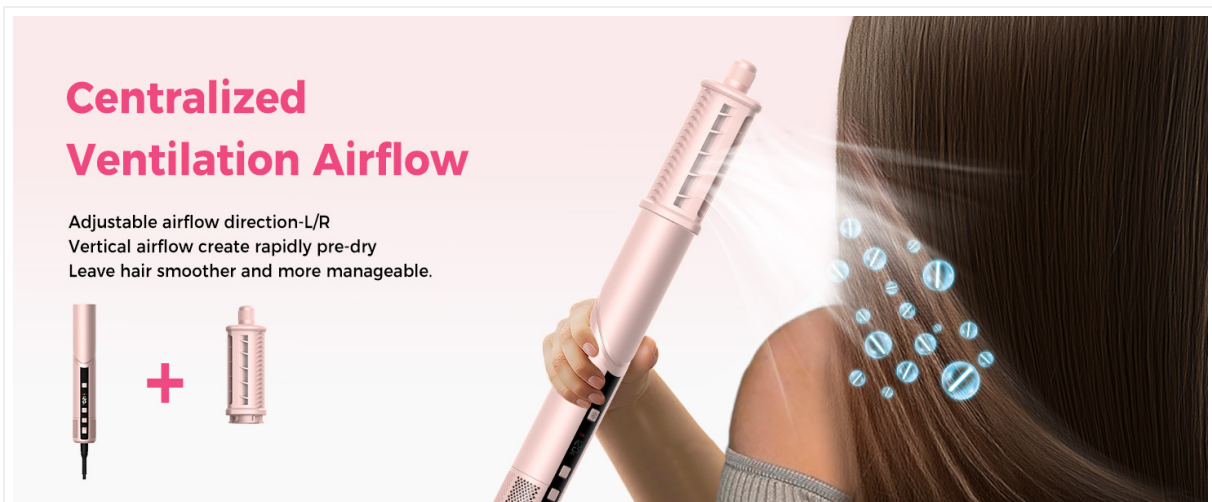


Image: Step-by-step visual guide on using the auto curler, from sectioning hair to the final curled result.

## High-Speed Hair Dryer Concentrator

This high-speed hair dryer features a magnetic nozzle for precise airflow control. With 110,000 RPM and 28 m/s airflow, it cuts drying time by 50% and reduces heat damage compared to other dryers.



Before



After



Image: Demonstrates the automatic air curling iron in use, highlighting its ability to curl hair to the left or right for convenient styling.

### 6.2.2 Air Concentrator

Use the air concentrator for fast drying and precise airflow control.

- Attach the concentrator nozzle to the main unit.
- Direct the airflow towards sections of damp hair to dry quickly.
- Use a brush to guide hair for a smooth finish.

## Diffuser Attachment of Hair Dryers

Designed to enhance the natural curls of the hair, the diffuser reduces frizz effectively with gentle and even airflow, maintaining the shape and elasticity of curls.



Before



After



Image: Demonstrates the high-speed hair dryer concentrator, showing its effectiveness in drying hair quickly with before and after comparisons.

### 6.2.3 Hot Air Brush (Round Barrel)

Ideal for adding volume and smoothing roots.

- Attach the round barrel hot air brush.
- Work with small sections of damp hair.
- Place the brush near the roots and gently pull through to the ends, rotating slightly for volume or curl.

### 6.2.4 Air Smoothing Comb

For sleek hair, reducing frizz, and adding shine.

- Attach the air smoothing comb.
- Use on damp or dry hair, gliding the comb through sections from root to tip.

### 6.2.5 Straightening Brush

Achieve straighter, smoother hair with continuous heating.

- Attach the straightening brush.
- Work with dry hair, slowly passing the brush through sections from root to tip.

### 6.2.6 Volume Diffuser

Designed to enhance natural curls and waves, reducing frizz.

- Attach the volume diffuser.
- Place sections of damp, curly hair into the diffuser bowl.
- Gently lift towards the scalp and hold, allowing the air to dry and define curls.



Image: The diffuser attachment in action, demonstrating how it enhances natural curls and reduces frizz, with before and after comparisons.

## 6.3 Official Product Video



Video: An official product video demonstrating the features and usage of the Atopskins 8-in-1 Hair Dryer Brush & Hot Air Styler.

## 7. MAINTENANCE

---

### 7.1 Cleaning

- Always unplug the device and allow it to cool completely before cleaning.
- Wipe the main unit and attachments with a soft, damp cloth. Do not use abrasive cleaners or solvents.
- Remove any hair or debris from the brush bristles and air inlets/outlets regularly to maintain optimal performance.
- Ensure all parts are completely dry before storing or next use.

### 7.2 Storage

- Store the device and its attachments in a cool, dry place.
- Utilize the foldable design of the main unit for compact storage.
- Avoid wrapping the power cord tightly around the device, as this can damage the cord.

## 8. TROUBLESHOOTING

---

If you encounter issues with your Atopskins 8-in-1 Hair Dryer Brush & Hot Air Styler, please refer to the following common solutions:

Problem	Possible Cause	Solution
Device does not turn on	Not plugged in; Power outlet issue; Device malfunction	Ensure device is securely plugged into a working outlet. Test outlet with another appliance. If issue persists, contact customer support.
No heat or insufficient heat	Incorrect heat setting; Overheating protection activated; Device malfunction	Check LCD display for selected heat setting. Unplug and allow device to cool for 10-15 minutes if overheating is suspected. Clean air inlets/outlets.
Attachments not staying on	Attachment not fully secured; Damaged attachment/main unit connection	Ensure attachment is pushed firmly until it clicks. Inspect connection points for damage.
Hair not curling with auto curler	Hair section too large; Hair too wet/dry; Incorrect technique	Use smaller hair sections (5-8 cm). Ensure hair is damp or dry, not soaking wet. Hold curler parallel to roots for 8 seconds.

## 9. SPECIFICATIONS

- **Model:** B0FH4SNRC8
- **Brand:** Atopskins
- **Product Dimensions:** 13.1 x 13.1 x 13.1 inches (folded/packaged)
- **Weight:** 4.34 Pounds
- **Motor Speed:** 110,000 RPM
- **Heat Settings:** 4 (30°C, 60°C, 90°C, 120°C)
- **Airflow Speeds:** 3 (Low, Medium, High)
- **Color:** Pink
- **Material:** Plastic
- **Product Benefits:** Curling, Frizz Control

## 10. WARRANTY AND SUPPORT

For warranty information or technical support, please refer to the product packaging or contact Atopskins customer service directly. Keep your purchase receipt as proof of purchase.