

## GardePro E8 2.0

# GardePro E8 2.0 WiFi Trail Camera User Manual

Model: E8 2.0

## 1. INTRODUCTION

The GardePro E8 2.0 WiFi Trail Camera is designed for capturing high-quality images and videos of wildlife or for property surveillance. It features 4K Ultra HD video recording, 64MP photo resolution, and no-glow infrared night vision. The camera incorporates innovative low-power WiFi and Bluetooth connectivity, allowing for convenient control and media access via the GardePro Mobile App on your smartphone. Its dual-antenna design enhances WiFi stability and range, making it suitable for various outdoor environments.



**Video 1.1:** GardePro E8 2.0 Series Product Introduction. This video provides a general overview of the camera's features and design.

## 2. PACKAGE CONTENTS

Verify that all items are present in your package:

- 1 x GardePro E8 2.0 Trail Camera
- 2 x Antennas
- 1 x Instruction Manual
- 1 x Mounting Strap

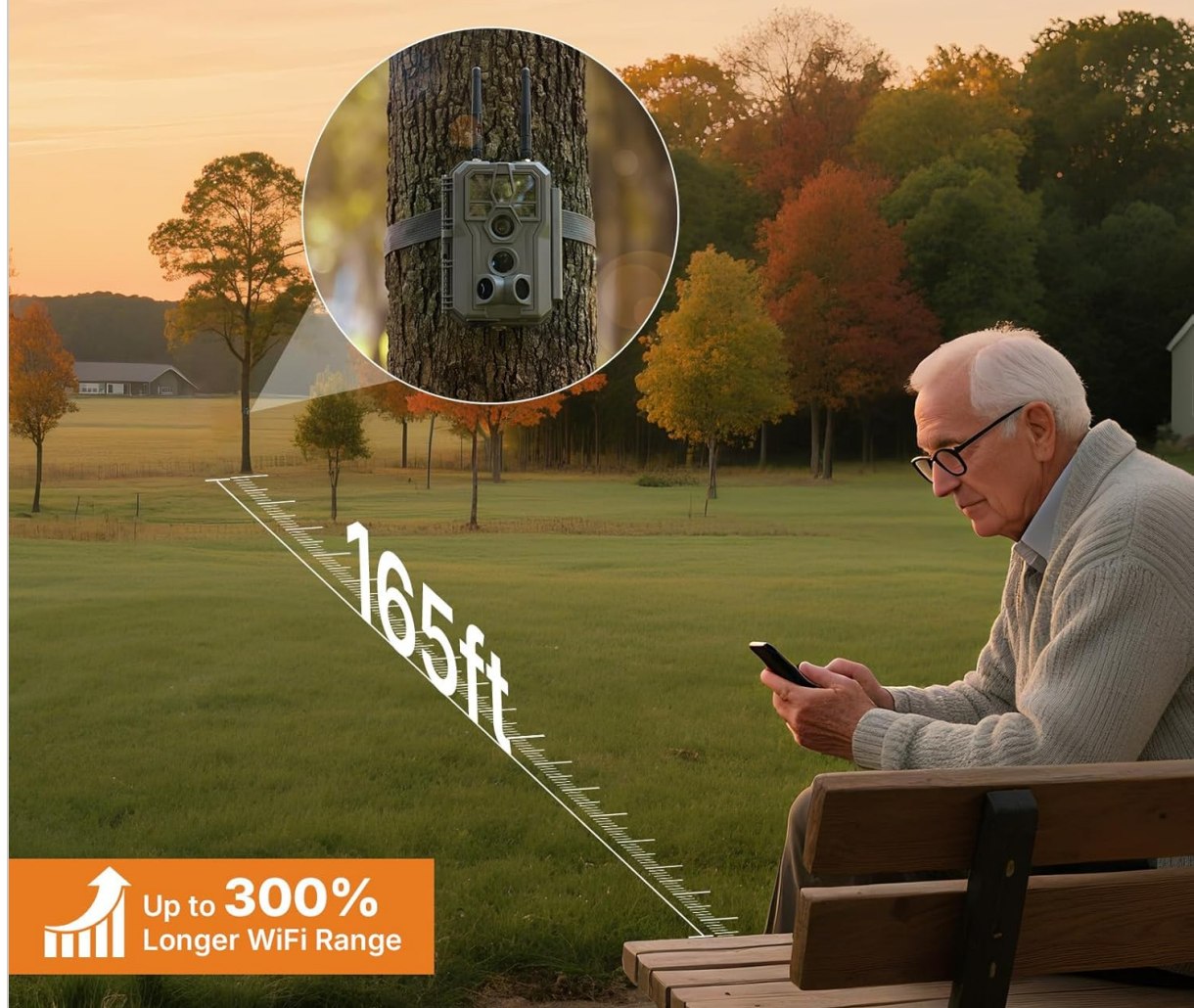
**Note:** 8 AA batteries and an SDHC/SDXC memory card (up to 512GB) are required for operation and are not included. The GardePro SP350 solar panel is sold separately.

## 3. CAMERA OVERVIEW

Familiarize yourself with the main components of your GardePro E8 2.0 camera.

# Industry's Best Long-Range Connectivity

165ft Dual Antenna Connectivity



Up to **300%**  
Longer WiFi Range

**Image 3.1:** Front view of the GardePro E8 2.0 camera, highlighting the main lens, motion sensors, and dual antennas for enhanced connectivity.



## IP66 Waterproof, Built for the Outdoors

Rain, snow, or dust — GardePro keeps recording.



**Image 3.2:** Internal view of the camera, displaying the LCD screen, navigation buttons (MENU, OK, directional arrows), and the ON/OFF/START switch. The SD card slot and USB port are also visible.

## 4. SETUP

---

### 4.1 Powering the Camera

The GardePro E8 2.0 can be powered by 8 AA batteries (not included) or an optional GardePro SP350 solar panel (sold separately). The E8 2.0 Pro variant includes a built-in 7800mAh rechargeable battery.

- **AA Batteries:** Insert 8 new AA batteries into the battery compartment, ensuring correct polarity.
- **Rechargeable Battery (E8 2.0 Pro only):** The built-in battery can be charged via a USB-C cable.
- **Solar Panel (Optional):** Connect the GardePro SP350 solar panel to the camera's external power port for continuous charging and extended outdoor use.



**Image 4.1:** Illustration of battery installation and optional solar panel connection for continuous power.

## 4.2 SD Card Installation

A full-size SDHC/SDXC memory card (up to 512GB) is required to store photos and videos. Insert the SD card into the designated slot with the metal contacts facing the correct direction, as indicated on the camera.

## 4.3 Mounting the Camera

Use the included mounting strap to secure the camera to a tree or post. The camera also features dual copper mounting posts for tripod or wall compatibility, offering flexible installation options. Ensure the camera is positioned to capture the desired area, avoiding obstructions.





**Image 4.2:** The GardePro E8 2.0 camera securely mounted to a tree using the provided strap, ready for outdoor use.

## 5. OPERATING THE CAMERA

---

### 5.1 Power On/Off and Mode Selection

Locate the ON/OFF/START switch inside the camera. Switch it to 'ON' to activate the camera. The camera will enter setup mode, allowing you to adjust settings. To begin recording, switch to 'START'.

### 5.2 App Connection and Control

The GardePro E8 2.0 connects directly to your smartphone via Bluetooth for initial pairing, then uses the camera's built-in WiFi for data transfer and live view. Download the free GardePro Mobile App from your device's app store.

- **Pairing:** Enable Bluetooth on your smartphone and open the GardePro Mobile App. Follow the in-app instructions to connect to your camera.
- **WiFi Range:** The dual antennas provide a connection range of up to 165 ft (50 m) in open conditions. Physical obstructions may reduce this range.
- **Functionality:** The app allows you to view and download original photos and videos, adjust camera settings, and use the Live View feature.

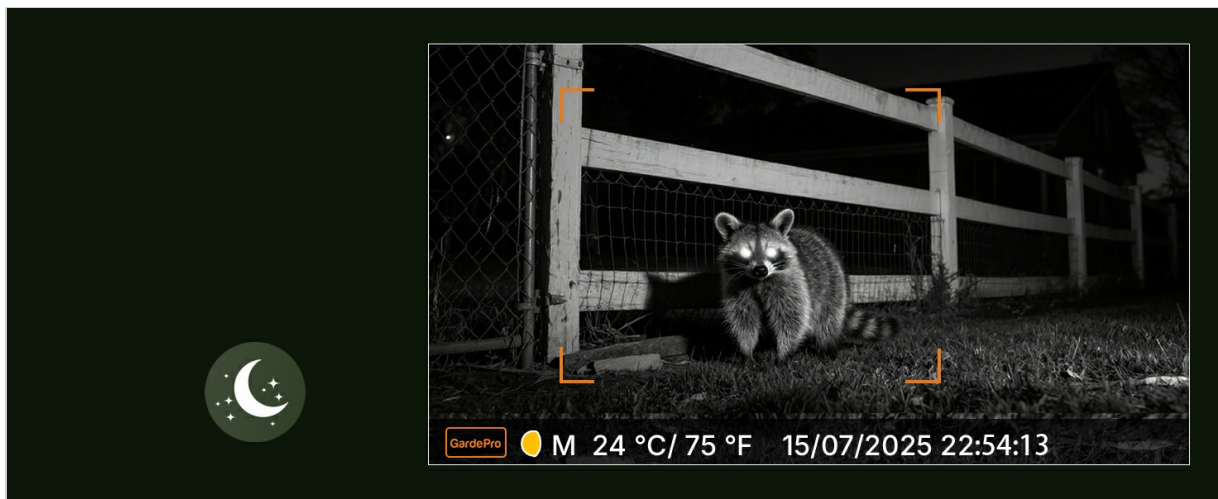
**Important Note:** The E8 2.0 does not connect to home WiFi routers or cellular networks. It supports direct connection to a smartphone only. PCs, laptops, and web browsers are not supported for WiFi connection.



**Image 5.1:** The GardePro Mobile App interface, showing options for live view, status, and gallery access, enabling remote control and media management.

### 5.3 Live View for Real-Time Observation

Utilize the Live View function in the GardePro Mobile App to see what the camera is capturing in real-time. This is useful for precise camera aiming during installation and for observing wildlife without disturbance from a distance of up to 165 ft in open areas.



**Image 5.2:** A user monitoring the camera's live feed on a smartphone, demonstrating the long-range WiFi connectivity for remote observation.

### 5.4 Recording Modes

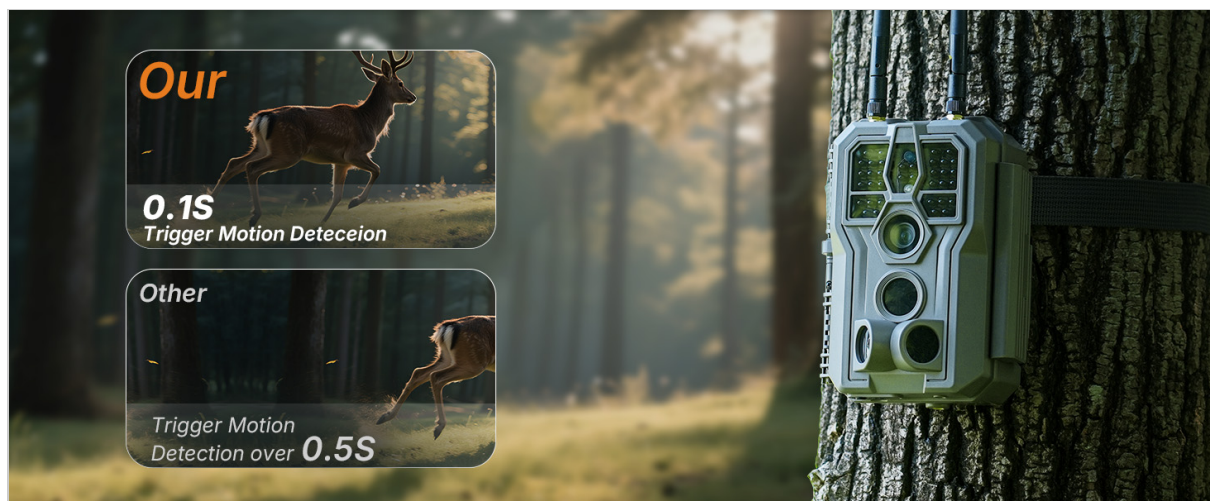
The camera supports multiple recording modes:

- **Motion Mode:** Captures photos or videos when motion is detected by the PIR sensors.
- **Time-Lapse Mode:** Takes photos at set intervals, regardless of motion.
- **Hybrid Mode:** Combines motion-triggered events with time-lapse photography.

### 5.5 Image and Video Quality

The E8 2.0 captures 4K Ultra HD videos and 64MP still images, providing clear and detailed footage. The 0.1s fast trigger speed and 120° wide PIR detection angle ensure that fast-moving subjects are captured effectively.

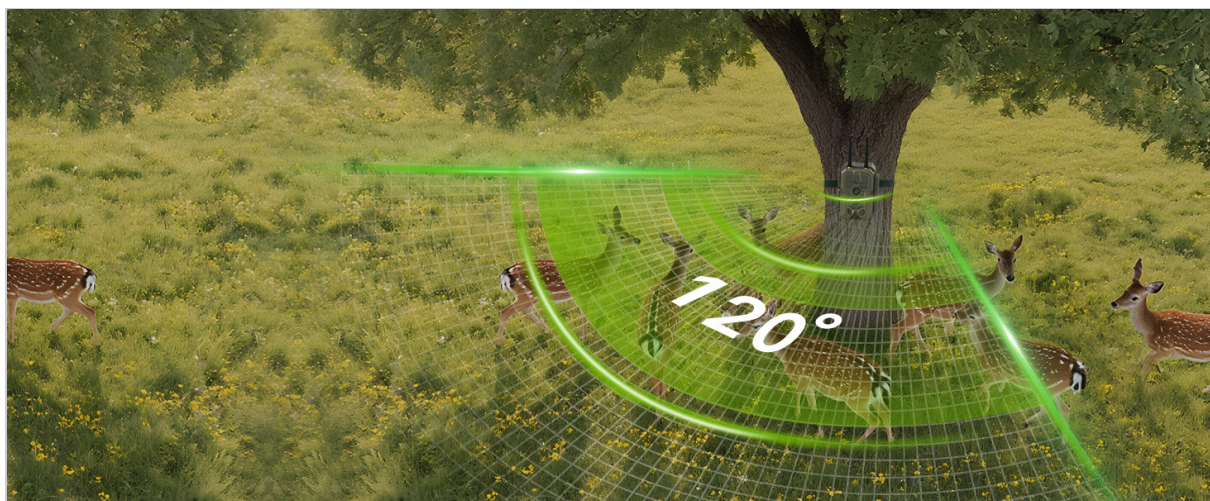




**Image 5.3:** Example of 4K Ultra HD video quality, showcasing a fox in clear detail during daytime.

## 5.6 No-Glow IR Night Vision

Equipped with invisible 940nm no-glow infrared LEDs, the camera delivers clear night images and videos without emitting visible light, preventing animals from being startled and ensuring discreet surveillance.



**Image 5.4:** Night vision footage of a raccoon, demonstrating the effectiveness of the 940nm no-glow infrared technology for clear, discreet nighttime recording.

## 6. MAINTENANCE

### 6.1 Battery Management

Regularly check battery levels, especially if not using a solar panel. Replace AA batteries when low. For the E8 2.0 Pro, ensure the rechargeable battery is fully charged before deployment for optimal performance.

### 6.2 Weather Protection

The GardePro E8 2.0 camera is IP66 rated, providing protection against dust and strong jets of water. This ensures reliable operation in various weather conditions, including rain and snow. However, avoid submerging the camera in water.



**Image 6.1:** The camera operating in rainy conditions, illustrating its robust IP66 waterproof design for outdoor durability.

## 7. TROUBLESHOOTING

- **Camera not turning on:** Check if batteries are inserted correctly and fully charged. For E8 2.0 Pro, ensure the internal battery is charged.
- **WiFi connection issues:** Ensure your smartphone is within 165 ft (50 m) of the camera in open conditions. Avoid physical obstructions like thick walls or dense foliage. Remember, it connects directly to your smartphone, not home WiFi.
- **Poor image/video quality:** Check the lens for dirt or condensation. Ensure the camera is stable and not subject to excessive movement. Verify settings in the app for desired resolution.
- **Camera not recording:** Ensure an SD card is inserted and has sufficient free space. Check if the camera is in 'START' mode and not in standby after app use. Format the SD card if issues persist.
- **Short battery life:** Use high-quality AA batteries. Consider using the GardePro SP350 solar panel for extended operation. Reduce video length or frequency of captures if possible.

## 8. SPECIFICATIONS

Feature	Specification
---------	---------------



Model Name	E8 2.0
Effective Still Resolution	64 MP
Video Capture Resolution	4K
Connectivity Technology	Wireless (Bluetooth, Wi-Fi)
Connectivity Protocol	Bluetooth, Wi-Fi
Power Source	Battery Powered (8xAA, or 7800mAh rechargeable for Pro model)
Flash Memory Supported Size Maximum	512 GB (SDHC/SDXC)
Night Vision Range	100 Feet
Viewing Angle	70 Degrees
Trigger Speed	0.1s
PIR Detection Angle	120°
International Protection Rating	IP66
Product Dimensions (L x W x H)	4.2 x 2.9 x 5.6 inches
Item Weight	1.3 pounds

## 9. WARRANTY AND SUPPORT

For warranty information, technical support, or any inquiries regarding your GardePro E8 2.0 WiFi Trail Camera, please refer to the official GardePro website or contact their customer service directly. Keep your purchase receipt for warranty claims.