

Manuals+

[Q & A](#) | [Deep Search](#) | [Upload](#)

Manuals.plus /

› [HP](#) /

› HP 15 Laptop User Manual (Model G9)

HP G9

HP 15 Laptop User Manual

Model: G9

1. GETTING STARTED

This section provides instructions for the initial setup of your HP 15 Laptop.

1.1 Unboxing and Initial Inspection

Carefully remove the laptop and all accessories from the packaging. Verify that all components are present:

- HP 15 Laptop
- Power Adapter (45W AC adapter)
- Documentation

Inspect the laptop for any visible damage. If any damage is found or components are missing, contact your retailer or HP support immediately.

1.2 Connecting Power

Before first use, ensure the laptop is fully charged. Connect the power adapter to the laptop's AC power port and then to a wall outlet.

ESSENTIAL PORTS

Versatile connectivity with USB-C, USB-A, HDMI, SD card reader, and more—ready for all your devices.

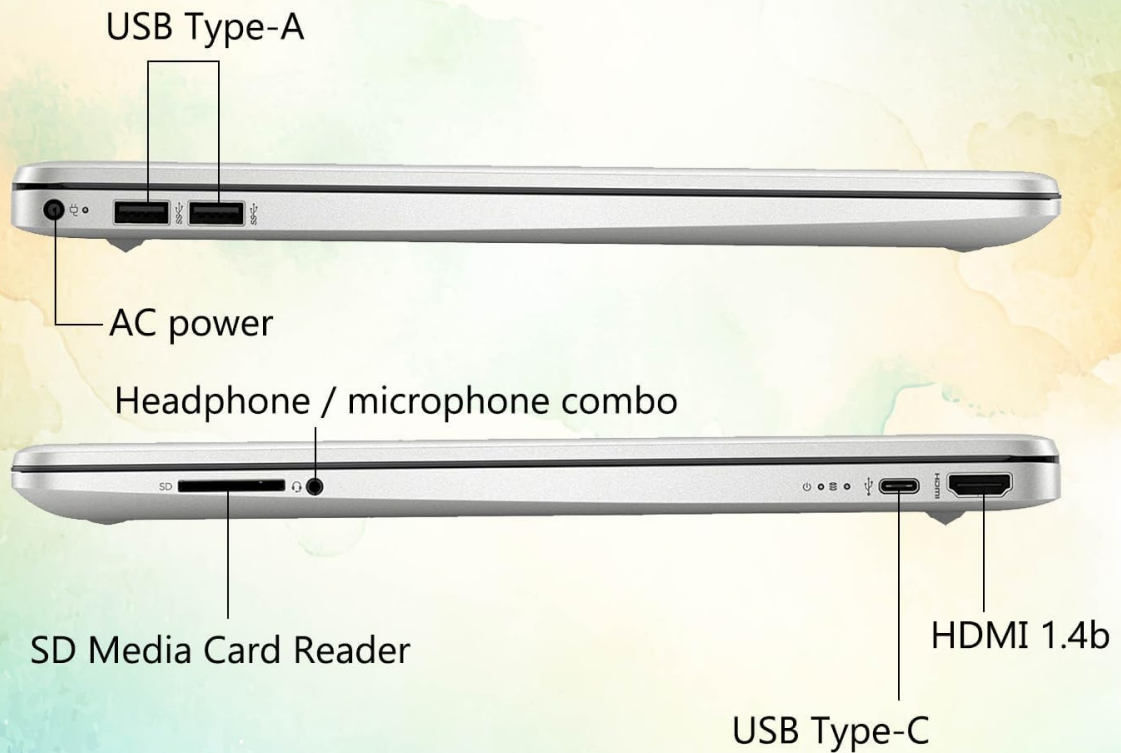


Image: Essential ports on the HP 15 Laptop, highlighting the AC power input.

The battery indicator light will show the charging status. Allow the laptop to charge for at least 30 minutes before initial power-on, or until fully charged.

1.3 First Power-On and Windows 11 Pro Setup

Open the laptop lid and press the power button. The laptop will boot up and guide you through the Windows 11 Pro setup process. Follow the on-screen instructions to:

- Select your region and language.
- Connect to a Wi-Fi network.
- Accept the license terms.
- Create or sign in with a Microsoft account.
- Set up a PIN or password.
- Configure privacy settings.

Once Windows 11 Pro is set up, you will be presented with the desktop.

1.4 Microsoft Office 365 Activation

Your HP 15 Laptop includes Microsoft Office 365. To activate it:

1. Ensure you are connected to the internet.
2. Open any Office application (e.g., Word, Excel).
3. Follow the prompts to sign in with your Microsoft account or create a new one.
4. The Office 365 subscription will be linked to your account.

2. OPERATING YOUR LAPTOP

This section covers the basic operation and features of your HP 15 Laptop.

2.1 Keyboard and Touchpad

The laptop features a full-size keyboard with a numeric keypad and a precision touchpad. Use the touchpad for navigation and gestures. Refer to Windows settings for touchpad customization.

2.2 Connectivity

Your laptop supports various connectivity options:

- **Wi-Fi 5:** Connect to wireless networks for internet access.
- **Bluetooth 5:** Pair with compatible devices such as headphones, mice, or keyboards.
- **USB Ports:**
 - 1 x USB Type-C (5Gbps)
 - 2 x USB Type-A (5Gbps)
- **HDMI 1.4b:** Connect to external displays or projectors.
- **SD Media Card Reader:** Insert SD cards for data transfer.
- **Headphone / Microphone Combo Jack:** Connect headphones or external microphones.

STAY CONNECTED

Stay effortlessly connected with strong Wi-Fi and Bluetooth
—no more spotty internet or weak signals.



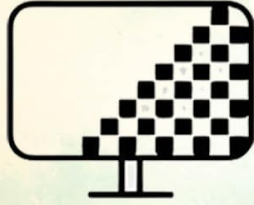
Image: Wireless connectivity features of the HP 15 Laptop.

2.3 Display and Audio

The 15.6-inch Full HD (1920 x 1080) IPS display features an anti-glare coating for comfortable viewing. Dual stereo speakers provide audio output, and dual array microphones are integrated for communication.

FHD IPS Display

Experience stunning FHD clarity with vibrant colors and sharp details bringing every moment to life.



15.6" FHD 1920x1080 LED Display
with
Anti Glare Coating



Image: The 15.6-inch Full HD IPS display with anti-glare coating.

2.4 Using Copilot AI

Your laptop includes Copilot AI, an intelligent assistant integrated into Windows 11 Pro. Access Copilot to assist with tasks, answer questions, and enhance productivity. You can typically launch Copilot from the taskbar or by using a dedicated key if available.

3. MAINTENANCE AND CARE

Proper maintenance ensures the longevity and optimal performance of your HP 15 Laptop.

3.1 Cleaning Your Laptop

- **Screen:** Use a soft, lint-free cloth lightly dampened with water or a screen cleaner. Avoid harsh chemicals.
- **Keyboard and Chassis:** Use a soft cloth. For dust, use compressed air.

- Ensure the laptop is powered off and unplugged before cleaning.

3.2 Software Updates

Regularly check for and install Windows updates to ensure your system has the latest security patches and performance improvements. Go to **Settings > Windows Update** to manage updates.

3.3 Battery Care

- Avoid extreme temperatures.
- Do not fully discharge the battery frequently.
- For long-term storage, charge the battery to about 50-70%.

3.4 Storage Management

Periodically review and delete unnecessary files to free up storage space. Windows 11 Pro includes tools like Storage Sense (in **Settings > System > Storage**) to automate this process.

4. TROUBLESHOOTING

This section addresses common issues you might encounter with your HP 15 Laptop.

4.1 Power Issues

- **Laptop not turning on:** Ensure the power adapter is securely connected and the outlet is functional. Try a different outlet.
- **Battery not charging:** Check the power adapter and cable for damage. Ensure the charging port is clean.

4.2 Display Problems

- **No display:** Connect an external monitor via HDMI to check if the issue is with the laptop screen or the system itself.
- **Flickering screen:** Update graphics drivers. Adjust display refresh rate in Windows settings.

4.3 Connectivity Problems

- **Wi-Fi not connecting:** Restart your router and laptop. Check Wi-Fi settings in Windows. Ensure Wi-Fi is enabled.
- **Bluetooth device not pairing:** Ensure the device is in pairing mode and within range. Remove and re-add the device in Bluetooth settings.

4.4 System Performance

- **Slow performance:** Close unnecessary applications. Check for background processes in Task Manager. Ensure sufficient free storage space.
- **System freezes:** Perform a hard reset by holding the power button until the laptop shuts down, then restart.

For more advanced troubleshooting or issues not covered here, refer to the HP support website or contact

5. SPECIFICATIONS

Detailed technical specifications for the HP 15 Laptop (Model G9).

Operating System: Windows 11 Pro

Intel UHD Graphics

Office

Copilot-AI

SD Card Reader + USB Type-C

HP 15 Laptop

15.6" FHD (1920 x 1080)

Up to 512GB SSD
Up to 16GB DDR4 RAM

Image: Key features and specifications of the HP 15 Laptop.

HP 15 Laptop (Model G9) Technical Specifications

Feature	Specification
Model Name	HP 15 Laptop (G9)
Operating System	Windows 11 Pro

Feature	Specification
Processor	Intel N4120 (4 Cores / 4 Threads, up to 2.6 GHz)
Graphics	Intel UHD Graphics (Integrated)
Display	15.6" Full HD (1920 x 1080) IPS, Anti-Glare, 250 nits
Memory (RAM)	4GB DDR4 (Configurable up to 16GB DDR4)
Storage	128GB SSD (Configurable up to 512GB SSD)
Wireless Connectivity	Wi-Fi 5, Bluetooth 5
Ports	1x USB Type-C (5Gbps), 2x USB Type-A (5Gbps), 1x HDMI 1.4b, 1x SD Media Card Reader, 1x Headphone/Microphone Combo Jack, 1x AC Power Port
Audio	Dual stereo speakers, Dual array microphones
Webcam	Built-in 720p HD Camera
Keyboard	US English, Full-size with Numeric Keypad
Power Adapter	45W AC adapter
Dimensions (L x W x H)	14.09" x 9.53" x 0.78"
Weight	3.8 lbs

6. WARRANTY AND SUPPORT

This section provides information regarding your product's warranty and how to obtain support.

6.1 Product Warranty

Your HP 15 Laptop (Model G9) comes with a standard manufacturer's warranty. The warranty period is typically **1 year** from the date of purchase, covering defects in materials and workmanship under normal use. Please retain your proof of purchase for warranty claims.

For detailed warranty terms and conditions, please refer to the documentation included with your product or visit the official HP support website.

6.2 Technical Support

If you encounter any issues that cannot be resolved using the troubleshooting steps in this manual, or require further assistance, please contact HP Technical Support.

- **Online Support:** Visit the official HP Support website for drivers, manuals, FAQs, and diagnostic tools.

- **Phone Support:** Contact HP customer service via phone. Refer to the HP website for regional contact numbers.
- When contacting support, have your laptop's serial number and model number (G9) ready.

Note: If you purchased this product through Amazon and have an Amazon Order ID, you may also contact your seller for initial assistance as indicated in the product description.