

Manuals+

[Q & A](#) | [Deep Search](#) | [Upload](#)

manuals.plus /

› [aphqua](#) /

› [APHQUA A97 10.26-inch Wireless CarPlay & Android Auto Display with 4K Dash Cam and 1080p Backup Camera User Manual](#)

aphqua A97

APHQUA A97 10.26-inch Wireless CarPlay & Android Auto Display User Manual

Model: A97

1. INTRODUCTION

This manual provides detailed instructions for the installation, operation, and maintenance of your APHQUA A97 10.26-inch Wireless CarPlay & Android Auto Display. This device integrates advanced features such as a 4K dash camera, 1080p backup camera, GPS navigation, and various audio output options to enhance your driving experience.

2. SAFETY INFORMATION

- Ensure the device is securely mounted and does not obstruct your view or interfere with vehicle controls.
- Do not attempt to operate the device or adjust settings while driving. Always pull over to a safe location.
- Use only the provided power adapter and cables to prevent damage or fire hazards.
- Keep the device away from extreme temperatures, direct sunlight for prolonged periods, and moisture.
- Disconnect power before cleaning or performing any maintenance.

3. PACKAGE CONTENTS

Verify that all items are present in your package:

- APHQUA 10.26-inch CarPlay Display with Dashcam
- Reversing Camera (1080p)
- 6-meter Camera Cable
- Car Charger (Type-C 5V 2A)
- 3.5mm Audio Cable (AUX)
- 64GB TF Card
- Stand Bracket (Dashboard Mount)
- User Manual

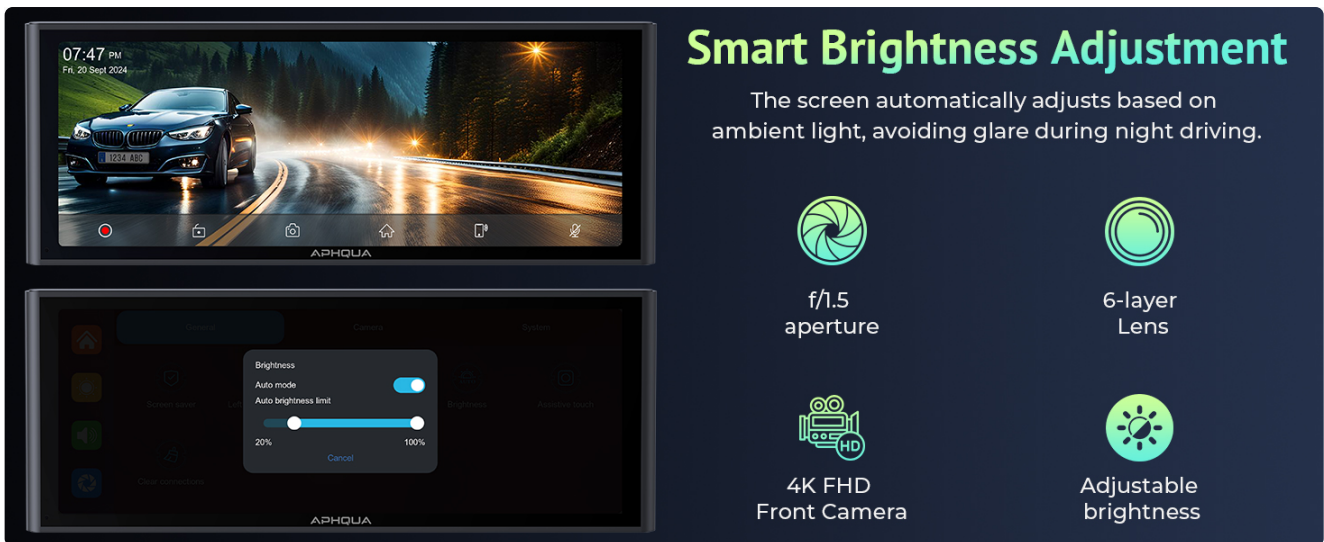


Figure 3.1: APHQUA A97 Package Contents

4. SETUP & INSTALLATION

4.1 Mounting the Display

The APHQUA A97 comes with a stand bracket for dashboard mounting. A suction cup bracket may be available by contacting after-sales support.

1. **Attach the Stand Bracket:** Securely attach the stand bracket to the back of the CarPlay screen.
2. **Position on Dashboard:** Place the display with the attached stand on a flat, stable surface of your dashboard. Ensure it does not obstruct your view or interfere with airbags.
3. **Adjust Angle:** Adjust the angle of the display for optimal viewing.



Figure 4.1: Display Mounting Steps

4.2 Connecting Power

Connect the provided car charger to the Type-C port on the display and plug the other end into your vehicle's cigarette lighter socket. Ensure the power supply is at least 5V 2.5A/5V 3A for stable operation. Using the original APHQUA car charger is recommended for optimal FM transmission performance.

4.3 Installing the Rear Camera

The 1080p rear camera includes a 6-meter cable. Connect the camera to the 2.5mm jack on the main unit. Route

the cable carefully to the rear of your vehicle. The camera feed will automatically display when reversing.

5. OPERATING INSTRUCTIONS

5.1 Power On/Off

The device will power on automatically when connected to power and your vehicle starts. To power off, disconnect the power cable or use the power button if available.

5.2 Touchscreen Interface

The 10.26-inch HD IPS capacitive touchscreen (9.3-inch inner screen) provides intuitive control. Navigate through menus and applications by tapping and swiping.

5.3 Wireless Connectivity (CarPlay & Android Auto)

The APHQUA A97 supports wireless Apple CarPlay (for iOS 6 and above) and Android Auto (for Android 11 and above).

1. **Enable Bluetooth and Wi-Fi:** On your smartphone, turn on Bluetooth and Wi-Fi.
2. **Connect Bluetooth:** Pair your phone with the APHQUA A97 via Bluetooth.
3. **Initiate CarPlay/Android Auto:** Once connected, CarPlay or Android Auto will launch automatically on the display, mirroring your phone's interface for navigation, messaging, calls, and music.

Wireless Apple Carplay & Android Auto



Figure 5.1: Wireless CarPlay and Android Auto Connectivity

Package List

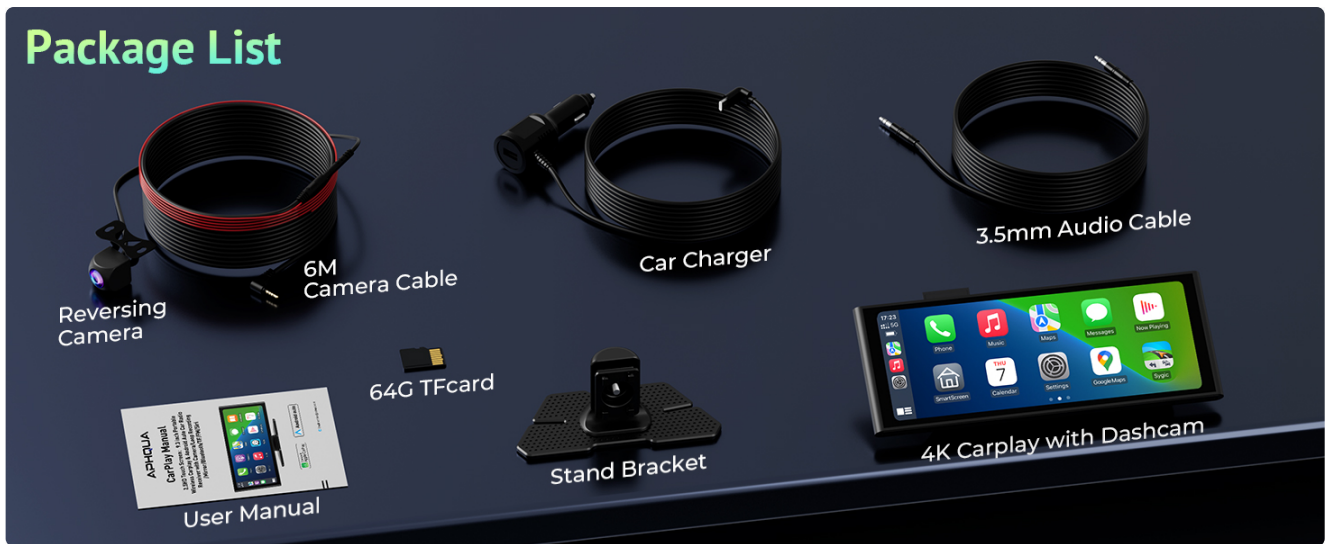


Figure 5.2: Wireless Smartphone Integration

5.4 Smart Voice Control (Siri & Google Assistant)

Utilize the built-in microphone for hands-free voice commands. Activate Siri or Google Assistant to control music, make calls, get directions, and more.

- Say "Hey Siri" or "OK Google" to activate.
- Issue commands like "Play music," "Call [Contact Name]," or "Navigate to [Destination]."

Siri / Google Voice Control



Hey Siri, Navigate to the nearest coffee shop



OK Google. Play my favorite music

Figure 5.3: Siri and Google Voice Control

Easy to Install & Installation Steps

If you need a suction bracket, contact after-sales support



Figure 5.4: Hands-Free Voice Commands

5.5 Real-time Maps Navigation

Access real-time GPS navigation through popular apps like Google Maps and Waze directly on the APHQUA A97 screen via CarPlay or Android Auto.

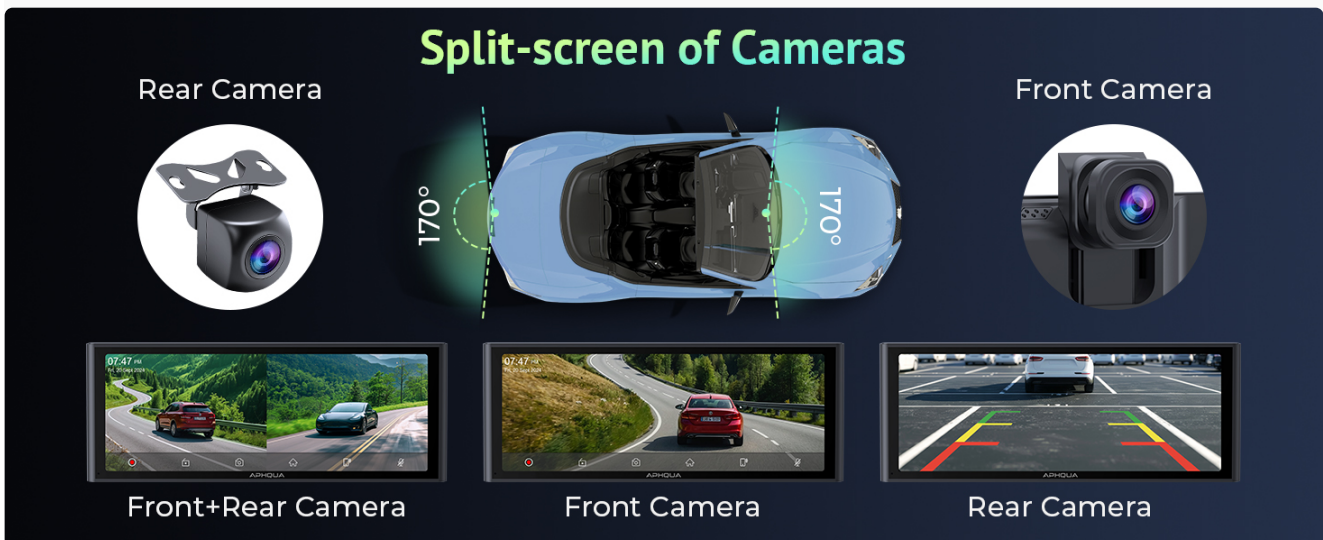


Figure 5.5: Online Map Navigation

5.6 Audio Output Options

The APHQUA A97 offers multiple ways to output audio:

- **Built-in Speaker:** Audio plays directly from the device's integrated speakers.
- **Bluetooth Audio:** Connect your phone to your car's original stereo via Bluetooth for audio playback through your car's speakers.
- **FM Transmitter:** Tune the APHQUA A97 to an unused FM frequency, then tune your car's radio to the same frequency to play audio through your car's speakers.
- **AUX (3.5mm) Connection:** Use the provided 3.5mm audio cable to connect the APHQUA A97 to your car's AUX input for direct audio output.

Upgrade Bluetooth 5.0 Stereo

Connect Car Speaker via BT / WIFI



Connect Car Speaker via AUX Cable



Connect Car Speaker via FM Transmission



Built-in Speaker



Figure 5.6: Audio Output Methods

Upgrade to 4K Night Vision

With our 4K front camera and 1080p rearview camera's night vision capability, successfully and clearly capture the situation outside the vehicle



Figure 5.7: Upgraded Bluetooth 5.0 Audio

5.7 Mirror Link (Super Link & Airplay)

Mirror content from your smartphone directly to the APHQUA A97 display.

- **Airplay (iPhone):** For iPhone users, mirror audio, videos, games, and apps.
- **Super Link (iOS/Android):** Mirror your phone's screen to the device. For online video playback, you may need to download the Evelink app. [Download Evelink App](#)

Loop Recording & G-sensor

Built-in 4K front camera and 64G TF Card, when detects a sudden shock or collision, the camera will automatically lock video and can achieve continues recording.



Insert TF card to use G-sensor and enable loop recording



Figure 5.8: Super Link Functionality

4K+1080P Front & Rear

High Definition Dual Camera



4K Front Camera



G-sensor

HD

1080P Backup Camera



Parking Assistant

Dual Recording



Reverse View



1080P Rear Camera



4K Front Camera

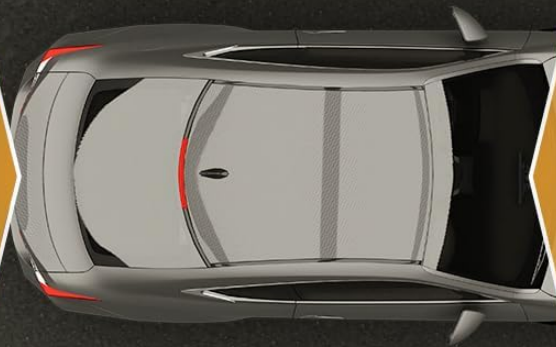
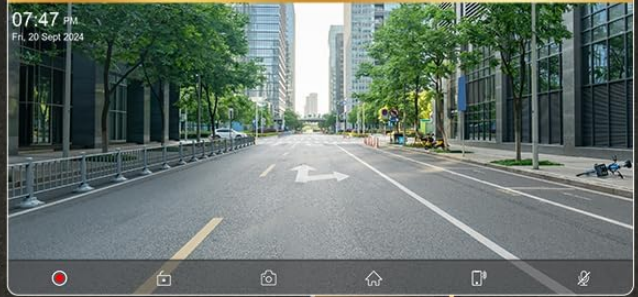


Figure 5.9: Wireless Mirror Link Setup

Supports Front Camera Adjustment

You can easily adjust the camera angle to suit your preferences, fine-tuning up, down, left, and right to ensure optimal visibility and road safety



Figure 5.10: Portable CarPlay Screen with Mirror Link

5.8 Dash Cam & Recording

The APHQUA A97 features a 4K front dash cam and a 1080p waterproof rear camera for dual recording.

- **Loop Recording:** Continuously records footage, overwriting the oldest files when the TF card is full.
- **G-sensor:** Automatically detects sudden shocks or collisions and locks the current video file to prevent it from being overwritten.
- **TF Card:** A 64GB TF card is included for storing camera data. Note that the TF card is specifically for camera data and cannot be used to play music or videos directly on the device.
- **Adjustable Front Camera:** The front camera angle can be adjusted vertically, horizontally, and rotated to record inside the car.
- **Rear Camera:** Provides a 170° wide-angle view with adjustable reverse lines for safer parking.



Online Video: Direct playback of APP online videos on the device

Air Drop : View videos and pictures from your phone



Super Link-EVELINK



Online Video: Direct playback of APP online videos on the device

Mirror casting: Mirror your phone's screen to your device

Air Drop : View videos and pictures from your phone

Figure 5.11: Loop Recording & G-sensor

Wiress-Mirror Link

1. Turn on Bluetooth and WiFi in settings.
2. Connect only to Aphqua Screen WiFi; keep Bluetooth on
3. Select "Screen Mirroring" in the control center.
4. Click "aphqua-xxxx" for wireless mirroring.



Instagram



Twitter



TikTok



YouTube



Amazon
Prime video



Apple
Airplay

Figure 5.12: 4K Front & 1080P Rear Cameras



Figure 5.13: Dual Recording View



Figure 5.14: Front Camera Adjustment



Figure 5.15: 1080P Rear View Camera

Online Map Navigation

Real-time online navigation on your screen to guide you



Figure 5.16: Split-screen Camera Views

Portable Car Play Screen with Mirror Link

Advanced 1600x600 HD Capacitive Screen



WiFi 5GHz



Sync Phone Video

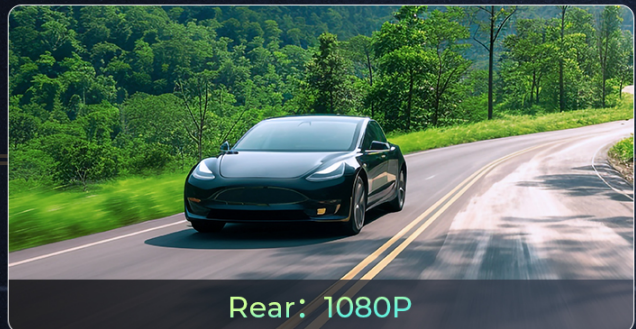


Figure 5.17: 4K Night Vision

4K +1080P Dual Recording



Front: 4K Dash Cam



Rear: 1080P

170°



170°

Figure 5.18: 64GB TF Card Inclusion

5.9 Split-screen Functions

The device supports split-screen mode for CarPlay and Android Auto, allowing you to view multiple applications simultaneously, such as navigation and music playback.

Includes 64GB TF Card and Video Recordin

With a 64GB TF card, Apple CarPlay can store more videos and music, making it perfect for capturing all your exciting trips or scenic drives anytime, anywhere



Figure 5.19: Split-screen Functionality

5.10 Smart Brightness Adjustment

The screen automatically adjusts its brightness based on ambient light conditions to prevent glare during day or night driving. You can also set a custom range for automatic brightness adjustment (0% to 100%).

Loop Recording & G-sensor

Built-in 4K front camera and 64G TF Card, when detects a sudden shock or collision, the camera will automatically lock video and can achieve continues recording.



Insert TF card to use G-sensor and enable loop recording



Figure 5.20: Smart Brightness Adjustment

Siri / GoogleVoice Control

Allows You to Make Hands-free Calls Smoothly



Figure 5.21: Automatic Brightness Adjustment

6. MAINTENANCE

- **Cleaning:** Use a soft, dry cloth to clean the screen and device exterior. Avoid abrasive cleaners or solvents.
- **Software Updates:** Check the manufacturer's website periodically for firmware updates to ensure optimal performance and new features.
- **TF Card Management:** Regularly back up important dash cam footage from the TF card to another storage device. Format the TF card periodically to maintain performance.

7. TROUBLESHOOTING

- **Device Not Powering On:** Ensure the car charger is securely plugged into both the device and the vehicle's cigarette lighter. Check the vehicle's fuse for the cigarette lighter socket. Verify the power supply meets the minimum requirement (5V 2.5A/5V 3A).
- **No Audio Output:** Check your selected audio output mode (Speaker, BT Audio, FM, AUX). If using FM, ensure the frequency matches your car radio and there is no interference. If using AUX, ensure the cable is properly connected.
- **CarPlay/Android Auto Not Connecting:** Ensure Bluetooth and Wi-Fi are enabled on your phone. Forget previous Bluetooth connections and re-pair. Update your phone's operating system if necessary.
- **Dash Cam Not Recording:** Ensure the 64GB TF card is correctly inserted. Check the camera settings for loop recording and G-sensor activation. Format the TF card if issues persist.
- **Screen Glare:** Adjust the brightness settings manually or rely on the automatic light sensing feature.

8. SPECIFICATIONS

Feature	Specification
Product Dimensions	0.98 x 9.45 x 4.72 inches
Item Weight	2.33 pounds
Display Size	10.26 inches (9.3 inches inner screen)

Display Resolution	1600x600 HD IPS
Front Camera Resolution	4K
Rear Camera Resolution	1080P
Connectivity Technologies	Bluetooth 5.0, Wireless (Wi-Fi), FM, AUX
Special Features	Apple CarPlay, Android Auto, Airplay, Super Link, Automatic Light Sensing, GPS Navigation, SD Card Input, Voice Control (Siri/Google Assistant)
Included Storage	64GB TF Card
Power Input	Type-C 5V 2.5A/5V 3A (via cigarette lighter)
Voltage Range	12-24V
Mounting Type	Dashboard Mount
Compatible Vehicle Types	Cars, RVs, SUVs, Pickups, Trucks

9. WARRANTY & SUPPORT

APHQUA is committed to providing high-quality products and satisfactory services.

- **Customer Service:** 24-hour response time for inquiries and support.
- **Return/Exchange Policy:** 90 days for returns or exchanges.
- **After-Sale Service:** Lifetime after-sale service for products and accessories.

For further assistance, please contact APHQUA customer support.