

## ninetom 2025

# NINETOM 12.3" Ultra-Narrow Touchscreen Receiver User Manual

Model: 2025 - Compatible with Audi Q3 (2013–2018) with 3G MMI+ and RMC Systems

## 1. INTRODUCTION

This manual provides detailed instructions for the installation, operation, and maintenance of your NINETOM 12.3-inch Ultra-Narrow Touchscreen Receiver. This device is designed to enhance your driving experience by integrating modern connectivity features while retaining your vehicle's original functionalities.

**Important Compatibility Note:** This touchscreen is compatible only with Audi Q3 models manufactured between 2013 and 2018 that are equipped with 3G MMI+ and RMC Systems. It is not compatible with other systems. Please verify your car's system before proceeding with installation or use. The unit operates on a Linux system, ensuring stable performance without freezing or lag during extended use.

## 2. PRODUCT FEATURES

The NINETOM 12.3" Ultra-Narrow Touchscreen Receiver offers a range of advanced features:

- **Upgraded 12.3" HD Touchscreen:** Features a high-definition 1920×720 IPS display with ultra-narrow bezels and a premium aluminum body. IN-CELL full lamination technology enhances clarity, and an anti-reflection layer reduces glare by up to 75%.
- **Built-in Wired & Wireless CarPlay/Android Auto:** Supports both wired and wireless connectivity for GPS, calls, messages, music, and more via Siri or touch. Includes hands-free operation for navigation, contacts, and notifications.
- **Screen Mirroring:** Supports screen mirroring for videos, maps, and other smartphone features on your car display.
- **Supports Original Functions:** Retains all original car functions, including radio, amplifier, joystick controls, and reversing camera, without altering the vehicle's software.
- **Dual System Switching:** Easily switch between the Linux interface and your car's original system with

one click.



Image: Comparison of the 1920x720 resolution screen with older, lower-resolution screens.

Video: A comparison between the new 12.3-inch ultra-thin screen and an older, ordinary screen, highlighting the design differences.

### 3. SETUP AND INSTALLATION

Professional installation is recommended if you are unsure about the process. Installation will not damage original wiring or affect your factory warranty. Dashboard removal is needed for wiring. Test all functions before reassembly.

#### 3.1 Compatibility Check

Before installation, confirm your vehicle's compatibility:

# 12.3-Inch Car Radio Touchscreen , Compatible with Audi Q3 (2013 - 2018) with 3G MMI+ and RMC Systems



Before installation



After installation



CarPlay



Android Auto



12.3 inch



1920\*720



USB



Linux System



BT Audio

Image: Step-by-step guide to verify Audi Q3 compatibility with 3G MMI+ or RMC systems.

## 3.2 Installation Process Overview

The installation involves removing the original screen, connecting the new unit, and routing cables. Refer to the detailed installation video for visual guidance.

Video: Detailed instructions on how to install the touchscreen CarPlay Auto for an Audi vehicle.

## 3.3 Accessories Included

The product comes with all necessary accessories for installation:

# Compatible with Audi Q3 (2013-2018) with 3G MMI+ and RMC Systems

**Step 1:** Please compare your original dashboard with the image shown below.

<b>MODEL</b>	Q3
<b>CAR SYSTEM</b>	3G MMI+ / RMC
<b>YEAR</b>	2013-2018



**Step 2:** Please confirm that your original car system matches one of the following:

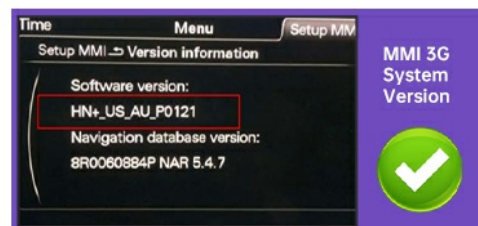


Image: List of product accessories, including the screen, mounting bracket, power cable, installation tools, AMI cable, and

## 4. OPERATING INSTRUCTIONS

### 4.1 System Switching

The device allows seamless switching between the new Linux interface and your car's original system. This ensures you retain access to all factory functions while enjoying the new features.



Image: Visual guide for switching between the Linux system and the original factory system.

### 4.2 CarPlay and Android Auto

Connect your smartphone via wired or wireless CarPlay/Android Auto for navigation, communication, and entertainment.



Image: Display of CarPlay, Android Auto, and Mirror Link functionalities.

Video: Guide on how to set up Wireless CarPlay on your Audi with the NINETOM display.

Video: Instructions for setting up AirPlay functionality on your Audi with the NINETOM display.

### 4.3 Camera Functionality

The system supports both factory original reverse cameras and parking radar, as well as aftermarket reverse cameras. Note that it does not support aftermarket front cameras.

## Support Wireless / Wired Carplay & Android Auto

Wireless connection via Bluetooth or wired connection via USB cable allows you to use your iPhone apps on the screen. This includes accessing online maps, listening to music, and making phone calls

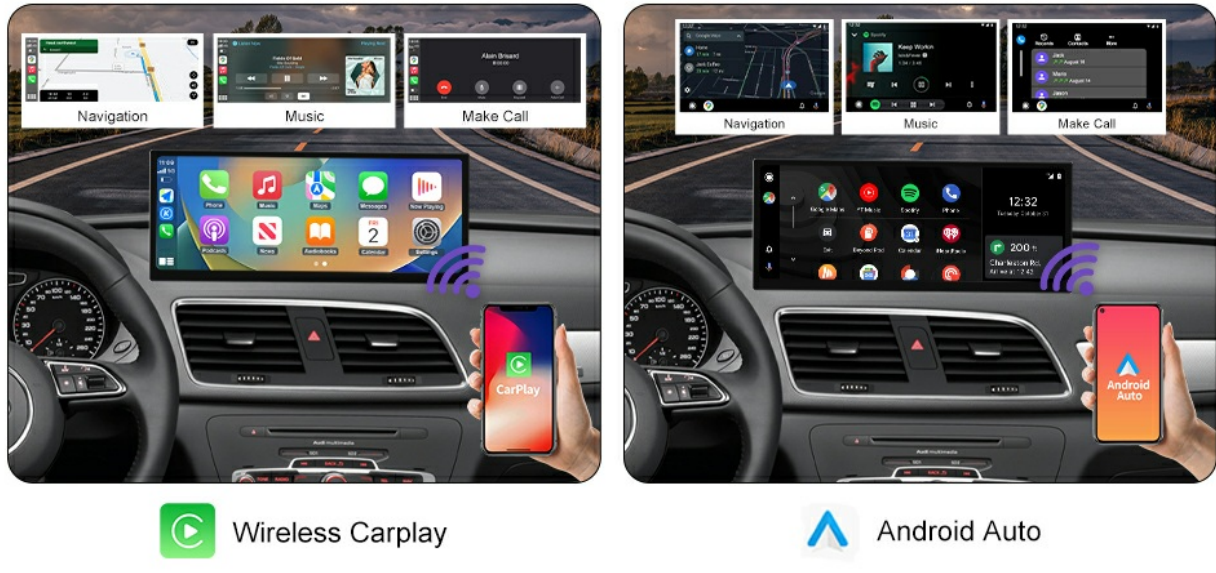


Image: Demonstration of the camera function, displaying parking aid lines.

## 5. MAINTENANCE

To ensure the longevity and optimal performance of your NINETOM touchscreen receiver, follow these maintenance guidelines:

- **Cleaning:** Use a soft, lint-free cloth to gently wipe the screen. For stubborn smudges, slightly dampen the cloth with water or a screen-safe cleaner. Avoid harsh chemicals or abrasive materials.
- **Temperature:** Avoid exposing the device to extreme temperatures. Prolonged exposure to direct sunlight or very cold conditions can affect performance and lifespan.
- **Software Updates:** Periodically check for and install any available software updates to ensure optimal functionality and access to the latest features.
- **Cable Connections:** Ensure all cables are securely connected. Loose connections can lead to intermittent issues.

## 6. TROUBLESHOOTING

Most issues can be resolved by checking cable connections and settings. If you encounter problems, refer to the following common troubleshooting steps:

- **Screen Not Turning On:** Check all power cable connections. Ensure the vehicle's ignition is on.
- **Incorrect Display/Resolution:** Access the 'Car Settings' menu and adjust the 'Original Car's Screen Resolution' to match your vehicle's native display. Incorrect resolution can cause display issues.
- **CarPlay/Android Auto Connectivity Issues:** Ensure your phone's Wi-Fi and Bluetooth are enabled. Confirm the correct Bluetooth device name for pairing. For wired connections, ensure the USB cable is functioning correctly.
- **No Audio:** Verify that the audio output settings are correctly configured (e.g., Bluetooth, AUX). Check

the volume levels on both the device and your car's audio system.

- **System Freezing/Lagging:** Restart the device by turning off and on your vehicle's ignition. Ensure all connections are secure.

If issues persist, please contact NINETOM customer support for assistance.

## 7. SPECIFICATIONS

Feature	Detail
Model Number	2025
Screen Size	12.3 inches
Display Resolution	1920×720 IPS
Operating System	Linux
Connectivity Technology	Bluetooth, USB
Compatible Devices	Smartphone, Laptop
Item Weight	5.81 pounds (2.64 Kilograms)
Package Dimensions	13.31 x 7.91 x 6.18 inches
Video Encoding	H.264, H.265/HEVC

## 8. WARRANTY AND SUPPORT

Your NINETOM 12.3" Ultra-Narrow Touchscreen Receiver comes with a **1-Year Warranty**.

For any questions, installation assistance, or troubleshooting, please contact our support team. Our team has extensive experience and can help resolve most issues, particularly those related to cable or setting errors. We are ready to assist before and after each purchase.

You can visit the NINETOM store on Amazon or use the contact information provided with your product for support.

---

Video: An introduction to the 12.3-inch Linux Touchscreen for Audi Q3 3G MMI System, showcasing its features and design.