

Manuals+

[Q & A](#) | [Deep Search](#) | [Upload](#)

manuals.plus /

› [OBARTER](#) /

› [OBARTER X7 Electric Scooter User Manual](#)

OBARTER OBARTER US-X7-Black Knight

OBARTER X7 Electric Scooter User Manual

Model: OBARTER US-X7-Black Knight

Brand: OBARTER

1. PRODUCT OVERVIEW

The OBARTER X7 Electric Scooter is a high-performance, dual-motor electric scooter designed for adult riders seeking speed, range, and versatility across various terrains. Featuring an 8000W dual motor system and a 60V 40Ah battery, it offers impressive acceleration and a long-lasting ride. Its robust construction, 14-inch all-terrain tires, and advanced suspension ensure a smooth and stable experience, whether on city streets or off-road trails. Integrated safety features like dual hydraulic disc brakes and comprehensive LED lighting enhance rider confidence and visibility.



Figure 1: OBARTER X7 Electric Scooter with included accessories like charger, tools, and phone holder.

2. SETUP AND INITIAL PREPARATION

2.1 Unboxing and Inspection

Carefully remove all components from the packaging. Inspect the scooter and accessories for any signs of damage during transit. Report any damage to your retailer immediately.

2.2 Assembly

1. **Handlebar Installation:** Attach the handlebar to the stem, ensuring all bolts are securely tightened. Refer to the included hardware kit for specific fasteners.

2. **Seat Attachment (Optional):** If your model includes a seat, follow the instructions to securely mount it to the designated area on the deck.
3. **Pre-Ride Checks:** Before the first ride, ensure all connections are secure, tires are properly inflated (refer to specifications for recommended pressure), and brakes are functioning correctly.

2.3 Initial Battery Charging

The scooter's 60V 40Ah lithium battery should be fully charged before its first use. Connect the charger to the scooter's charging port and then to a standard power outlet. The charging indicator on the charger will change (e.g., from red to green) when charging is complete. Initial charging typically takes 8-10 hours.



Figure 2: The OBARTER X7 Electric Scooter being charged, showcasing its 60V 40Ah large capacity lithium battery and UL 2272 certification.

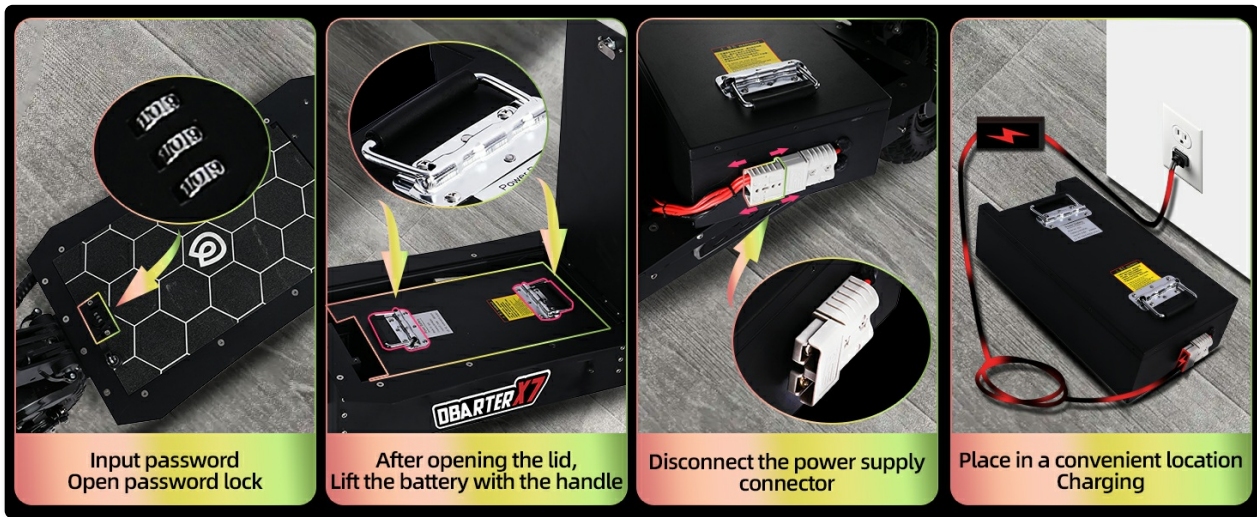


Figure 3: A four-step guide illustrating how to remove and charge the battery of the OBARTER X7 Electric Scooter.

3. OPERATING INSTRUCTIONS

3.1 Powering On/Off

To power on the scooter, press and hold the power button on the LCD display. To power off, press and hold the power button again until the display shuts down.

3.2 LCD Display and Controls

The integrated LCD display provides real-time information including speed, battery level, and mileage. Use the control buttons near the display to switch between riding modes (e.g., single motor, dual motor) and adjust settings.



Figure 4: A view of the OBARTER X7 Electric Scooter's LCD display dashboard from the rider's perspective, showing real-time speed, battery, and voltage information.

3.3 Riding Modes and Performance

The OBARTER X7 features an 8000W dual motor system, allowing for powerful acceleration and a top speed of 56 MPH. Riders can select between single and dual motor modes for varying power and range needs. The scooter is designed for both urban commuting and off-road adventures, thanks to its robust tires and advanced suspension.



Figure 5: Close-up of the OBARTER X7 Electric Scooter's rear wheel and motor, emphasizing its 8000W high-power dual brushless motor system.



Figure 6: A detailed view of the 14-inch off-road inflatable tire of the OBARTER X7 Electric Scooter, with icons indicating suitability for sand, lawn, muddy, and asphalt roads.

3.4 Braking System

The scooter is equipped with dual hydraulic disc brakes for reliable and responsive stopping power. Always apply both brakes simultaneously for optimal control and safety. Familiarize yourself with the braking performance in a safe, open area before riding in traffic.



Figure 7: Visual representation of the double front and double rear hydraulic shock absorbers on the OBARTER X7 Electric Scooter.

3.5 Folding Mechanism

The OBARTER X7 is designed to be foldable for convenient storage and transport. Locate the folding latch mechanism on the stem. Follow the specific instructions in the quick start guide to safely fold and unfold the scooter. Ensure the latch is fully engaged and secure before riding.

4. MAINTENANCE AND CARE

4.1 Battery Care

- Charge the battery fully after each use, especially if storing for extended periods.
- Avoid completely draining the battery, as this can reduce its lifespan.
- Store the scooter and battery in a cool, dry place away from direct sunlight and extreme temperatures.

4.2 Tire Maintenance

- Regularly check tire pressure. Maintain recommended PSI for optimal performance and safety.

- Inspect tires for wear, punctures, or damage before each ride.

4.3 Brake System Inspection

- Periodically check brake levers for proper tension and responsiveness.
- Inspect brake pads for wear and replace them if necessary.

4.4 Cleaning and Storage

- Clean the scooter with a damp cloth. Avoid using high-pressure water or harsh chemicals.
- Store the scooter indoors in a dry environment to prevent corrosion and damage.

5. TROUBLESHOOTING

This section addresses common issues you might encounter with your OBARTER X7 Electric Scooter. For more complex problems, please contact customer support.

Problem	Possible Cause	Solution
Scooter does not power on	Low battery; loose battery connection; faulty power button	Charge battery fully; check battery connections; contact support
Reduced range or power	Under-inflated tires; heavy load; uphill riding; cold weather; aging battery	Inflate tires to correct PSI; reduce load; ride on flatter terrain; ensure full charge; consider battery replacement if old
Brakes feel weak or spongy	Worn brake pads; air in hydraulic line; misaligned calipers	Inspect and replace brake pads; bleed hydraulic system (professional recommended); adjust calipers
Unusual noises during operation	Loose components; debris in wheels/motor; worn bearings	Check all fasteners; clear debris; contact support for inspection

6. SPECIFICATIONS

Feature	Detail
Brand	OBARTER
Model Name	OBARTER US-X7-Black Knight
Motor Power	8000W Dual Motor System
Top Speed	Up to 56 MPH
Battery	60V 40Ah Lithium Battery (UL 2272 Certified)
Max Range	About 80-100 km/h (approx. 50-62 miles)
Tires	14-inch Off-Road Inflatable Tires (Pneumatic, Anti-Explosion)

Feature	Detail
Braking System	Dual Hydraulic Disc Brakes
Suspension	Double Front and Double Rear Hydraulic Shock Absorbers
Weight Limit	220 Pounds
Product Dimensions (LxWxH)	61" x 28" x 53.3"
Special Features	Foldable, LCD Display, LED Lights, Ergonomic Design
Manufacturer	Dongguan Lukang Energy Saving Technology Co., LTD
Model Year	2025

7. OFFICIAL PRODUCT VIDEOS

Your browser does not support the video tag.

Video 1: Official product video showcasing the OBARTER X7 8000W Dual Motor Electric Scooter in action, highlighting its performance and features. (Duration: 1:59)

8. WARRANTY AND SUPPORT

Your OBARTER X7 Electric Scooter comes with a manufacturer's warranty covering defects in materials and workmanship. Please refer to the warranty card included in your packaging for specific terms, conditions, and duration. For technical support, warranty claims, or replacement parts, please contact OBARTER customer service through the contact information provided on your warranty card or the official OBARTER website.

It is recommended to register your product online to facilitate warranty service and receive important product updates.