

Hapivida Hapivida7ormfykb5v-12

Hapivida Electric Thumb Throttle Accelerator User Manual

Model: Hapivida7ormfykb5v-12

1. INTRODUCTION

Thank you for choosing the Hapivida Electric Thumb Throttle Accelerator. This product is designed as a high-quality replacement part for G30 Max electric scooters, offering precise speed control and enhanced riding comfort. This manual provides essential information for proper installation, operation, and maintenance to ensure optimal performance and longevity of your new throttle.

2. PRODUCT OVERVIEW

The Hapivida Electric Thumb Throttle Accelerator is a durable plastic component that allows for sensitive and responsive speed adjustments on compatible electric scooters. Its ergonomic design ensures comfortable handling during use.

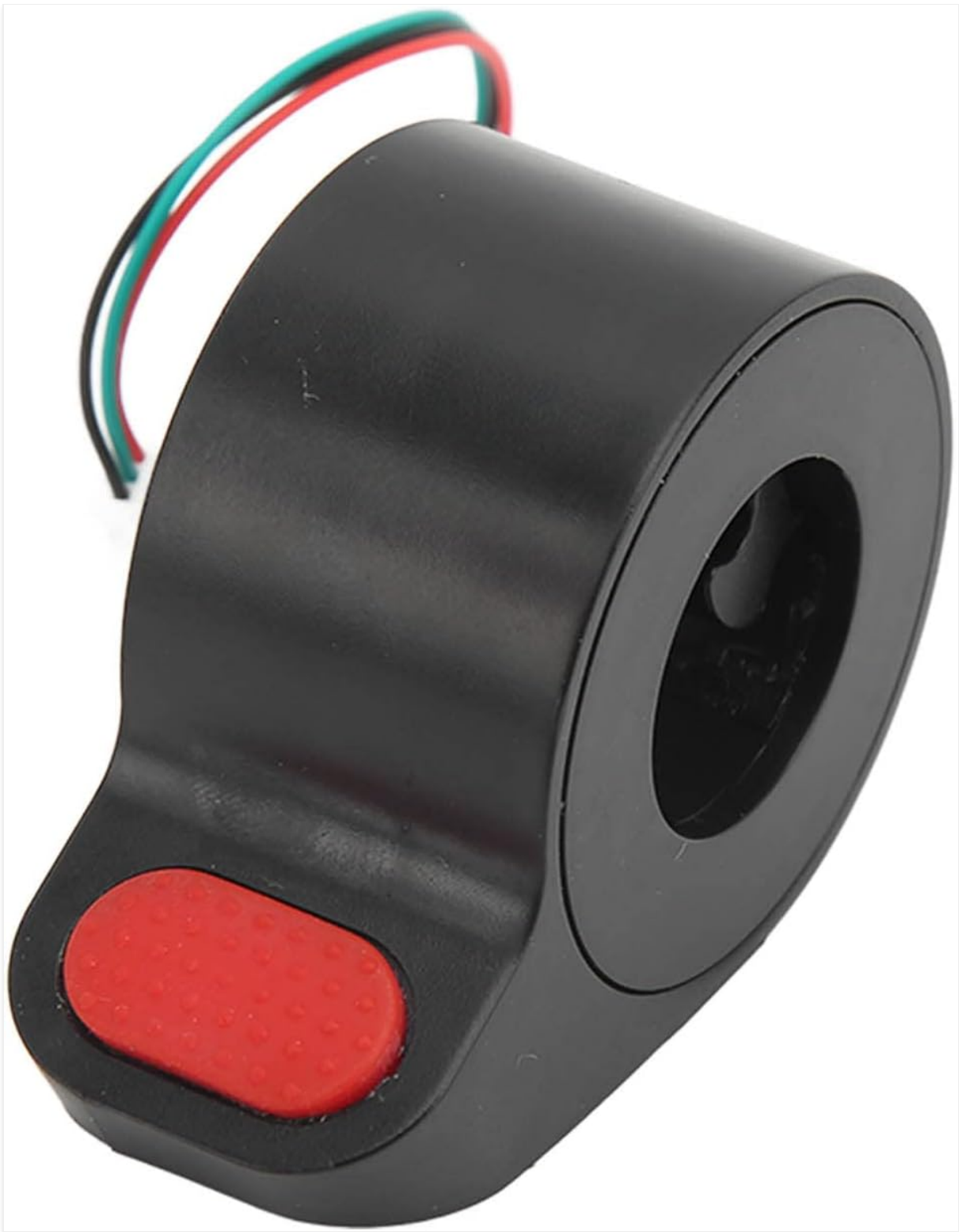


Figure 2.1: Front view of the Hapivida Electric Thumb Throttle Accelerator.



Figure 2.2: Angled view showing the throttle mechanism and wiring connector.

3. FEATURES

- **High Sensitivity:** The throttle controller offers high sensitivity, allowing for quick and precise acceleration or deceleration. This enables flexible control for navigating pedestrians or speed bumps effectively.
- **Ergonomic Design:** Designed with raised anti-slip particles, the thumb lever provides a comfortable grip, enhancing friction and maintaining solid control even on uneven roads.
- **Replacement Accessory:** This throttle is a direct replacement for old or damaged electric scooter accessories, specifically compatible with the G30 Max electric scooter, ensuring proper throttle function.

and improved overall scooter performance.

- **Quick Installation:** The throttle is designed for easy installation and disassembly. It features a waterproof connector that can be quickly inserted, ensuring a secure connection that resists loosening or falling off, even in adverse weather conditions.
- **Durable Plastic Material:** Constructed from robust plastic with exceptional craftsmanship, the throttle features smooth edges and a sturdy build. It is resistant to wear, impact, and collision, ensuring long-term durability.

4. SPECIFICATIONS

Attribute	Value
Item Type	Electric Thumb Throttle Accelerator
Material	Plastic
Weight	Approx. 41g (1.4 oz)
Product Dimensions	7 x 5 x 5 cm
Color	Red
Model Number	Hapivida7ormfykb5v-12
Compatibility	G30 Max E-Scooter

5. SETUP AND INSTALLATION

The Hapivida Electric Thumb Throttle is designed for straightforward installation. Follow these general steps for replacement:

1. **Preparation:** Ensure your e-scooter is powered off and disconnected from any power source before beginning installation.
2. **Removal of Old Throttle:** Carefully disconnect the wiring of the existing throttle. Depending on your scooter model, this may involve unscrewing a few fasteners.
3. **Installation of New Throttle:** Position the new Hapivida throttle on the handlebar. Connect the waterproof connector firmly to the corresponding port on your scooter's wiring harness. Ensure the connection is secure and fully seated.
4. **Securing the Throttle:** Fasten the throttle securely to the handlebar using the appropriate screws or clamps (not included, use existing hardware if applicable). Ensure it is stable and does not rotate freely.
5. **Testing:** After installation, power on your e-scooter and perform a functional test of the throttle to ensure it responds correctly to input before riding.

Electric Scooter Accelerator

It is made of high quality plastic materials, which are durable, wear resistant and fall resistant, and can be used for a long time.



Figure 5.1: Detail of the throttle's wiring and waterproof connector, crucial for quick installation.

6. OPERATING INSTRUCTIONS

The Hapivida Electric Thumb Throttle provides intuitive speed control for your e-scooter. To operate:

- **Acceleration:** Gently press the thumb lever forward to increase speed. The high sensitivity of the throttle allows for smooth and responsive acceleration.
- **Deceleration:** Release the thumb lever to reduce speed. For immediate deceleration or braking, refer to your e-scooter's specific braking system instructions.
- **Maintaining Speed:** Apply consistent pressure to the thumb lever to maintain a desired speed.

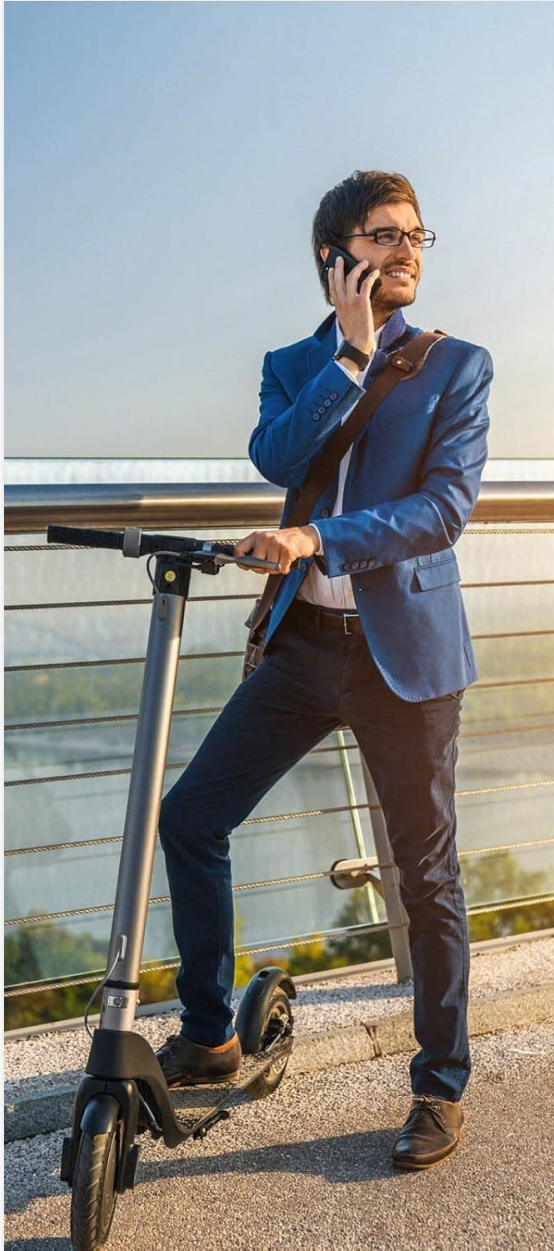
Always operate your e-scooter responsibly and in accordance with local traffic laws and safety guidelines.



Electric Scooter Accessory

Plastic grip feels comfortable and won't hurt your hand. The thumb accelerator of scooter has high elasticity and is more comfortable to drive.

Figure 6.1: The throttle in use on an e-scooter, demonstrating its ergonomic design and integration.



Scooter Throttle Knob

Electric scooter speed thumb accelerator is suitable for Xiaomi electric scooter. It is an ideal accessory for your scooter.



Figure 6.2: The throttle knob integrated into the e-scooter's handlebar for intuitive speed control.

7. MAINTENANCE

The Hapivida Electric Thumb Throttle is constructed from durable plastic designed for long-term use with minimal maintenance. To ensure its continued performance:

- **Cleaning:** Wipe the throttle surface with a soft, damp cloth to remove dust and dirt. Avoid using harsh chemicals or abrasive cleaners.
- **Connection Check:** Periodically inspect the waterproof connector to ensure it remains securely attached and free from corrosion or damage.
- **Physical Inspection:** Check for any signs of physical damage, cracks, or excessive wear. While the material is robust, severe impacts can cause damage.
- **Storage:** If storing your e-scooter for an extended period, ensure it is kept in a dry, temperate environment to protect all electronic components, including the throttle.

8. TROUBLESHOOTING

If you experience issues with your Hapivida Electric Thumb Throttle, consider the following common

troubleshooting steps:

- **Throttle Not Responding:**

- Ensure the e-scooter is powered on.
- Check the connection of the throttle's wiring harness. Disconnect and reconnect to ensure a firm connection.
- Verify that there is no physical obstruction preventing the thumb lever from moving freely.

- **Intermittent Operation:**

- Inspect the wiring for any signs of fraying or damage.
- Ensure the waterproof connector is fully seated and not loose.

- **Physical Damage:** If the throttle housing or lever is cracked or broken, it may need to be replaced.

If problems persist after attempting these steps, it is recommended to consult a qualified e-scooter technician or contact customer support.

9. PACKAGE CONTENTS

The package for the Hapivida Electric Thumb Throttle Accelerator includes:

- 1 x Electric Scooter Thumb Throttle Accelerator (Red)

10. WARRANTY AND SUPPORT

Hapivida products are manufactured to high standards. For any questions regarding your Electric Thumb Throttle Accelerator, or for support with installation or troubleshooting, please refer to the seller's return policy and contact information provided at the point of purchase. Keep your purchase receipt for any warranty claims.