

Manuals.plus /

› Jugeman /

› Jugeman P131 Smartwatch GPS User Manual

## Jugeman P131

# Jugeman P131 Smartwatch GPS User Manual

Model: P131

## INTRODUCTION

---

Welcome to the Jugeman P131 Smartwatch GPS user manual. This guide provides detailed instructions on how to set up, operate, and maintain your new smartwatch. The Jugeman P131 features a 2.06" AMOLED display, 5ATM water resistance, integrated GPS, and comprehensive health and fitness tracking capabilities. Please read this manual thoroughly to ensure optimal performance and longevity of your device.



Image: Jugeman P131 Smartwatch highlighting its key features: 2.06" AMOLED screen, 5ATM waterproof, and GPS positioning.

## WHAT'S IN THE BOX

---

Upon opening the package, please ensure all components are present:

- Jugeman P131 Smartwatch (with strap)
- Charging Cable
- User Manual

# Dimensioni dell'orologio



Image: Contents of the Jugeman P131 Smartwatch package, including the watch, charging cable, and user manual.

## SETUP

### 1. Charging the Smartwatch

Before initial use, fully charge your Jugeman P131 Smartwatch.

1. Connect the magnetic charging cable to the charging contacts on the back of the smartwatch.
2. Plug the USB end of the cable into a standard USB power adapter (not included) or a computer's USB port.
3. The watch display will indicate charging status. A full charge typically takes approximately 2.5 hours.

# 5ATM Impermeabile



Piovere



Nuotare



Lavarsi  
le mani



## Eccezionale Durata della batteria

**2.5** H  
Tempo di ricarica

**7** Days  
Utilizzo tipico

**30** Days  
Tempo di standby

Image: The smartwatch connected to its charging cable, illustrating the charging process and battery life information. Typical usage is 7 days, standby time up to 30 days, and charging time is 2.5 hours.

## 2. App Installation and Pairing

To unlock the full potential of your smartwatch, download and install the companion app on your smartphone.

1. **Enable Bluetooth:** On your smartphone, navigate to settings and ensure Bluetooth is enabled.
2. **Download App:** Scan the QR code provided in the manual or search for "GloryfitPro" in your smartphone's app store (Google Play Store for Android, Apple App Store for iOS).
3. **Open App:** Launch the "GloryfitPro" app and follow the on-screen instructions to create an account or log in.
4. **Add Device:** Within the app, select "Add Device" or a similar option. The app will search for nearby devices.
5. **Select Smartwatch:** Locate and select "P131" from the list of available devices.
6. **Confirm Pairing:** A pairing request will appear on your smartphone. Confirm the pairing.
7. **Grant Permissions:** Allow the smartwatch to display notifications by granting necessary permissions in your phone's settings when prompted by the app.
8. **Bluetooth Calls:** After successful connection, you can use the watch to answer or make calls.

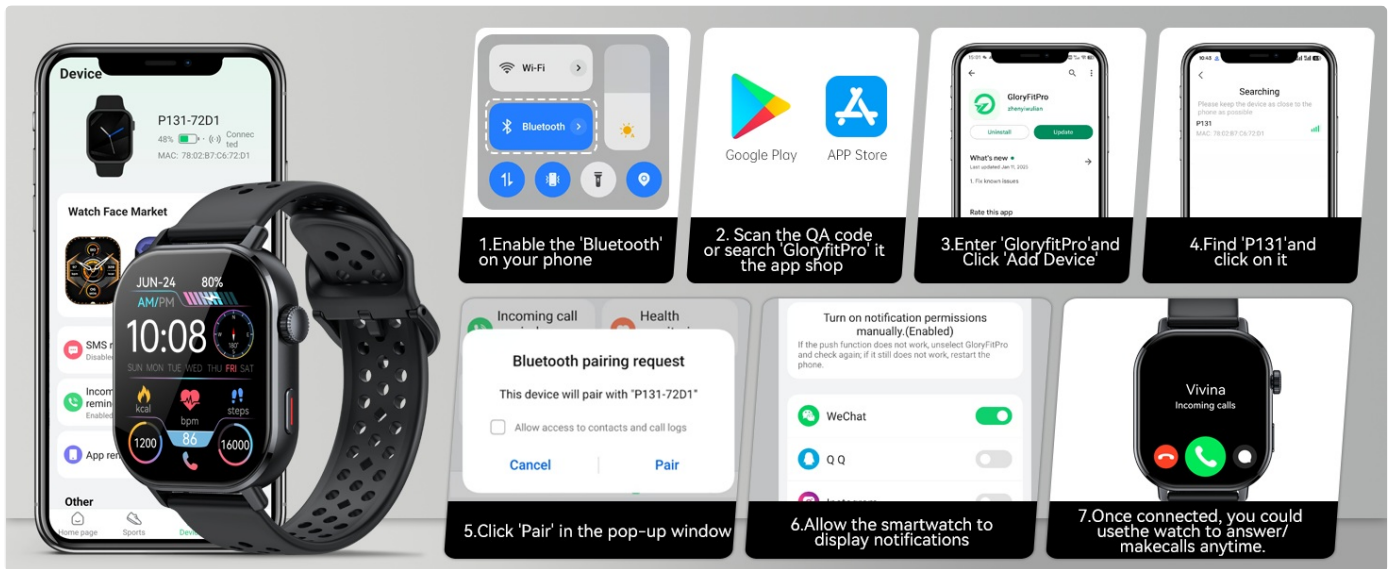


Image: Visual guide for connecting the smartwatch to your phone, showing Bluetooth activation, app download, device selection, pairing confirmation, and notification permissions.

## OPERATING INSTRUCTIONS

### Basic Navigation

- **Touchscreen:** Swipe left, right, up, or down to navigate through menus and features. Tap to select.
- **Side Button:** Press the side button to return to the home screen or to wake the device.

### Customizing the Display

- **Watch Faces:** The P131 offers over 200 customizable watch faces. Long-press the home screen to change the watch face or use the companion app for more options.
- **Always-On Display:** Enable the Always-On Display feature in the watch settings to quickly check time and date without activating the full screen.

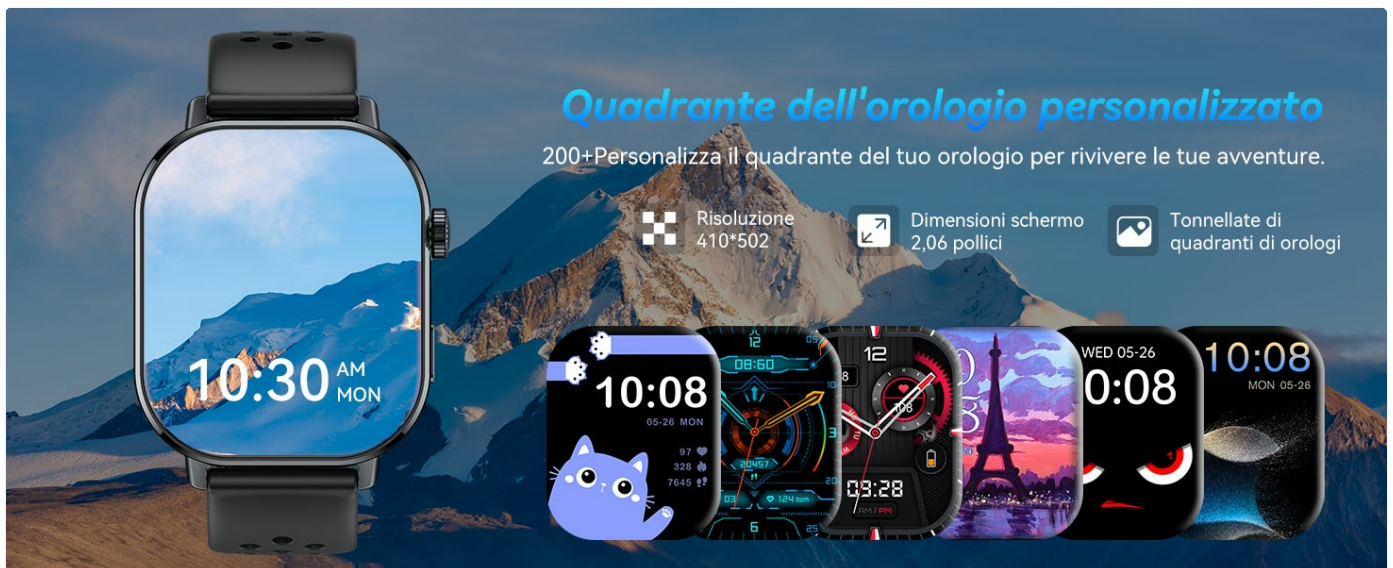


Image: Examples of customizable watch faces on the P131 smartwatch, showcasing the high-resolution 2.06-inch display.

## Sempre Attivo Display

La funzione Always On Display del P131 ti consente di personalizzare l'orologio in modo da poter controllare l'ora senza toccare lo schermo.



Tasto funzione: i pulsanti operativi supportano la personalizzazione



Image: The Always-On Display feature of the P131, demonstrating how to access and customize it in the settings.

## Calls and Notifications

- **Bluetooth Calls:** Once paired, you can make and receive calls directly from your smartwatch. The watch features a microphone and speaker.
- **Message Notifications:** Receive real-time notifications for calls, emails, and text messages from various apps (e.g., WhatsApp, Facebook, Instagram) directly on your wrist.

# AVVISO DI CHIAMATA E MESSAGGIO BLUETOOTH

Effettua/ricevi chiamate in qualsiasi momento e leggi i messaggi



Contatto / Chiamata  
Cronologia chiamate



Microfono



Registri delle  
chiamate



Altoparlante



Tastiera  
numerica



SMS

SMS

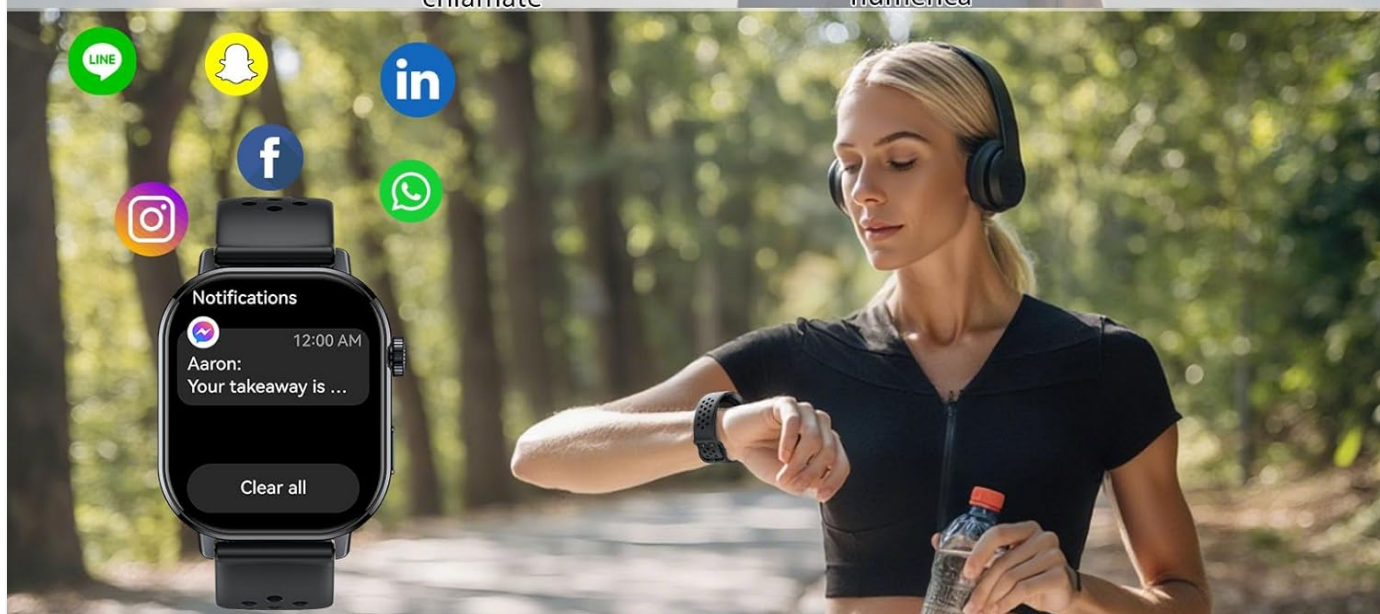


Image: The smartwatch showing an incoming call and notifications from social media apps, illustrating its communication capabilities.

## Sports Modes and GPS Tracking

The P131 offers over 110 sports modes to track your physical activities.

- **Activity Tracking:** Monitor steps, distance, calories burned, and active minutes throughout the day.
- **GPS Tracking:** Utilize the advanced GPS system for precise tracking of outdoor activities like running, cycling, and hiking. View your trajectory, distance, and speed in real-time.
- **Outdoor Adventures:** Features like compass, altimeter, and barometric pressure monitoring are available for outdoor enthusiasts.

# Posizionamento **GPS** ad alta precisione integrato Ogni fase dell'esplorazione è tracciabile



Image: The smartwatch and a smartphone app showing precise GPS tracking of a route, distance, duration, calories, and average pace.

# 110+ Modalità sportive integrate



Passi



Distanza



Calorie



Football



Swimming



Dancing



Elliptical



Yoga



Walk



Badminton



Rings



Boating



Skateboard



Skiing



Weightlifting



Hurdling



Basketball



Climb stairs



Run



Treadmill



Pingpong



Mountaineering



Cycling

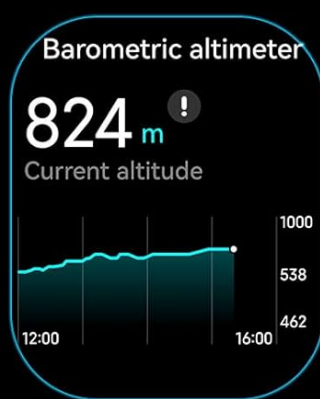
Image: A visual representation of the 110+ integrated sports modes, including tracking for steps, distance, and calories.

# Adatto per avventure all'aria aperta

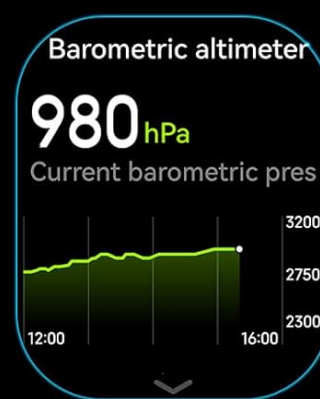
Dinamica dell'altitudine e della pressione barometrica in tempo reale, utilizza la bussola per sapere dove ti trovi ora



Bussola



Altitudine



Pressione dell'aria

Image: The smartwatch showing outdoor adventure features: compass, current altitude (barometric altimeter), and barometric pressure.

## HEALTH MONITORING

The Jugeman P131 provides continuous 24/7 health monitoring.

- **Heart Rate Monitoring:** Advanced sensors continuously monitor your heart rate, providing real-time data and alerts for abnormal readings.
- **Blood Oxygen (SpO2) Monitoring:** Track your blood oxygen levels to understand your body's oxygen saturation.
- **Sleep Tracking:** Monitor your sleep patterns, including deep sleep, light sleep, and awake times, to help improve sleep quality.
- **Stress Level Monitoring:** Assess your stress levels throughout the day.
- **Breathing Exercises:** Guided breathing exercises are available to help manage stress and improve relaxation.
- **Women's Health:** Track menstrual cycles and predict fertile windows.

# Monitoraggio del sonno e sveglia silenziosa



# Monitoraggio della salute

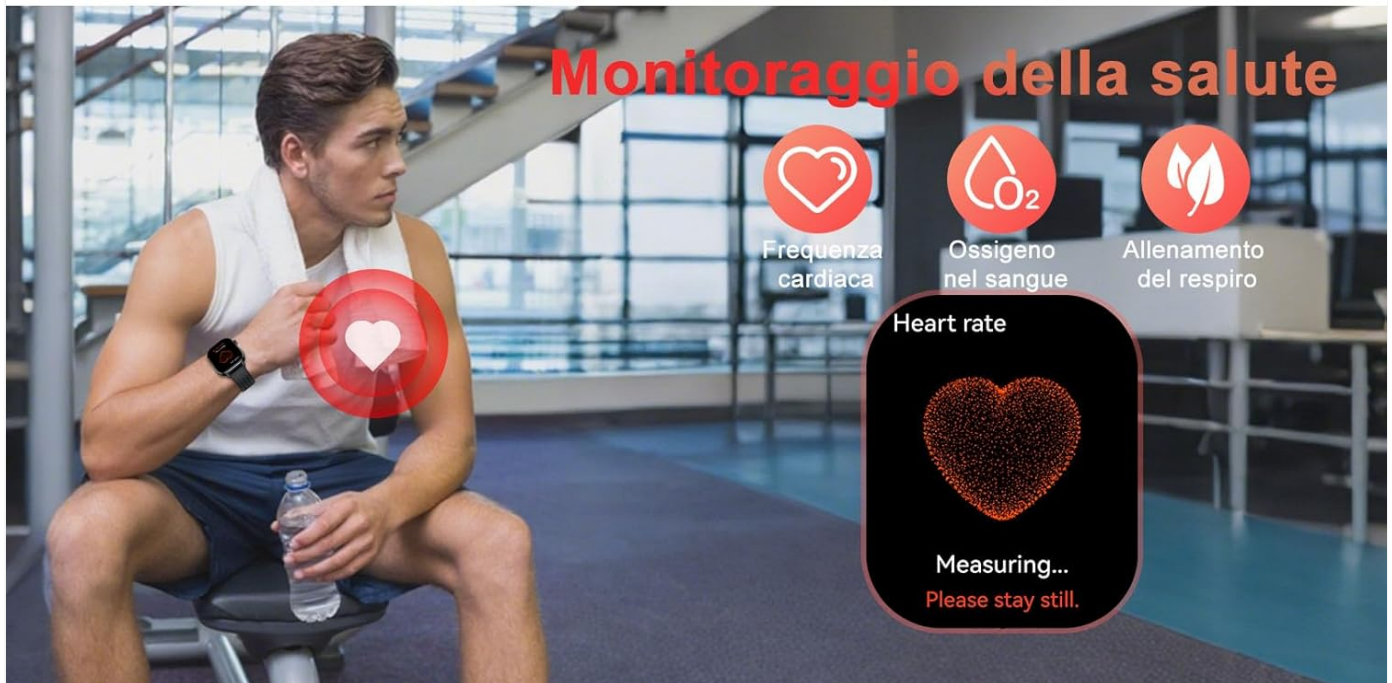


Image: The smartwatch showing sleep stages (deep, light, awake) and a user monitoring their heart rate, indicating continuous health tracking.

# Cardiofrequenzimetro

Monitora costantemente la tua frequenza cardiaca 24 ore su 24 e ti mostra i dati. Ti ricorda quando la frequenza cardiaca è bassa/alta.

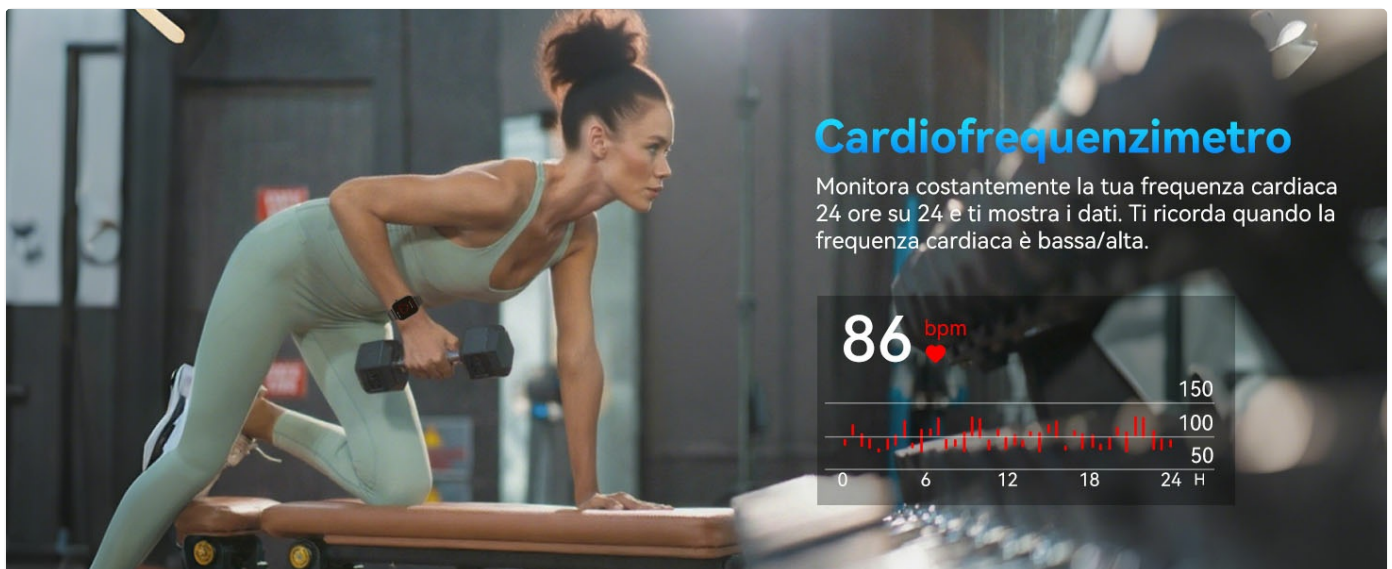


Image: The smartwatch displaying real-time heart rate monitoring, including current beats per minute (bpm) and a historical graph.

## Qualità del sonno Monitoraggio

Monitora il tuo sonno e fornisce dati dettagliati per migliorare la qualità del sonno. 2. Rileva i pisolini.

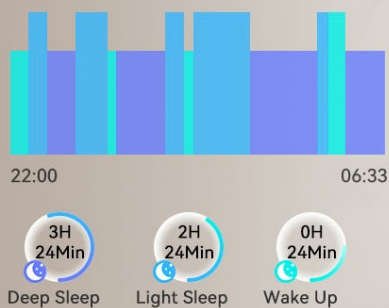
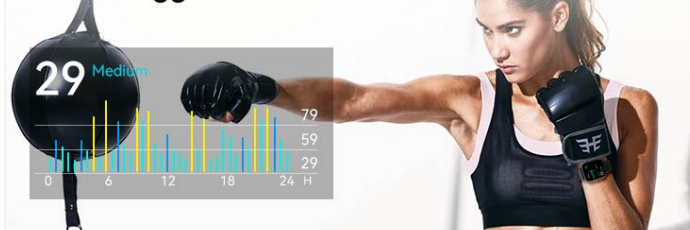


Image: Detailed sleep monitoring data from the smartwatch, showing duration of deep sleep, light sleep, and awake periods.

## Monitoraggio del livello di stress



## Monitoraggio dell'ossigeno nel sangue



## Test emozionali



## Esercizio di respirazione



Image: The smartwatch's advanced health features: stress level monitoring, blood oxygen (SpO2) monitoring, emotional tests, and breathing exercises.

## Ciclo Mestruale



Image: The smartwatch showing women's health tracking (menstrual cycle) and current weather forecast.

## ADDITIONAL FEATURES

- **Voice Assistant:** Access your smartphone's voice assistant directly from the watch.
- **Music Control:** Control music playback on your connected smartphone.
- **Camera Control:** Use the watch as a remote shutter for your smartphone camera.
- **Find Phone:** Locate your misplaced smartphone by triggering an alarm from your watch.
- **Alarms & Timers:** Set alarms, use a stopwatch, or set timers.
- **Weather Forecast:** Get real-time weather updates.
- **Sedentary Reminder:** Receive alerts to move if you've been inactive for too long.
- **SOS Button:** For emergency situations, the watch may feature an SOS function (refer to app settings for configuration).

# Monitoraggio del sonno e sveglia silenziosa

Più di un display, funzionalità all-in-one



 Message Reminder	 Call Reminder	 Heart Rate Monitoring
 Camera Control	 Music Control	 Stopwatch & Timer
 Sleep Tracker	 Exercise Records	 Breathing Training
 Sedentary Notification	 Find Phone	 Voice Assistant

Image: An overview of the P131's multi-functional capabilities, including activity tracking, alarms, flashlight, camera control, music control, stopwatch, find phone, sleep tracking, workout records, women's health, and weather forecast.

## MAINTENANCE

### Water Resistance (5ATM)

The Jugeman P131 Smartwatch has a 5ATM water resistance rating, meaning it can withstand pressures equivalent to a depth of 50 meters.

- It is suitable for showering, swimming in shallow water, and exposure to rain.
- Avoid using the watch in hot water, saunas, or steam rooms, as steam can penetrate the seals.
- Do not press buttons underwater.
- After exposure to saltwater, rinse the watch with fresh water and dry it thoroughly.

## 5ATM Impermeabile

Impermeabilizzazione intelligente, mantiene un audio cristallino, senza timore degli schizzi.



Image: The smartwatch being splashed with water, demonstrating its 5ATM waterproof rating for activities like rain, swimming, and hand washing.

## Cleaning and Care

- Regularly clean the watch and strap with a soft, damp cloth.
- Avoid using harsh chemicals or abrasive materials.
- Ensure the charging contacts are clean and dry before charging.

## TROUBLESHOOTING

---

- **Watch not turning on:** Ensure the watch is fully charged. Connect it to the charger for at least 30 minutes.
- **Cannot pair with phone:**
  - Ensure Bluetooth is enabled on your phone.
  - Make sure the watch is within range of your phone.
  - Restart both the watch and your phone.
  - Try unpairing and re-pairing the device through the app.
  - Check if the "GloryfitPro" app has all necessary permissions.
- **Notifications not appearing:**
  - Verify that notification permissions are granted for the "GloryfitPro" app in your phone's settings.
  - Ensure the app is running in the background.
  - Check notification settings within the "GloryfitPro" app for specific applications.
- **Inaccurate heart rate/SpO2 readings:**
  - Ensure the watch is worn snugly on your wrist, not too tight or too loose.
  - Clean the sensor on the back of the watch.
  - Remain still during measurements.

- **GPS not tracking:**

- Ensure you are in an open outdoor area with a clear view of the sky.
- Verify that GPS is enabled on the watch (if applicable) and in the companion app.

## SPECIFICATIONS

Feature	Detail
Model	P131
Display Size	2.06 inches
Display Type	AMOLED, Digital
Water Resistance	5ATM
GPS	Integrated GPS
Connectivity	Bluetooth
Battery Capacity	350 mAh (Lithium Polymer)
Typical Battery Life	Up to 7 days
Standby Battery Life	Up to 30 days
Charging Time	Approx. 2.5 hours
Compatible Devices	Smartphones, Tablets, Laptops (iOS & Android compatible)
Operating System	Wear OS 2.0
Digital Memory Capacity	1 GB
Additional Features	Always On Display, Weather Forecast, Sedentary Reminder, SOS Button, Microphone, Touchscreen
Weight	160 grams

## Dimensioni dell'orologio

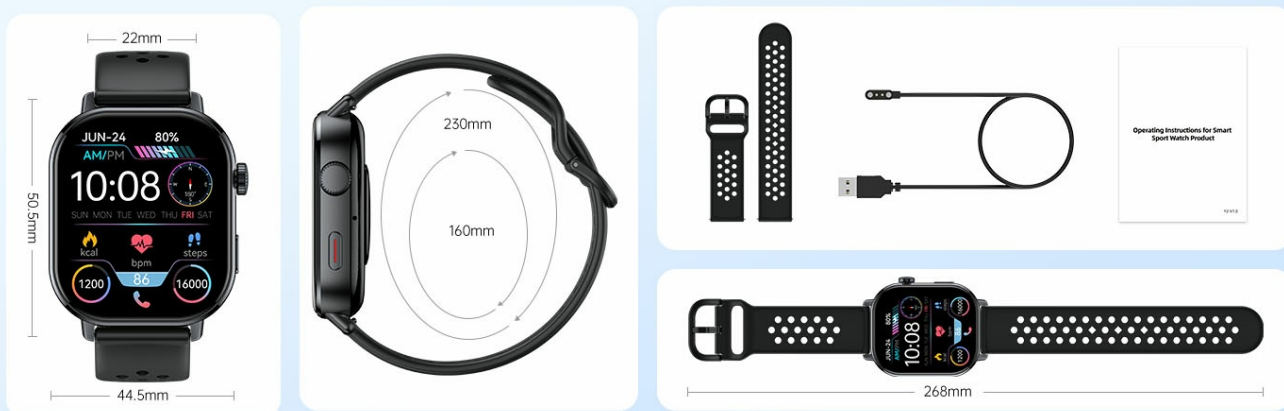


Image: Detailed dimensions of the smartwatch (50.5mm x 44.5mm), strap length (230mm, adjustable to 160mm), and included accessories.

## WARRANTY AND SUPPORT

For warranty information and customer support, please refer to the documentation included with your purchase or contact Jugeman customer service through their official website or the retailer where you purchased the product.

The product includes a user manual. For further assistance, please consult the "GloryfitPro" app's help section.

