

## LUNINO K3

# LUNINO K3 Air Purifier User Manual

Model: K3

## 1. INTRODUCTION

---

Thank you for choosing the LUNINO K3 Air Purifier. This manual provides essential information for the safe and efficient operation, maintenance, and troubleshooting of your new air purifier. Please read this manual thoroughly before use and retain it for future reference.

The LUNINO K3 Air Purifier is designed to improve indoor air quality by effectively removing various airborne pollutants. Its advanced filtration system, smart features, and user-friendly design ensure a cleaner and healthier environment for your home or office.



*Image 1.1: The LUNINO K3 Air Purifier unit.*

## 2. PRODUCT OVERVIEW

---

### 2.1 Key Features

- **H13 HEPA Filtration System:** Captures 99.97% of airborne particles as small as 0.3 microns, including dust,

pollen, pet dander, and smoke.

- **Large Coverage Area:** Effectively purifies spaces up to 3000 sq ft.
- **Real-Time Air Quality Display:** Integrated smart sensor monitors and displays PM2.5 levels.
- **Auto Mode:** Automatically adjusts fan speed based on detected air quality.
- **Pet-Friendly Mode:** Enhanced suction and wide air intakes to capture pet hair and neutralize odors.
- **Sleep Mode:** Operates quietly with dimmed indicator lights for undisturbed rest.
- **Aromatherapy Diffuser:** External compartment for adding essential oils.
- **Child Lock:** Prevents accidental changes to settings.
- **Multiple Fan Speeds:** Four adjustable fan speeds (Low, Med, High, Turbo).
- **Timer Function:** Set operation for 2, 4, or 8 hours.
- **Washable Pre-Filter:** Reusable pre-filter for extended lifespan and reduced replacement frequency.
- **Smart Filter Replacement Reminder:** Alerts when filter replacement is due.



**Designed for Large Spaces**  
99.97% Air Pollutant Removal – Efficiently captures ultrafine particles

**3000** sq ft  
Coverage Area

**500** m<sup>3</sup>/h  
CADR:

Image 2.1: The LUNINO K3 Air Purifier is designed for large spaces, covering up to 3000 sq ft.

## 2.2 Filtration System

The LUNINO K3 utilizes a 3-stage filtration system to ensure comprehensive air purification:

1. **Washable Pre-filter:** Captures large particles such as pet hair, lint, and dust. This filter can be cleaned and reused.
2. **H13 HEPA Filter:** Traps fine particles like pollen, dust mites, and PM2.5.
3. **Activated Carbon Filter:** Absorbs odors from smoke, pets, cooking, and harmful gases like formaldehyde.



Image 2.2: Illustration of the multi-layer filter screens intercepting pollutants.

## 2.3 Package Contents

- LUNINO K3 Air Purifier Unit
- H13 HEPA Filter (pre-installed)
- User Manual
- Power Cord

## 3. SETUP

### 3.1 Unpacking

1. Carefully remove the air purifier from its packaging.
2. Remove all plastic bags and protective materials from the unit and its components.

### 3.2 Filter Installation

The filter is typically pre-installed but may have a protective plastic bag that needs to be removed before first use.

1. Ensure the air purifier is unplugged from the power outlet.
2. Locate the filter cover, usually on the back or side of the unit. Open it according to the markings or instructions on the unit.
3. Remove the filter assembly. If it's new, remove any plastic packaging from the filter.
4. Insert the filter back into the unit, ensuring it is seated correctly.
5. Close the filter cover securely.



### 3.3 Placement

For optimal performance, place the air purifier on a firm, level surface at least 1 foot (30 cm) away from walls or furniture. Ensure there are no obstructions to the air intake and outlet vents.

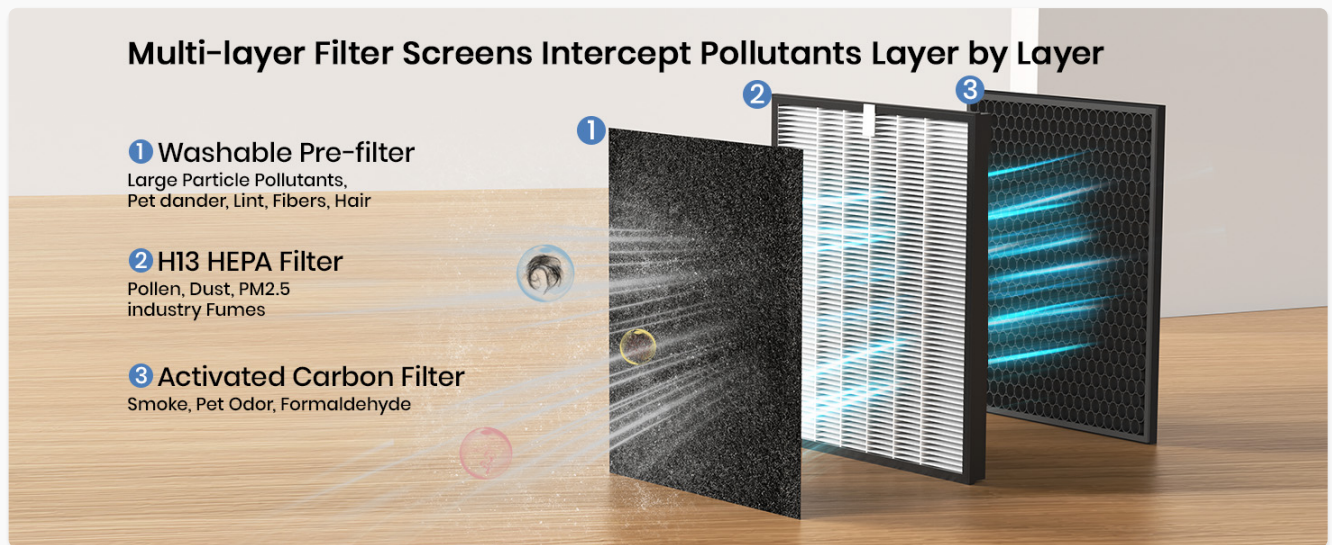


Image 3.1: Examples of optimal placement in different rooms like bedrooms, living rooms, offices, and kitchens.

## 4. OPERATING INSTRUCTIONS

### 4.1 Control Panel Overview

The control panel is located on the top of the unit and features various buttons and indicators for easy operation.

- **Power Button:** Turns the unit on or off.
- **Fan Speed Button:** Cycles through fan speeds (Low, Med, High, Turbo).
- **Mode Button:** Selects operating modes (Auto, Pet, Sleep).
- **Timer Button:** Sets the auto-off timer (2H, 4H, 8H).
- **Child Lock Button:** Activates or deactivates the child lock.
- **Aromatherapy Button:** Controls the aromatherapy function.
- **PM2.5 Display:** Shows real-time air quality readings.
- **Air Quality Indicator Light:** Changes color based on air quality (Green: Good, Yellow: Normal, Red: Bad).

### 4.2 Power On/Off

1. Plug the power cord into a suitable electrical outlet.
2. Press the **Power Button** to turn the unit on. The unit will start in a default mode, usually Auto Mode or a low fan speed.
3. Press the **Power Button** again to turn the unit off.

### 4.3 Fan Speed Adjustment

Press the **Fan Speed Button** repeatedly to cycle through the available fan speeds: Low, Medium, High, and Turbo.

### 4.4 Mode Selection

Press the **Mode Button** to switch between different operating modes:

- **Auto Mode:** The air purifier's built-in smart sensor detects the current air quality (PM2.5 levels) and automatically adjusts the fan speed to maintain optimal purification. The air quality indicator light will change color accordingly.



Image 4.1: Auto Mode intelligently adjusts fan speed based on real-time PM2.5 readings.





*Image 4.2: Real-time Air Quality Detection: Indicator Color, Air Quality, AQI, and Fan Speed.*

- **Pet Mode:** This mode is optimized for homes with pets. It combines powerful suction with wide air intakes to efficiently capture pet hair and neutralize pet odors.



*Image 4.3: Pet-Friendly Mode for effective pet hair and odor removal.*

- **Sleep Mode:** Activates ultra-quiet operation (as low as 15dB) and dims all indicator lights to create an optimal sleeping environment.

# Engineered for Perfect Nights

3-in-1 Air Purifier – Upgrade your sleep experience



Image 4.4: Sleep Mode provides quiet operation and dimmed lights for a peaceful night.

## 4.5 Timer Function

Press the **Timer Button** repeatedly to set the desired operating duration: 2 hours, 4 hours, or 8 hours. The unit will automatically turn off after the set time. To cancel the timer, cycle through the options until no timer duration is selected.

## 4.6 Child Lock

To activate the Child Lock, press and hold the **Child Lock Button** for a few seconds until the indicator light illuminates. This will disable all other buttons on the control panel. To deactivate, press and hold the **Child Lock Button** again until the indicator light turns off.

## 4.7 Aromatherapy Function

The LUNINO K3 features an external compartment for aromatherapy. To use:

1. Locate the aromatherapy compartment, typically a small tray or pad on the side or top of the unit.



2. Add a few drops of your preferred essential oil onto the aromatherapy pad (not included).
3. Place the pad back into the compartment and close it securely.
4. Press the **Aromatherapy Button** to activate the function. The air purifier will then diffuse the fragrance along with the purified air.

## 5. MAINTENANCE

---

Regular maintenance ensures optimal performance and extends the lifespan of your air purifier.

### 5.1 Washable Pre-Filter Cleaning

The pre-filter can be cleaned to maintain efficiency. It is recommended to clean it every 2-4 weeks, depending on air quality and usage.

1. Unplug the air purifier from the power outlet.
2. Open the filter cover and remove the pre-filter.
3. **Method 1 (Dry Cleaning):** Use a soft brush or a vacuum cleaner with a brush attachment to remove dust and pet hair from the pre-filter surface.
4. **Method 2 (Wet Cleaning):** Rinse the pre-filter under running water. Ensure all debris is removed. Allow the filter to air dry completely before re-installing. Do not expose to direct sunlight.
5. Once clean and dry, re-install the pre-filter and close the filter cover.

# Easy-to-maintain Washable Filter

Maximize Your Investment – Enjoy extended filter life and consistent air quality

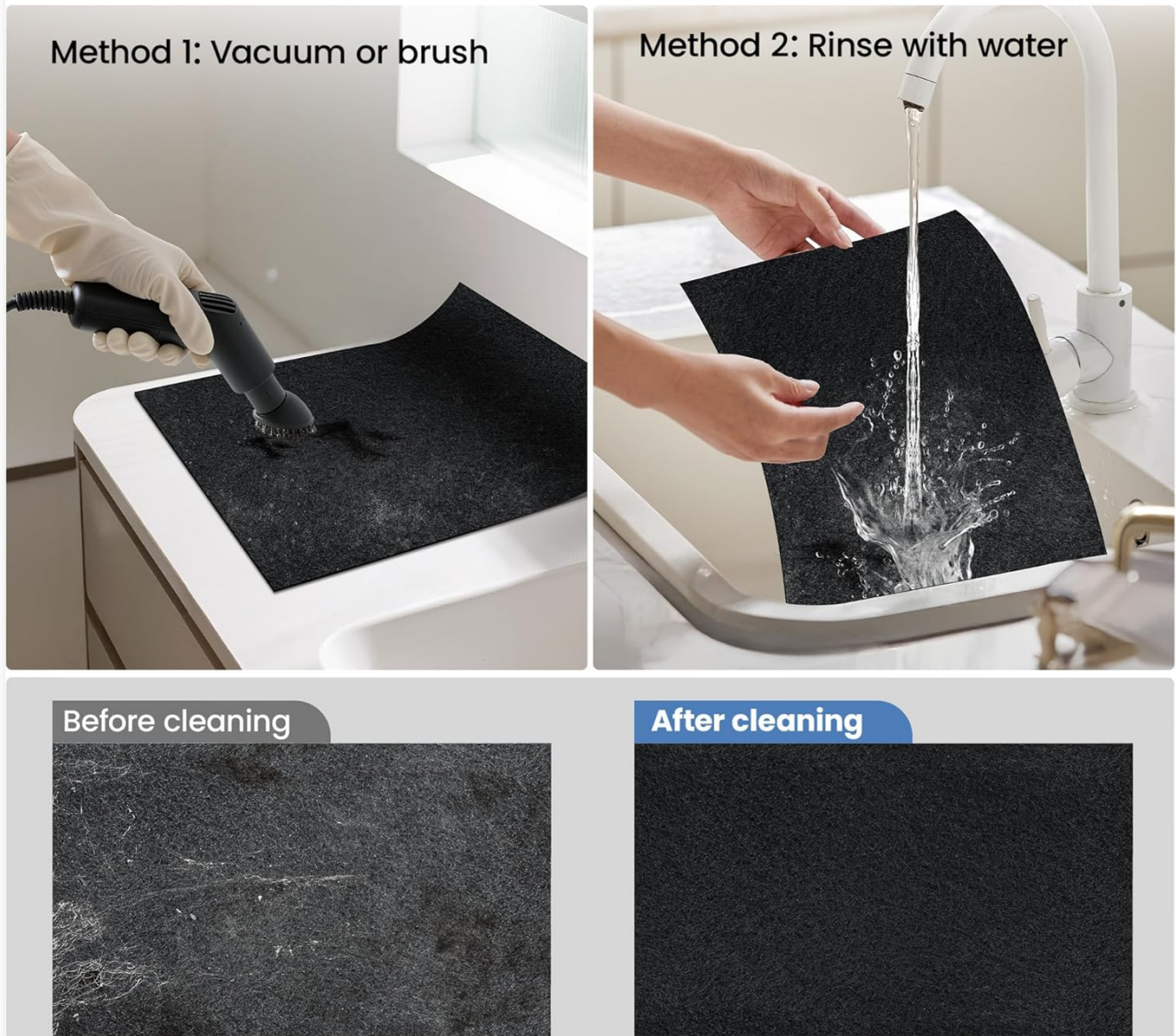


Image 5.1: Two methods for cleaning the washable pre-filter: vacuuming or rinsing with water.

## 5.2 H13 HEPA & Activated Carbon Filter Replacement

The H13 HEPA and Activated Carbon filter is not washable and needs to be replaced periodically. The unit features a smart filter replacement reminder that will illuminate when a replacement is due, typically every 6-8 months depending on usage.

1. Unplug the air purifier from the power outlet.
2. Open the filter cover and remove the old filter assembly.
3. Dispose of the old filter responsibly.
4. Unpack the new filter and insert it into the unit, ensuring correct orientation.
5. Close the filter cover securely.
6. After replacing the filter, press and hold the **Filter Reset Button** (refer to your unit's control panel for exact location, often combined with another button) for 3-5 seconds to reset the filter lifetime counter. The filter reminder light will turn off.



Image 5.2: The air purifier features an automatic reminder for filter replacement.

### 5.3 Exterior Cleaning

Wipe the exterior surface of the air purifier with a soft, dry cloth. Do not use abrasive cleaners, waxes, or solvents, as these may damage the finish.

## 6. TROUBLESHOOTING

If you encounter any issues with your LUNINO K3 Air Purifier, please refer to the following table for common problems and solutions.

Problem	Possible Cause	Solution
Unit does not turn on	Power cord not securely plugged in No power from outlet Child Lock is active	Ensure power cord is firmly connected Test outlet with another device Deactivate Child Lock (refer to section 4.6)
Poor air purification performance	Filters are dirty or clogged Protective plastic not removed from filter Unit size not suitable for room Air inlets/outlets blocked	Clean or replace filters (refer to section 5) Ensure all plastic packaging is removed from filters Verify room size is within 3000 sq ft coverage Ensure unit is placed away from obstructions
Unusual noise	Filter not installed correctly Foreign object inside unit Unit on uneven surface	Re-install filter securely Unplug and check for obstructions (contact support if unable to remove) Place unit on a flat, stable surface
Filter replacement indicator remains on after replacement	Filter reset not performed	Perform filter reset (refer to section 5.2)



Problem	Possible Cause	Solution
Aromatherapy not working	No essential oil added Aromatherapy pad is dry	Add essential oil to the pad Ensure pad is sufficiently saturated

## 7. SPECIFICATIONS

Feature	Detail
Model Number	K3
Product Dimensions	6.7"D x 12.2"W x 16.2"H
Weight	9.66 Pounds
Floor Area Coverage	Up to 3000 Square Feet
Filtration Type	3-Stage (Washable Pre-filter, H13 HEPA, Activated Carbon)
Power Consumption	36 Watts
Noise Level	As low as 15dB (Sleep Mode)
Certifications	ETL, FCC, EPA, CARB Certified

## 8. WARRANTY AND SUPPORT

### 8.1 Warranty Information

The LUNINO K3 Air Purifier comes with a warranty of more than 1 year, covering defects in materials and workmanship under normal use. Additionally, a 2-year free replacement policy is offered for eligible issues. Please retain your proof of purchase for warranty claims.

### 8.2 Return Policy

A 30-day no-reason return policy is available from the date of purchase. Please refer to the retailer's specific return guidelines.

### 8.3 Customer Support

For any questions, technical assistance, or warranty claims, please contact LUNINO customer support. We provide lifetime technical support and aim to resolve any issues within 24 hours.

**Contact Information:**

- Email: [Insert Customer Support Email Here]
- Phone: [Insert Customer Support Phone Number Here]
- Website: [LUNINO Official Store](#)

