

Conair S03L

Infiniti PRO by CONAIR Steam Therapy Hair Steamer (Model S03L) Instruction Manual

Portable Styling Tool with 7-Inch Diffuser Attachment

PRODUCT OVERVIEW

The INFINITI PRO CONAIR Steam Therapy Hair Steamer is designed to hydrate, restore, and condition hair. This portable hair steamer, equipped with a diffuser attachment, utilizes steam to open hair cuticles, facilitating better absorption of conditioners and masks. It promotes healthier-looking, vibrant hair and is suitable for natural, curly, and relaxed hair types. The device features hair-penetrating prongs to gently lift and separate hair, reactivating curl patterns for enhanced texture and increased volume. A 7-inch diffuser attachment ensures even steam distribution, hydrating hair from roots to ends. It offers a user-friendly design with a simple on/off button, a 10-minute runtime, and a 30-second heat-up time. An 80 mL detachable water tank allows for quick refills, and an automatic safety shutoff feature is included for peace of mind. A flush kit is provided for easy cleaning and maintenance.



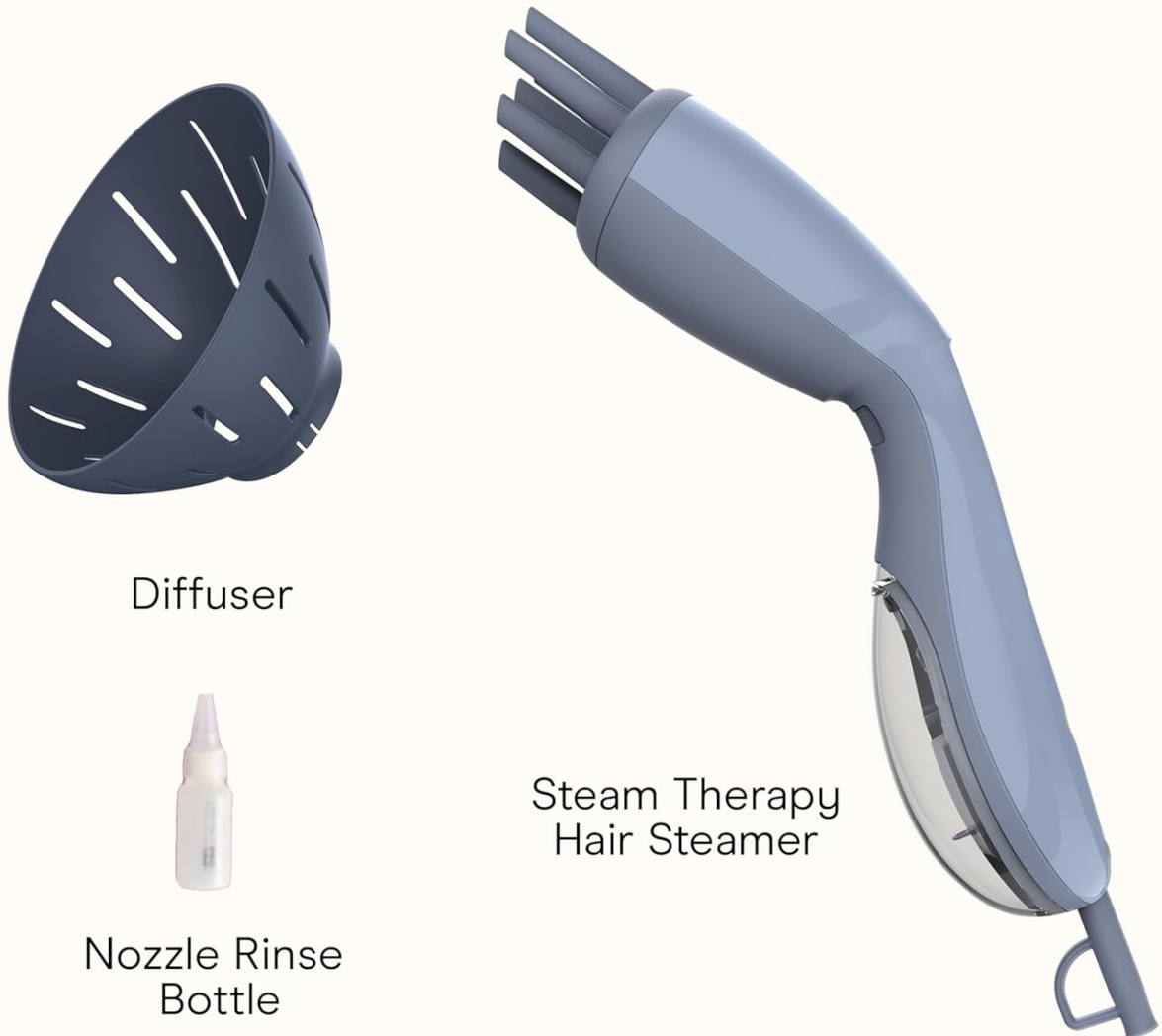
Figure 1: Infiniti PRO by CONAIR Steam Therapy Hair Steamer with its components.

PRODUCT COMPONENTS

The package includes the following items:

- Steam Therapy Hair Steamer Unit
- 7-inch Diffuser Attachment
- Hair-Penetrating Prongs (integrated into the main unit)
- 80 mL Detachable Water Tank
- Nozzle Rinse Bottle (Flush Kit)
- Power Cord

What's in the box



Diffuser

Steam Therapy
Hair Steamer

Nozzle Rinse
Bottle

Figure 2: All components included in the product packaging.

KEY FEATURES

- **Targeted Hydration:** Utilizes steam to open hair cuticles, enhancing the absorption of conditioners and masks for deep conditioning.
- **Curl Revitalization:** Helps detangle, stretch, reshape, and volumize natural, curly, and relaxed hair.
- **Hair-Penetrating Prongs:** Gently lift and separate hair to reactivate curl patterns and add bounce.
- **7-Inch Diffuser Attachment:** Designed to gather longer hair, ensuring even steam distribution and hydration from roots to ends.
- **Quick Heat-Up:** Reaches operating temperature in approximately 30 seconds.
- **Efficient Runtime:** Provides a continuous steam runtime of 10 minutes per water tank fill.
- **Detachable Water Tank:** 80 mL capacity for easy and mess-free refills.
- **Automatic Safety Shutoff:** Enhances user safety by automatically turning off the device after use or if water runs out.

SETUP INSTRUCTIONS

1. **Unpack Components:** Carefully remove all items from the packaging. Ensure all listed components are present.
2. **Fill Water Tank:** Detach the 80 mL water tank from the main unit. Fill the tank with distilled or purified water. Avoid using tap water to prevent mineral buildup. Reattach the water tank securely.
3. **Attach Desired Accessory:**
 - For general steam therapy and curl revitalization, attach the 7-inch diffuser by aligning it with the main unit and twisting until secure.
 - For targeted detangling and reshaping, use the integrated hair-penetrating prongs.
4. **Connect to Power:** Plug the power cord into a standard electrical outlet.

OPERATING INSTRUCTIONS

1. **Power On:** Press the On/Off button to activate the steamer. The device will begin to heat up.
2. **Heat-Up Time:** Allow approximately 30 seconds for the steamer to reach its operating temperature and begin producing steam.
3. **Application with Prongs:**

For detangling, stretching, and reshaping curls, gently guide the hair-penetrating prongs through sections of your hair. The steam will help to soften and separate strands. Move the device slowly to ensure even steam distribution.

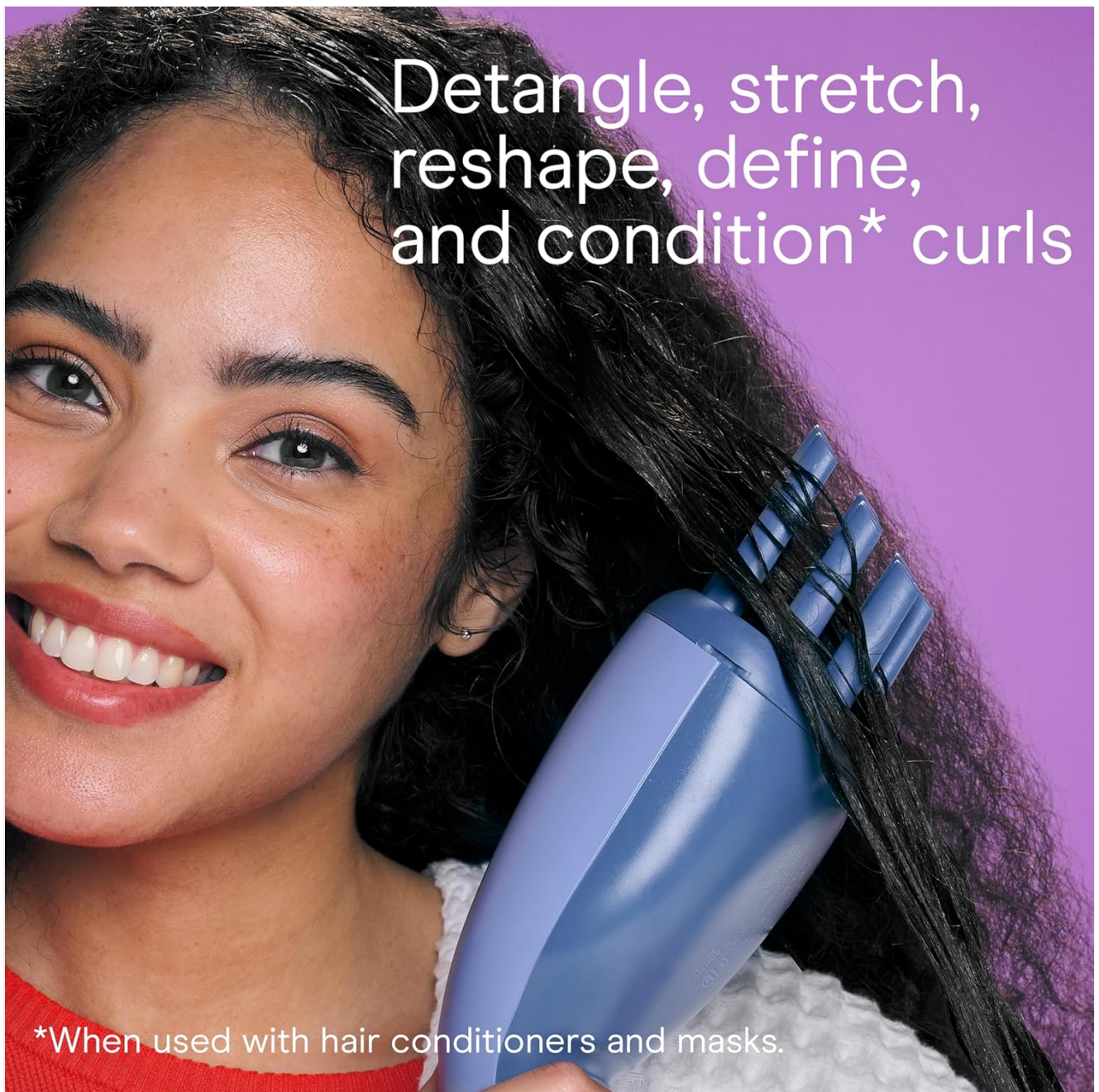


Figure 3: Using the hair-penetrating prongs for targeted steam application.

4. Application with Diffuser:

To hydrate hair from roots to ends and reactivate curl patterns, attach the diffuser. Place sections of your hair into the diffuser bowl and hold in place while steam is applied. The diffuser helps to evenly distribute moisture and add volume.



Figure 4: Using the diffuser attachment for overall hydration and curl definition.

5. **Runtime:** The device provides approximately 10 minutes of continuous steam. If more time is needed, refill the water tank and restart the device.
6. **Power Off:** After use, press the On/Off button to turn off the steamer. The device will automatically shut off after the runtime is complete or if the water tank is empty.

Official Product Video: The Secret to Perfect Curls!

Your browser does not support the video tag.

Video 1: Demonstrates the use of the Infiniti PRO by CONAIR Steam Therapy Hair Steamer for achieving perfect curls.

CARE AND MAINTENANCE

1. **Empty Water Tank:** After each use, ensure the water tank is empty.
2. **Clean with Flush Kit:** Regularly use the included nozzle rinse bottle (flush kit) to clean the internal components and prevent mineral buildup. Follow the instructions provided with the flush kit for best results.

- 3. **Wipe Exterior:** Wipe the exterior of the steamer with a soft, damp cloth. Do not immerse the unit in water.
- 4. **Storage:** Store the steamer in a cool, dry place when not in use.

TROUBLESHOOTING

Problem	Possible Cause	Solution
No steam produced.	Water tank is empty or not properly seated. Device not powered on. Mineral buildup.	Refill water tank and ensure it is securely attached. Press the On/Off button. Use flush kit to clean the device.
Weak steam output.	Low water level. Mineral buildup.	Ensure water tank is adequately filled. Use flush kit to clean the device.
Device automatically shuts off prematurely.	Water tank is empty. Safety feature activated.	Refill water tank. Allow device to cool down before restarting if it overheated.

SAFETY INFORMATION

This device is equipped with an automatic shutoff feature to prevent overheating. Always keep the device away from water and out of reach of children. Do not operate if the power cord or plug is damaged. Refer to the full safety manual for comprehensive guidelines.

SPECIFICATIONS

- **Model Number:** S03L
- **Brand:** Conair
- **Product Dimensions:** 12.5 x 3.2 x 8.1 inches
- **Weight:** 2 Pounds
- **Water Tank Capacity:** 80 mL
- **Heat-Up Time:** 30 seconds
- **Runtime:** 10 minutes (continuous steam)
- **Power Source:** Corded Electric
- **Wattage:** 650 watts
- **Material:** Plastic
- **Color:** Blue
- **UPC:** 074108503985

WARRANTY AND SUPPORT

For warranty information or product support, please refer to the documentation included with your purchase or visit the official Conair website. Keep your purchase receipt for warranty claims.



