

GardePro X60 Pro Max

GardePro X60 Pro Max Cellular Trail Camera User Manual

Model: X60 Pro Max

1. INTRODUCTION

Welcome to the GardePro X60 Pro Max Cellular Trail Camera. This manual provides detailed instructions for setting up, operating, and maintaining your camera to ensure optimal performance for wildlife monitoring and security applications. Please read this manual thoroughly before using your camera.

2. PACKAGE CONTENTS

Verify that all items listed below are included in your package:

- GardePro X60 Pro Max Cellular Trail Camera
- 8000mAh Rechargeable Lithium-ion Battery Pack
- USB Charging Cable
- Mounting Strap
- SIM Card (pre-installed or included separately)
- User Manual (this document)

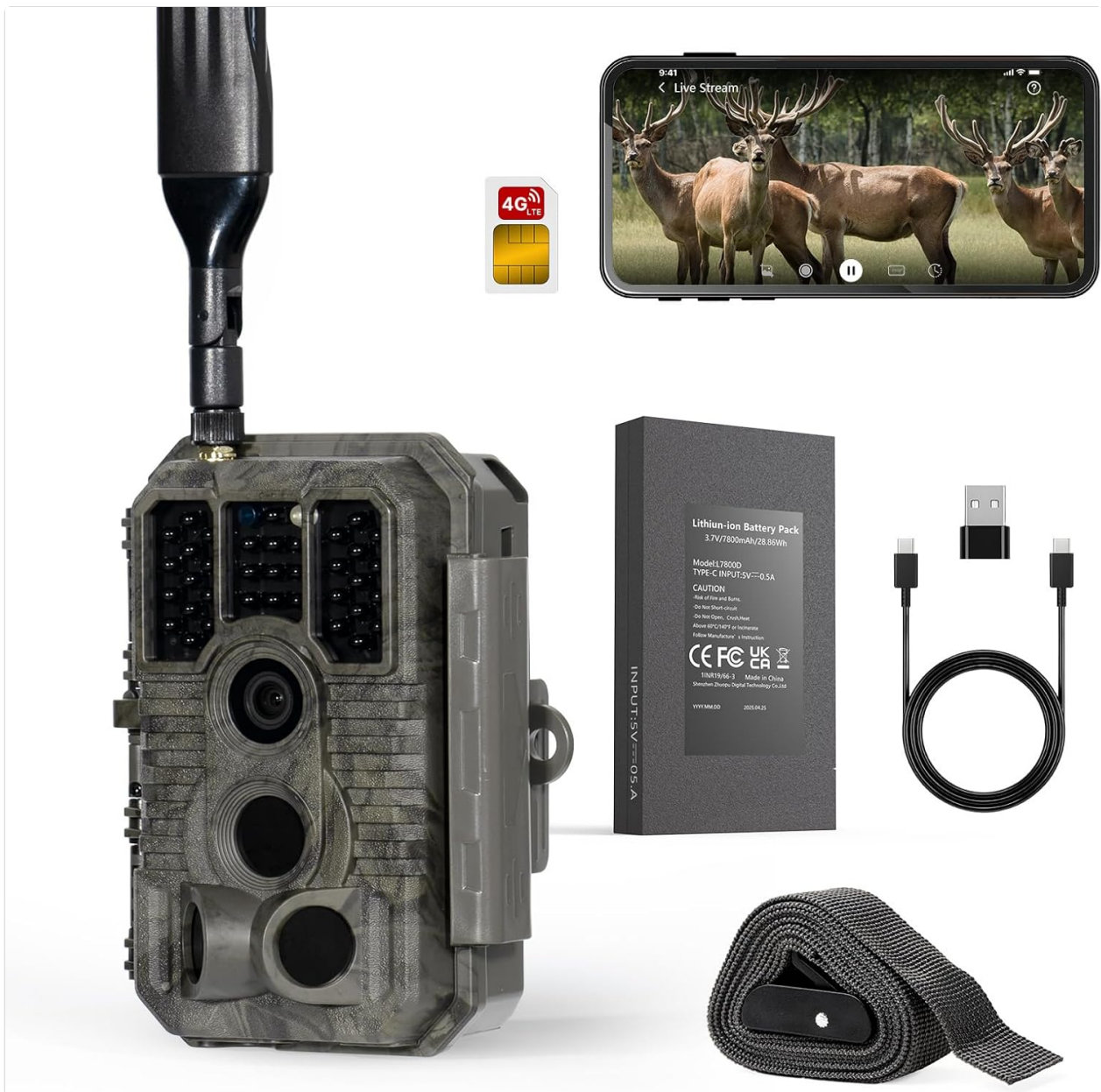


Image: GardePro X60 Pro Max camera, 4G LTE SIM card, rechargeable battery pack, USB cable, and mounting strap.

3. PRODUCT OVERVIEW

Familiarize yourself with the main components of your GardePro X60 Pro Max camera:

- **Antenna:** For cellular signal reception.
- **PIR Motion Sensors:** Detect movement to trigger recordings.
- **Infrared LEDs:** Provide no-glow illumination for night vision.
- **Camera Lens:** Captures images and videos.
- **LCD Screen:** For menu navigation and viewing settings.
- **Control Buttons:** Menu, OK, Navigation (Up/Down/Left/Right), Start, On/Off.
- **Battery Compartment:** Houses the rechargeable battery pack.
- **SIM Card Slot:** For cellular network connectivity.
- **USB Port:** For charging and data transfer.
- **SD Card Slot:** For additional storage (though 32GB is built-in).

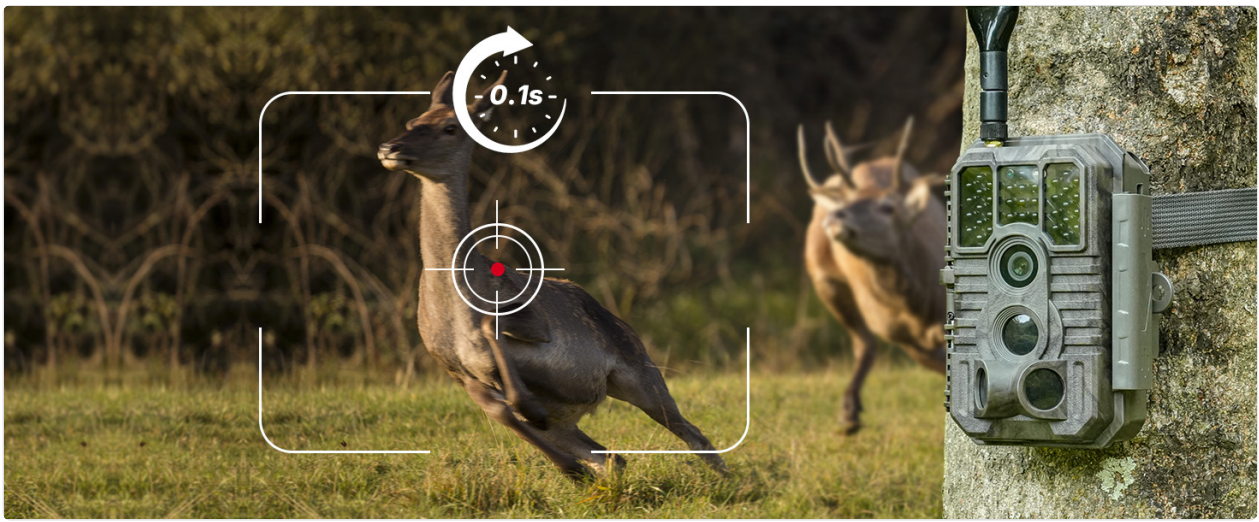


Image: The GardePro X60 Pro Max camera with its front panel open, revealing the 2.4-inch LCD screen and control buttons.

4. SETUP GUIDE

4.1. Battery Installation and Charging

1. Open the camera's main latch and then the battery compartment cover.
2. Insert the provided 8000mAh rechargeable lithium-ion battery pack, ensuring correct polarity.
3. Close the battery compartment cover and the main latch securely.
4. Connect the camera to a power source using the USB charging cable to fully charge the battery before first use. A full charge ensures maximum operational time.

8000mAh Battery-Save More, Last Longer Power That Lasts-No Extra Cost

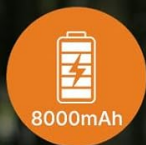


Image: A hand inserting the 8000mAh rechargeable battery pack into the open battery compartment of the GardePro X60 Pro Max camera.

4.2. SIM Card Activation and Installation

The GardePro X60 Pro Max is compatible with Verizon, AT&T, and T-Mobile networks. A SIM card is required for cellular functionality.

1. If your SIM card is not pre-installed, locate the SIM card slot inside the camera.
2. Insert the activated SIM card into the designated slot until it clicks into place.
3. Ensure your cellular data plan is active and sufficient for your usage needs.

4.3. App Download and Camera Pairing

1. Download the official GardePro app from your smartphone's app store (iOS or Android).
2. Create an account or log in.
3. Follow the in-app instructions to add and pair your X60 Pro Max camera. This typically involves scanning a QR code on the camera or entering its serial number.

4.4. Mounting the Camera

For optimal performance, consider the following when mounting:

- **Height:** Mount the camera approximately 3-6 feet (1-2 meters) from the ground.
- **Orientation:** Aim the camera slightly downward to capture subjects effectively.
- **Clearance:** Ensure no branches or tall grass obstruct the camera's view or motion sensors.
- **Security:** Use the provided mounting strap to secure the camera firmly to a tree or post.

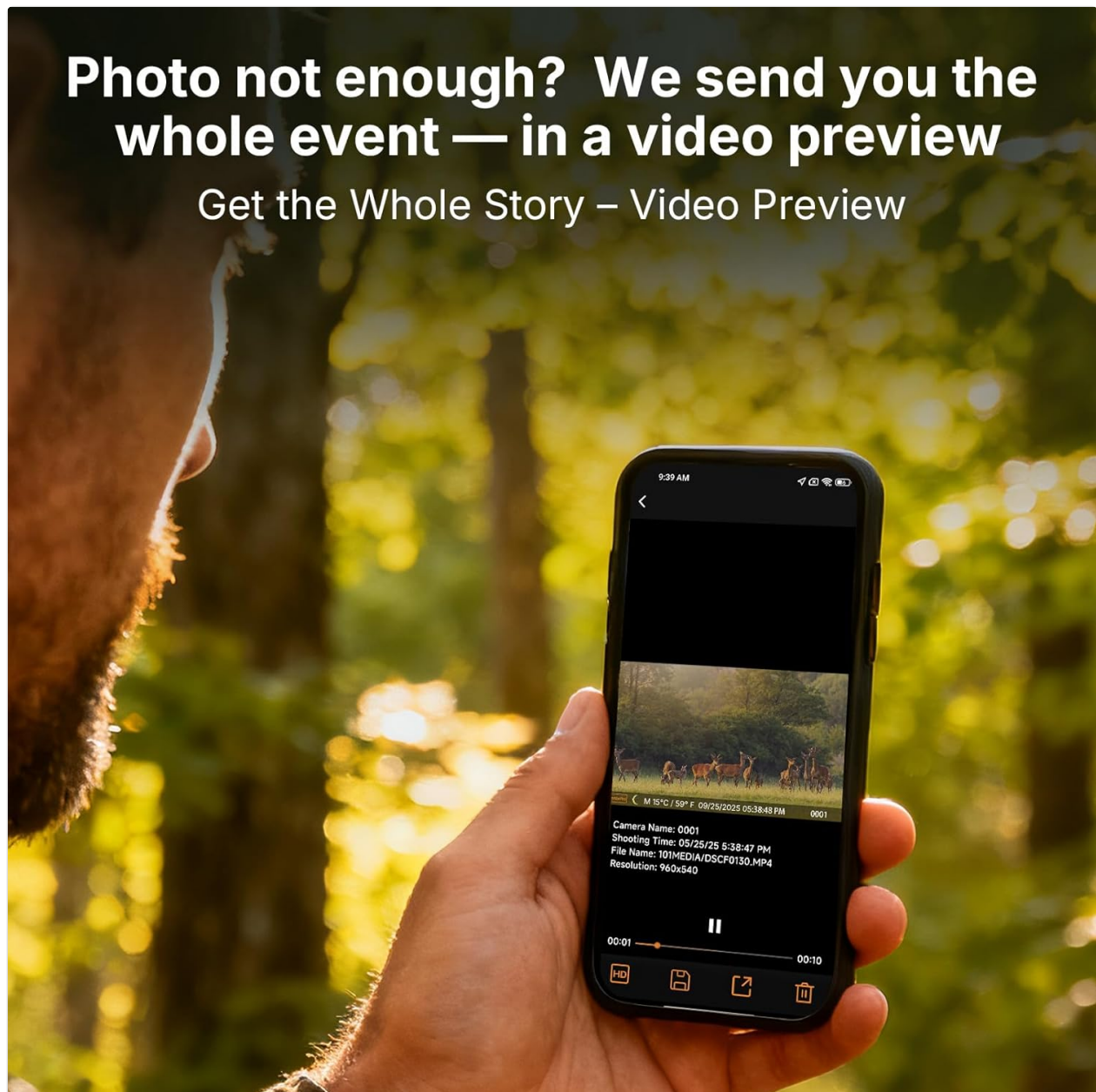


Image: The GardePro X60 Pro Max camera securely mounted to a tree trunk using its strap, illustrating its cellular connectivity.

5. OPERATING INSTRUCTIONS

5.1. Powering On/Off

Locate the power switch inside the camera's main compartment. Switch it to 'ON' to activate the camera. Switch to 'OFF' to power down.

5.2. Basic Settings via Camera Screen

Use the internal LCD screen and control buttons to configure initial settings such as:

- Date and Time
- Operating Mode (Photo, Video, Photo+Video)
- Resolution (48MP photos, 1296P videos)
- Trigger Interval and Sensitivity
- Language

5.3. Using the Mobile App

The GardePro app provides advanced control and monitoring capabilities:

5.3.1. Live View

Access real-time video streaming from your camera directly on your smartphone. This feature requires an active data plan.

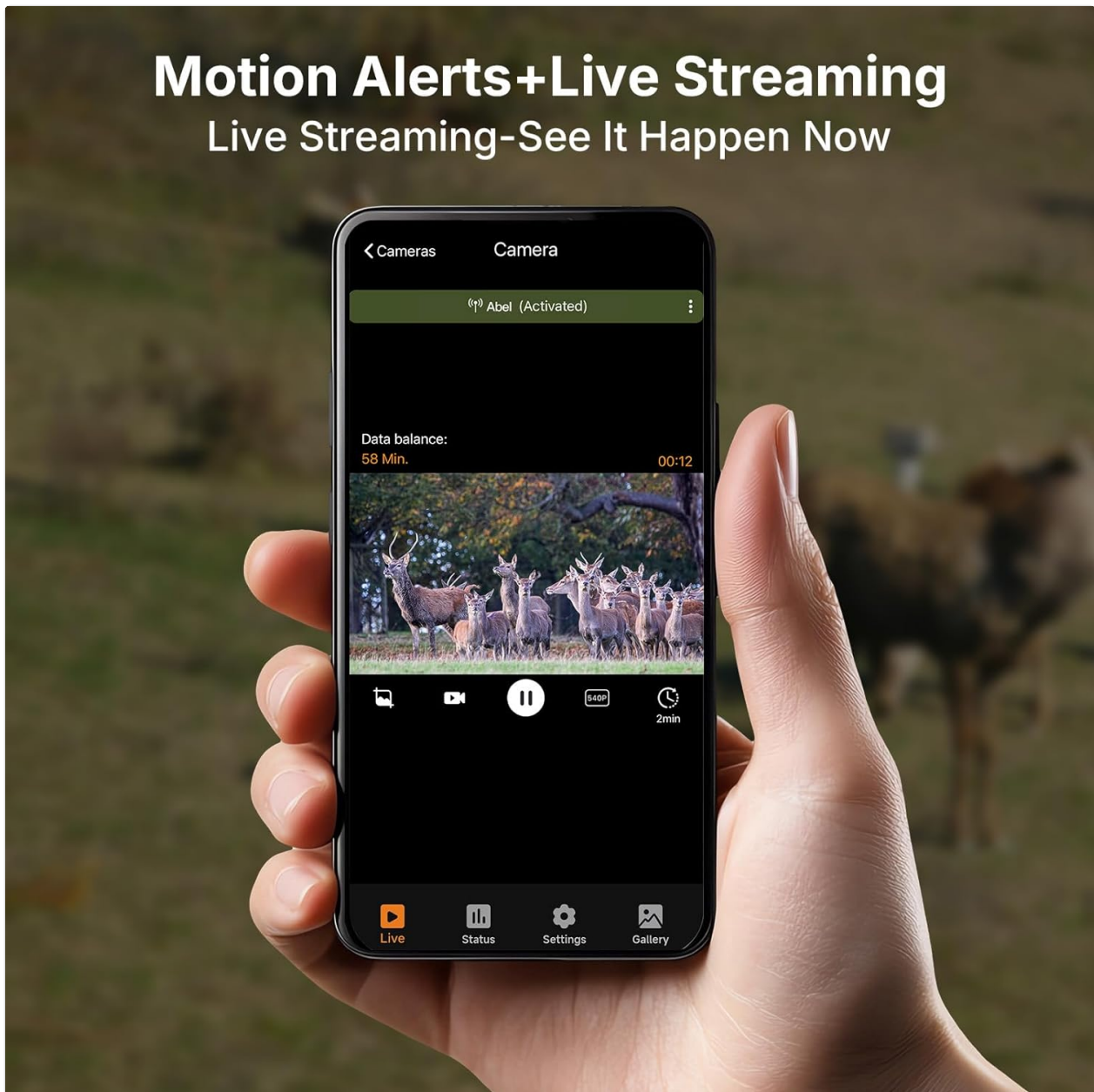


Image: A smartphone screen showing a live video feed from the GardePro X60 Pro Max camera, capturing deer in their natural habitat.

5.3.2. On-Demand Requests

Request instant photos or short video clips from your camera at any time. This feature also requires an active data plan.

Instant Access, On Demand

On Demand-Get photo Instantly



Image: A smartphone displaying the GardePro app interface, with an option to 'Take a Photo' on demand, showing a captured image of deer.

5.3.3. Photo and Video Previews

Receive motion-triggered photo alerts and video previews (3-300 seconds) directly to your app, allowing for quick review of events. The camera sends 960x540 resolution video previews and 540P photo previews.

Don't Settle for Blurry Previews

Auto-Sent to App –
Clearer Photo Previews

540P
PHOTOS

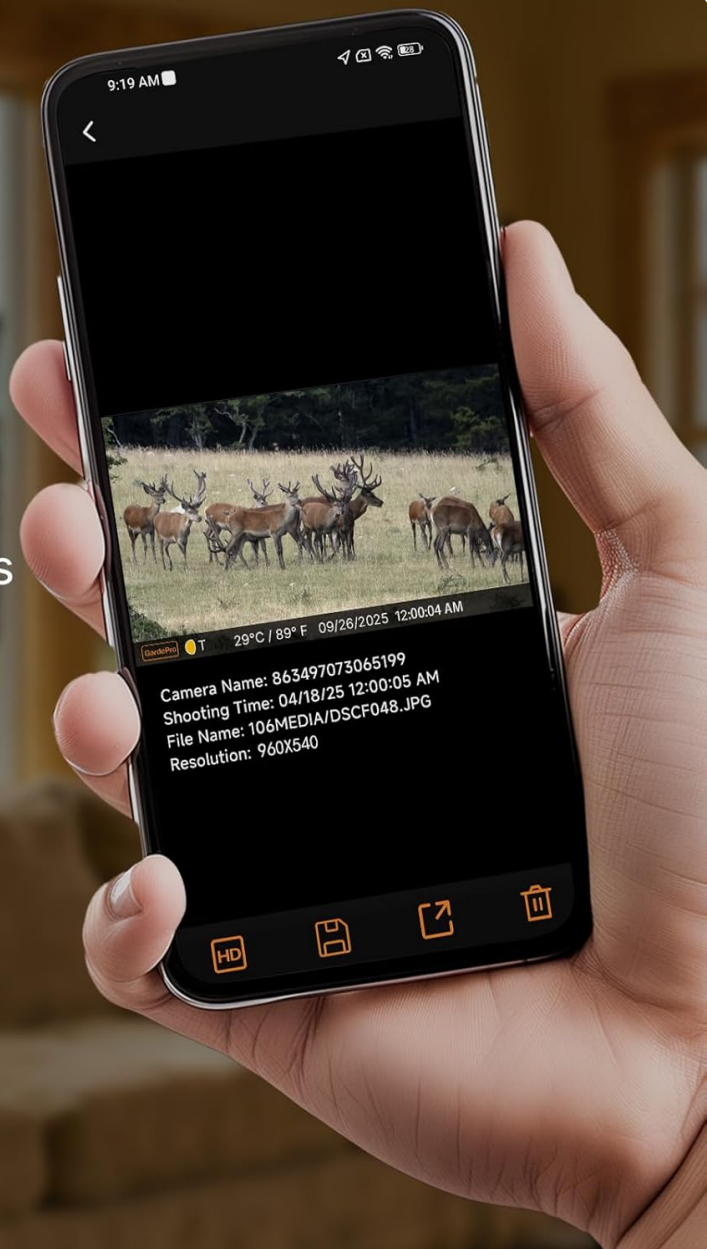


Image: A person viewing a video preview of deer captured by the GardePro X60 Pro Max camera on their smartphone.



Image: A smartphone displaying a clear 540P photo preview of deer, sent from the GardePro X60 Pro Max camera.

5.3.4. Shared Data Plans

The GardePro X60 Pro Max supports shared data plans, allowing multiple cameras to utilize a single data pool. This can optimize data usage and reduce overall costs for users with multiple devices.

Flexible Plans, Shared Savings

Power Up Your Wildlife Monitoring



Image: A smartphone screen displaying the GardePro app's 'Plans' section, showing a shared data plan across multiple cameras with usage details.

5.3.5. Camera Sharing

The app allows you to share access to your camera's feed and captured media with friends or team members without additional fees.

Camera Sharing Made Simple — And Free!

Enjoy the Moment – Free Camera Sharing



Image: An illustration showing multiple individuals viewing the same GardePro camera feed on their smartphones, demonstrating the camera sharing feature.

5.4. Night Vision

The camera features 940nm no-glow infrared LEDs, providing illumination up to 100 feet for clear 48MP photos and 1296P videos in complete darkness. These LEDs are undetectable to animals and intruders.

6. MAINTENANCE

6.1. Battery Care

- Regularly charge the 8000mAh battery pack to maintain optimal performance.
- For extended outdoor use, consider pairing with a GardePro SP350 or SP1000 solar panel (sold separately) for continuous power.

6.2. Cleaning

- Gently clean the camera lens and PIR sensors with a soft, dry cloth to ensure clear images and accurate motion detection.

- Wipe the camera casing with a damp cloth as needed. Avoid harsh chemicals.

6.3. Storage

When not in use for extended periods, store the camera in a cool, dry place with the battery partially charged.

6.4. Weather Protection

The GardePro X60 Pro Max is designed with an IP66 waterproof rating, making it resistant to dust and strong jets of water. While durable, avoid submerging the camera in water.



Image: The GardePro X60 Pro Max camera mounted on a tree during rainfall, demonstrating its IP66 waterproof and weather-resistant design.

7. TROUBLESHOOTING

If you encounter issues with your GardePro X60 Pro Max, refer to the following common problems and solutions:

- **Camera not powering on:**
Ensure the battery is fully charged and correctly inserted. Check the power switch position.
- **No cellular signal or connectivity:**
Verify the SIM card is active and has a sufficient data plan. Check the camera's location for network coverage. Try restarting the camera.
- **No photos/videos captured:**
Check motion sensor sensitivity settings. Ensure the camera is in the correct operating mode (Photo, Video, or Photo+Video). Verify there are no obstructions in front of the PIR sensors.
- **Blurry images or videos:**
Clean the camera lens. Ensure the camera is stable and not vibrating. Check focus settings if applicable (though most trail cameras are fixed focus).
- **App connectivity issues:**
Ensure your smartphone has a stable internet connection. Restart the app and the camera. Re-pair the camera if necessary.

8. SPECIFICATIONS

Feature	Specification
Model Name	X60PLMB
Effective Still Resolution	48 MP
Video Capture Resolution	1296p
Video Capture Format	MP4, MOV
Night Vision Range	100 Feet
Viewing Angle	70 Degrees
Connectivity Protocol	Cellular
Compatible Networks	Verizon, AT&T, T-Mobile
Power Source	Battery Powered (8000mAh included)
Built-in Memory	32GB
Water Resistance Level	Waterproof (IP66)
Control Method	App
Item Weight	1.72 pounds
Package Dimensions	8.43 x 5.51 x 3.31 inches

9. WARRANTY AND SUPPORT

GardePro products are designed for reliability and performance. For specific warranty details, please refer to the warranty card included with your product or visit the official GardePro website. For technical assistance, troubleshooting, or customer service inquiries, please contact GardePro customer support through their official channels.

You can find more information and support resources by visiting the [GardePro Store on Amazon](#).