



Manuals.plus /

› SweetLF /

› SweetLF Electric Shaver SWS7105 Instruction Manual

SweetLF SWS7105

SweetLF Electric Shaver SWS7105 Instruction Manual

Model: SWS7105

1. IMPORTANT SAFETY INFORMATION

Please read all instructions carefully before using the SweetLF Electric Shaver SWS7105. Keep this manual for future reference.

- Always unplug and remove the charging cable before using the shaver. Do not use the shaver while it is charging.
- Keep the shaver clean and dry to prevent bacterial growth.
- Exercise caution when using the shaver to avoid cuts from the sharp blades.
- This appliance is not intended for use by persons (including children) with reduced physical, sensory, or mental capabilities, or lack of experience and knowledge, unless they have been given supervision or instruction concerning use of the appliance by a person responsible for their safety.
- Children should be supervised to ensure that they do not play with the appliance.

2. PRODUCT COMPONENTS

The SweetLF Electric Shaver SWS7105 package includes the following items:

- 1x Electric Shaver
- 1x Air-Drying Base
- 1x Charger
- 1x USB Charging Cable
- 1x Cleaning Brush
- 1x Protective Cap
- 1x Instruction Manual (this document)



Image 2.1: SweetLF Electric Shaver SWS7105 and its Air-Drying Base.

3. PRODUCT FEATURES

3.1 Air-Drying Base

The air-drying base is designed to quickly remove moisture from the shaver, helping to prevent rust and extend the life of the blades. It also provides a designated storage location, maintaining tidiness.



Image 3.1: The electric shaver placed in its air-drying base.

3.2 360° Floating Head for a Close Shave

The shaver features a 360° floating head that adapts to the contours of your face, providing a close and efficient shave. The updated skin-safe blades are designed for comfort.

Updated Skin Safe Blade

Double ring curved blades,
more shaving area.

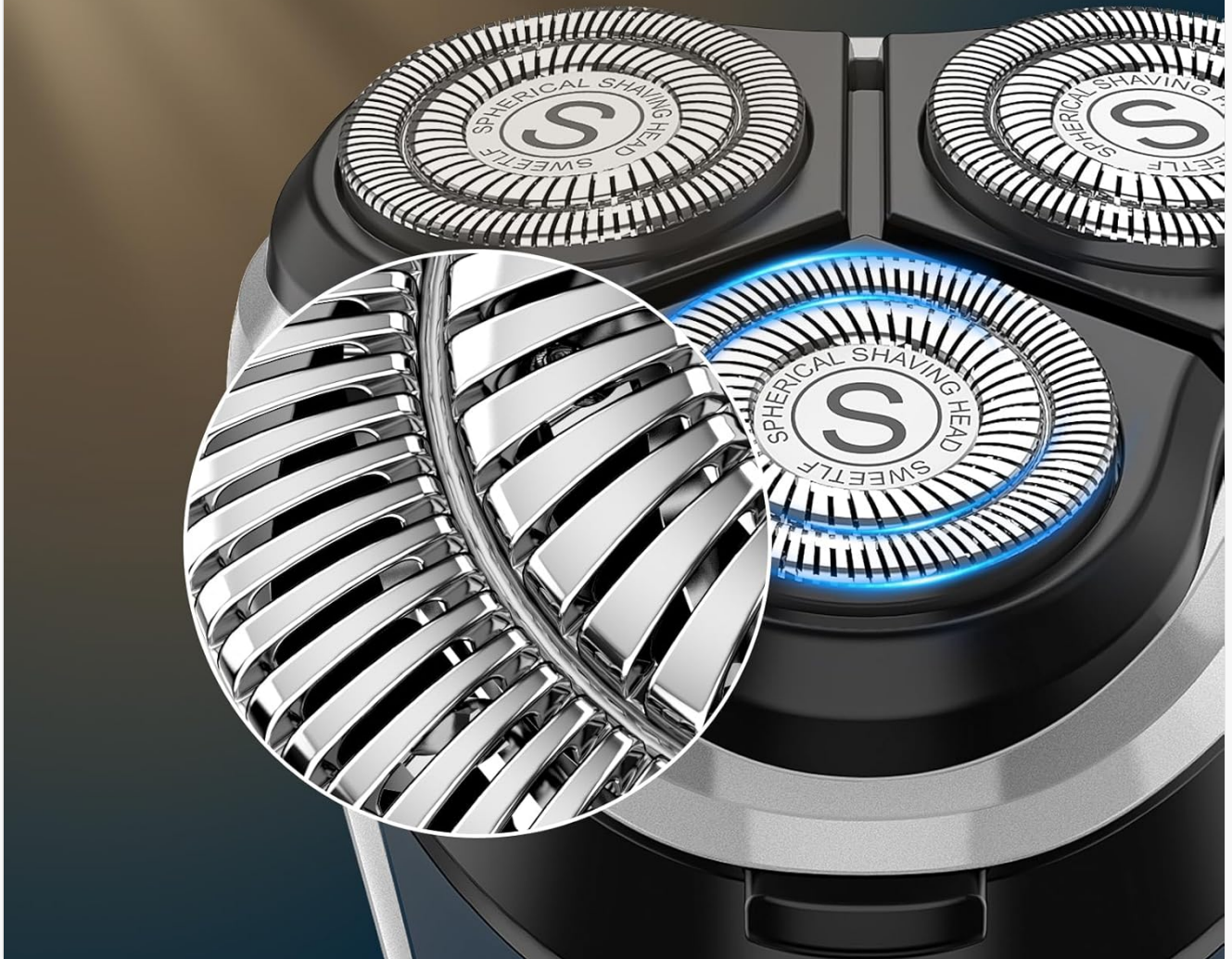


Image 3.2: Detail of the updated skin-safe blades on the shaver head.

3.3 Long-Lasting Battery & Fast Charging

A full charge provides up to 120 minutes of shaving time. The Type-C charging port allows for fast and convenient power-up. The shaver supports both corded and cordless use.

Plug and Play, Worry-Free Always



1 hour charge



120 mins shaving



5-level battery
indicator



Image 3.3: The shaver connected via Type-C cable, displaying battery level.

3.4 Whole Body Waterproof & Wet/Dry Shaving

The shaver is fully waterproof (IPX7 rated), allowing for versatile wet or dry shaving. It can be used with shaving gel or foam, or for a quick dry shave. Cleaning is easy by rinsing under running water.



Shave Wet or Dry

The waterproof design allows you to shave wet or dry with foam, gel or even in the shower.

Image 3.4: Demonstrating wet shaving with the waterproof electric shaver.

3.5 Pop-Up Trimmer for Precision Edging

A built-in pop-up trimmer allows for precise detailing of sideburns, necklines, and other areas requiring accuracy.

3.6 Quiet Operation

The electric shaver is designed with a low-noise motor (below 60 dB) for a comfortable and gentle shaving experience.

4. SETUP

4.1 Initial Charging

1. Connect the USB charging cable to the shaver and the charger.
2. Plug the charger into a power outlet.
3. The battery indicator lights on the shaver will illuminate to show the charging progress.

4. Allow approximately 60 minutes for a full charge. The shaver can be used for up to 120 minutes on a full charge.

5. OPERATING INSTRUCTIONS

5.1 Shaving

For optimal results, ensure your skin is clean before shaving. You can choose between wet or dry shaving:

- **Dry Shaving:** Turn on the shaver and move it in small circular motions over your face and neck.
- **Wet Shaving:** Apply shaving foam or gel to your face. Turn on the shaver and move it in small circular motions. Rinse the shaver head frequently during wet shaving.

The 360° floating head will adjust to your facial contours for a smooth shave.



**Effortlessly shave 1,
3 and 7-day beards**

Constant RPMs prevent the blade
from slowing down.

Image 5.1: The shaver effectively handles various beard lengths.

5.2 Using the Pop-Up Trimmer

To activate the pop-up trimmer, slide the switch located on the back of the shaver upwards. Use the trimmer for precise shaping of sideburns, mustaches, or necklines. After use, slide the switch back down to retract the trimmer.

5.3 Using the Air-Drying Base

After cleaning your shaver, place it into the air-drying base. The base will activate its high-speed smart fan to dry the shaver. The drying process can be set for an adjustable 30-minute or 60-minute auto-stop setting. This helps maintain hygiene and prolongs the shaver's lifespan.

Your browser does not support the video tag.

Video 5.1: Demonstration of the SweetLF Series 7105 Air-Drying Base in operation, showing the shaver being cleaned and then dried in the base.

6. MAINTENANCE AND CLEANING

6.1 Cleaning the Shaver

1. Ensure the shaver is turned off and unplugged from any charging cable.
2. Press the release button to open the shaver head.
3. Rinse the shaver head and the internal cutting unit under running tap water until all hair residue is removed.
4. Use the provided cleaning brush to remove any stubborn hair particles.
5. Close the shaver head.
6. Place the shaver in the air-drying base to dry thoroughly.

6.2 Air-Drying Base Benefits

The air-drying base actively dries the shaver, which is crucial for hygiene and longevity. This process helps to:

- Prevent rust on the blades.
- Reduce the growth of bacteria by over 50%.
- Keep the shaver in optimal condition for consistent performance.

7. TROUBLESHOOTING

If you encounter any issues with your SweetLF Electric Shaver SWS7105, please refer to the following common questions and solutions:

- **How long can the shaver be used on a single charge?**
A single full charge can last up to 120 minutes, which means approximately 40 shaves at 3 minutes each.
- **Can the shaver be used for both wet and dry shaving?**
Yes, the shaver is IPX7 Waterproof, making it suitable for both wet and dry use.
- **Can the electric shaver be used while charging?**
Yes, the shaver supports plug-and-play functionality, allowing for both corded and cordless use.

For further assistance, please contact SweetLF customer support.

8. SPECIFICATIONS

Feature	Detail
Brand Name	SweetLF
Model Name	SWS7105
Item Model Number	SWS7105
Power Source	Battery Powered
Battery Type	Lithium-Ion, 2000mAh (Built-in, Non-removable)
Battery Average Life	120 minutes
Charging Time	Approx. 60 minutes
Head Type	Rotary
Number of Blades	3
Blade Material	Stainless Steel
Waterproof Rating	IPX7 (Whole body waterproof)
Additional Features	Air Drying Base, Rechargeable, Pivoting Head, Pop-Up Trimmer, Cordless and Corded shaving, Wet or Dry Shaving, TYPE-C Charging
Item Weight	0.43 Kilograms (15.2 ounces)
Package Dimensions	7.36 x 4.8 x 4.02 inches
Recommended Uses	Face

9. WARRANTY AND SUPPORT

SweetLF is committed to providing quality products and customer satisfaction.

- **Warranty:** This product comes with a 2-year warranty.
- **Technical Support:** Lifetime technical assistance is available.
- **Returns:** Free returns and 100% refund policy are offered.
- **Customer Service:** 24/7 fast support is provided for any inquiries or issues.

For support, please visit the official SweetLF website or contact their customer service directly.