

[Manuals.plus](#) /

> [OUKITEL](#) /

> OUKITEL C1 Pro Android 15 Cell Phone User Manual

## OUKITEL C1 Pro

# OUKITEL C1 Pro Android 15 Cell Phone User Manual

Model: C1 Pro

## 1. INTRODUCTION

---

This manual provides essential instructions for setting up, operating, maintaining, and troubleshooting your OUKITEL C1 Pro Android 15 Cell Phone. Please read this manual thoroughly before using your device to ensure proper function and longevity.



Image 1.1: OUKITEL C1 Pro device overview, showcasing its design and key features like Android 15 and memory specifications.

## 2. PACKAGE CONTENTS

Upon opening the package, verify that all items listed below are present and in good condition:

- 1x OUKITEL C1 Pro Cell Phone
- 1x 10W Quick Charger
- 1x Phone Case
- 1x Type-C Data Cable
- 1x SIM Card Needle



Image 2.1: Visual representation of the items included in the OUKITEL C1 Pro retail box.

## 3. SETUP GUIDE

### 3.1. SIM Card and TF Card Installation

1. Locate the SIM card tray on the side of your OUKITEL C1 Pro.
2. Insert the provided SIM card needle into the small hole next to the tray to eject it.
3. Carefully place your Nano-SIM cards (up to two) and/or a TF (microSD) card into the designated slots on the tray. Ensure the metal contacts face downwards.
4. Gently push the tray back into the phone until it is flush with the device body.



Image 3.1: Detailed view of the triple card slot for two Nano-SIMs and one TF card.

### 3.2. Initial Charging and Power On

1. Connect the Type-C data cable to the phone's charging port and the 10W quick charger. Plug the charger into a power outlet.
2. Allow the phone to charge for at least 30 minutes before initial use, or until the battery indicator shows sufficient charge.
3. Press and hold the Power button (located on the right side of the device) until the OUKITEL logo appears on the screen.
4. Follow the on-screen prompts to complete the initial setup, including language selection, Wi-Fi

connection, and Google account login.

### 3.3. Security Setup (Fingerprint & Face Unlock)

For enhanced security, configure fingerprint and face unlock:

1. Navigate to **Settings > Security > Fingerprint Unlock** or **Face Unlock**.
2. Follow the on-screen instructions to register your fingerprint(s) or face data. Ensure your fingers are clean and dry for fingerprint registration, and your face is well-lit for face unlock setup.

## 4. OPERATING YOUR DEVICE

### 4.1. Android 15 Operating System

Your OUKITEL C1 Pro runs on the latest Android 15 operating system, offering a smooth and intuitive user experience. It includes features like Google Gemini, an AI assistant designed to enhance productivity and interaction.



Image 4.1: The Android 15 operating system interface on the OUKITEL C1 Pro.

### 4.2. Display and Navigation

The device features a 6.52-inch HD+ IPS display with a resolution of 1280\*576 and a 60Hz refresh rate, providing clear visuals. Navigation is primarily touch-based. Swipe, tap, and pinch gestures are used to interact with the interface.

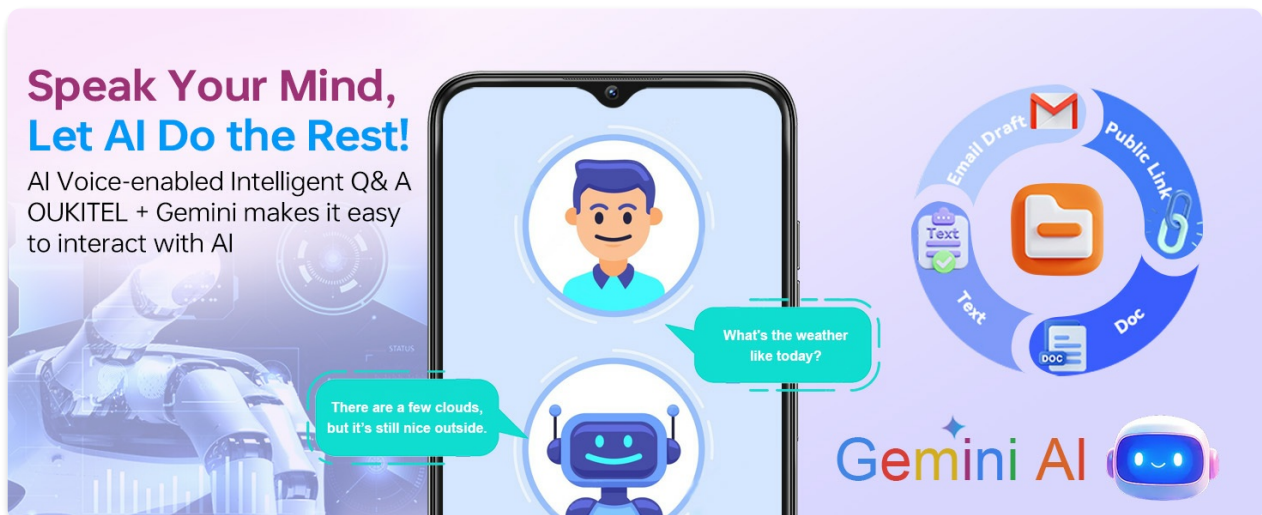


Image 4.2: The 6.52-inch HD+ display, ideal for media consumption.

### 4.3. Camera Functions

The OUKITEL C1 Pro is equipped with a 13MP main camera and a 5MP front camera. Access the camera application from the home screen or app drawer.

- **Main Camera (13MP):** For capturing high-resolution photos and videos.
- **Front Camera (5MP):** Ideal for selfies and video calls.
- **Camera Modes:** Explore various modes such as Time-lapse, Slow Motion, Panorama, Portrait, and Night mode for diverse photographic effects.



Image 4.3: The 13MP main camera system.

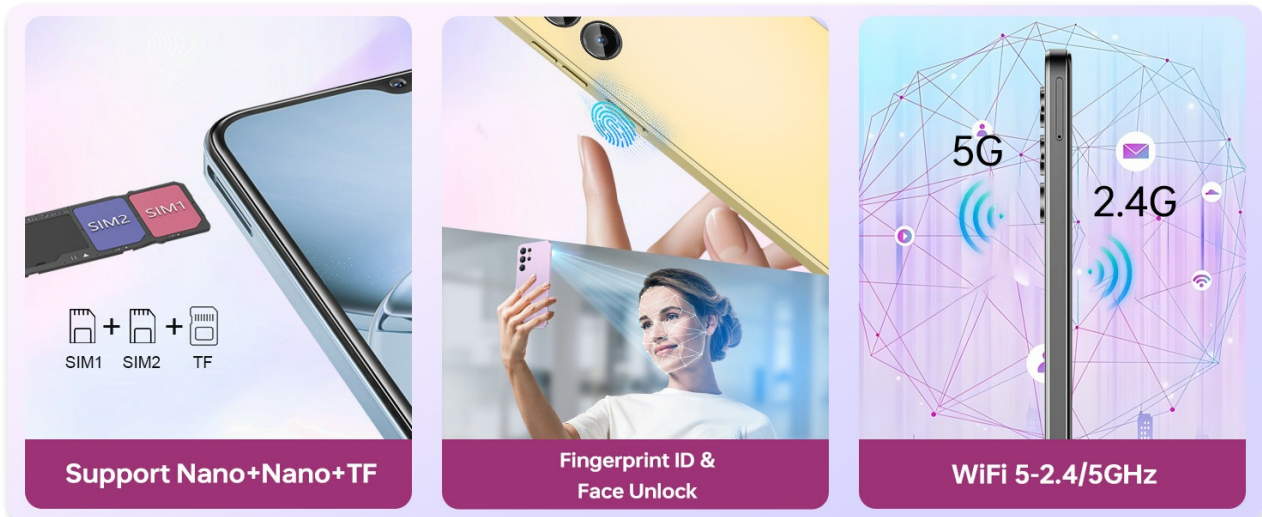


Image 4.4: The 5MP front camera in use.



Image 4.5: Overview of available camera modes.

#### 4.4. Connectivity

- **Wi-Fi:** Connect to wireless networks via Wi-Fi 5 (2.4/5G) for internet access. Go to **Settings > Network & internet > Wi-Fi**.
- **Bluetooth:** Pair with Bluetooth devices like headphones or speakers. Go to **Settings > Connected devices > Bluetooth**.
- **GPS:** Utilize GPS, GLONASS, and Galileo for accurate location services and navigation.
- **4G Dual SIM:** Supports two 4G SIM cards simultaneously for flexible network usage.

#### 4.5. Special Features

- **Google Gemini AI:** Your personal AI assistant integrated with Android 15 for quick information and task management.
- **OTG (On-The-Go):** Allows the phone to act as a host for USB devices, such as flash drives, or to reverse charge other devices.
- **3.5mm Headphone Jack:** For connecting wired headphones.

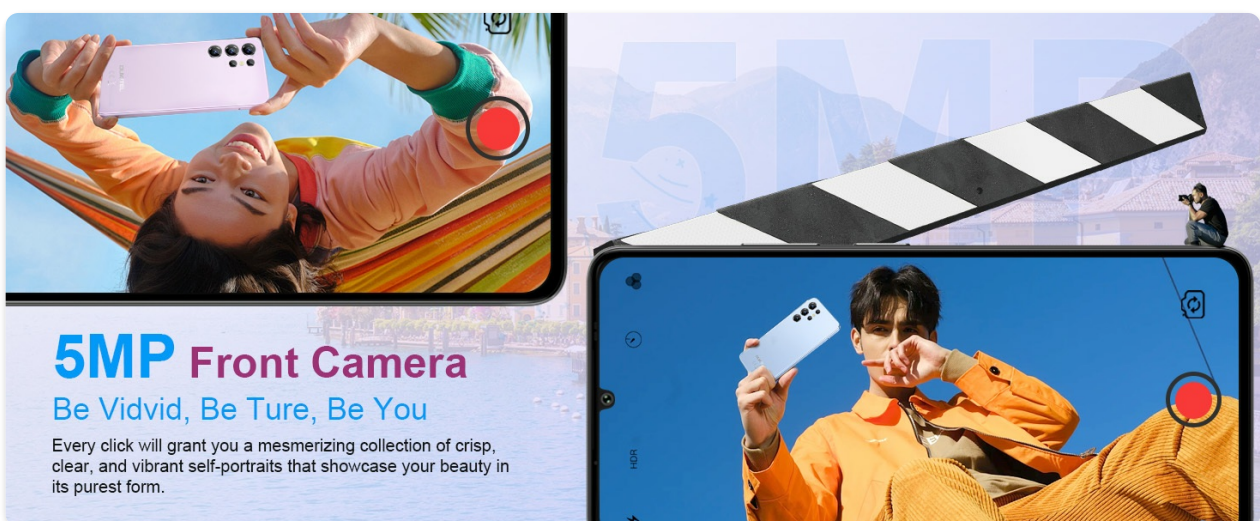


Image 4.6: Key features: OTG, GPS, and 3.5mm audio jack.

## 5. MAINTENANCE

### 5.1. Battery Care

The OUKITEL C1 Pro is equipped with a 5150mAh battery. To maximize battery life:

- Avoid extreme temperatures.
- Use the provided 10W charger for optimal charging.
- Do not let the battery completely drain frequently.
- Unplug the charger once the battery is fully charged.



Image 5.1: Battery capacity and estimated usage statistics.

## 5.2. Software Updates

Regularly check for and install system updates to ensure your device has the latest features, security patches, and performance improvements. Go to **Settings > System > System update**

## 5.3. Cleaning the Device

Use a soft, lint-free cloth to clean the screen and body of your phone. Avoid using harsh chemicals or abrasive materials that could damage the device.

## 5.4. Storage Management

Your phone comes with 256GB of internal storage, expandable up to 1TB with a TF card. Regularly manage your storage by deleting unnecessary files and uninstalling unused applications to maintain optimal performance.



Image 5.2: Memory specifications: 16GB RAM and 256GB ROM, expandable up to 1TB.

## 6. TROUBLESHOOTING

If you encounter issues with your OUKITEL C1 Pro, refer to the following common solutions:

- **Device Not Powering On:** Ensure the battery is charged. Connect the charger and wait a few minutes before attempting to power on again.
- **Network Connectivity Issues:** Check if your SIM card is properly inserted. Verify that mobile data is enabled in settings. For Wi-Fi, ensure you are within range and have the correct password.
- **App Crashes/Freezes:** Close and restart the application. If the issue persists, clear the app's cache (**Settings > Apps > [App Name] > Storage & cache > Clear cache**) or uninstall and reinstall the app.
- **Slow Performance:** Free up storage space, close background applications, or restart the device.
- **Carrier Compatibility:** Please note that the OUKITEL C1 Pro supports T-Mobile but **does not support Verizon or AT&T** networks. Ensure your carrier is compatible with the device's frequency bands (GSM:B2/3/5/8, WCDMA:B1/2/4/5/8, FDD:B1/2/3/4/5/7/8/12/17/19/20/25/26/28A/28B/66).



Image 6.1: Important information regarding carrier compatibility.

## 7. SPECIFICATIONS

Feature	Specification
Model Name	OUKITEL C1 Pro
Operating System	Android 15
Display Size	6.52 Inches
Resolution	1280*576
Refresh Rate	60 Hz
RAM	16 GB (4GB physical + 12GB virtual)
Memory Storage Capacity	256 GB

Feature	Specification
Expandable Memory	Up to 1TB (TF Card)
Battery Power Rating	5150 Milliamp Hours
Main Camera	13 MP
Front Camera	5 MP
Cellular Technology	4G
Wireless Carrier Support	T-Mobile (Does not support Verizon/AT&T)
Connectivity Technologies	Bluetooth, Wi-Fi 2.4/5G
GPS	GPS, GLONASS, Galileo
Audio Jack	3.5 mm
Charging Port	Type-C
Special Features	1TB Expandable Memory, 4G Dual SIM, Built-In GPS, Supports Type-C, Supports USB OTG, Fingerprint Unlock, Face Unlock
Item Weight	15.5 ounces (approx. 214g)
Dimensions	9.61 x 7.01 x 2.6 inches (Package), 9.18mm (Thickness)

## 8. WARRANTY AND SUPPORT

---

For warranty information, please refer to the documentation provided with your purchase or contact your retailer. Specific warranty terms and conditions may vary by region and seller.

For technical support or further assistance, please visit the official OUKITEL website or contact their customer service department. Keep your purchase receipt and device serial number handy when seeking support.