

[manuals.plus](#) /

› [maXpeedingrods](#) /

› [maXpeedingrods Trailer Hitch Receiver Installation and User Manual for Honda TRX 420 500 520 700, Rincon 650 680 \(2003-2025 IRS\)](#)

maXpeedingrods NJ23ZZ

maXpeedingrods 2-Inch Trailer Hitch Receiver User Manual

Model: NJ23ZZ

1. INTRODUCTION

This manual provides detailed instructions for the installation, operation, and maintenance of your maXpeedingrods 2-inch rear trailer hitch receiver. Designed for specific Honda ATV models, this hitch receiver allows for the attachment of various towing accessories. Please read this manual thoroughly before installation and use to ensure proper function and safety.



Figure 1: maXpeedingrods 2-inch trailer hitch receiver with included components and packaging.

2. VEHICLE FITMENT

This 2-inch rear trailer hitch receiver is compatible with the following Honda ATV models:

- Rincon 650: 2003-2005
- Rincon 680: 2006-2023
- Rancher TRX420 (Independent Rear Suspension ONLY): 2009-2025
- Foreman TRX500 (Independent Rear Suspension ONLY): 2015-2019
- Rubicon TRX500 (Independent Rear Suspension ONLY): 2015-2019
- Rubicon TRX520 (All Models): 2020-2025

Vehicle Fitment

Make	Model	Year
For Honda	Rincon 650	2003–2005
	Rincon 680	2006–2023
	Rancher TRX420 (Independent Rear Suspension ONLY)	2009–2025
	Foreman TRX500 (Independent Rear Suspension ONLY)	2015–2019
	Rubicon TRX500 (Independent Rear Suspension ONLY)	
	Rubicon TRX520 (All Models)	2020–2025

MAX SPEEDING RODS Since 2006
YOUR GATEWAY TO PERFORMANCE DRIVING

Figure 2: Detailed vehicle fitment chart for the maXpeedingrods hitch receiver.

3. PRODUCT FEATURES

- **Standard 2-inch Receiver:** Designed to accept virtually any 2-inch x 2-inch shank, accommodating various towing accessories such as trailer hitch ball mounts, tow hooks, cargo carriers, and bike carriers.
- **Bolt-On Installation:** Features a direct bolt-on design, requiring no drilling for installation.
- **Durable Construction:** Manufactured from heavy-duty carbon steel with thick welds for superior strength and long-lasting durability.
- **Corrosion Resistance:** Finished with a black powder coating to provide long-lasting protection against rust and corrosion.
- **Rubber Hitch Cover:** Includes an effective rubber hitch cover to prevent soil, mud, dirt, dust, rain, snow, ice, and small animals from entering the receiver opening, enhancing rust resistance.
- **Quality Tested:** Undergoes a 180-hour salt spray test to ensure high corrosion resistance and a long service life.

-  Heavy duty steel construction
-  Powder coated & shot-blasting surface
-  Vehicle-specific design



Sturdy & Durable



**Enhance the
fatigue strength**



No drilling & welding

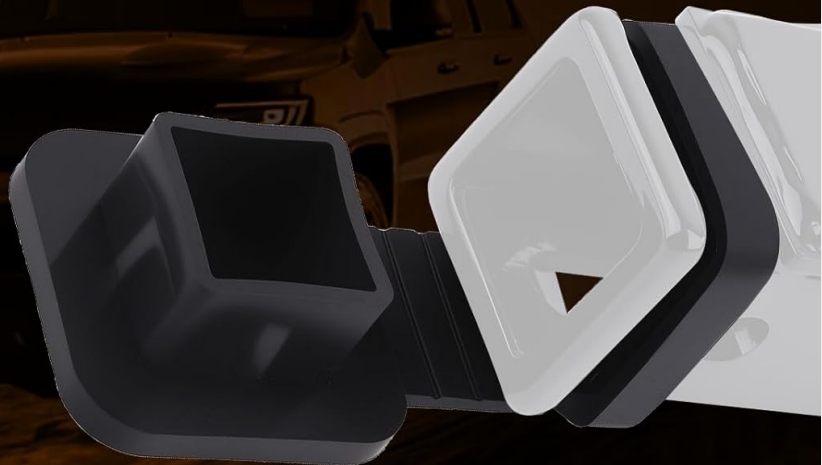
MAX SPEEDING RODS Since 2006
YOUR GATEWAY TO PERFORMANCE DRIVING

Figure 3: Illustration of the hitch receiver's robust construction and finish.

Effective Rubber Hitch Cover

The rubber hitch cover prevents soil, mud, dirt dust, rain, snow, ice and small animals from entering – Rust-Resistance

- Dust
- Ice
- Rain
- Rat
- Cockroach



MAX SPEEDING RODS Since 2006
YOUR GATEWAY TO PERFORMANCE DRIVING

Figure 4: The included rubber hitch cover provides protection for the receiver opening.

4. PACKAGE CONTENTS

Please verify that all components are present before beginning installation:

- 1 x maXspeedingrods 2-inch Trailer Hitch Receiver
- Mounting Hardware (Bolts, Nuts, Washers)
- 1 x Rubber Hitch Cover
- 1 x Instruction Manual (This Document)

5. SETUP (INSTALLATION)

Tools Required: Wrench, Socket Set

Installation Steps:

1. **Safety First:** Ensure your ATV is parked on a level surface, the engine is off, and the parking brake is engaged. For added safety, consider blocking the wheels.
2. **Locate Mounting Points:** Identify the existing mounting points on the rear frame of your ATV. These are typically where the factory hitch or a similar accessory would attach.

3. **Position the Hitch Receiver:** Align the maXpeedingrods hitch receiver with the mounting points on your ATV's frame.
4. **Insert Bolts:** Insert the provided bolts through the hitch receiver and the ATV's frame mounting holes.
5. **Secure with Washers and Nuts:** Place the washers and nuts onto the bolts and hand-tighten them.
6. **Final Tightening:** Using a wrench and socket, progressively tighten all nuts and bolts evenly until secure. Do not overtighten. Refer to your ATV's service manual for specific torque specifications if available.
7. **Install Rubber Hitch Cover:** Once the hitch is securely mounted, insert the rubber hitch cover into the 2-inch receiver opening to protect it from debris.
8. **Verify Installation:** Double-check all connections to ensure they are tight and the hitch receiver is firmly attached to the ATV.

This hitch receiver is designed for bolt-on installation without the need for drilling or welding.



Figure 5: Visual guide for the bolt-on installation of the hitch receiver.

6. OPERATING THE HITCH RECEIVER

Once installed, your maXpeedingrods 2-inch trailer hitch receiver is ready for use with compatible towing accessories.

- **Accessory Attachment:** Insert your desired 2-inch shank accessory (e.g., ball mount, cargo carrier) into the

receiver opening.

- **Secure with Pin:** Secure the accessory using a hitch pin and clip (not included with this receiver, typically supplied with the accessory). Ensure the pin passes completely through both the accessory shank and the receiver tube, and the clip is properly engaged.
- **Load Capacity:** Always adhere to the towing capacity limits of your ATV and the attached accessory. Do not exceed the lowest rated component in your towing setup.
- **Pre-Operation Check:** Before each use, verify that the hitch receiver and all attached components are securely fastened and in good condition.



Figure 6: Examples of wide applications for the 2-inch hitch receiver.

7. MAINTENANCE

Regular maintenance will ensure the longevity and safe operation of your hitch receiver.

- **Regular Inspection:** Periodically inspect the hitch receiver for any signs of wear, damage, or corrosion. Pay close attention to welds and mounting points.
- **Check Fasteners:** Ensure all bolts and nuts remain tight. Re-tighten if any looseness is detected.
- **Cleaning:** Clean the hitch receiver regularly, especially after exposure to dirt, mud, salt, or harsh weather conditions. Use mild soap and water, then rinse thoroughly and dry.
- **Corrosion Protection:** Although powder-coated for corrosion resistance, applying a thin layer of automotive

wax or a rust-inhibiting spray to exposed metal surfaces can provide additional protection, especially in corrosive environments.

- **Hitch Cover Use:** Always keep the rubber hitch cover installed when the receiver is not in use to prevent debris and moisture accumulation inside the tube.

8. TROUBLESHOOTING

If you encounter issues with your hitch receiver, consider the following:

- **Loose Hitch:** If the hitch feels loose after installation, re-check all mounting bolts and nuts. Ensure they are tightened to the appropriate specifications.
- **Accessory Fit Issues:** Verify that your accessory has a standard 2-inch shank. If it's difficult to insert, check for any obstructions inside the receiver tube or deformities on the accessory shank. Do not force accessories into the receiver.
- **Rust/Corrosion:** While designed to be rust-resistant, prolonged exposure to harsh elements without proper cleaning and maintenance can lead to surface rust. Clean affected areas and apply a rust-inhibiting coating.
- **Unusual Noises:** If you hear rattling or clunking noises during operation, ensure the hitch pin is securely in place and that the accessory is not excessively loose within the receiver. Check for any loose components on the hitch itself.

For issues not resolved by these steps, please contact maXpeedingrods customer support.

9. SPECIFICATIONS

Brand	maXpeedingrods
Model Number	NJ23ZZ
Receiver Size	2 inches x 2 inches
Mounting Style	Bolt-On (No Drilling)
Material	Heavy-duty Carbon Steel
Finish	Black Powder Coated
Item Weight	6.61 pounds (3000 Grams)
Product Dimensions	8.35 x 7.17 x 7.13 inches

10. WARRANTY

maXpeedingrods warrants its products against manufacturing defects under normal use for a period of **1 year** from the date of purchase. This warranty covers defects in materials and workmanship. It does not cover damage resulting from improper installation, misuse, abuse, neglect, accident, or normal wear and tear. Please retain your proof of purchase for warranty claims.

11. SUPPORT

For technical assistance, warranty claims, or any questions regarding your maXpeedingrods trailer hitch receiver, please contact maXpeedingrods customer service. Lifetime technical support is provided. Please visit the official maXpeedingrods website or refer to your purchase documentation for current contact

information.