



Manuals.plus /

› TopMate /

› TopMate ES33 Powered Scooter User Manual

TopMate ES33

TopMate ES33 Powered Scooter User Manual

Model: ES33

Brand: TopMate

1. IMPORTANT SAFETY INFORMATION

Read this manual thoroughly before operating the TopMate ES33 Powered Scooter. Failure to follow instructions and safety warnings may result in serious injury or damage to the scooter.

- Always wear a helmet and appropriate safety gear when riding.
- Do not operate the scooter under the influence of alcohol or drugs.
- Ensure all components are securely fastened before each ride.
- Observe local traffic laws and regulations.
- Avoid riding in heavy rain, snow, or icy conditions.
- Do not exceed the maximum weight limit of 220.5 pounds (100 kg).
- Keep hands and feet away from moving parts.

2. PRODUCT OVERVIEW

The TopMate ES33 is a lightweight, foldable 3-wheel electric scooter designed for adults, offering portability and ease of use for commuting and travel. It features a removable battery, adjustable speed settings, and a reverse function.



Figure 2.1: The TopMate ES33 Powered Scooter in its unfolded state, showcasing its three-wheel design, seat, and handlebars.

3. PACKAGE CONTENTS

Verify that all items are present in the package:

- TopMate ES33 Powered Scooter (main unit with seat and wheels)
- Removable Lithium Battery (36V 7.8AH)
- Battery Charger
- Key Switch
- User Manual (this document)
- Handlebar (may require attachment)

4. SETUP AND ASSEMBLY

4.1 Unfolding the Scooter

The TopMate ES33 features a new folding mechanism for convenient storage and transport. Follow these steps to unfold the scooter:

1. **Step 1:** Lift the seat upwards to its highest position.
2. **Step 2:** Lower the seat back down. This action helps to align the folding mechanism.
3. **Step 3:** Merge the main body sections of the scooter together until they lock into place.
4. **Step 4:** Push the front folding switch upwards and simultaneously rotate the front section of the scooter to the other side until it locks securely.

EASY TO CARRY

Foldable design can save storage space

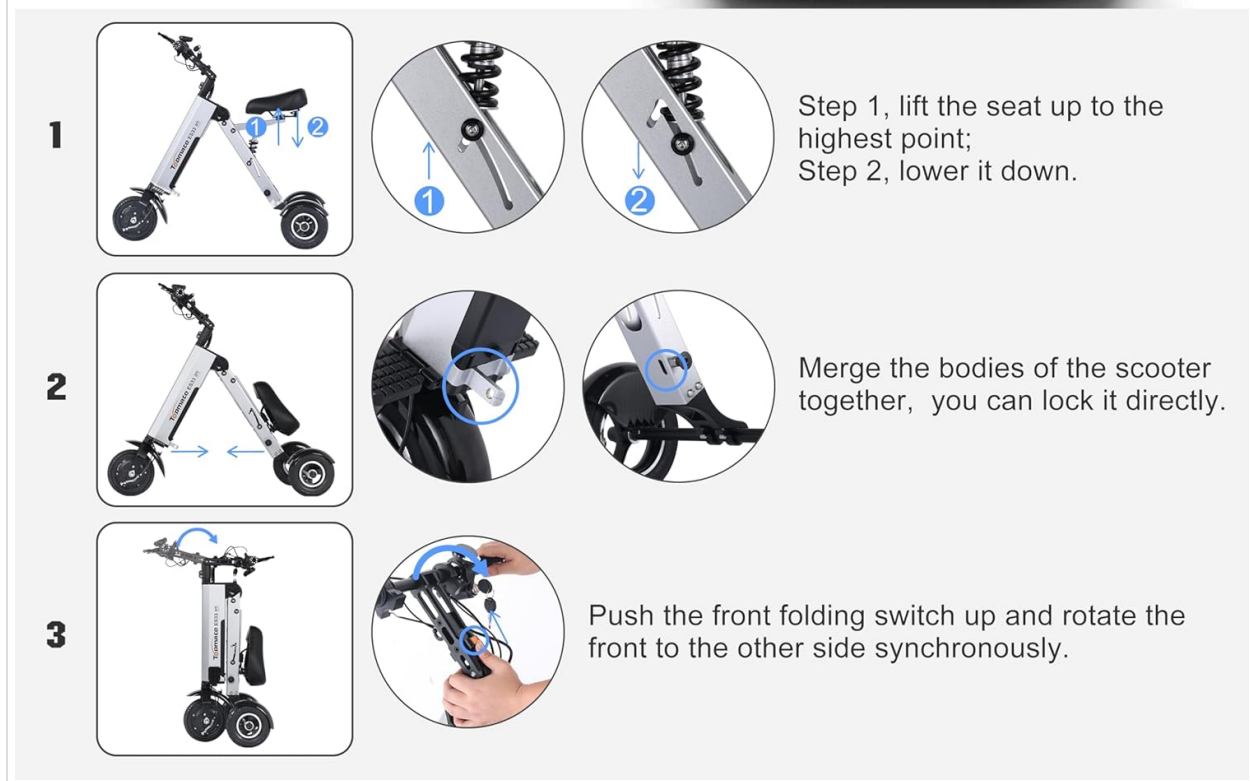


Figure 4.1: Visual guide demonstrating the three main steps for unfolding the TopMate ES33 scooter, including details of the locking mechanisms.

4.2 Battery Installation and Initial Charge

The scooter comes with a removable lithium battery. Ensure the battery is fully charged before first use.

1. Locate the battery compartment, typically under the footrest or within the main frame.
2. Insert the removable battery into its designated slot. Ensure it clicks securely into place.
3. Connect the charger to the scooter's charging port, then plug the charger into a standard wall outlet.
4. Allow the battery to charge completely. The charging indicator on the charger will change color (e.g., red

to green) when fully charged. Charging typically takes approximately 3.5 hours.

5. Once charged, disconnect the charger.



Figure 4.2: Illustration showing the removable battery being charged via an external power adapter, with the battery integrated into the scooter's frame.

5. OPERATION

5.1 Powering On/Off and Key Switch

To power on the scooter, insert the key into the key switch and turn it to the 'ON' position. To power off, turn the key to the 'OFF' position and remove it. The key switch also provides a physical lock for enhanced security.

5.2 Speed Adjustment

The TopMate ES33 offers three adjustable speed settings to suit different riding conditions. These can typically be selected via a button on the handlebar display.

- **Speed Mode I (Low):** Approximately 3 mph (4.8 km/h). Suitable for turning or crowded areas.
- **Speed Mode II (Medium):** Approximately 7 mph (11 km/h). Ideal for daily driving.
- **Speed Mode III (High):** Approximately 15 mph (24 km/h). Use with caution and attention to safety.

5.3 Reverse Function

The scooter is equipped with a convenient reverse function. Press the designated button (often labeled 'D/R' or similar) on the handlebar to switch between forward and reverse modes. The maximum reverse speed is approximately 3 mph.

5.4 LED Display Functions

The integrated LED display provides essential riding information:

- **Power Display:** Indicates the current battery charge level. A full display indicates a fully charged battery, while a low segment indicates approximately 20% battery remaining, signaling a need for charging.
- **Speed Display:** Shows the current riding speed.
- **Mileage Display:** Tracks the distance traveled.



Figure 5.1: Close-up of the scooter's handlebar display, showing the power, speed, and mileage indicators, along with the D/R button for forward/reverse and the speed mode selection (I, II, III).

6. BATTERY INFORMATION

The TopMate ES33 is powered by a 281Wh (36V 7.8Ah) removable lithium battery, offering a maximum range of 15.53-18.64 miles (25-30 km) on a full charge. The removable design allows for convenient charging and potential battery customization.

281WH REMOVABLE LITHIUM BATTERY

Can be taken on board the plane
(94Wh battery can be customized if required)

 Battery capacity
36V7.8Ah

 Battery range
25-30km/
15.53-18.64mile

 Charging time
3.5 hours

REMOVABLE BATTERY

Figure 6.1: Image illustrating the removable lithium battery, its capacity (36V 7.8Ah), range (15.53-18.64 miles), and charging time (3.5 hours). A person is shown with the scooter at an airport, highlighting its travel-friendly design.

6.1 Battery Customization

For specific needs, a smaller battery capacity (e.g., 94Wh) may be available. Contact TopMate customer support for information on customizable battery services.

7. MAINTENANCE

Regular maintenance ensures the longevity and safe operation of your scooter.

7.1 General Cleaning

- Wipe down the scooter with a damp cloth after use. Avoid using high-pressure water jets directly on electrical components.
- Do not use abrasive cleaners or solvents that could damage the finish.

7.2 Battery Care

- Charge the battery regularly, even if the scooter is not in frequent use, to maintain battery health.

- Avoid completely draining the battery before recharging.
- Store the battery in a cool, dry place away from direct sunlight and extreme temperatures.

7.3 Tire Pressure

Periodically check the tire pressure of the 8-inch pneumatic tires. Maintain the recommended pressure as specified on the tire sidewall or in the scooter's specifications to ensure optimal performance and safety.

8. TROUBLESHOOTING

This section addresses common issues you might encounter with your TopMate ES33 scooter.

Problem	Possible Cause	Solution
Scooter does not power on	Battery is not installed correctly or is discharged. Key switch is off.	Ensure battery is fully inserted and charged. Turn key switch to 'ON' position.
Reduced range or power	Low battery charge. Overloaded scooter. Low tire pressure.	Fully charge the battery. Ensure rider weight is within limits. Check and adjust tire pressure.
Unusual noises during operation	Loose components. Debris in wheels.	Inspect all fasteners and tighten if necessary. Check wheels for obstructions.
Brakes not responding effectively	Brake cable adjustment needed. Worn brake pads.	Adjust brake cable tension. Inspect and replace brake pads if worn.

If you encounter issues not listed here or require further assistance, please contact TopMate customer support.

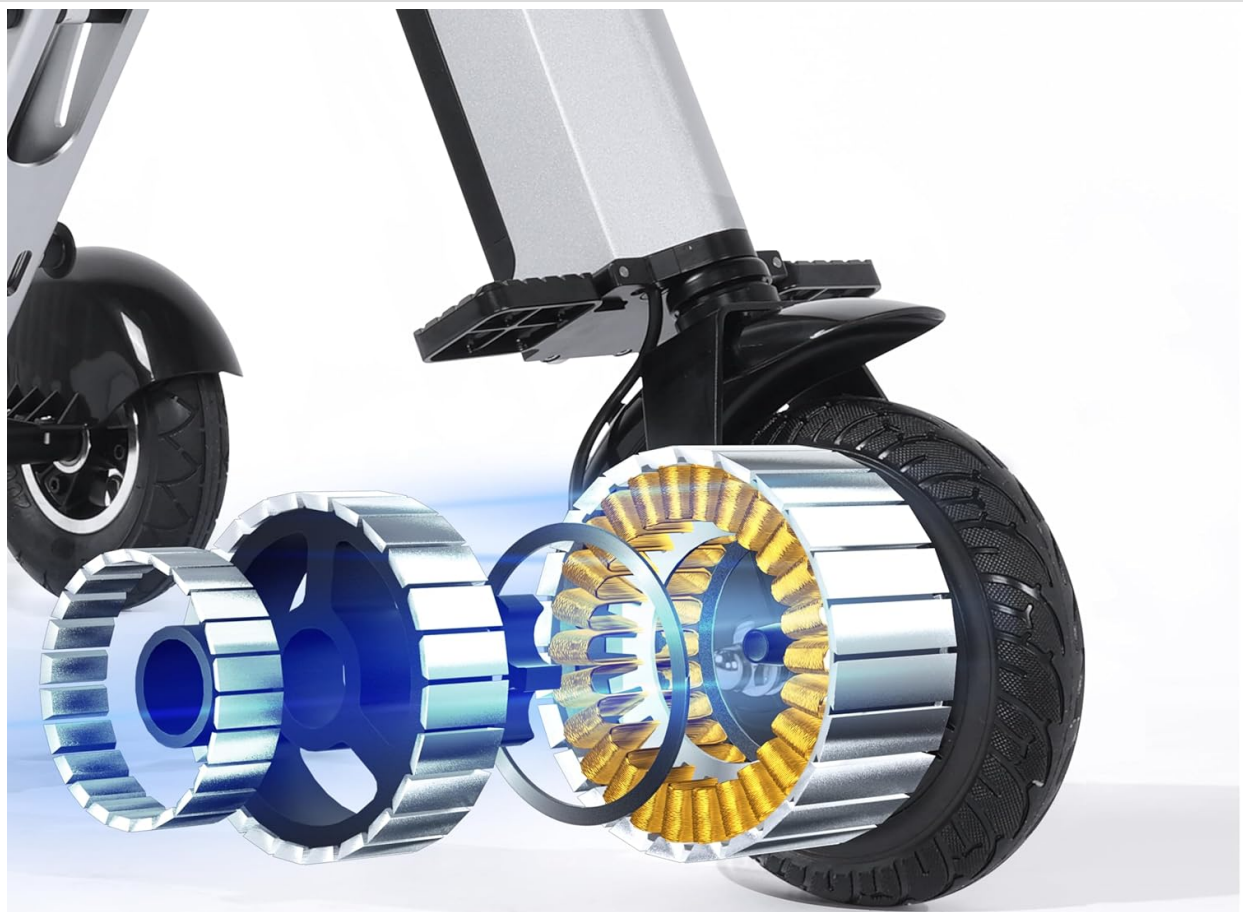
9. SPECIFICATIONS

The following table outlines the key specifications for the TopMate ES33 Powered Scooter:

Feature	Specification
Brand	TopMate
Model Name	ES33
Color	Gray
Age Range (Description)	Adult
Special Feature	Foldable
Weight Limit	100 Kilograms (220.5 lbs)
Scooter Weight	16.1 Kilograms (35.4 lbs)
Number of Wheels	3
Wheel Material	Rubber
Frame Material	Aluminum
Handlebar Type	T-shaped
Wheel Size	8 Inches (Pneumatic)
Suspension Type	Rigid
Grip Type	Rubber
Brake Style	Front Braking
Motor Power	250W Brushless Motor
Motor Rotating Speed	1300 RPM
Top Speed	15 MPH (24 km/h)
Battery Type	Removable Lithium Battery
Battery Capacity	36V 7.8AH (281Wh)
Maximum Distance Range	15.53 - 18.64 Miles (25-30 km)
Charging Time	Approx. 3.5 hours
Recommended Height	Under 6'2"
Rear Axle Width	15.7 inches (40 cm)



Figure 9.1: A person riding the TopMate ES33 scooter, illustrating its use. Key specifications such as scooter weight (16.1kg / 35.4lb), load capacity (100kg / 220.4lb), and recommended height (under 6'2") are overlaid.



250W
Brushless motor

1300RPM
Rotating speed

15MPH
Top Speed

Figure 9.2: Diagram illustrating the internal components of the 250W brushless motor, highlighting its 1300 RPM rotating speed and 15 MPH top speed capability.



Figure 9.3: Detailed dimensional drawing of the TopMate ES33 scooter, showing its height (35.8in / 91cm), length (33.6in / 85.5cm), wheel size (8in), and rear axle width (15.7in / 40cm).

10. WARRANTY AND SUPPORT

10.1 Warranty Service

The TopMate ES33 Powered Scooter comes with a **2-year limited warranty service**. This warranty covers manufacturing defects and ensures peace of mind regarding the product's quality and performance. Please retain your proof of purchase for warranty claims.

10.2 Customer Support

For technical assistance, warranty claims, or any questions regarding your TopMate ES33 scooter, please contact TopMate customer support through their official website or the retailer where the product was purchased.