

[Manuals.plus](#) /

> [vivo](#) /

> VIVO X200 FE 5G Smartphone User Manual

vivo X200 FE

VIVO X200 FE 5G Smartphone User Manual

Model: X200 FE

INTRODUCTION

This manual provides essential information for the safe and efficient use of your VIVO X200 FE 5G smartphone. Please read it thoroughly before operating your device. The VIVO X200 FE 5G is a high-performance smartphone featuring advanced camera capabilities, a vibrant AMOLED display, and a powerful processor.



Image: Front and rear view of the VIVO X200 FE 5G in Amber Yellow, showcasing its sleek design and camera module.

SETUP

1. Unboxing and Initial Check

Upon opening the package, ensure all components are present:

- VIVO X200 FE 5G Smartphone
- Power Adapter
- USB Cable
- SIM Tray Ejector
- Phone Case

2. Inserting the SIM Card

1. Locate the SIM card tray on the side of the device.
2. Insert the SIM tray ejector tool into the small hole next to the tray and press gently until the tray pops out.

3. Place your Nano-SIM card(s) into the tray with the gold contacts facing down. Ensure proper orientation.
4. Carefully reinsert the tray into the phone.

3. Powering On Your Device

Press and hold the Power button (usually on the right side) until the VIVO logo appears. Follow the on-screen instructions to complete the initial setup, including language selection, Wi-Fi connection, and Google account setup.

4. Charging the Battery

Connect the USB cable to the power adapter and then to the phone's charging port. Plug the adapter into a power outlet. The device supports 90W fast charging.

OPERATING YOUR VIVO X200 FE 5G

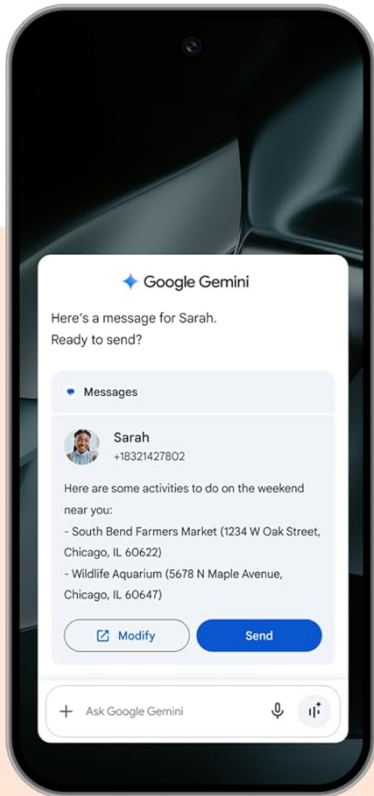
Display and User Interface

The VIVO X200 FE 5G features a 6.31-inch AMOLED display with 1.5K resolution and up to 5000 Nits brightness, offering a clear and immersive viewing experience. It operates on Funtouch OS 15.

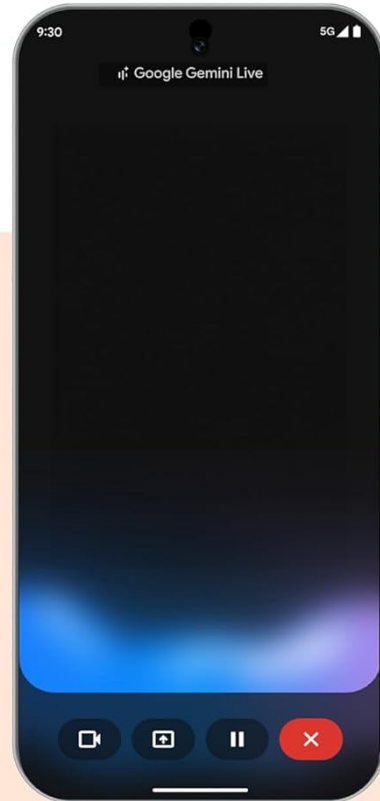
X200 FE

with  Google Gemini

Gemini Overlay*



Google Gemini Live**



*Check responses. Setup required. Compatibility and availability varies. Google and Gemini are trademarks of Google LLC
**Check responses. Compatibility and availability varies. 18+. Google and Gemini are trademarks of Google LLC

Image: The VIVO X200 FE 5G display highlighting its 5000 Nits brightness and 1.5K resolution for a vivid visual experience.

Camera Features

The device is equipped with a ZEISS professional imaging system.

- **Main Camera:** 50MP ZEISS Main Camera with up to 100x Zoom, 3x Optical Zoom, Sony IMX882 Ultra-Sensitive Sensor, f/2.65 aperture.
- **Ultra Sensing Camera:** 50MP with Sony IMX921 VCS Bionic Sensor, f/1.88, Optical Image Stabilization (OIS).
- **Ultra Wide-Angle Camera:** 8MP with ultra field of view.
- **Front Camera:** 50MP AF, f/2.0.
- **Rear Aura Light:** Smart 3D fill light with intelligent color temperature adjustment (1800–5200K).

ZEISS Professional Imaging

Unlock your Creativity

50MP* ZEISS Main Camera

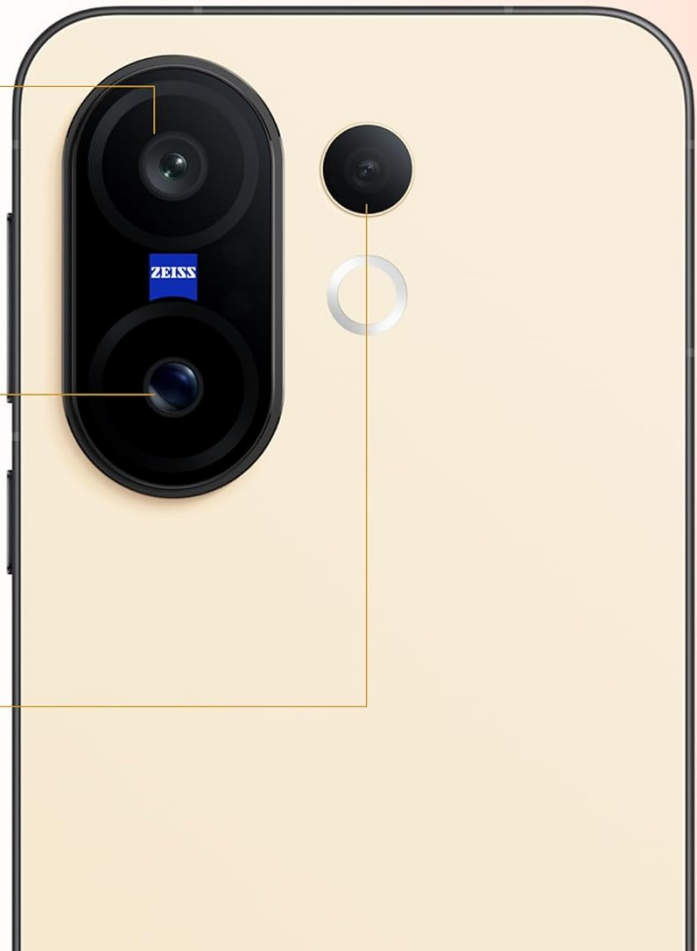
Sony IMX921
VCS Bionic Sensor f/4.7cm (1.9")
OIS Camera

50MP* ZEISS Telephoto Camera

Sony IMX882 Ultra-Sensitive Sensor

8MP* Ultra Wide-Angle Camera

120° of FOV



*Pixel value may vary under different camera models and is subject to actual usage.

Image: Close-up of the VIVO X200 FE 5G camera module, highlighting the 50MP ZEISS Main Camera, 50MP ZEISS Telephoto Camera, and 8MP Ultra Wide-Angle Camera.

ZEISS Multifocal Portrait



Landscape Portrait

23 mm

ZEISS Distagon Style Bokeh



Street Portrait

35 mm

ZEISS B-Speed Style Bokeh



Classic Portrait

50 mm

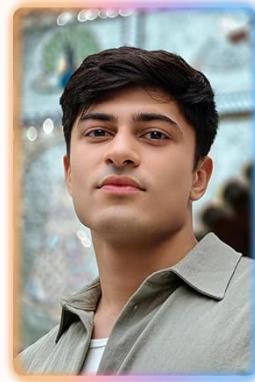
ZEISS Biotar Style Bokeh



Figure Portrait

85 mm

ZEISS Sonnar Style Bokeh



Close-up Portrait

100 mm

ZEISS Planar Style Bokeh

Image: Examples of ZEISS Multifocal Portrait modes on the VIVO X200 FE 5G, including Landscape, Street, Classic, Figure, and Close-up portraits with various bokeh styles.

Performance and Operating System

The VIVO X200 FE 5G is powered by the MediaTek Dimensity 9300+ processor, ensuring smooth performance. It features a super-large 3800 mm² VC heat dissipation area for thermal management. The device runs on Funtouch OS 15.

Street Photography Mode



6500mAh



90W Flashcharge

ZEISS Master Color Display

5000nits



Stage Portrait Video

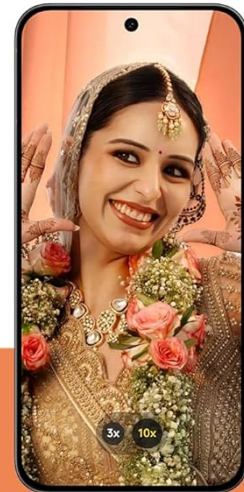


Image: Visual representation of the MediaTek Dimensity 9300+ processor and key features of Funtouch OS 15, including Circle to Search, AI Screen Translation, and Smart Call Assistant.

Security Features

The device includes an in-display optical fingerprint sensor for secure unlocking and authentication.

Connectivity

The VIVO X200 FE 5G supports Bluetooth, USB, Wi-Fi, and GPS connectivity.

MAINTENANCE

Battery Care

- Avoid exposing the device to extreme temperatures.
- Use only the provided charger and cable for optimal charging and battery longevity.
- Do not leave the device charging for extended periods after it reaches 100%.

Cleaning Your Device

- Use a soft, lint-free cloth to clean the screen and body.
- Avoid using harsh chemicals or abrasive materials.
- The device has IP68 and IP69 dust and water resistance, but it is not waterproof. Avoid intentional submersion.

Ultimate Performance Engine

5G

MediaTek Dimensity 9300+

IP68 & IP69 Dust & Water Resistance*

Military-Grade Drop Resistance*

SGS Triple Protection Certification

Military-Grade Drop Resistance

Funtouch OS 15

Circle to Search* AI Screen Translation* Smart Call Assistant*

**This product has been tested under controlled laboratory conditions and is rated as IP68 and IP69 under IEC standard 60529:2011 which provides protection against dust tight, effect of continuous immersion in water & high pressure and temperature water jets. IP68 & IP69 water resistance test conditions: Submerged in static fresh water up to 1.5 meters for up to 30 minutes. For more details on test aspects, kindly visit www.vivo.com.cn.

**This product was tested under controlled laboratory conditions. Since the phone contains precision components, please make sure not to bump or drop the phone while using it. Any artificially caused damage to the device will not be covered by the warranty. vivo T4x 5G has passed 3 environmental tests under the U.S. military standard MIL-STD-883C. These include high temperature, low temperature, water resistance, dust resistance and shock tests. All results are for more details on test aspects, kindly visit: www.vivo.com.cn subject to actual experience.

*Requires a network connection, vivo disclaims all warranty for accuracy and shall not be responsible for the results and results may vary based on individual experience and usage.

Image: The VIVO X200 FE 5G being splashed with water, illustrating its IP68 and IP69 dust and water resistance ratings.

Software Updates

Regularly check for and install software updates to ensure optimal performance, security, and access to new features.

TROUBLESHOOTING

Common Issues and Solutions

Issue	Possible Solution
Device not powering on	Ensure the battery is charged. Press and hold the Power button for at least 10 seconds.
Apps crashing or freezing	Close and reopen the app. Clear the app's cache. Restart the device.
Poor network signal	Check SIM card insertion. Move to an area with better coverage. Restart the device.
Battery draining quickly	Adjust screen brightness. Close background apps. Check for power-intensive apps.
Fingerprint sensor not working	Ensure your finger is clean and dry. Re-register your fingerprint.

If issues persist, consider performing a factory reset (back up your data first) or contact customer support.

SPECIFICATIONS

Feature	Detail
Model Number	X200 FE
Operating System	Funtouch OS 15
RAM	16 GB (as per current variant)
Internal Storage	512 GB (as per current variant)
Processor	MediaTek Dimensity 9300+
Display Size	6.31 inches (16.04cm) AMOLED
Resolution	1.5K
Main Camera	50MP ZEISS Main Camera, 50MP Ultra Sensing Camera, 8MP Ultra Wide-Angle Camera
Front Camera	50MP AF
Battery Capacity	6500mAh
Charging	90W Fast Charging
Connectivity	Bluetooth, USB, Wi-Fi, GPS
Dimensions	15.1 x 7.2 x 0.8 cm
Weight	186 g
Water & Dust Resistance	IP68 & IP69
Security	In-display optical fingerprint sensor

WARRANTY AND SUPPORT

Warranty Information

Your VIVO X200 FE 5G smartphone comes with a standard manufacturer's warranty. Please refer to the warranty card included in your product packaging for specific terms, conditions, and duration. Keep your proof of purchase for warranty claims.

Customer Support

For technical assistance, service, or further inquiries, please contact VIVO customer support.

- **Manufacturer:** vivo Mobile India Pvt Ltd
- **Address:** Plot No 08, Sector 24, Yamuna Expressway Area, Gautam Buddha Nagar, Uttar Pradesh, 201310, India
- Visit the official VIVO website for contact details and support resources.