

MARBERO M188SL60

MARBERO M188SL60 Solar Generator 296Wh with 60W Solar Panels

Portable Power Station User Manual

1. INTRODUCTION

Thank you for choosing the MARBERO M188SL60 Portable Power Station. This device is designed to provide reliable and versatile power for various applications, including outdoor adventures, RV travel, and emergency home backup. This manual provides essential information for the safe and efficient operation, maintenance, and troubleshooting of your solar generator.



Figure 1: MARBERO M188SL60 Portable Power Station in use with a solar panel.

2. PRODUCT OVERVIEW

The MARBERO M188SL60 is a compact and robust solar generator featuring a 296Wh capacity and 300W pure sine wave AC output. It comes with a 60W foldable solar panel for convenient recharging. Its design prioritizes portability and durability for both indoor and outdoor use.

Key Features:

- **Lightweight & Portable:** Weighs 5.73 lbs (power station) and 3.08 lbs (solar panel), with a slim design for easy transport.
- **Multiple Charging Options:** Supports recharging via 60W solar panel, 19V DC adapter, or car charger.
- **Long Battery Life:** 296Wh Li-ion battery with 300W pure sine wave AC output, maintaining 90% capacity after 1000 cycles.
- **Durable Construction:** Rugged, impact-resistant shell and IP65 waterproof rated solar panel.
- **Simultaneous Device Charging:** Equipped with 8 output ports: 1*USB-C PD18W, 2*USB-A 18W QC3.0,

1*USB-A 15W QC3.0, 2*12V DC, and 2*110V AC outlets.

- **Built-in LED Flashlight:** Features Normal Light, Strobe, and SOS modes for enhanced safety.

What's Included:

- 1 x MARBERO M188SL60 Portable Power Station
- 1 x MARBERO 60W Foldable Solar Panel
- 1 x Power Adapter
- 1 x Cigarette Lighter Adapter
- 1 x User Manual



Figure 2: Package contents of the MARBERO M188SL60 Solar Generator.

3. SETUP

Before initial use, fully charge your MARBERO M188SL60 Portable Power Station. This ensures optimal battery performance and readiness for use.

Initial Charging:

1. Connect the provided Power Adapter to the DC input port on the power station.
2. Plug the Power Adapter into a standard wall outlet (AC 110V).
3. The battery indicator on the power station will illuminate, showing the charging progress. The unit is fully charged when all indicator lights are solid.
4. A full charge using the AC adapter typically takes approximately 7 hours.

Solar Panel Connection:

To charge using the 60W solar panel:

1. Unfold the MARBERO 60W Solar Panel and place it in direct sunlight.
2. Connect the solar panel's output cable to the DC input port on the power station.
3. Ensure a secure connection. The power station will begin charging, indicated by the battery lights.

3 Recharging Options



Wall Outlet



Solar Panel



Car Socket

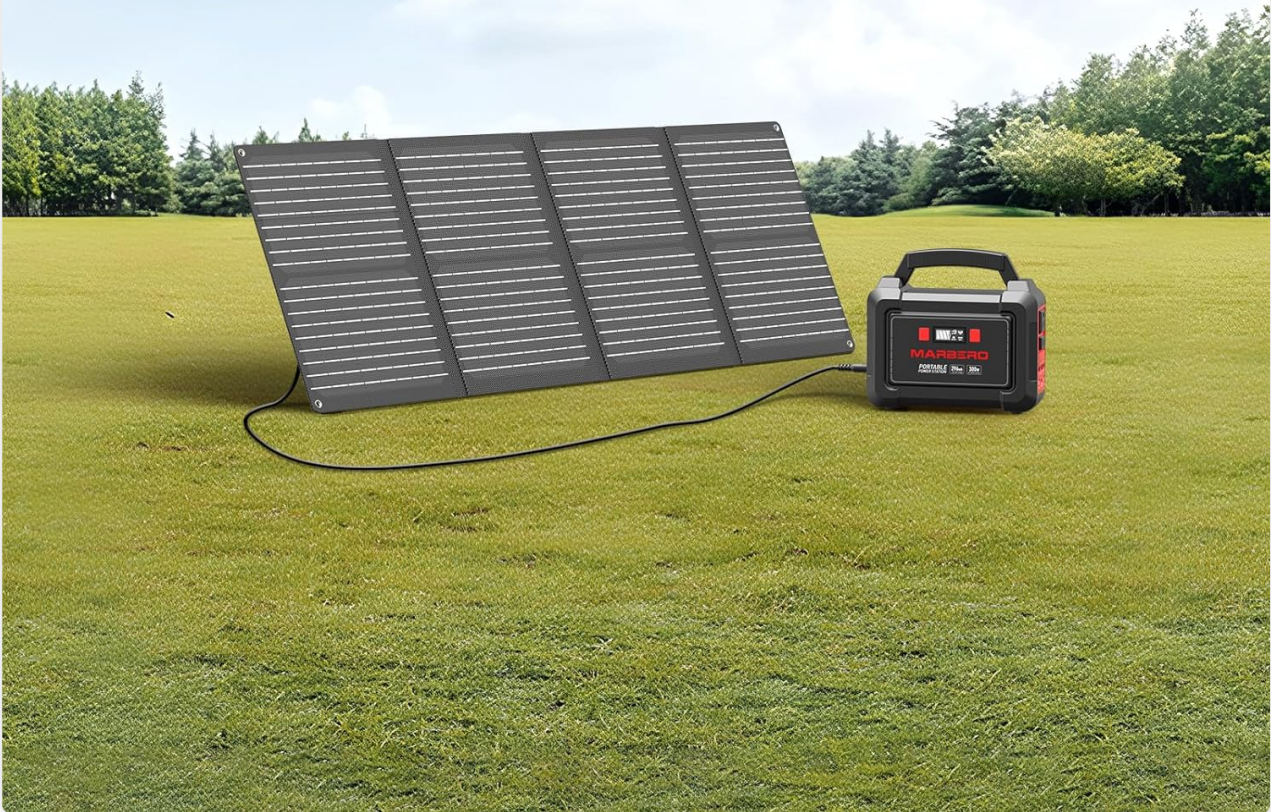


Figure 3: Illustration of the three available recharging methods.

4. OPERATING INSTRUCTIONS

Powering On/Off:

- To turn on the power station, press and hold the main power button until the display illuminates.
- To turn off, press and hold the main power button again until the display turns off.

Using Output Ports:

The power station features various output ports for different devices:

- **AC Outlets (2x 110V):** Press the AC button to activate. Plug in small appliances up to 300W.
- **USB-A Ports (3x):** Automatically activate when a device is connected. Supports 18W QC3.0 and 15W QC3.0.
- **USB-C Port (1x):** Automatically activates when a device is connected. Supports 18W PD fast charging.

- **DC Ports (2x 12V):** Press the DC button to activate. Ideal for car coolers or LED strips.

You can charge up to 8 devices simultaneously. The power station is designed to provide stable, clean power (pure sine wave AC output) for sensitive electronics.



Figure 4: Charging multiple devices with the power station.

Using the LED Flashlight:

The built-in LED flashlight offers three lighting modes:

1. Press the flashlight button once for Normal Light.
2. Press again for Strobe mode.
3. Press a third time for SOS mode.
4. Press a fourth time to turn off the flashlight.

Built-in Flashlight with 3 Lighting Modes

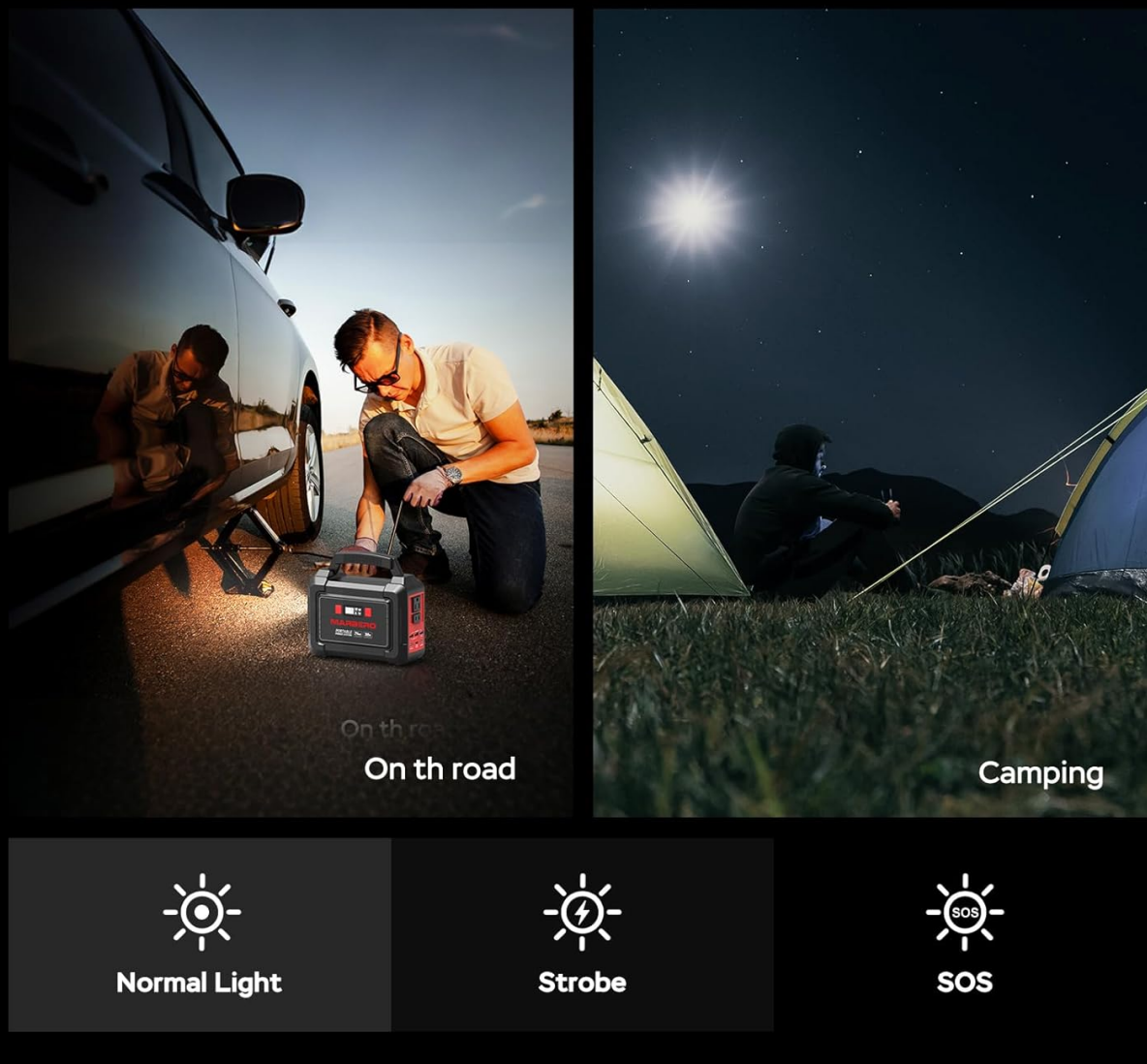


Figure 5: The power station's built-in flashlight with multiple modes.

5. CHARGING OPTIONS

The MARBERO M188SL60 offers flexible charging methods to ensure you always have power:

- **Wall Outlet (AC Adapter):** Use the included 19V DC adapter for a full charge in approximately 7 hours.
- **Solar Panel:** Connect the 60W foldable solar panel for eco-friendly charging. The IP65 waterproof rating allows for safe use in light rain.
- **Car Charger:** Utilize the included Cigarette Lighter Adapter to charge the power station from your vehicle's 12V outlet, ideal for road trips.

6. SAFETY INFORMATION

To ensure safe operation and prolong the lifespan of your power station, please observe the following:

- Do not expose the device to extreme temperatures or direct heat sources.
- Avoid dropping or subjecting the unit to severe impacts.
- Keep the power station and solar panel away from water, except for the IP65 rated solar panel in light rain.
- Do not disassemble, repair, or modify the unit yourself. Contact customer service for assistance.
- Ensure proper ventilation during use and charging to prevent overheating.
- The built-in Battery Management System (BMS) protects against overcharging, overheating, and short circuits.

7. MAINTENANCE

Regular maintenance helps ensure the longevity and optimal performance of your power station:

- Store the power station in a cool, dry place away from direct sunlight when not in use.
- Recharge the unit every 3-6 months if stored for extended periods to maintain battery health.
- Clean the exterior with a soft, dry cloth. Do not use abrasive cleaners or solvents.
- Keep all ports free from dust and debris.

8. TROUBLESHOOTING

If you encounter issues with your MARBERO M188SL60, refer to the following common solutions:

- **Device not charging:** Ensure the power station is turned on and has sufficient battery charge. Check all cable connections for tightness. Verify the device being charged is compatible with the port's output specifications.
- **Power station not charging:** Confirm the charging adapter or solar panel is correctly connected and receiving power (e.g., solar panel in direct sunlight). Check for any damage to cables or ports.
- **AC output not working:** Ensure the AC button is pressed to activate the AC outlets. Check if the appliance's wattage exceeds the 300W limit.
- **Flashlight not working:** Press the flashlight button multiple times to cycle through modes or turn it on.

For persistent issues, please contact MARBERO customer service.

9. SPECIFICATIONS

Feature	Detail
Brand	MARBERO

Model Name	M188SL60
Battery Capacity	296Wh (Lithium Ion)
AC Output	300W (Pure Sine Wave), 110V
Solar Panel	60W Foldable, IP65 Waterproof
USB-C Output	1x PD18W
USB-A Output	2x QC3.0 18W, 1x QC3.0 15W
DC Output	2x 12V
Recharge Time (AC Adapter)	Approx. 7 hours
Power Station Weight	5.73 lbs
Solar Panel Weight	3.08 lbs
Product Dimensions	4.01"L x 8.38"W x 9.09"H
Material	ABS

10. WARRANTY AND SUPPORT

MARBERO offers a **12-month warranty** for the M188SL60 Portable Power Station. For any product-related inquiries, technical support, or warranty claims, please contact MARBERO customer service. Our team is available **7 days a week, 24 hours a day**, to assist you. You can reach us via Amazon's message system.