

LIGE CC-DM4-C

LIGE GPS Smartwatch DM4 User Manual

Model: CC-DM4-C

1. INTRODUCTION

This manual provides detailed instructions for the LIGE GPS Smartwatch DM4. Please read this manual thoroughly before using your device to ensure proper operation and to maximize its features. Keep this manual for future reference.

2. WHAT'S IN THE BOX

- 1 X Silver Smartwatch
- 1 X Brown Leather Strap
- 1 X Grey Silicone Strap
- 1 X Charging Cable
- 1 X User Manual

3. SETUP

3.1 App Installation

To unlock the full potential of your LIGE GPS Smartwatch DM4, download and install the **GloryFitPro** application on your smartphone. The app is compatible with Android 5.0+ and iOS 11+ devices.

1. Scan the QR code provided in the watch's quick start guide or search for "GloryFitPro" in your smartphone's app store (App Store for iOS, Google Play for Android).
2. Download and install the application.
3. Follow the on-screen prompts to create an account or log in.



Image: Step-by-step guide for installing the GloryFitPro app on a smartphone.

3.2 Device Pairing

After installing the app, pair your smartwatch with your smartphone via Bluetooth:

1. Ensure Bluetooth is enabled on your smartphone.
2. Open the GloryFitPro app and navigate to the "Device" section.
3. Tap "Add a new device" and select your LIGE DM4 smartwatch from the list (e.g., "DM4-361").
4. Confirm the pairing request on both your smartwatch and smartphone.
5. Allow necessary permissions for notifications and data synchronization.

Video: Demonstrates the process of connecting the LIGE DM4 smartwatch to the GloryFitPro application.

4. OPERATING THE SMARTWATCH

4.1 AMOLED HD Display

The LIGE DM4 features a 1.43-inch AMOLED HD display with a 466x466 resolution. This high-definition screen provides clear visibility even in direct sunlight and offers vibrant colors with a smooth, precise touch response.



Image: Highlights the 1.43-inch AMOLED HD screen with its high resolution and color accuracy.

4.2 GPS and Satellite Positioning

The smartwatch integrates an L1 positioning chip and receives signals from six satellite systems (GPS, Beidou, GLONASS, Galileo, QZSS, and NAVIC). Combined with AGPS technology, this ensures fast and precise outdoor

positioning, ideal for tracking professional sports activities like hiking and trail running.

20 Cadrons D'écran Éteint en Ligne

Style d'affichage toujours actif personnalisable avec plusieurs options de cadrans, vous permettant de changer de style librement.



REMARQUE : afin de prolonger la durée de vie de la batterie, la montre peut désactiver la fonction "lever pour réveiller" afin de réduire la consommation d'énergie inutile lorsque la fonction AOD est activée.



Image: Illustrates the smartwatch's multi-satellite GPS positioning capabilities for outdoor activities.

Video: Shows the GPS tracking function of the LIGE DM4 smartwatch during outdoor activities.

4.3 Sports Modes and Intelligent Recognition

The LIGE DM4 supports 178 diverse sports modes, including running, cycling, swimming, skiing, surfing, and more. It also features automatic recognition for 5 daily activities: walking, running, cycling, elliptical, and rowing. Professional sports data is provided to help improve training quality.

Batterie 530 mAh, longue durée

La lampe de poche LED, avec un éclairage de haute luminosité, est indispensable pour les situations d'urgence, les signaux de détresse, etc. lors des activités de plein air.



530 mAh



Temps d'attente	Temps de charge	Jours de travail
45 Jours	2.5 Heures	5-7 Jours

Image: Displays various sports modes available on the LIGE DM4 smartwatch, including running, cycling, and swimming.

Video: Demonstrates selecting and starting various sports modes on the LIGE DM4 smartwatch.

4.4 Compass, Altimeter, and Barometer

The outdoor smartwatch features an integrated professional SPL07-03 pressure sensor for real-time monitoring of altitude and atmospheric pressure changes. A high-sensitivity magnetic sensor provides an accurate 3D electronic compass, enabling quick orientation in complex terrains, crucial for outdoor exploration.

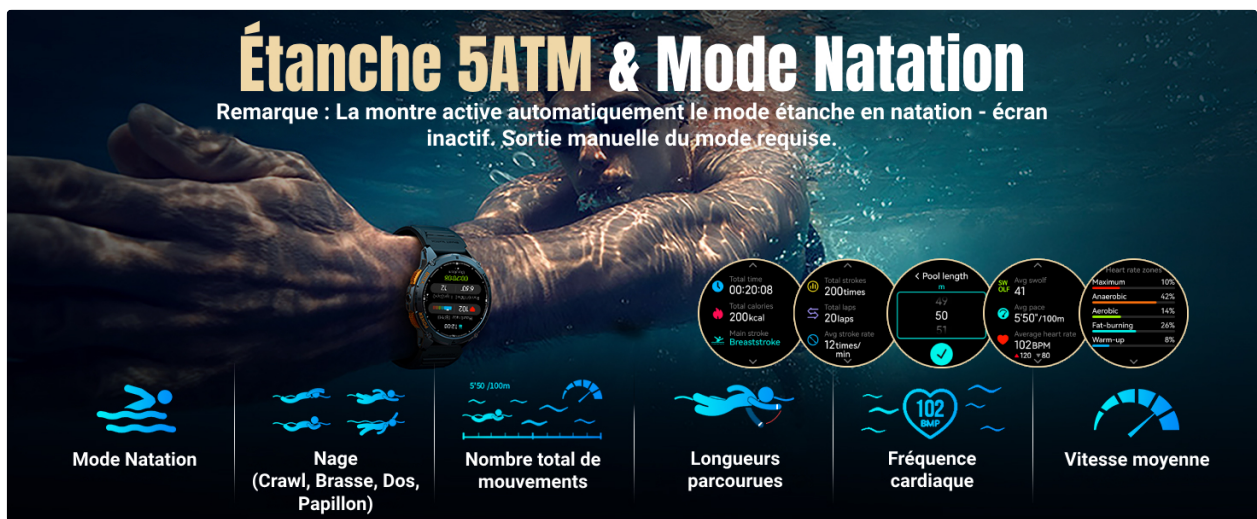


Image: Shows the compass, altimeter, and barometric pressure features on the smartwatch display, useful for outdoor adventures.

Video: Illustrates the compass calibration and functionality of the LIGE DM4 smartwatch.

4.5 Water Resistance and Swimming Recognition

The sports watch is 5ATM water-resistant (up to 50 meters deep). In swimming mode, it accurately recognizes 4 strokes: freestyle, breaststroke, backstroke, and butterfly, simultaneously recording stroke count, SWOLF efficiency, and average pace, suitable for both pool and open water environments.



Image: Details the 5ATM water resistance and various swimming metrics tracked by the smartwatch.

Video: Demonstrates the water resistance and durability of the LIGE DM4 smartwatch.

4.6 Bluetooth Calling and Notifications

The LIGE DM4 supports Bluetooth calls (make, receive, reject), allowing you to manage calls directly from your wrist without needing to take out your phone. You can synchronize up to 100 contacts and receive notifications from various applications like Facebook, Instagram, and WhatsApp.

Video: Shows the Bluetooth calling feature and notification display on the LIGE DM4 smartwatch.

4.7 Watch Faces and Customization

The smartwatch includes 10 local watch faces and 6 Always-On Display (AOD) faces, supporting 4 groups of custom designs. Through the GloryFitPro app, you can download over 300 watch faces of various styles. You can also use your favorite photos as watch faces.

Lampe de poche LED puissante

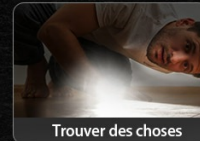
*Remarque : Ne dirigez pas la lumière vers les yeux.



Activité nocturne en plein air



Panne de courant



Trouver des choses



Mode haute luminosité



Mode flash



Mode SOS

Image: Illustrates the wide variety of watch faces available and the option to customize with personal photos.

Video: Demonstrates how to customize watch faces and select from various designs within the app.

4.8 LED Flashlight

The smartwatch includes a practical LED flashlight feature, useful for outdoor activities at night, during power outages, or when searching for items in low light conditions.



Image: Shows the integrated LED flashlight and its various uses in different scenarios.

Video: Demonstrates activating and using the LED flashlight feature on the LIGE DM4 smartwatch.

4.9 Health Management

The LIGE DM4 supports comprehensive health tracking, including heart rate monitoring, blood oxygen analysis, and sleep quality assessment. It also offers features like alarm, stopwatch, and camera remote control. **Note: Health data is for reference only and should not be used for medical diagnosis.**

Video: Highlights the 24/7 health monitoring features of the LIGE DM4, including heart rate, blood oxygen, and stress tracking.

5. MAINTENANCE

5.1 Battery Life and Charging

The 530 mAh high-performance battery offers 7 to 10 days of typical use, approximately 4 days with Always-On Display, about 24 hours in GPS mode, and up to 60 days in standby mode. A full charge takes approximately 3 hours.



Image: Details the 530 mAh battery capacity and expected usage times for the smartwatch.

5.2 Durability and Materials

The watch case is made of high-strength zinc alloy, providing corrosion resistance and a metallic finish, combined with scratch-resistant tempered glass. It comes with two 22mm straps: a breathable, sweat-resistant silicone sports strap and a professional-style magnetic leather strap.

6. TROUBLESHOOTING

6.1 Connectivity Issues

- **Watch not connecting to app:** Ensure Bluetooth is on, the app has necessary permissions, and the watch is charged. Try restarting both the watch and your phone.
- **Notifications not appearing:** Check app notification settings on your phone and within the GloryFitPro app. Ensure the app is running in the background.

6.2 GPS Accuracy

- **Inaccurate GPS:** Ensure you are in an open area with a clear view of the sky. Initial GPS lock may take longer.

6.3 Screen Responsiveness

- **Unresponsive screen:** Ensure the screen is clean and dry. If the issue persists, try restarting the watch.

7. SPECIFICATIONS

Feature	Detail
Brand	LIGE
Model Number	CC-DM4-C
Display	1.43-inch AMOLED HD (466x466)
Operating System	Android 5.0+ & iOS 11+
Connectivity	Bluetooth
GPS	Integrated GPS (6 satellite systems)
Water Resistance	5ATM (up to 50m)





Battery Capacity	530 mAh Lithium-polymer
Typical Usage Battery Life	7-10 days
Standby Time	Up to 60 days
Charging Time	Approx. 3 hours
Special Features	Phone calls, GPS, Alarm, Always-On Display, Multi-sport Tracker, Compass, Altimeter, Barometer, LED Flashlight

8. WARRANTY AND SUPPORT

The LIGE GPS Smartwatch DM4 comes with a **2-year manufacturer's warranty**. For technical support or warranty claims, please refer to the contact information provided with your purchase or visit the official LIGE website.

© 2025 LIGE. All rights reserved.

Related Documents - CC-DM4-C

	<p>LIGE GPS Smartwatch: GloryFitPro App Installation and User Guide</p> <p>A comprehensive guide for LIGE GPS Smartwatches, detailing the download, installation, and usage of the GloryFitPro app. Learn how to register, log in, bind your device, and configure watch settings, along with important GPS notes and FCC compliance information.</p>
	<p>LIGE Smart Watch User Manual and Guide</p> <p>Official user manual for the LIGE Smart Watch, providing instructions on setup, features, health tracking, fitness modes, and connectivity for Android and iOS devices.</p>
	<p>LIGE Sports Smart Watch User Manual</p> <p>User manual for the LIGE Sports Smart Watch, detailing setup, pairing with the FitCloudPro app, watch functions like step counting, heart rate monitoring, sleep tracking, weather, music control, and message notifications. Includes app features such as data synchronization and customizable watch faces.</p>
	<p>LIGE Kids Calling Smartwatch User Manual: Features, Setup, and Operation</p> <p>Comprehensive user guide for the LIGE 2024 Kids Calling Smartwatch. Learn how to set up, connect, and use features like calling, games, and activity tracking on your child's smartwatch. Compatible with iOS and Android.</p>



[LIGE GPS Smart Watch User Manual](#)

Comprehensive user manual for LIGE GPS Smart Watches, detailing features like fitness tracking, Bluetooth calls, GPS navigation, compass, and long battery life. Compatible with Xiaomi and Huawei devices.



[LIGE Men's Smart Watch 189 \(19\) - User Manual & Features](#)

Comprehensive user guide for the LIGE Men's Luxury Smart Watch 189 (19). Covers features like full circle touch screen, Bluetooth calls, waterproof design, fitness tracking, and compatibility with Android/iOS.