

## Amazon Echo Show 8 (3rd Generation)

# Simplified Amazon Echo Show 8 (3rd Generation) User Manual

Your comprehensive guide to getting started and mastering your smart display.

## INTRODUCTION

This manual provides comprehensive, easy-to-understand instructions for your Amazon Echo Show 8 (3rd Generation). It is designed to help users, especially beginners, confidently navigate and utilize all features of their smart display without technical jargon. From initial setup to advanced functionalities, this guide ensures you get the most out of your device.

## PRODUCT OVERVIEW

The Amazon Echo Show 8 (3rd Generation) is a smart display device that integrates Alexa voice services with a visual interface. It allows for hands-free control of music, video calls, smart home devices, and provides visual information like weather forecasts and news.

# VEREINFACHT AMAZON ECHO SHOW 8 (3. GENERATION) BENUTZERHANDBUCH

Schritt-für-Schritt-Anleitung für Anfänger und Senioren  
mit Alexa-Tipps und Tricks zum Erlernen, Bedienen oder  
Beherrschen der Funktionen Ihres brandneuen Geräts



## MAXWELL HARTMANN

*Image: Cover of the instruction manual book. Please note that actual product images of the Amazon Echo Show 8 (3rd Generation) device would typically be placed here to illustrate the device and its components. The provided images are of the instruction manual book itself.*

### SETUP

Follow these steps for the initial setup of your Amazon Echo Show 8 (3rd Generation).

1. **Unboxing and Power Connection:** Carefully remove your Echo Show 8 from its packaging. Connect the

power adapter to the device and then to a wall outlet. The device will automatically power on.

2. **Initial Device Setup:** Follow the on-screen prompts to select your language and connect to your Wi-Fi network. You will need your Wi-Fi network name (SSID) and password.
3. **Amazon Account Login:** Log in with your Amazon account credentials. If you don't have one, you will be prompted to create one.
4. **Alexa Settings:** Customize your Alexa settings, including your time zone, preferred voice, and any initial preferences.

## OPERATING INSTRUCTIONS

---

### Voice Commands

The Echo Show 8 is primarily controlled using your voice with Alexa. Simply say "Alexa," followed by your command.

- **Everyday Tasks:** "Alexa, what's the weather today?" "Alexa, set a timer for 10 minutes." "Alexa, add milk to my shopping list."
- **Entertainment:** "Alexa, play music by [artist]." "Alexa, show me movie trailers." "Alexa, play the news."
- **Reminders and Alarms:** "Alexa, remind me to call Mom at 3 PM." "Alexa, set an alarm for 7 AM."

### Communication

Use your Echo Show 8 for hands-free communication.

- **Video Calls:** "Alexa, call [contact name]." You can make video calls to other Echo Show devices or the Alexa app.
- **Messaging:** "Alexa, send a message to [contact name]."
- **Announcements:** "Alexa, announce 'Dinner is ready'" to all compatible Echo devices in your home.

### Smart Home Control

Connect and manage compatible smart home devices directly from your Echo Show 8.

- **Connecting Devices:** "Alexa, discover my devices." Follow the on-screen instructions to pair smart lights, thermostats, and other devices.
- **Controlling Devices:** "Alexa, turn on the living room lights." "Alexa, set the thermostat to 72 degrees."

### Personalized Routines

Automate daily tasks by creating custom routines.

- **Creating Routines:** In the Alexa app, navigate to 'Routines' and set triggers (e.g., 'Good Morning') and actions (e.g., turn on lights, play news, give weather).

### Privacy and Security

Manage your privacy settings and utilize security features.

- **Alexa Guard:** Enable Alexa Guard to detect sounds like glass breaking or smoke alarms when you're away.
- **Privacy Controls:** Access settings to review and delete voice recordings, manage camera and microphone access, and control data usage.

## MAINTENANCE

---

To ensure optimal performance and longevity of your Echo Show 8, follow these maintenance guidelines.

- **Cleaning:** Gently wipe the screen and device exterior with a soft, lint-free cloth. Do not use abrasive cleaners or sprays directly on the device.
- **Software Updates:** Your device will automatically receive software updates. Ensure it is connected to Wi-Fi and powered on regularly.

### TROUBLESHOOTING

This section addresses common issues you might encounter with your Echo Show 8.

- **Device Not Responding:** Try saying "Alexa" again clearly. If unresponsive, unplug the device for 30 seconds and plug it back in.
- **Wi-Fi Connection Issues:** Check your router and internet connection. Restart your router and then your Echo Show 8. Ensure you have entered the correct Wi-Fi password.
- **Voice Commands Not Understood:** Speak clearly and at a normal pace. Ensure there is no background noise. Check your device's microphone settings.
- **Screen Issues:** If the screen is frozen or not displaying correctly, try restarting the device.

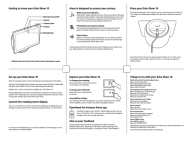
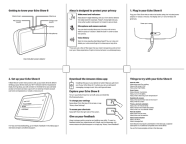
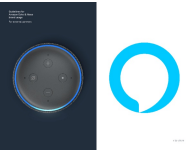
### SPECIFICATIONS



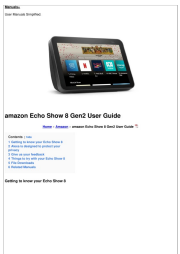
This section would typically list the technical specifications of the Amazon Echo Show 8 (3rd Generation), such as display size, camera resolution, processor, connectivity, and dimensions. The provided data pertains to the instruction manual book itself, not the device. Please refer to the official Amazon product page for detailed device specifications.

### WARRANTY AND SUPPORT

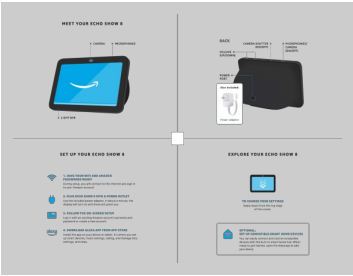
For warranty information and technical support regarding your Amazon Echo Show 8 (3rd Generation), please refer to the official Amazon website or contact Amazon customer service directly. Keep your purchase receipt for any warranty claims.

### Related Documents - Echo Show 8 (3rd Generation)

	<p><a href="#">Echo Show 10 (3rd Gen) Quick Start Guide: Setup, Features, and Usage</a></p> <p>A comprehensive guide to setting up and using your Amazon Echo Show 10 (3rd Generation). Learn about its features, privacy controls, placement, and voice commands.</p>
	<p><a href="#">Amazon Echo Show 8 (2nd Gen) Quick Start Guide: Setup and Features</a></p> <p>Learn how to set up and use your Amazon Echo Show 8 (2nd Generation). This guide covers device features, privacy controls, and essential Alexa commands for daily tasks.</p>
	<p><a href="#">Amazon Echo &amp; Alexa Brand Usage Guidelines for External Partners</a></p> <p>Official guidelines for external partners on the proper usage of Amazon Echo and Alexa brand assets, including logos, typography, colors, and representation in marketing materials. Ensure brand consistency and integrity.</p>

	<p><a href="#">Amazon Echo Show 8 (3rd Gen) Quick Start Guide</a></p> <p>A concise guide to setting up and exploring the features of the Amazon Echo Show 8 (3rd Generation), including privacy controls, voice commands, and smart home integration.</p>
	<p><a href="#">Amazon Echo Show 8 (3rd Gen) Setup and User Guide</a></p> <p>A comprehensive guide to setting up and using your Amazon Echo Show 8 (3rd Generation), including features, privacy controls, and smart home integration.</p>
	<p><a href="#">Amazon Echo Show 8 (2nd Gen) User Guide</a></p> <p>A comprehensive user guide for the Amazon Echo Show 8 (2nd Gen), detailing setup, privacy features, voice commands, and tips for using Alexa.</p>

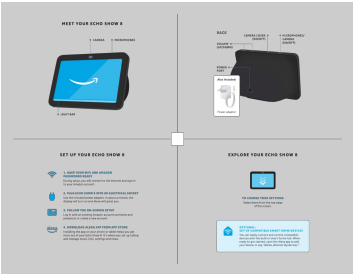
Documents - Amazon – Echo Show 8 (3rd Generation)



[Amazon Echo Show 8 \(3rd Gen\) Quick Start Guide](#)

A concise guide to setting up and exploring the features of the Amazon Echo Show 8 (3rd Generation), including privacy controls, voice commands, and smart home integration.

lang: score:31 filesize: 776 K page\_count: 2 document date: 2024-08-21



[Amazon Echo Show 8 \(3rd Gen\) Quick Start Guide](#)

Learn how to set up and use your Amazon Echo Show 8 (3rd Generation) smart display with this quick start guide. Discover features, privacy controls, and Alexa commands.

lang: score:22 filesize: 806.33 K page\_count: 2 document date: 2023-06-27