



Manuals.plus /

- › OMAC /
- › OMAC Roof Rack Side Rails Instruction Manual for Mazda CX5 (2018-2023), Model G000259

OMAC G000259

OMAC Roof Rack Side Rails Instruction Manual

For Mazda CX5 (2018-2023) - Model G000259

1. INTRODUCTION

This manual provides detailed instructions for the proper installation, operation, and maintenance of your OMAC Roof Rack Side Rails, specifically designed for the Mazda CX5 (2018-2023). Please read these instructions carefully before beginning installation to ensure correct fitment and safe use of the product.



Image 1: OMAC Roof Rack Side Rails (Silver)

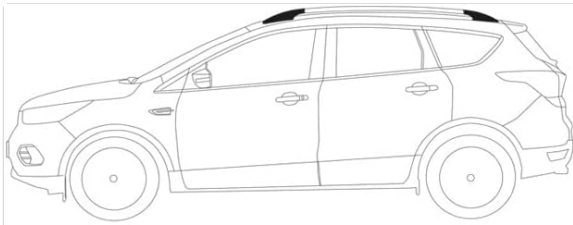
2. SAFETY INFORMATION

- **Maximum Load Capacity:** The maximum load capacity for these roof rack side rails is 75 kg (approximately 165 pounds). Do not exceed this weight limit.
- **Weight Distribution:** Distribute cargo evenly across the roof rack. Secure all items properly to prevent shifting during transit.
- **Regular Checks:** Periodically check all fasteners and mounting points to ensure they remain tight and secure, especially after driving on rough roads or at high speeds.
- **Vehicle Clearance:** Be aware of the increased height of your vehicle with the roof rack and any loaded cargo, especially when entering garages, car washes, or low-clearance areas.
- **Driving Habits:** Adjust your driving speed and style when carrying cargo on the roof rack. Increased wind resistance and a higher center of gravity can affect vehicle handling.
- **Professional Installation:** If you are unsure about any step of the installation process, it is recommended to seek professional assistance.

3. PACKAGE CONTENTS

Before beginning installation, verify that all components listed below and shown in the parts diagram are present and undamaged.

- 2 x Roof Rack Side Rails (Left and Right)
- 4 x Front End Caps (Part A)
- 4 x Rear End Caps (Part B)
- 4 x Rubber Gaskets (Part C)
- 4 x Mounting Brackets (Part D)
- 4 x Mounting Plates (Part E)
- 8 x M6x30 Screws (Part F)
- 8 x M6 Washers (Part G)
- 8 x M6 Nuts (Part H)
- 4 x Rubber Spacers (Part I)
- 4 x Plastic Plugs (Part J)
- 1 x Allen Key (Part K)
- 1 x Drill Bit (Part L)
- 4 x End Cap Covers (Part M)



MONTAJ TALIMATI FITTING INSTRUCTIONS MONTAGEANLEITUNG RIDELLES DE TOIT

TR

*Port bagaj taşıma kapasitesi 75 kg. olup; yüklemeye yapmadan önce aracın tavan taşıma kapasitesinin dikkate alınması gerekir.

EN

*Roof Rack carrying capacity is maximum 75 kg. Please check your vehicle roof maximum carrying capacity from your car manufacturer before load roof rack.

G

*Die Tragfähigkeit des Dachträgers beträgt maximal 75 kg. Vor dem Beladen, bitte überprüfen Sie die maximale Tragfähigkeit Ihres Fahrzeugdachs bei Ihrem Autohersteller.

F

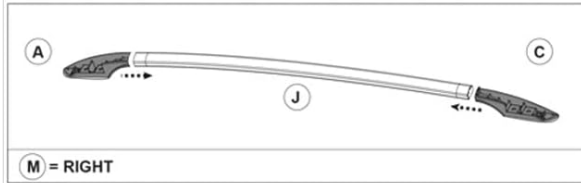
*La capacité de chargement maximale est de 75 Kg. Nous vous prions de vérifier la capacité de chargement du toit de votre véhicule avant de charger les barres de toit.



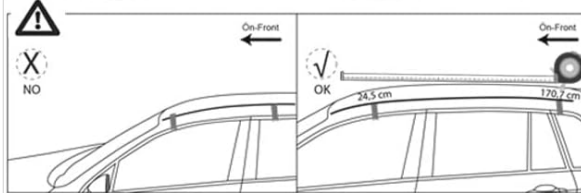
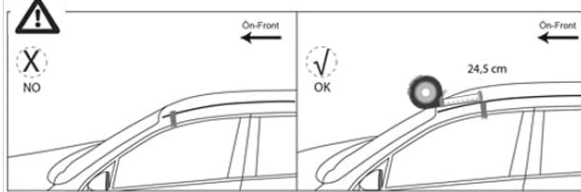
30 Min.



1



(M) = RIGHT



- 1) Ürünün ayakları takarak portbagajı oluşturunuz.
- 2) Aracı önden 24,5 cm ve 170,7 cm olacak şekilde ölçün ve işaretleyiniz. İki bağlantı noktası arası 146,2 cm dir.

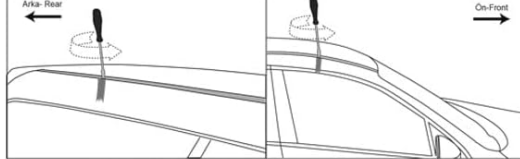
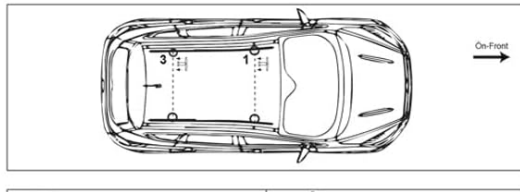
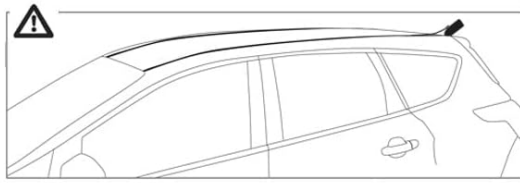
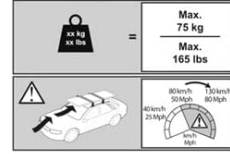
- 1) Attach the feet of the product to form the roof rack.
- 2) Measure and mark the vehicle at 24,5 cm and 170,7 cm from the front to the rear. The distance between the two ports should be 146,2 cm.

- 1) Befestigen Sie die Füße des Produkts um den Dachträger zu bilden
- 2) Messen und markieren in einem Abstand von 24,5 cm und 170,7 cm von vorne nach hinten von Ihrem Fahrzeugdach. Der Abstand zwischen den beiden Anschlüssen sollte 146,2 cm betragen.

PARÇA LİSTESİ Part List / Teilleiste / Lista de accesorios

A	B	C	D
1x Ön Ayak / Front Foot	1x Ön Ayak Kapağı / Front Foot Cover	1x Arka Ayak / Rear Foot	1x Arka Ayak Kapağı / Rear Foot Cover
E	F	G	H
1x Ön Ayak / Front Foot	1x Ön Ayak Kapağı / Front Foot Cover	1x Arka Ayak / Rear Foot	1x Arka Ayak Kapağı / Rear Foot Cover
I	J	K	L
1x Profil / Profile	1x Profil / Profile	4x M6 Paj / M6 Nut	4x M6D

Montaj İçin Gerekli Aletler / Required Tools



- 3) Aracın üstünde bulunan fitili çıkarınız.
- 4) Aracın üzerinde bulunan 1 ve 3 nolu yerdeki civataları çıkarınız.

- 3) Remove the wick from the top of the vehicle.
- 4) Remove the bolts no1 and no3 from the vehicle.

- 3) Entfernen Sie die Dachdichtungen von der Oberseite des Fahrzeugs.
- 4) Entfernen Sie die Schrauben Nr. 1 und Nr. 3 aus dem Fahrzeugdach.

ONAC

Image 2: Detailed Parts List and Tools Required for Installation

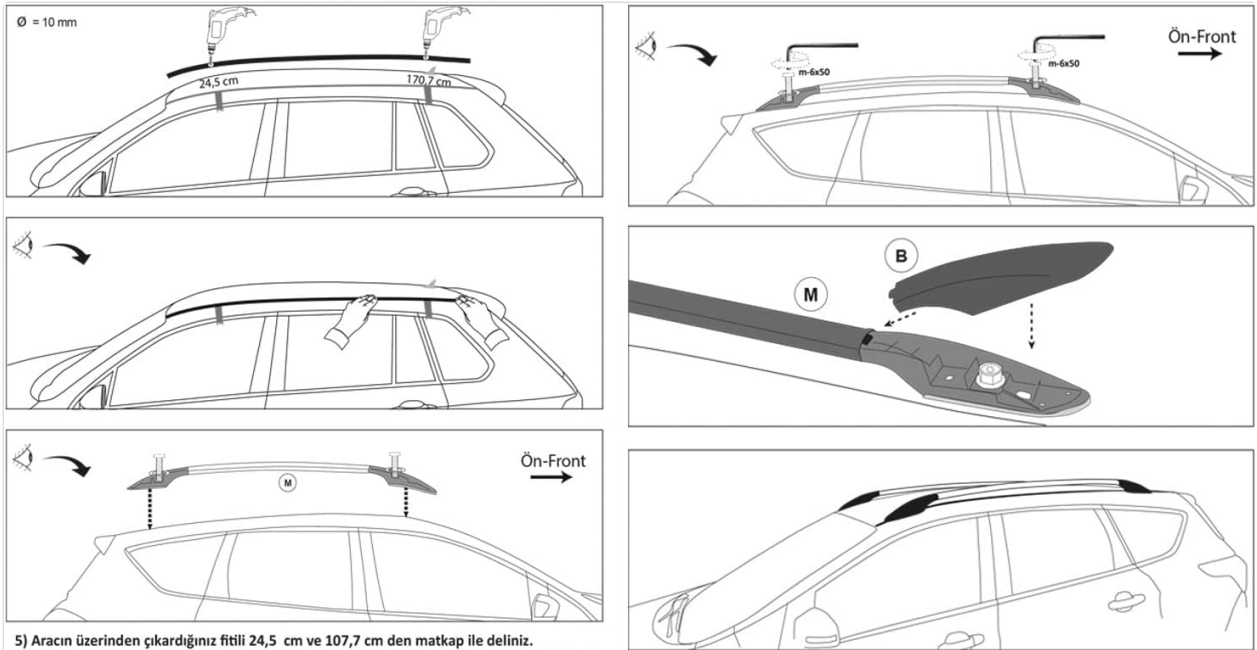
4. INSTALLATION INSTRUCTIONS

Follow these steps carefully for proper installation. Ensure your vehicle is parked on a level surface and the engine is off.

1. **Prepare the Vehicle:** Carefully remove any existing roof trim, wicks, or caps from the vehicle's roof where the rails will be mounted.
2. **Identify Rail Orientation:** Determine the correct orientation for each roof rail. The front end of the rail is typically more aerodynamic or shaped to fit the front of the vehicle. Ensure the 'M' part (end cap cover) is correctly oriented as indicated in the diagram (M = RIGHT).
3. **Mark Drilling Points:**
 - Measure **24.5 cm** from the front edge of the roof towards the rear and mark the first drilling point.
 - From this first mark, measure an additional **170.7 cm** towards the rear and mark the second drilling point.

Note: These measurements are critical for proper fitment. Double-check all measurements before drilling.

- Drill Holes:** Using the provided drill bit (Part L) or an appropriate drill bit for your vehicle's roof material, carefully drill holes at the marked points. Ensure you do not damage any internal wiring or components.
- Install Rubber Seals and Mounting Hardware:** Place the rubber gaskets (Part C) over the drilled holes. Position the mounting brackets (Part D) and mounting plates (Part E) over the gaskets, aligning them with the holes.
- Secure Rails:** Place the roof rack side rails onto the mounting hardware. Insert the M6x30 screws (Part F) through the rails, mounting plates, brackets, and into the vehicle's roof. Secure them from underneath with M6 washers (Part G) and M6 nuts (Part H). Tighten all screws firmly using the provided Allen key (Part K), but do not overtighten.
- Attach End Cap Covers:** Once the roof rails are securely fastened, attach the end cap covers (Part M) to the ends of the rails. These covers provide a finished look and protect the mounting hardware.



5) Aracın üzerinden çıkardığınız fitili 24,5 cm ve 107,7 cm den matkap ile deliniz.

6) Fitili takınız ve portbagajı fitilin üzerine yerleştiriniz. Pul ve vidaları kullanarak sabitleyiniz

5) Remove the vehicle's original wicks from the top. Then drill a hole by marked points: 24,5 cm and 107,7 cm from the front to the rear.

6) Fit the wick and place the roof rack on the wick. Secure them using washers and screws

5) Entfernen Sie die Original-Dachdichtung des Fahrzeug. Dann bohren Sie ein Loch an die markierten Stellen: 24,5 cm und 107,7 cm, von vorne nach hinten.

6) Montieren Sie die Dichtung und platzieren Sie den Dachträger auf die Dichtung und befestigen Sie diese mit Unterlegscheiben und Schrauben.

7) Portbagajı vidaları ile sabitledikten sonra portbagajın kapaklarını takınız ve montaj işlemini tamamlayınız.

7) After fixing the roof rack with screws, install the covers of the roof rack and complete the installation.

7) Nachdem Sie den Dachträger mit Schrauben befestigt haben, bringen Sie die Dachträgerabdeckungen an und schließen Sie die Installation ab.

ONAC

Image 3: Visual Guide for Roof Rack Installation Steps and Measurements



Image 4: OMAC Roof Rack Side Rails installed on a vehicle, side view



Image 5: Close-up of the front section of an installed roof rail

5. OPERATING INSTRUCTIONS

Once installed, your OMAC Roof Rack Side Rails provide a versatile platform for carrying additional cargo. Observe the following guidelines for safe operation:

- **Load Securement:** Always use appropriate tie-downs, straps, or cargo nets to securely fasten all items to the roof rack. Ensure there is no movement of cargo during transit.
- **Weight Limit:** Adhere strictly to the 75 kg (165 lbs) maximum load capacity. Overloading can damage the roof rack, your vehicle, and create a safety hazard.
- **Aerodynamics:** For optimal fuel efficiency and reduced wind noise, remove the roof rack when not in use, or remove any accessories (e.g., cargo boxes, bike carriers) when empty.
- **Crossbar Compatibility:** These side rails are designed to accept compatible crossbars (sold separately) for mounting various roof rack accessories. Ensure any crossbars or accessories used are compatible with the OMAC side rails and your vehicle's load capacity.

6. MAINTENANCE

Regular maintenance will prolong the life and ensure the safe operation of your roof rack side rails.

- **Cleaning:** Clean the roof rack regularly with mild soap and water. Avoid abrasive cleaners or solvents that could damage the finish.
- **Fastener Checks:** Periodically inspect all mounting bolts, nuts, and screws for tightness. Re-tighten as necessary, especially after the first few uses and before long trips.
- **Damage Inspection:** Inspect the rails for any signs of damage, corrosion, or wear. If any damage is found, discontinue use and contact OMAC support for replacement parts or advice.
- **Rubber Components:** Check rubber gaskets and seals for cracks or deterioration. Replace if necessary to maintain water resistance and proper fit.

7. TROUBLESHOOTING

- **Excessive Wind Noise:** If you experience unusual wind noise, ensure all components are securely fastened. Check for any gaps or misalignments. Removing the rack when not in use can also reduce noise.
- **Loose Rails:** If the rails feel loose, immediately check and re-tighten all mounting bolts and nuts. Do not operate the vehicle with loose roof rails.
- **Water Leaks:** If water leaks into the vehicle after installation, verify that the rubber gaskets are correctly seated and undamaged, and that all mounting points are properly sealed.

8. SPECIFICATIONS

Feature	Specification
Brand	OMAC
Model Number	G000259
Manufacturer Part Number	AMZ4625933
Compatible Vehicle	Mazda CX5 (2018-2023)
Material	High-quality Aluminum
Color	Silver
Maximum Load Capacity	75 kg (165 lbs)
Item Weight	8.8 pounds
Product Dimensions (L x W x H)	47 x 3 x 7 inches (approximate, for individual rail)

9. WARRANTY AND SUPPORT

For warranty information, technical support, or to inquire about replacement parts, please contact OMAC USA directly through their official website or the retailer where the product was purchased. Keep your purchase receipt as proof of purchase.

Manufacturer: OMAC USA

