

## Weytoll TGUS10141

# Weytoll TGUS10141 400W Mini Table Saw Instruction Manual

Model: TGUS10141

## 1. INTRODUCTION

---

Thank you for choosing the Weytoll TGUS10141 400W Mini Table Saw. This compact and versatile electric table saw is designed for precision cutting of various materials, including wood, plastic, and acrylic, making it ideal for woodworking, model making, and craft projects. This manual provides essential information for safe operation, setup, maintenance, and troubleshooting to ensure optimal performance and longevity of your tool.



*Image 1.1: Overview of the Weytoll Mini Table Saw highlighting its wide applicability, strong driving force, liftable cutting, grinding function, free speed regulation, and angle cutting capabilities.*

## 2. SAFETY INSTRUCTIONS

Always prioritize safety when operating any power tool. Failure to follow these instructions may result in electric shock, fire, and/or serious injury.

- **Read the entire manual:** Understand all instructions and warnings before operating the saw.
- **Wear appropriate safety gear:** Always wear safety glasses, hearing protection, and a dust mask. Avoid loose clothing or jewelry that could get caught in moving parts.
- **Ensure a safe work environment:** Keep the work area clean, well-lit, and free from clutter. Do not operate in damp or wet conditions.
- **Secure the workpiece:** Always use clamps or other methods to secure the material being cut. Never hold the workpiece with your bare hands near the blade.
- **Keep hands clear of the blade:** Maintain a safe distance from the rotating blade. Use a push stick when cutting small pieces.
- **Unplug before adjustments:** Always disconnect the saw from the power source before changing blades, making adjustments, or performing maintenance.
- **Use correct blades:** Only use blades appropriate for the material being cut and compatible with the

saw's specifications.

- **Avoid forcing the tool:** Allow the saw to cut at its own pace. Forcing it can lead to kickback or damage to the tool.
- **Supervise children:** This tool is not a toy. Keep children and bystanders away from the operating area.
- **Inspect for damage:** Before each use, check the power cord, plug, and saw for any damage. Do not operate if damaged.

### 3. PACKAGE CONTENTS

Carefully unpack all items and ensure all components are present. Refer to the image below for a visual representation of the included parts.



*Image 3.1: The complete package contents of the Weytoll Mini Table Saw, including the main unit, various saw blades, grinding wheels, sanding drums, flexible shaft, drill chucks, power adapter, push stick, safety shield, and wrenches.*

- Weytoll Mini Table Saw Unit
- Power Adapter
- Circular Saw Blades (PCB, High-Speed Steel, Alloy, Resin)

- Flexible Shaft with Chuck
- Drill Bit Clamping Range (1.5-10mm)
- Grinding/Polishing Accessories (various types)
- Sanding Drums/Belts
- Safety Shield
- Push Stick
- Hex Wrenches and other assembly tools
- Instruction Manual (this document)

## 4. SETUP

---

1. **Unpacking:** Remove the table saw and all accessories from the packaging. Inspect for any shipping damage.
2. **Placement:** Place the table saw on a stable, level, and clean workbench. Ensure adequate space around the saw for safe operation and material handling. The anti-slip rubber feet on the bottom of the unit help ensure stability.
3. **Power Connection:** Connect the power adapter to the saw's power input and then plug it into a suitable electrical outlet. Ensure the power switch on the saw is in the "OFF" position before connecting to power.
4. **Blade Installation:**
  - Ensure the saw is unplugged.
  - Carefully remove the blade guard if necessary.
  - Using the provided wrenches, loosen the blade arbor nut.
  - Place the desired circular saw blade onto the arbor, ensuring the teeth are oriented correctly for cutting (pointing towards the front of the saw).
  - Securely tighten the arbor nut. Do not overtighten.
  - Reattach the blade guard.
5. **Safety Shield:** Position the transparent safety baffle over the blade area to prevent debris from splashing during operation.

## 5. OPERATING INSTRUCTIONS

---

### 5.1 Powering On and Speed Regulation

After setup, switch the power button to the "ON" position. The saw features seven speed settings, allowing you to adjust the blade speed according to the material and desired cut. Start with a lower speed for delicate materials and increase as needed for harder materials, always observing the cut quality and motor performance.

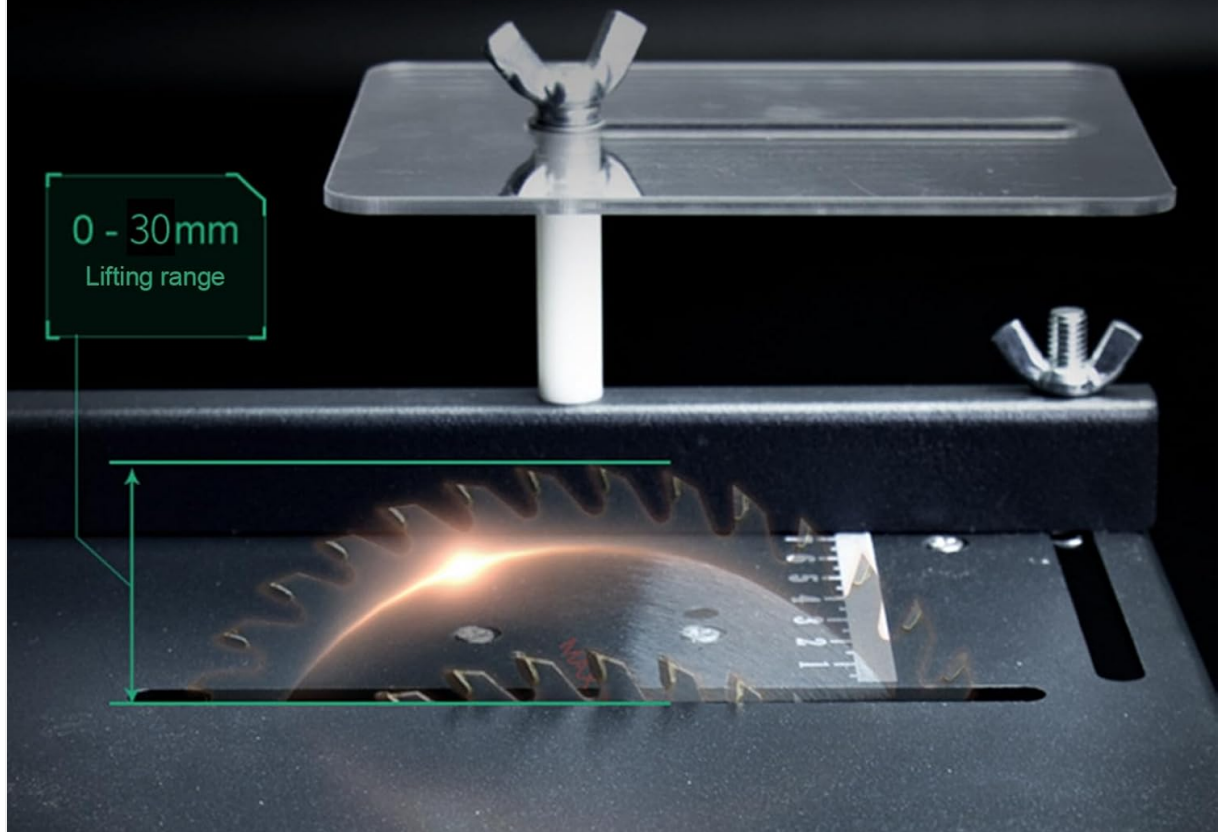
### 5.2 Adjusting Cutting Depth (Lift Cutting)

The cutting depth of the saw blade is adjustable from 0.1mm to 30mm. This feature is particularly useful for grooving tasks or when precise depth control is required.

1. Ensure the saw is unplugged before making adjustments.
2. Locate the hex wrench and the blade height adjustment mechanism.
3. Rotate the adjustment mechanism clockwise to lift the blade and increase the cutting depth.

4. Rotate counter-clockwise to lower the blade and decrease the cutting depth.
5. Verify the desired depth using the integrated scale.

# Lift cutting



*Image 5.2: Close-up view of the lift cutting mechanism, illustrating the 0-30mm lifting range for precise depth adjustment.*

## 5.3 Adjusting Cutting Angle

The saw allows for angle adjustments from 0° to 90°, enabling precise miter cuts. The desktop saw panel has clear markings for accurate angle setting.

1. Ensure the saw is unplugged.
2. Locate the angle adjustment guide and locking mechanism.
3. Loosen the locking mechanism.
4. Adjust the guide to the desired angle using the scale.
5. Securely tighten the locking mechanism.



# Angle cutting

Cut out 0-90 corners at will, efficient operation

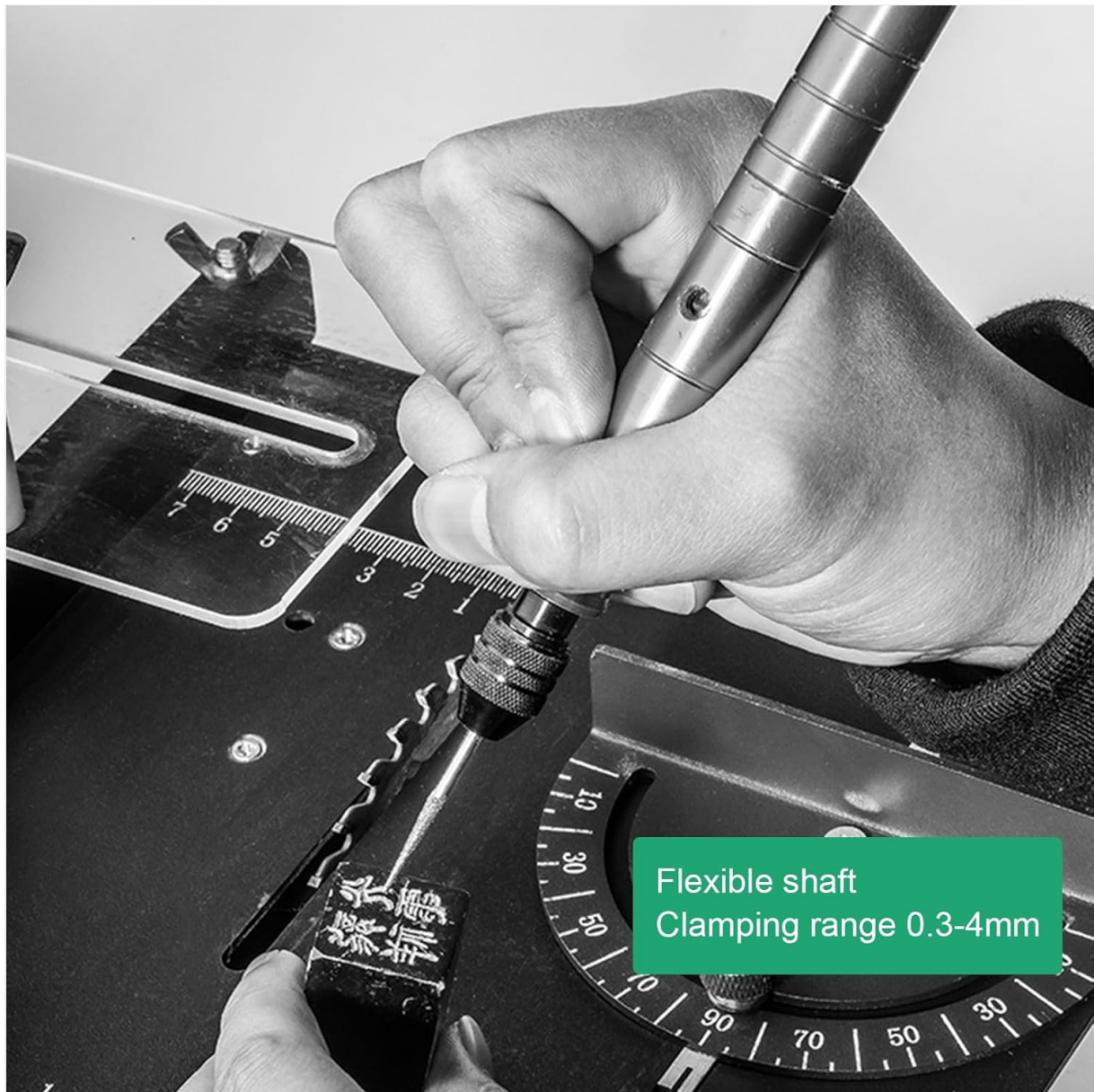


*Image 5.3: View of the angle cutting feature, demonstrating the ability to cut 0-90 degree corners with a push-pull slide design for precise and efficient work.*

## 5.4 Using the Flexible Shaft

The included flexible shaft extends the versatility of your table saw, allowing for detailed carving, drilling, and polishing tasks. The flexible shaft itself has a clamping range of 1.0-3.2mm for various accessories, and it can fix drill bits with a shank diameter of 1.5-10mm when used with the appropriate chuck.

1. Ensure the saw is unplugged.
2. Attach the flexible shaft to the designated port on the side of the table saw unit.
3. Insert the desired accessory (drill bit, carving tool, polishing head) into the flexible shaft's chuck and tighten securely.
4. Power on the saw and use the flexible shaft for detailed work.



*Image 5.4: A hand demonstrating the use of the flexible shaft attachment for carving. The flexible shaft has a clamping range of 1.0-3.2mm for accessories, while the drill bit clamping range is 1.5-10mm.*

## 5.5 Material Compatibility and Applications

The Weytoll Mini Table Saw is suitable for cutting a variety of materials. Different blades are provided for specific applications:

- **PCB Cutting Blades:** For printed circuit boards.
- **High-Speed Steel Saw Blades:** Suitable for softer woods, plastics.
- **Alloy Saw Blades:** For harder woods, aluminum tubes, copper tubes.
- **Resin Saw Blades:** For specific delicate cuts or materials like stone, honey wax.

Common materials that can be processed include wooden sticks, plastic boards, hardwood boards, cans, copper-clad boards, aluminum tubes, and copper tubes. The saw also supports applications like carving seals and polishing with appropriate attachments.

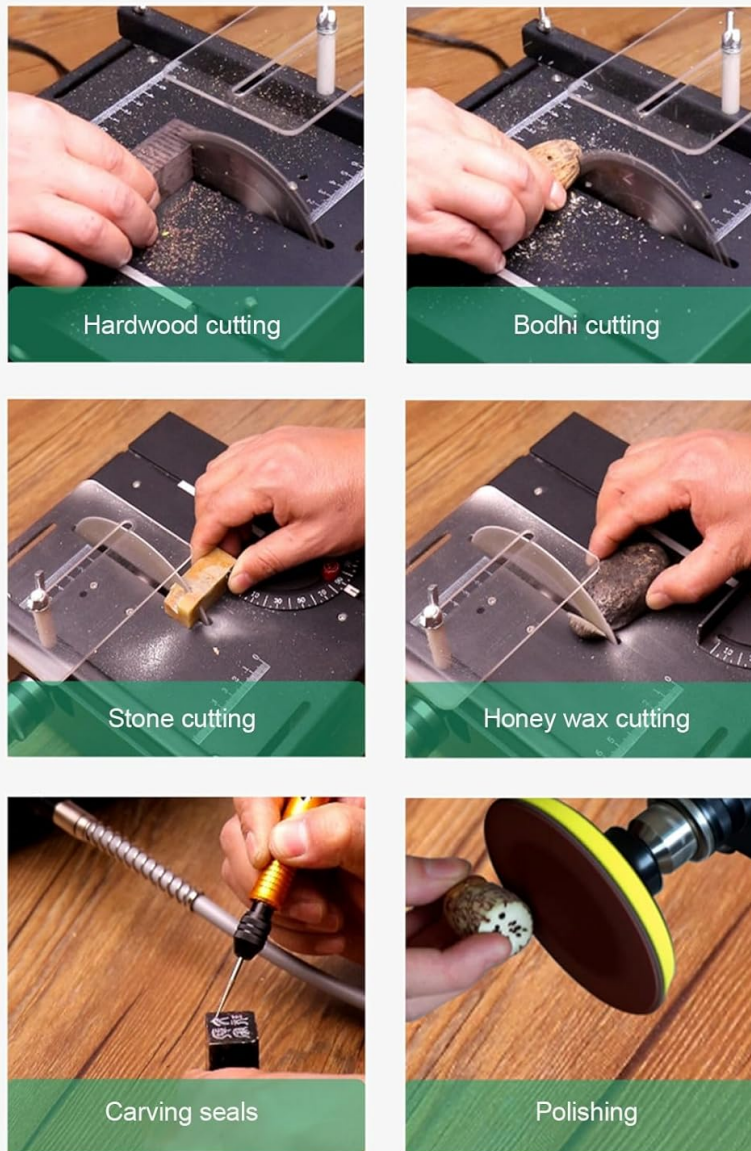


Image 5.5: Collage showing various applications including hardwood cutting, Bodhi cutting, stone cutting, honey wax cutting, carving seals, and polishing, demonstrating the saw's versatility.

## 6. MAINTENANCE

Regular maintenance ensures the longevity and safe operation of your Weytoll Mini Table Saw.

- **Cleaning:** After each use, unplug the saw and use a brush or compressed air to remove sawdust and debris from the motor vents, blade area, and table surface. Do not use water or solvents.
- **Blade Inspection:** Regularly inspect saw blades for sharpness, damage, or missing teeth. Replace dull or damaged blades immediately.
- **Flexible Shaft Care:** Keep the flexible shaft clean and free of kinks. Store it properly to prevent damage.
- **Power Cord:** Check the power cord and plug for any signs of wear or damage. Replace if necessary.
- **Storage:** Store the saw in a dry, clean, and secure location, out of reach of children.

## 7. TROUBLESHOOTING

Problem	Possible Cause	Solution
---------	----------------	----------



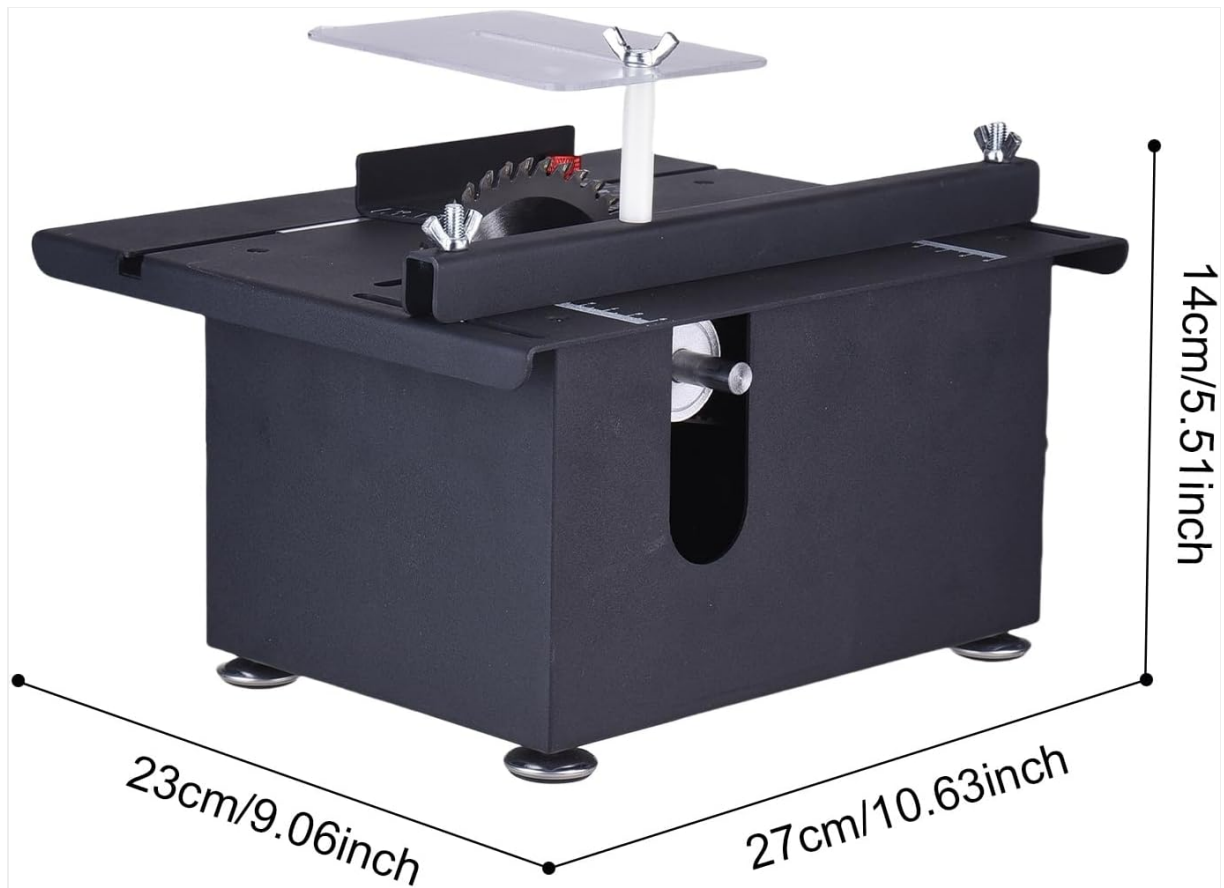
Problem	Possible Cause	Solution
Saw does not start	No power supply; Power switch off; Damaged cord/plug	Check power connection; Ensure switch is ON; Inspect and replace damaged components.
Poor cutting performance	Dull or incorrect blade; Incorrect cutting depth/speed; Material too hard	Replace blade; Use appropriate blade for material; Adjust depth/speed; Do not force the cut.
Excessive vibration/noise	Loose blade; Damaged blade; Unstable workpiece/saw	Tighten blade arbor nut; Replace damaged blade; Secure workpiece and saw.
Motor overheating	Overloading the motor; Blocked ventilation; Continuous heavy use	Reduce load; Clear vents; Allow motor to cool down.

## 8. SPECIFICATIONS

---

The following are the technical specifications for the Weytoll TGUS10141 Mini Table Saw:

- **Model:** TGUS10141
- **Rated Input Power:** 400W
- **Motor Speed:** 8000 rpm/min
- **Output Speed:** 3500 RPM
- **Cutting Depth:** 0-30mm (Adjustable)
- **Angle Adjustment:** 0°~90°
- **Soft Shaft Clamp Range:** 1.0-3.2mm (for accessories)
- **Drill Bit Clamping Range:** 1.5-10mm (for drill bits)
- **Saw Blade Size:** Diameter 110mm, Inner Hole 30mm
- **Dimensions (L x W x H):** 270mm x 230mm x 140mm (10.63 x 9.06 x 5.51 inches)
- **Item Weight:** Approximately 2.9 kg (6.38 pounds)
- **Power Source:** Corded Electric
- **Material:** Metal + Electronic Components



*Image 8.1: Diagram illustrating the physical dimensions of the Weytoll Mini Table Saw: 27cm (10.63 inches) length, 23cm (9.06 inches) width, and 14cm (5.51 inches) height.*

# 400W large power



*Image 8.2: Visual representation of the 400W large power motor, highlighting its robust construction and copper windings, which contribute to the saw's high performance.*

## 9. WARRANTY AND SUPPORT

---

Specific warranty details are not provided in this manual. For warranty information, technical support, or to inquire about replacement parts, please contact Weytoll customer service directly. Refer to the product packaging or the official Weytoll website for contact details.

**Manufacturer:** Weytoll

**Model Number:** TGUS10141

**ASIN:** B0FFSWW6P6