

UREVO SYWP002

UREVO Walking Pad with Incline

INSTRUCTION MANUAL

Important Safety Instructions

Please read this entire manual carefully before operating the UREVO Walking Pad. Retain this manual for future reference. Failure to follow these instructions can result in injury or damage to the product.

- Always place the walking pad on a firm, level surface. Ensure adequate clear space around the treadmill (at least 2 feet on sides and rear).
- Keep children and pets away from the treadmill during operation.
- Wear appropriate exercise clothing and athletic shoes. Do not operate the treadmill barefoot or in loose clothing.
- Do not exceed the maximum user weight of 300 lbs (136 kg).
- If you experience any pain, dizziness, or shortness of breath, stop exercising immediately.
- Always unplug the treadmill from the power outlet when not in use, before cleaning, or before performing any maintenance.
- Do not use the treadmill if it has a damaged cord or plug, or if it is not working properly.
- This product is for indoor use only. Do not expose to water or excessive humidity.

Product Overview

The UREVO Walking Pad with Incline is a versatile 2-in-1 fitness machine designed for both walking and light jogging, suitable for home and office environments. Its compact design and quiet operation make it an ideal solution for integrating physical activity into your daily routine.

Key Features

- **9% Manual Incline:** Allows for simulating hill climbing to increase workout intensity and calorie burn.
- **Powerful & Quiet 2.5HP Motor:** Operates at less than 45 decibels, ensuring a peaceful workout environment.
- **Knee-Friendly Design:** Features a six-point shock absorbing system and a 5-layer anti-slip belt to protect joints.
- **2-In-1 Functionality:** Seamlessly transitions between a walking pad (0.6-3mph) and a jogging machine (0.6-4mph).

- **Ultra-Compact & Lightweight:** Weighs only 35 lbs (16 kg) with built-in wheels for easy portability and storage.

Components

The package includes the following items:

- 1 x UREVO Walking Pad Treadmill
- 1 x Remote Control
- 1 x Instruction Manual
- 1 x Power Cord
- 1 x Hex Tool (for minor adjustments)



Figure 1: UREVO Walking Pad in use, demonstrating both running and walking at a standing desk.

Package Including

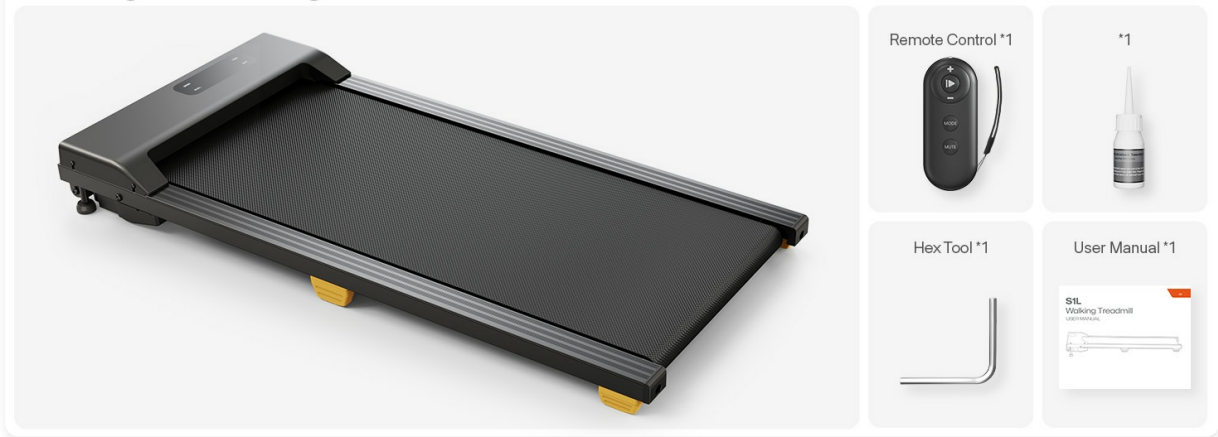


Figure 2: Contents included in the UREVO Walking Pad package.

Setup Guide

Unpacking

Carefully remove all components from the packaging. Inspect the treadmill and all accessories for any signs of damage. If any damage is found, do not assemble or operate the unit and contact customer support immediately.

Placement

Choose a flat, stable, and non-slip surface for the treadmill. Ensure there is at least 2 feet of clear space behind and on both sides of the treadmill for safety and ease of use. Avoid placing the treadmill near water sources or in areas with high humidity.

Initial Setup

1. Place the walking pad in your desired location.
2. Ensure the power switch on the treadmill is in the OFF position.
3. Connect the power cord to the treadmill's power input, then plug the other end into a grounded electrical outlet.
4. The UREVO Walking Pad is designed for minimal assembly. Simply unbox, place, and plug in.

LED Display & Remote Control



Figure 3: The UREVO Walking Pad's lightweight and compact design allows for easy movement and storage.

Operating Instructions

Power On/Off

- To power on, flip the main power switch located on the front of the treadmill to the ON position. The LED display will illuminate.
- To power off, flip the main power switch to the OFF position.

Using the Remote Control

The remote control allows you to easily manage your workout settings.

- **Start/Stop Button:** Press to start or stop the treadmill belt.

- **Speed +/- Buttons:** Adjust the speed of the treadmill.
- **Mode Button:** Cycle through different display modes (Time, Distance, Calories, Speed).

Adjusting Speed and Modes

The UREVO Walking Pad supports two main modes:

- **Walking Mode:** Speed range from 0.6 mph to 3 mph. Ideal for light activity or walking while working.
- **Running Mode:** Speed range from 0.6 mph to 4 mph. Suitable for light jogging.

Use the speed +/- buttons on the remote to increase or decrease the belt speed to your desired level.

Adjusting Incline

The UREVO Walking Pad features a manual incline adjustment up to 9% (2.7° lift angle). To adjust the incline:

1. Ensure the treadmill is powered off and unplugged.
2. Carefully lift the rear of the treadmill to access the incline adjustment points.
3. Adjust the support legs or mechanism to the desired incline level. Refer to the specific instructions in your included user manual for detailed steps on manual incline adjustment.
4. Ensure the treadmill is stable and locked into place before resuming operation.

LED Display

The integrated LED display provides real-time feedback on your workout:

- **Time:** Duration of your workout.
- **Distance:** Total distance covered.
- **Calorie:** Estimated calories burned.
- **Speed:** Current speed of the treadmill belt.

2.5HP High-Quality & Quiet Motor

100,000 times high-speed impact test, 4 hours motor operation test



<45lb



300 LBS
Weight Capacity



Figure 4: The UREVO Walking Pad supports both jogging and walking modes.

Walking Pad Treadmill for Home Office

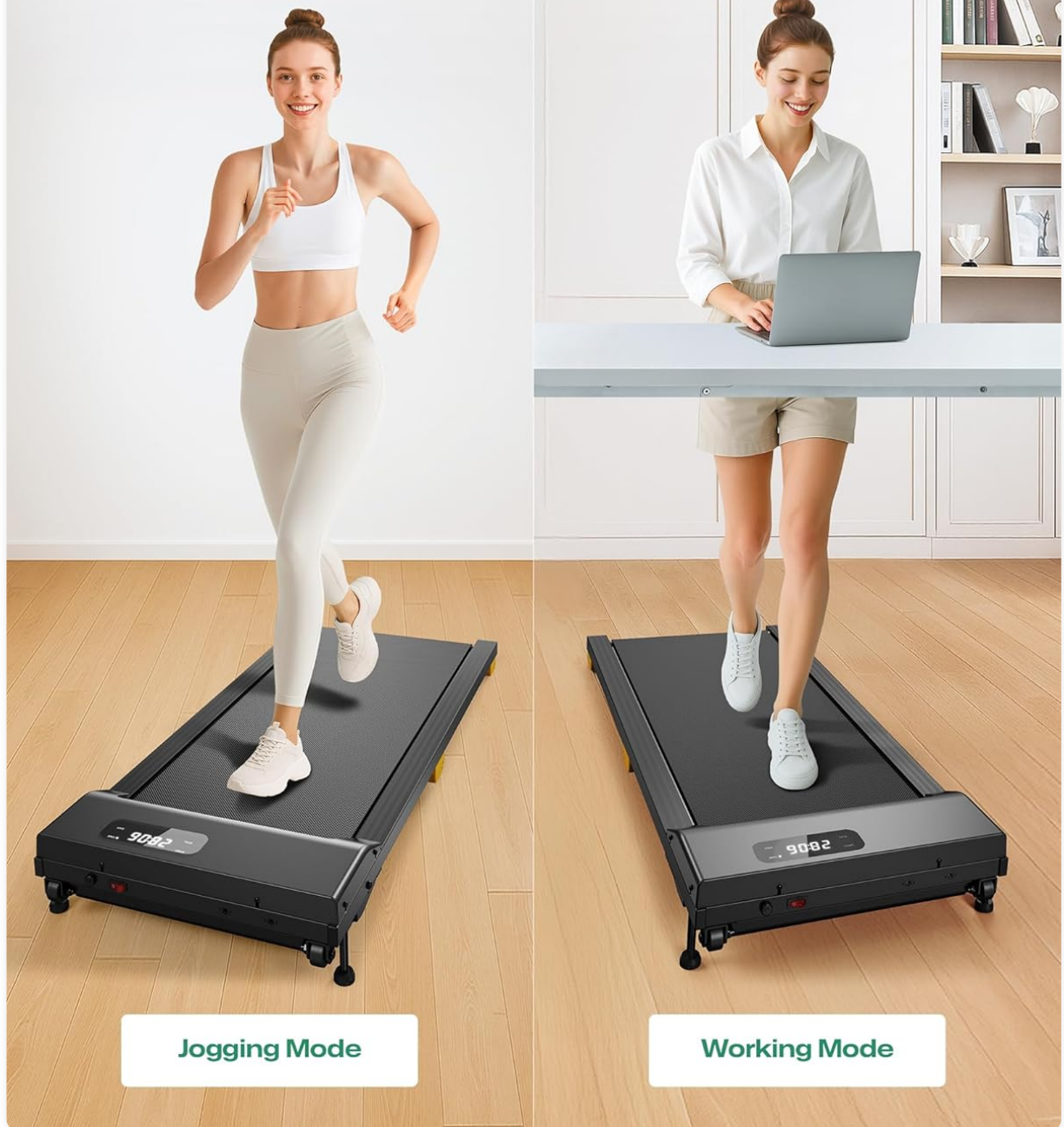


Figure 5: Visual representation of the 9% manual incline feature.

Women-Friendly Design , Easy To Store & Move



Figure 6: The LED display and remote control for easy operation.

Maintenance

Regular maintenance ensures the longevity and optimal performance of your UREVO Walking Pad.

Cleaning

- Always unplug the treadmill before cleaning.
- Wipe down the surface of the treadmill, including the belt and frame, with a damp cloth after each use to remove sweat and dust.
- Do not use abrasive cleaners or solvents, as they may damage the finish.

Belt Lubrication

The walking belt requires periodic lubrication to reduce friction and extend its lifespan. Refer to your

specific user manual for the recommended lubrication schedule and procedure. Typically, silicone oil is applied under the belt.

Belt Adjustment

If the walking belt starts to slip or drift to one side, it may need adjustment. Consult your user manual for detailed instructions on how to tension and center the belt using the provided hex tool.

Troubleshooting

If you encounter any issues with your UREVO Walking Pad, refer to the common problems and solutions below. If the problem persists, contact customer support.

Problem	Possible Cause	Solution
Treadmill does not power on.	Power cord not plugged in; Power switch off; Circuit breaker tripped.	Ensure power cord is securely plugged in; Turn power switch ON; Check household circuit breaker.
Belt slips or hesitates.	Belt too loose; Lack of lubrication.	Adjust belt tension (refer to manual); Lubricate belt.
Unusual noise during operation.	Loose parts; Belt friction; Motor issue.	Check for loose screws and tighten; Lubricate belt; If noise persists, contact support.
Remote control not responding.	Dead battery; Remote not paired.	Replace remote battery; Refer to manual for remote pairing instructions.

Product Specifications

Specification	Value
Model Name	SYWP002
Peak Power	2.5 HP
Incline	Manual, up to 9%
Noise Level	<45 dB
Walking Mode Speed	0.6 - 3 mph
Running Mode Speed	0.6 - 4 mph
Runway Size	15" x 35.4"
Max User Weight	300 lbs (136 kg)
Product Weight	35.3 lbs (16 kg)
Product Dimensions (LxWxH)	42.5"D x 20"W x 4.5"H
Material	Alloy Steel
Display Type	LED

Specification	Value
Power Source	Corded Electric

Warranty and Support

Warranty Information

The UREVO Walking Pad with Incline comes with a **1-year warranty** from the date of purchase. This warranty covers manufacturing defects and workmanship under normal use. Please retain your proof of purchase for warranty claims. The warranty does not cover damage caused by misuse, accident, unauthorized modification, or failure to follow the instructions in this manual.






Customer Support

For any questions, technical assistance, or warranty claims, please contact UREVO customer support. Refer to the contact information provided on the product packaging or the official UREVO website.

When contacting support, please be prepared to provide your product model number (SYWP002) and proof of purchase.

© 2025 UREVO. All rights reserved.

Related Documents - SYWP002

	<p>UREVO CyberPad for Office Auto Incline Smart Walking Pad Treadmill User Manual</p> <p>This comprehensive user manual for the UREVO CyberPad for Office Auto Incline Smart Walking Pad Treadmill (Model URTM051) guides users through setup, operation, safety protocols, maintenance, and troubleshooting. Discover features like the auto incline system and UREVO SmartCoach App integration for a smarter fitness experience.</p>
	<p>UREVO SpaceWalk 5L Auto Incline Smart Walking Pad Treadmill User Guide</p> <p>Comprehensive user guide for the UREVO SpaceWalk 5L Auto Incline Smart Walking Pad Treadmill. Includes safety instructions, UREVO app integration, remote control operation, and LED display information for optimal use.</p>
	<p>UREVO SPACEWALK 2 Auto Incline Walking Treadmill User Manual</p> <p>Comprehensive user manual for the UREVO SPACEWALK 2 Auto Incline Walking Treadmill (Model URTM020), covering safety instructions, specifications, operation, maintenance, and warranty information.</p>
	<p>UREVO SpaceWalk 5L Auto Incline Smart Walking Pad Treadmill User Guide</p> <p>User guide for the UREVO SpaceWalk 5L Auto Incline Smart Walking Pad Treadmill (Model URTM054), covering safety instructions, app connection, remote control operation, and specifications. Features 24-month warranty and lifetime customer service.</p>
	<p>UREVO CyberPad for Office Treadmill User Manual & SmartCoach App Guide</p> <p>Comprehensive user manual for the UREVO CyberPad for Office treadmill, including setup, safety instructions, SmartCoach app integration, and remote control operation. Model URTM051.</p>



[Spacewalk E1 Walking Treadmill User Manual](#)

User manual for the UREVO Spacewalk E1 Walking Treadmill (Model URTM025), providing instructions for setup, operation, maintenance, safety, and warranty.