

GoveeLife H5140

GoveeLife Smart Air Quality Monitor (Model H5140) User Manual

INTRODUCTION

The GoveeLife Smart Air Quality Monitor (Model H5140) is designed to provide real-time monitoring of indoor air quality. It accurately measures Carbon Dioxide (CO₂) levels, temperature, and humidity, offering valuable insights into your environment. This device helps you maintain a healthy and comfortable living or working space by alerting you to changes in air quality.

WHAT'S IN THE BOX

Carefully unpack the contents and ensure all items are present:

- Smart CO₂ Monitor x 1
- Power Cord (2m/6.5ft) x 1
- Power Adapter x 1
- User Manual x 1

What's in the Box

- 1 Smart CO₂ Monitor x 1
- 2 Power Cord, 2m(6.5ft) x 1
- 3 Power Adapter x 1
- 4 User Manual x 1



Image: Contents of the GoveeLife Smart Air Quality Monitor package.

SETUP

- Power Connection:** Connect the provided Type-C cable to the monitor and plug the power adapter into a standard wall outlet. The device will power on automatically.
- App Download:** Download the Govee Home app from your smartphone's app store (available for iOS and Android).
- Device Pairing:** Open the Govee Home app, create an account or log in, and follow the on-screen instructions to add your Smart Air Quality Monitor. Ensure your Wi-Fi network is 2.4GHz, as the device only supports this frequency.

4. **Placement:** Place the monitor in a central location within the room you wish to monitor, away from direct airflow, windows, or heat sources for accurate readings.

OPERATING INSTRUCTIONS

Real-Time Display

The monitor features a clear LED digital tube display that shows four essential metrics simultaneously:

- **CO2 Value:** Displays the current Carbon Dioxide concentration in Parts Per Million (PPM).
- **Temperature:** Shows the ambient temperature in degrees Fahrenheit (°F) or Celsius (°C).
- **Humidity:** Indicates the relative humidity (%RH).
- **Real-Time Clock:** Displays the current time (requires connection to the Govee Home app for synchronization).

Multi-Purpose, Four Effects in One



Image: Multi-purpose display showing CO2, temperature, humidity, and time.

Understanding CO2 Levels

The monitor provides an intuitive display of CO2 levels, often accompanied by a color-coded light bar for quick assessment:

- **Good (Green):** 400-1000 PPM. Indicates healthy air quality.
- **Moderate (Yellow):** 1000-1400 PPM. Suggests ventilation may be beneficial.
- **Poor (Red):** >1400 PPM. Indicates high CO2 levels, requiring immediate ventilation.

Intuitive CO₂ Level Display

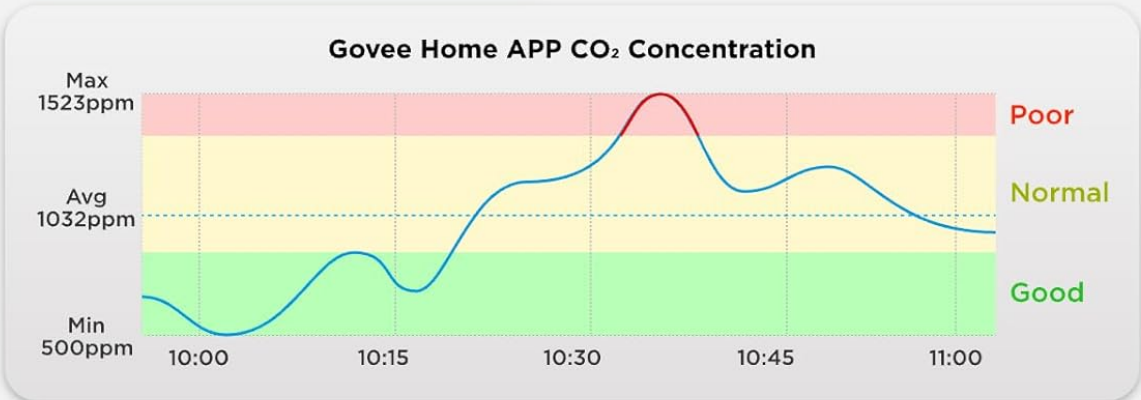
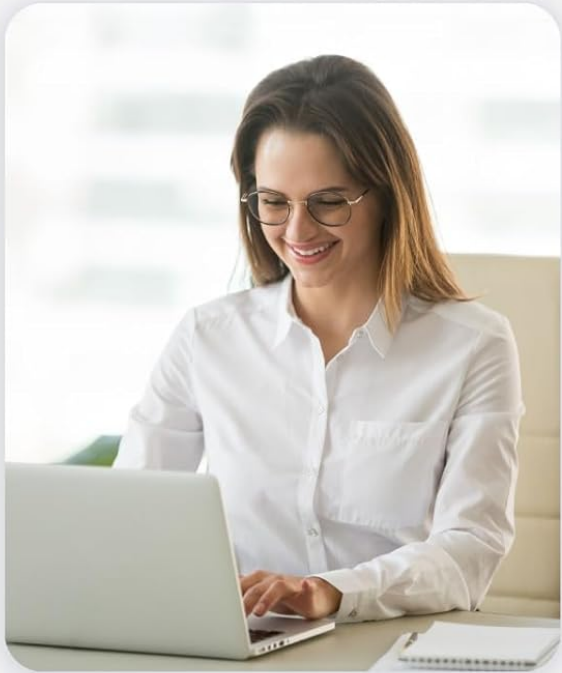


Image: Intuitive CO₂ level display with good, moderate, and poor ranges.

3-Color Indicator Bar


	400-1000 PPM	Good
	1000-1400 PPM	Moderate
	>1400+ PPM	Poor



Image: 3-Color Indicator Bar for CO2 levels.

Triple Alert System

The monitor provides comprehensive alerts when CO2 levels, temperature, or humidity exceed user-defined thresholds:

- **Buzzer Alert:** The device emits an audible alarm, and the screen flashes.
- **App Notifications:** Instant alerts are sent to your smartphone via the Govee Home app.
- **Email Reports:** Detailed reports can be sent to your email address.

3 Types of Alarms for Different Use Scenarios



Image: Three types of alarms for different scenarios.

Customizable LED Display

Adjust the display settings to suit your preferences and environment:

- **Programmable Screen:** Customize what information is displayed on the screen via the Govee Home app.
- **Brightness Adjustment:** Set custom day/night schedules for automatic brightness adjustment, ensuring clear visibility during the day and preventing light disturbance at night.

LED Digital Tube Display for Clear Readings



Image: LED digital tube display with customizable settings.

Data Tracking & Export

Monitor historical air quality data and export reports for analysis:

- **Historical Data:** Track up to 20 days of data within the Govee Home app and access up to two years of cloud historical data.
- **CSV Export:** Export professional CSV reports for detailed analysis, useful for health consultations or optimizing energy efficiency.

Historical Data Readings Available

20 Days
APP Data Records

2 Years
Cloud Historical Data



Image: Historical data readings available in app and for export.

Smart Home Integration

Integrate your monitor with smart home ecosystems for enhanced control:

- **Voice Control:** Query CO2 concentration using voice commands through Amazon Alexa or Google Assistant.
- **Ecological Linkage:** Connect with compatible smart humidifiers and tower fans to enable automatic adjustments based on air quality readings, transforming passive monitoring into active environmental management.

SPECIFICATIONS

Key technical specifications for the GoveeLife Smart Air Quality Monitor:

Feature	Specification
Model Number	H5140
CO2 Reading Accuracy	$\pm(40\text{ppm} + 5\%)$
CO2 Refresh Rate	5 seconds
Temperature Accuracy	$\pm 0.54^{\circ}\text{F}$
Humidity Accuracy	$\pm 3\%$
Display Size	4.82 Inches
Connectivity	2.4GHz Wi-Fi
Material	PC+ABS
Color	Black
Product Dimensions	14.2 x 6.81 x 7.59 cm
Item Weight	150 g
Compatible Devices	Humidifier, Tower fan (via smart home integration)

Accurate and High Speed

± 40 PPM
+5%
CO₂ reading accuracy

5_s
CO₂ Refresh Rate

± 0.54 °F
Temp Accuracy

± 3 %
Humidity Accuracy

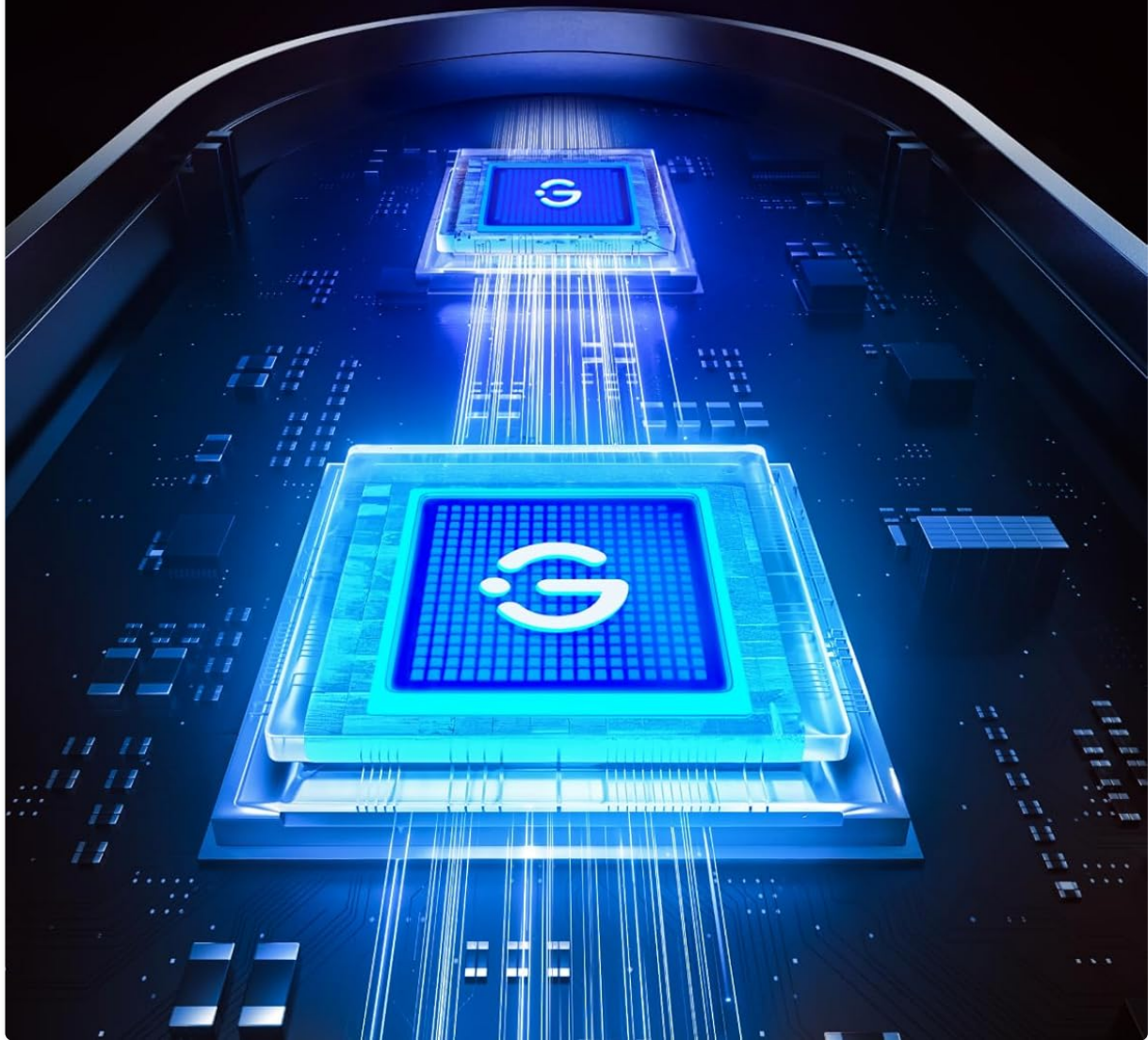


Image: Accuracy and high-speed performance specifications.

MAINTENANCE

To ensure optimal performance and longevity of your GoveeLife Smart Air Quality Monitor, follow these maintenance guidelines:

- **Cleaning:** Gently wipe the device with a soft, dry cloth. Do not use liquid cleaners or abrasive materials, as they may damage the sensors or display.
- **Placement:** Avoid placing the monitor in areas with extreme temperatures, high humidity, or direct sunlight. Keep it away from sources of strong vibrations or electromagnetic interference.
- **Ventilation:** Ensure the sensor vents are not obstructed to allow for accurate air sampling.

TROUBLESHOOTING

If you encounter issues with your GoveeLife Smart Air Quality Monitor, refer to the following common solutions:

- **Device Not Powering On:** Ensure the power cable is securely connected to both the monitor and a working power outlet. Try a different outlet or power adapter if available.
- **Inaccurate Readings:** Verify the monitor is placed in an appropriate location, away from direct airflow, vents, or heat sources. Allow the device to stabilize for at least 10-15 minutes after initial power-on or relocation.
- **App Connection Issues:** Ensure your smartphone's Bluetooth is enabled and the monitor is within range. Confirm your Wi-Fi network is 2.4GHz. Restart both the monitor and your smartphone, then try pairing again through the Govee Home app.
- **No Alerts:** Check the alert settings within the Govee Home app to ensure thresholds are correctly set and notifications are enabled.
- **Display Not Working:** If the display is blank or unresponsive, try restarting the device by unplugging and re-plugging the power cable. If the issue persists, contact customer support.

WARRANTY AND SUPPORT

GoveeLife products are designed for reliability and performance. For warranty information, technical support, or any questions not covered in this manual, please visit the official GoveeLife website or contact their customer support team. Keep your purchase receipt for warranty claims.

GoveeLife Official Website: www.govee.com